

The pinocytosis of COS by macrophages was observed by fluorescence microscope. The results showed that FITC-COS could be phagocytosed by macrophages. With the prolonged period, the fluorescence intensity enhanced. The results were shown in **Figure S1**.

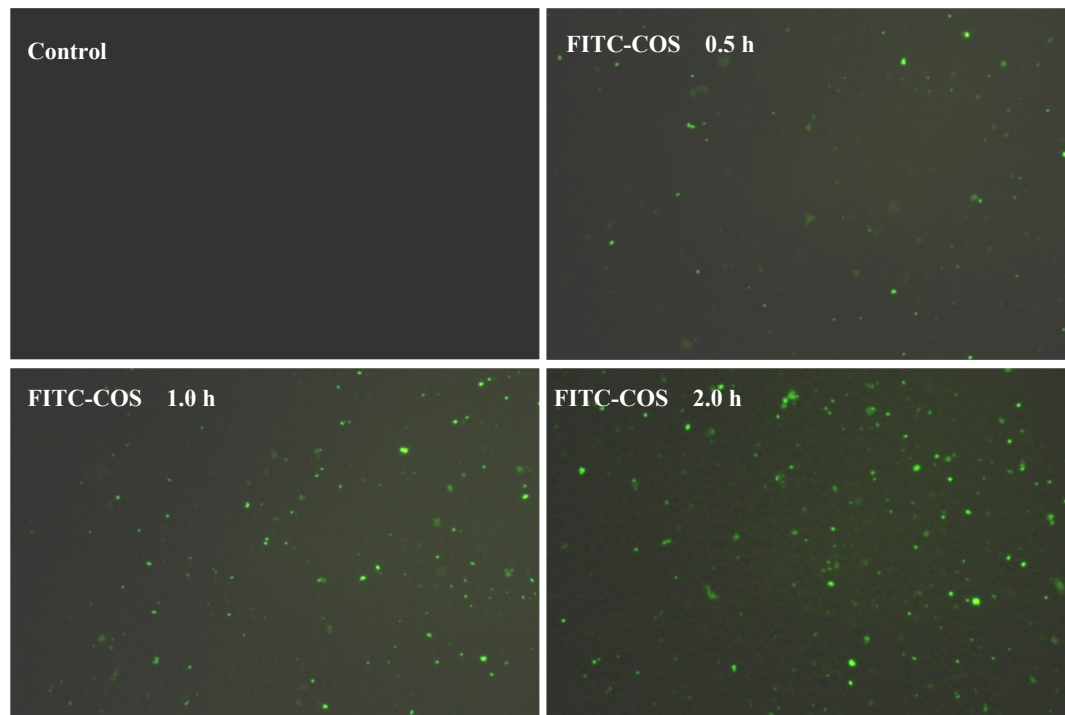


Figure S1. FITC-COS pinocytosis by macrophages. FITC-COS (0.5 mg/ml) in PBS was added to macrophages for different time of co-incubation. After co-incubation at different time intervals, cells were washed with PBS for three times and were observed with Nikon fluorescence microscope.

The original tumor size photos were shown in **Figure S2**.

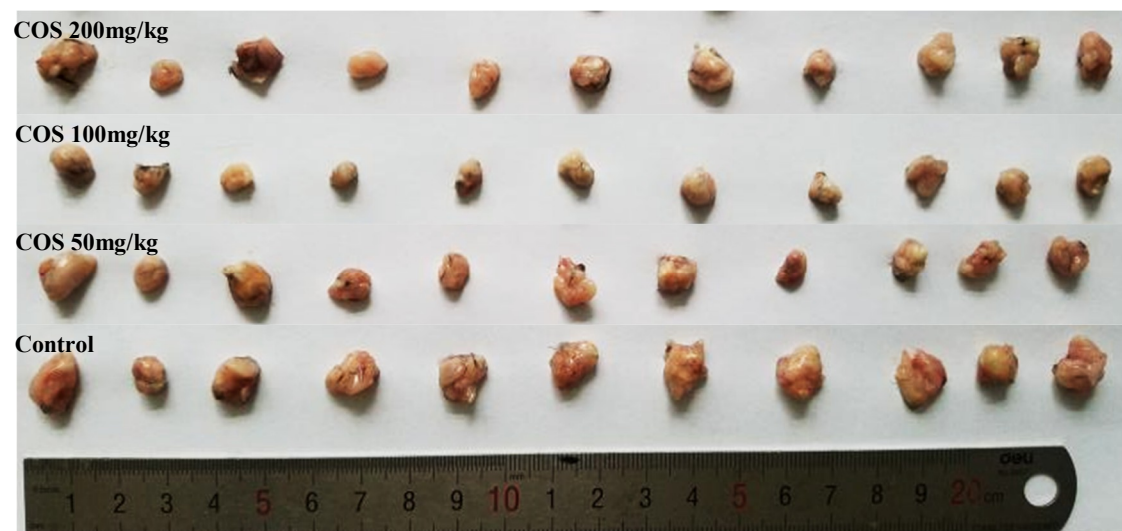


Figure S2. The photos of original tumor size.