

*Ptychoptera* sp.

*Bittacomorphella fenderiana*

*Culicoides arakawae*

*Thaumalea* sp.

*Simulium aureohirtum*

*Simulium variegatum*

*Simulium quinquestriatum*

*Dixella aestivalis*

*Dixella* sp.

*Parochlus steinenii*

*Chironomus tepperi*

*Polypedilum vanderplanki*

*Chaoborus* sp.

*Corethrella condita*

*Anopheles quadrimaculatus*

*Anopheles darlingi*

*Culex quinquefasciatus*

*Culex tritaeniorhynchus*

*Aedes aegypti*

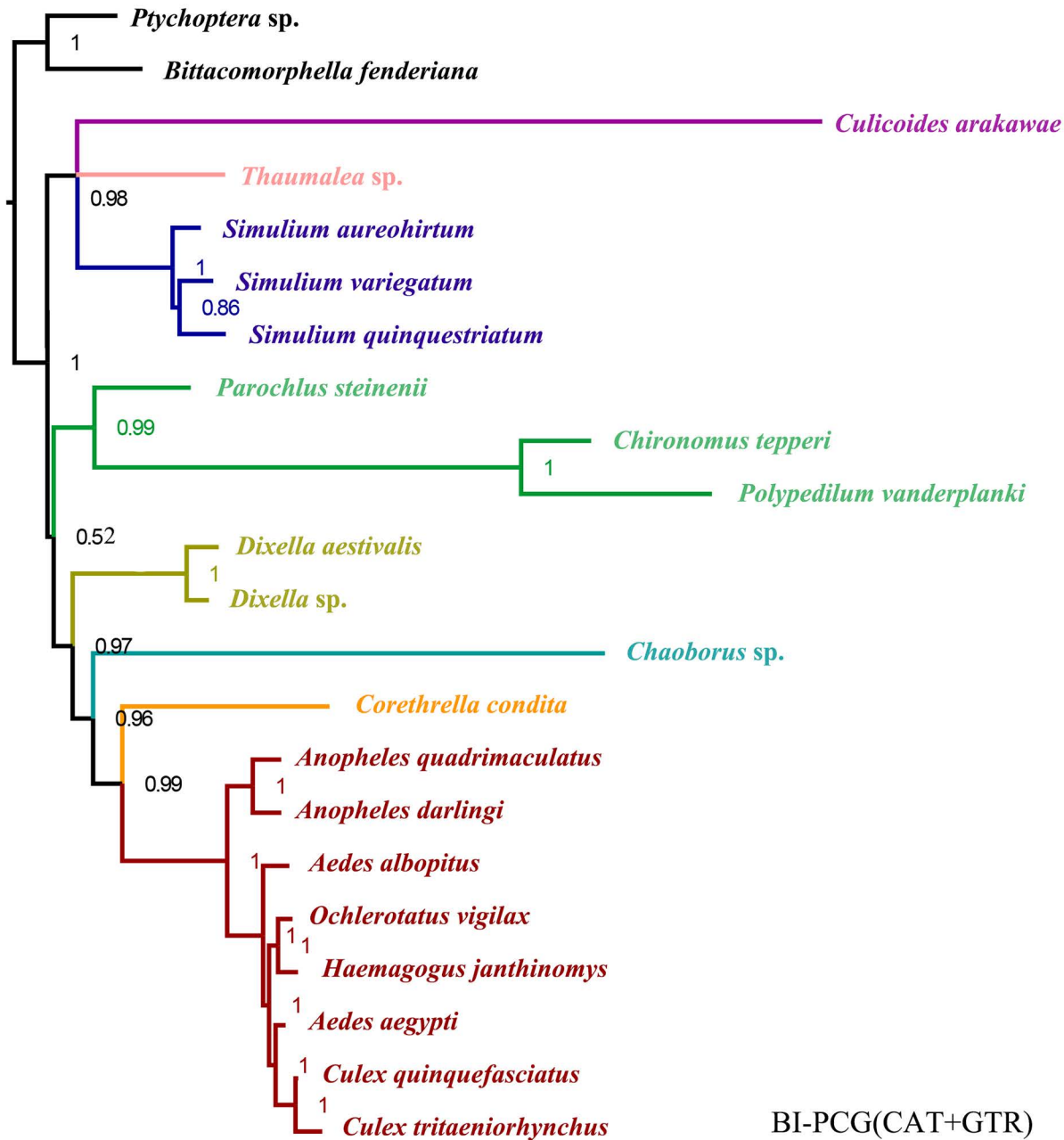
*Aedes albopitus*

*Ochlerotatus vigilax*

*Haemagogus janthinomys*

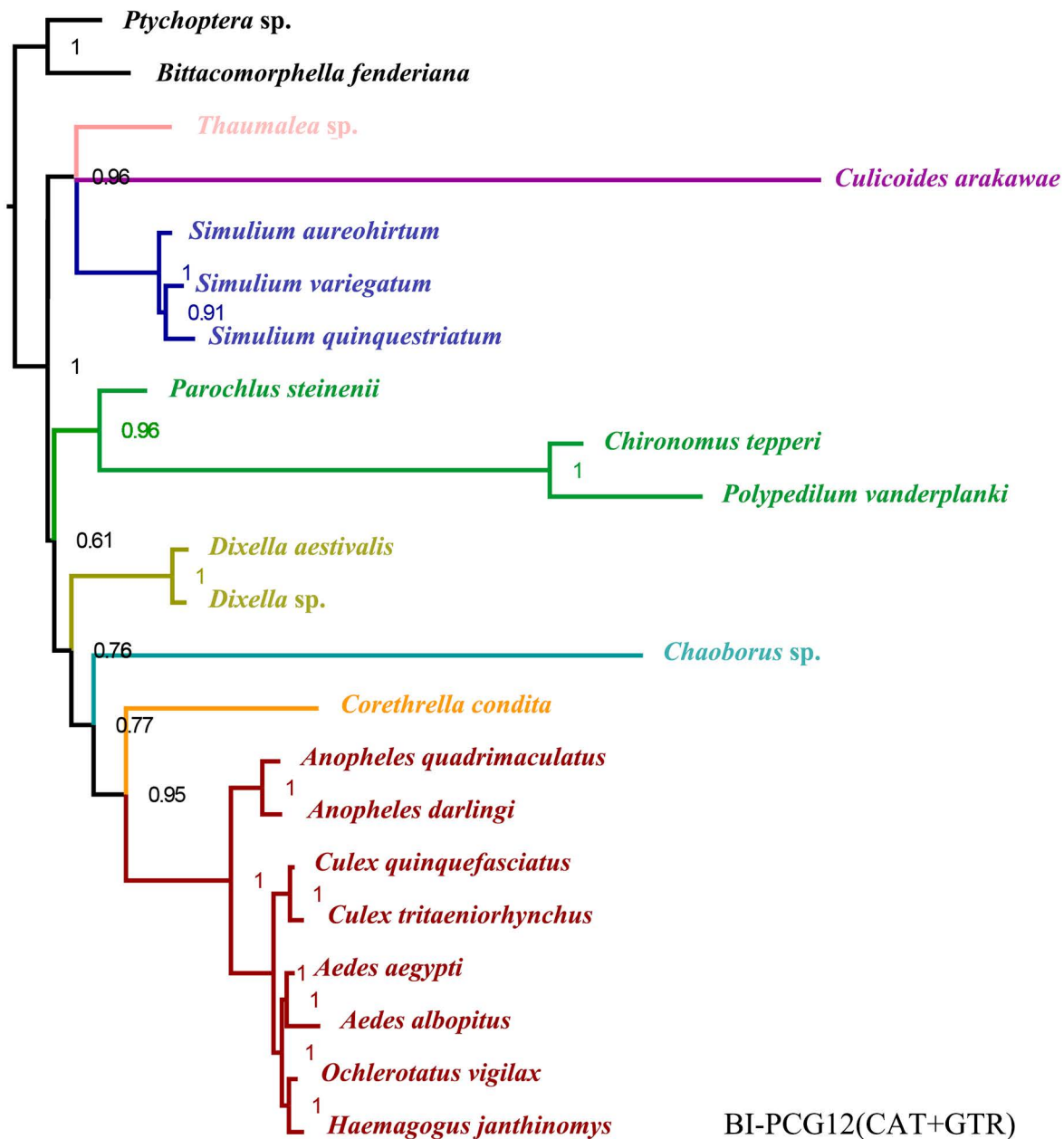
BI-PCG12RNA(CAT+GTR)

0.2

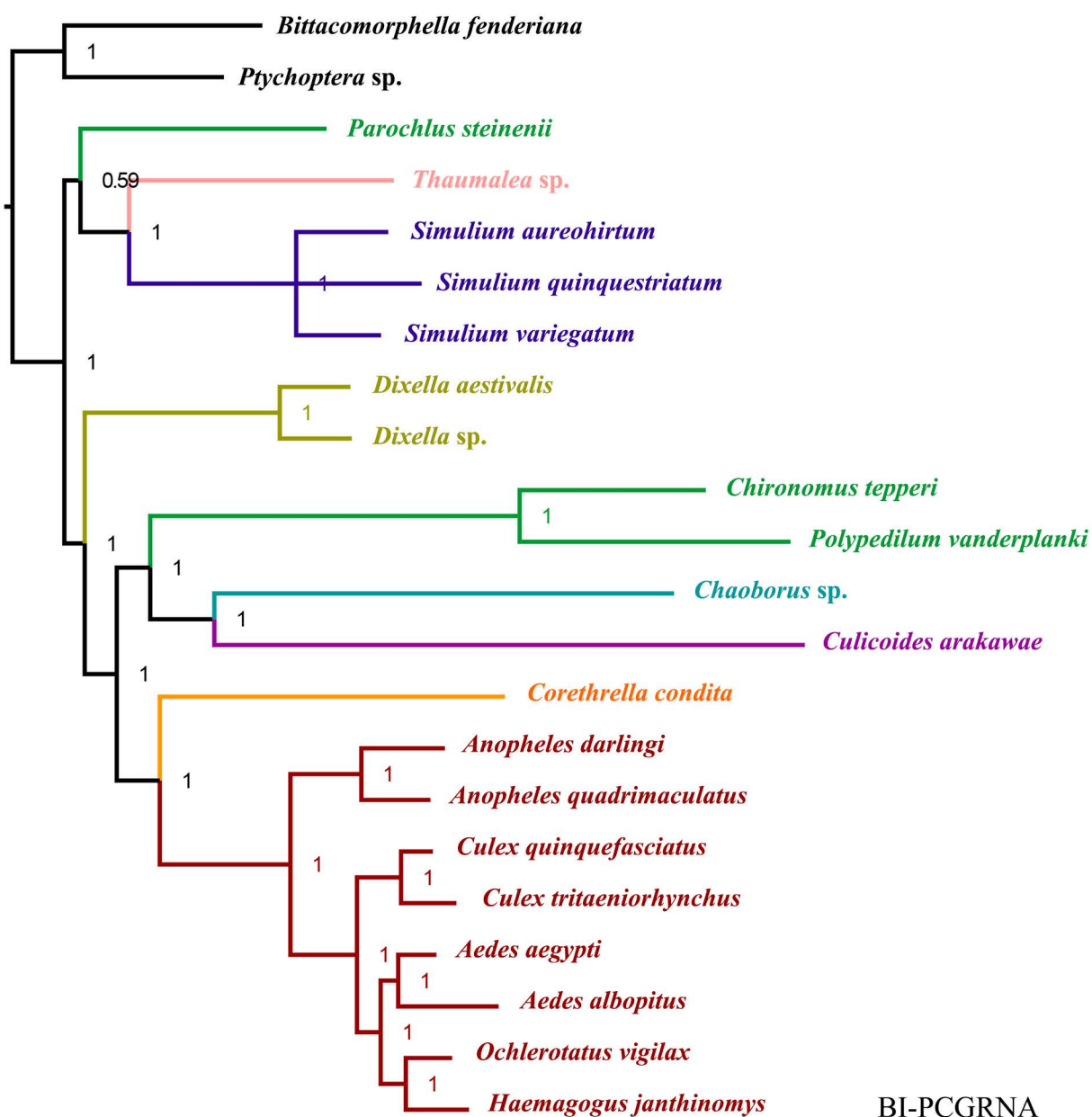


BI-PCG(CAT+GTR)

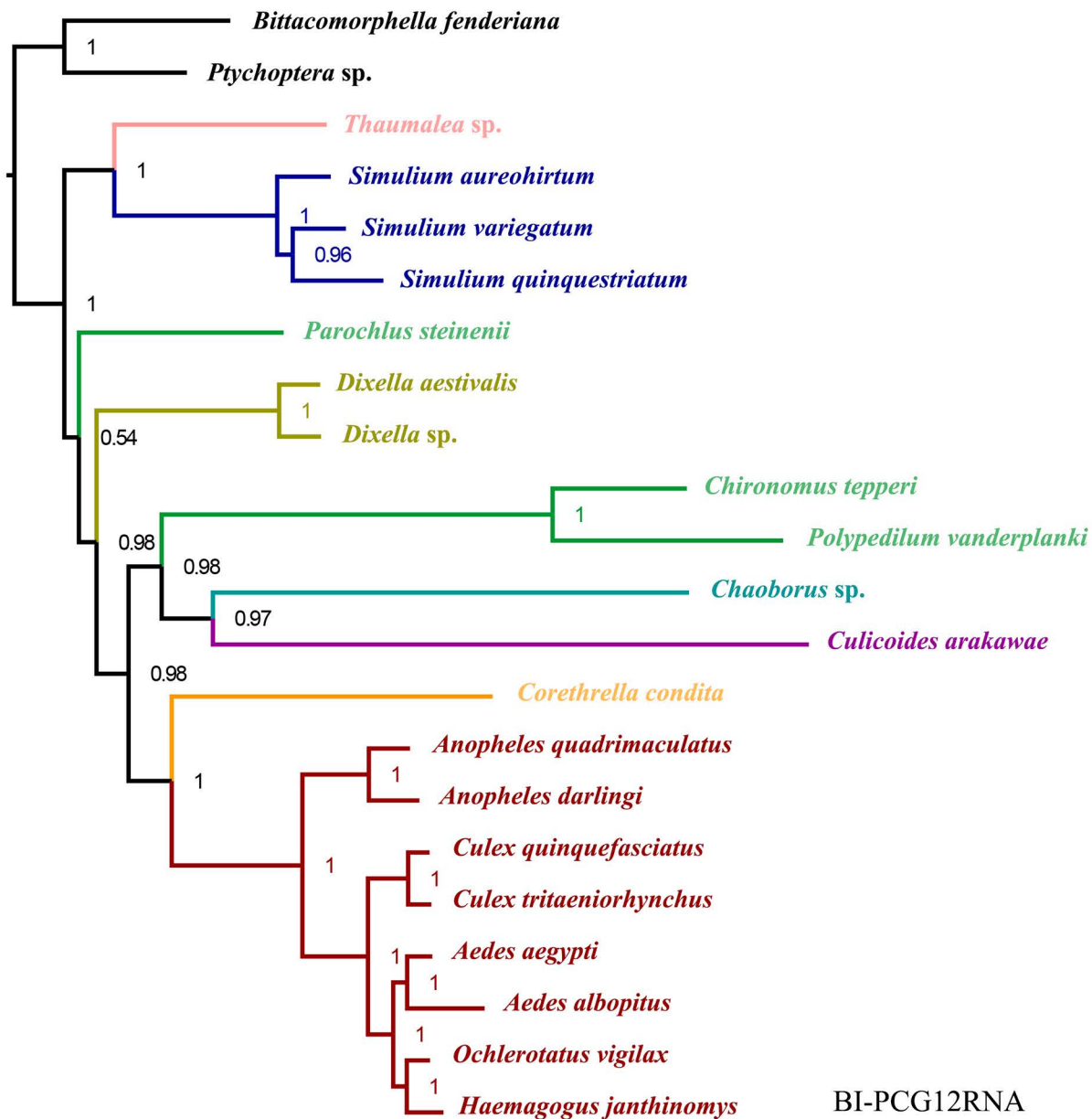
0.5



0.2

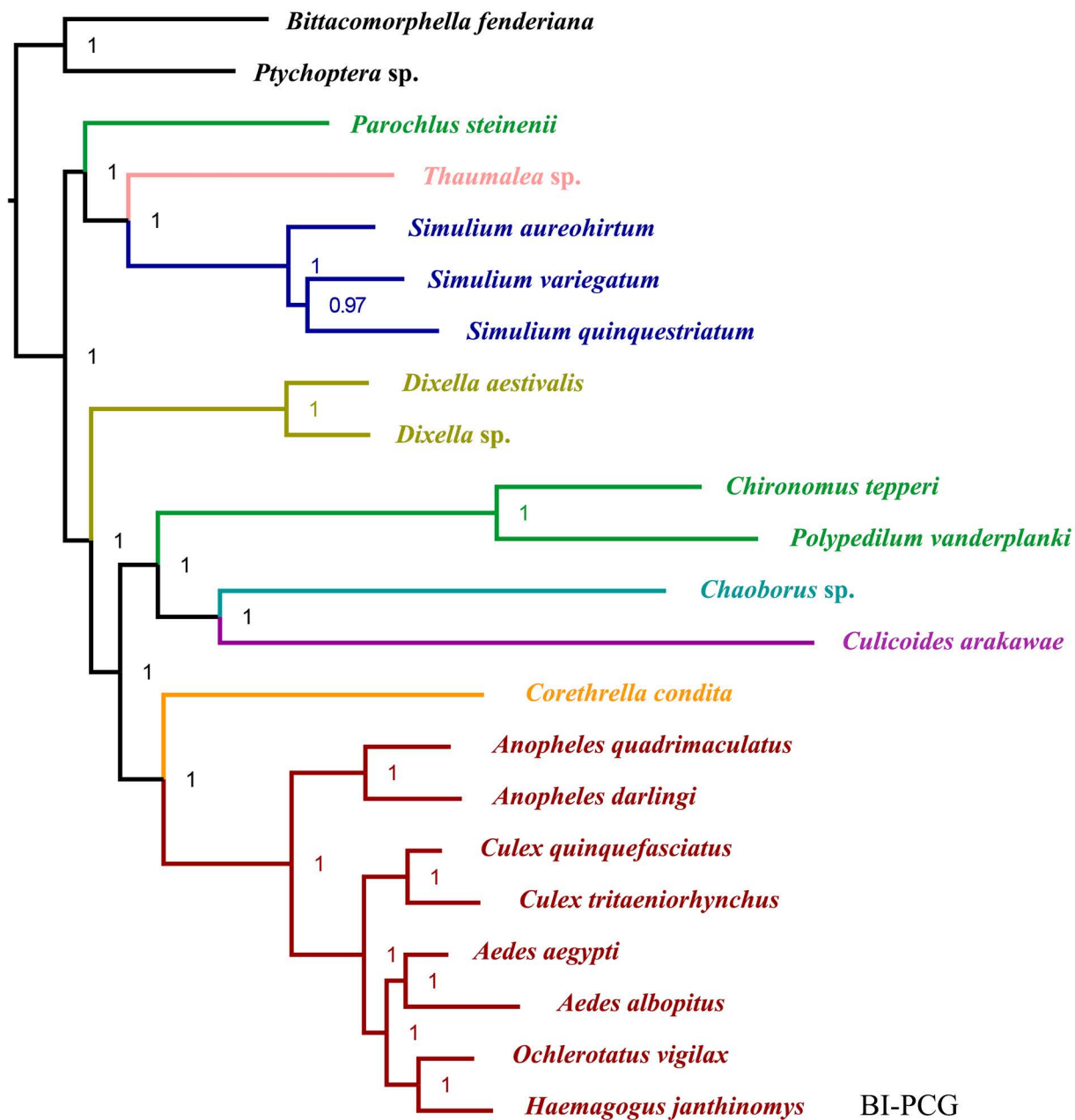


BI-PCGRNA

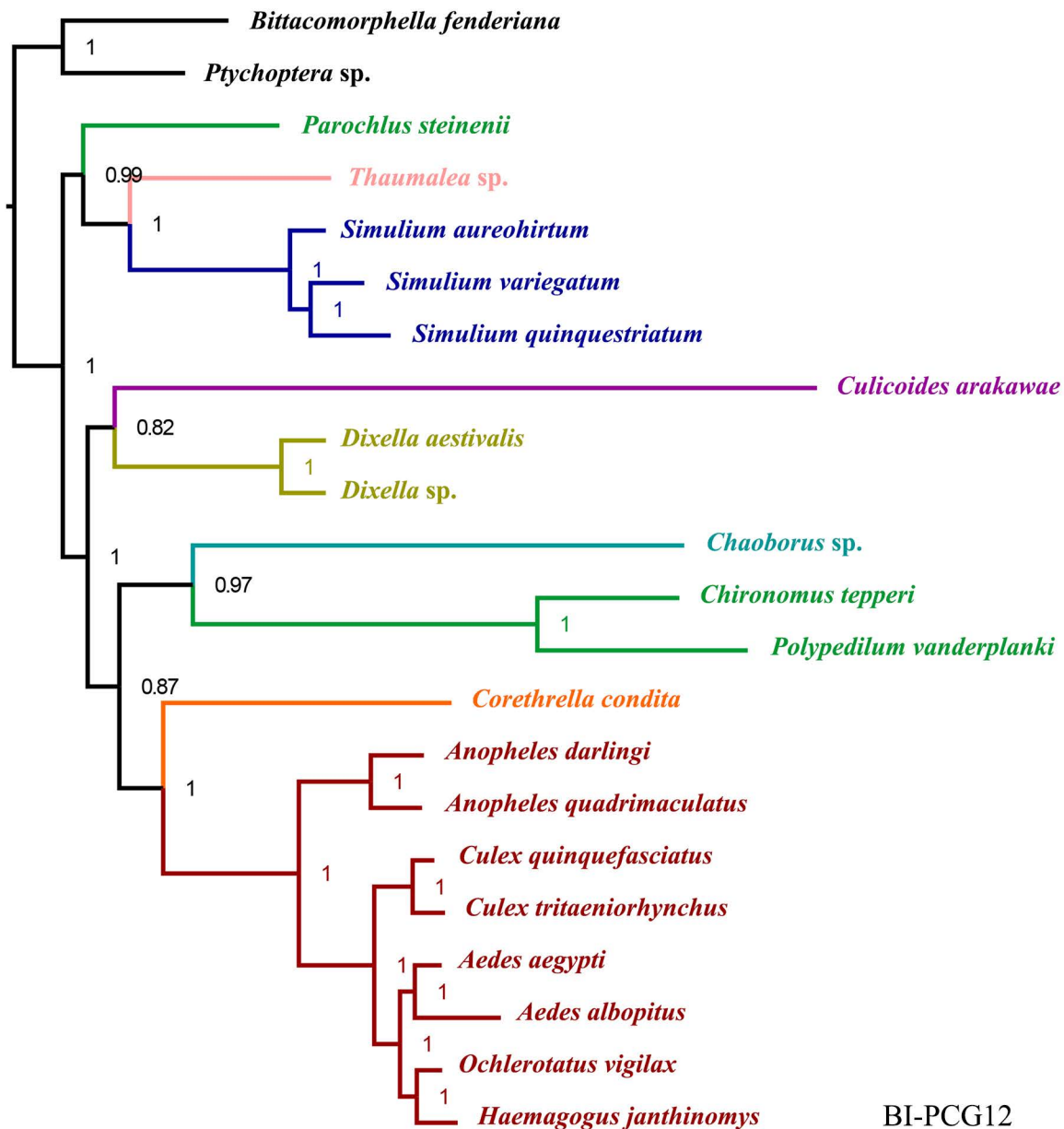


BI-PCG12RNA

0.06

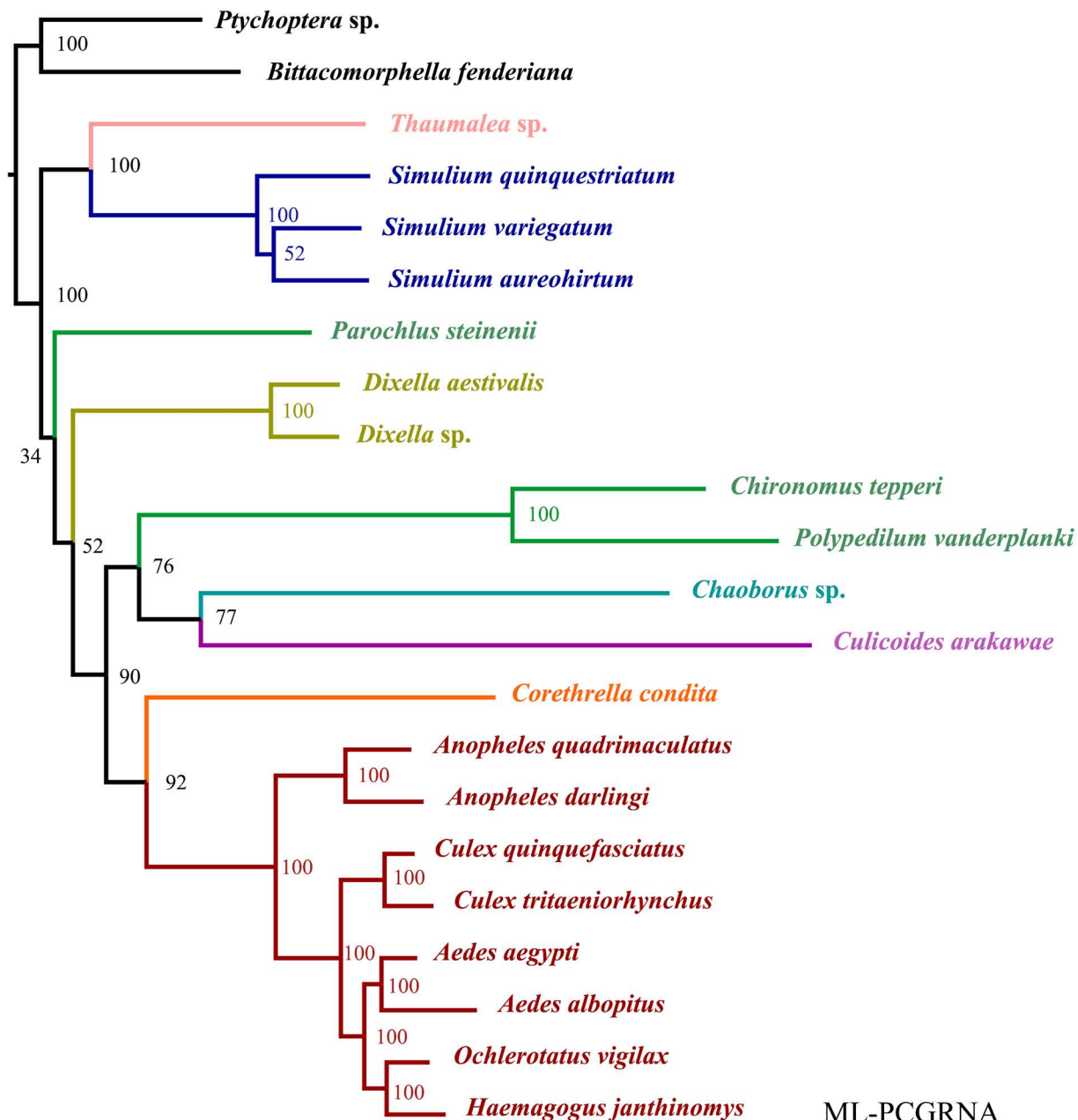


0.4



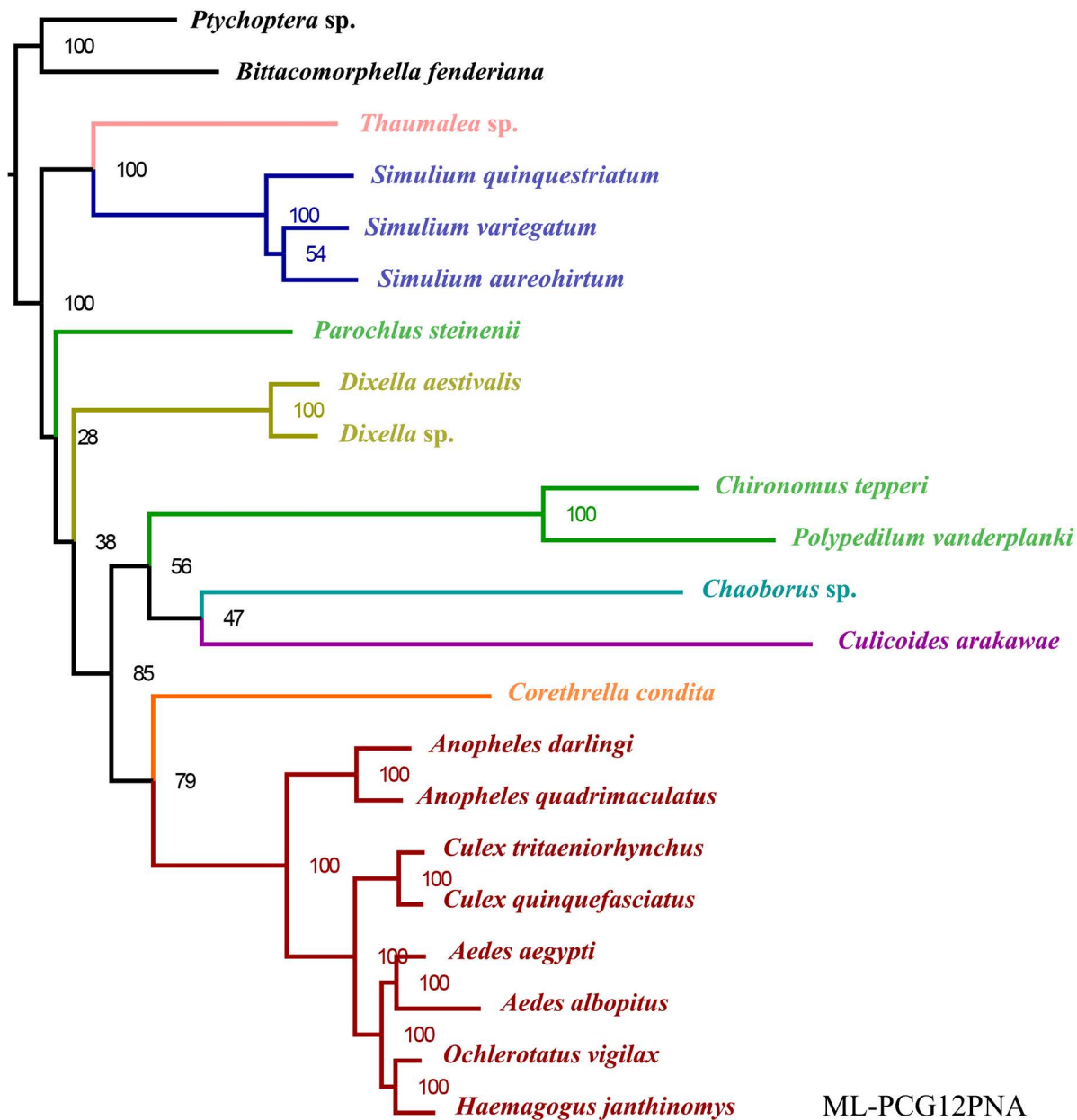
BI-PCG12

0.06



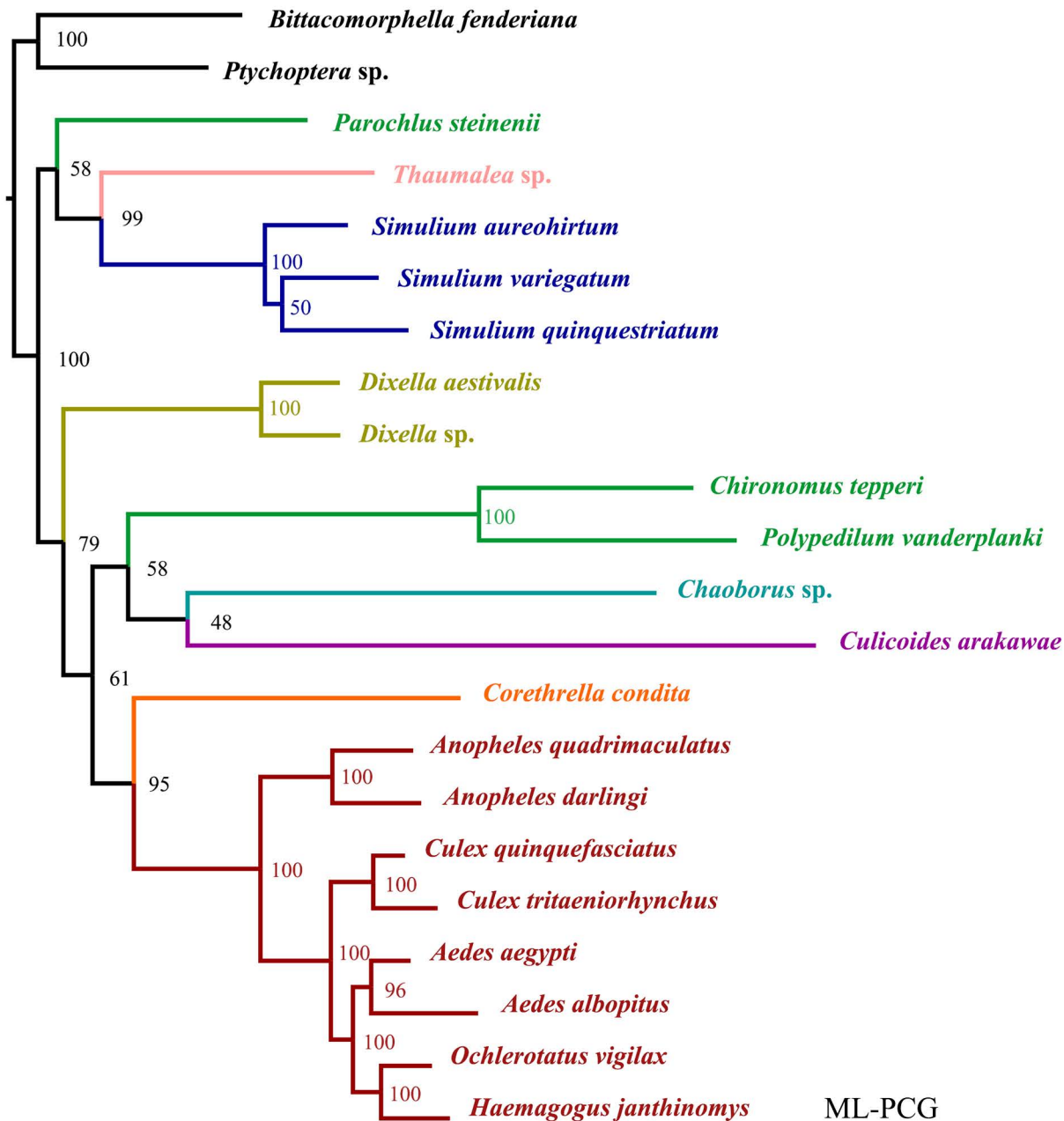
ML-PCGRNA

2.0



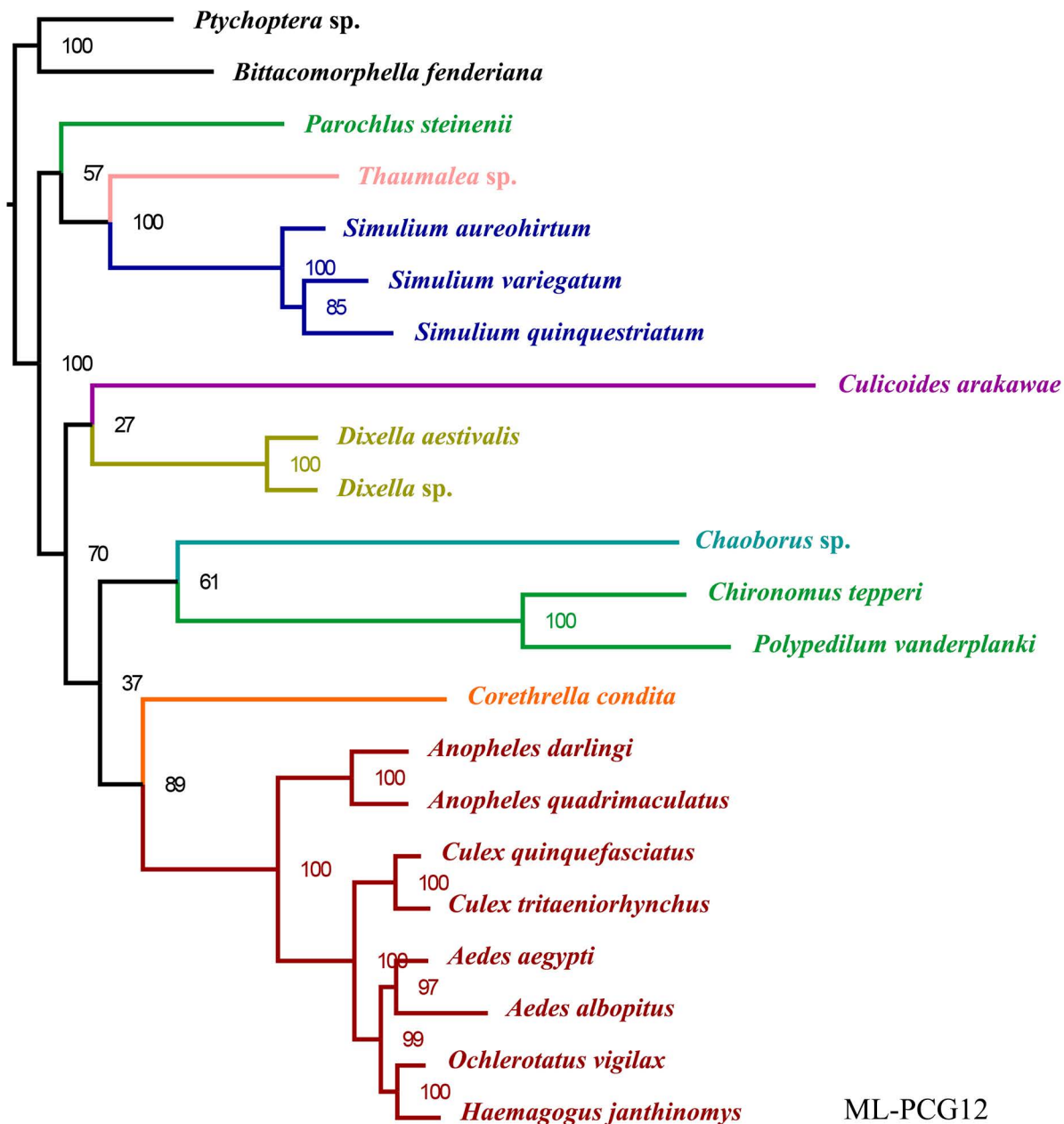
ML-PCG12PNA

0.07



ML-PCG

2.0



ML-PCG12

0.08