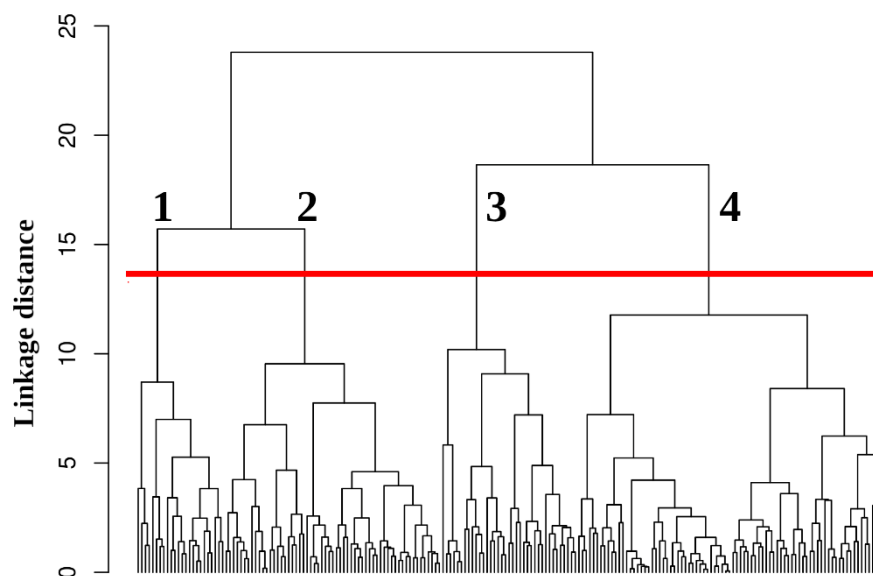
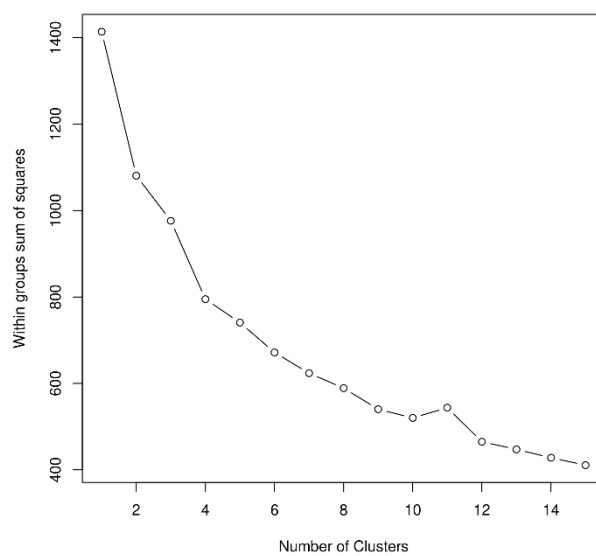


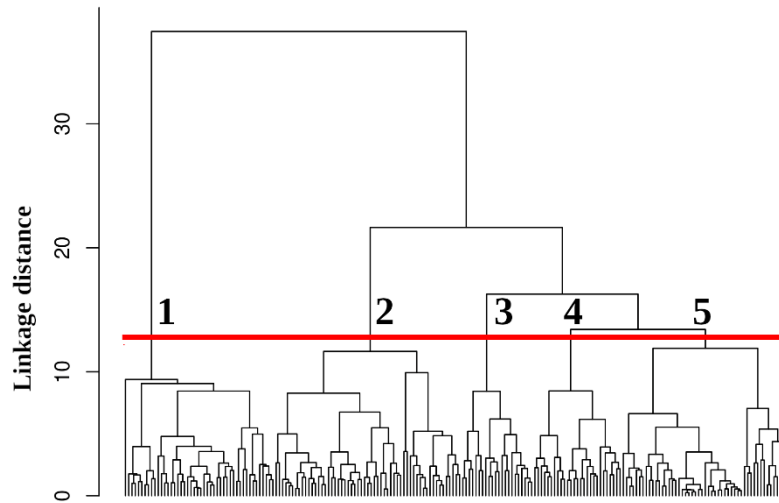
## Supplementary Material



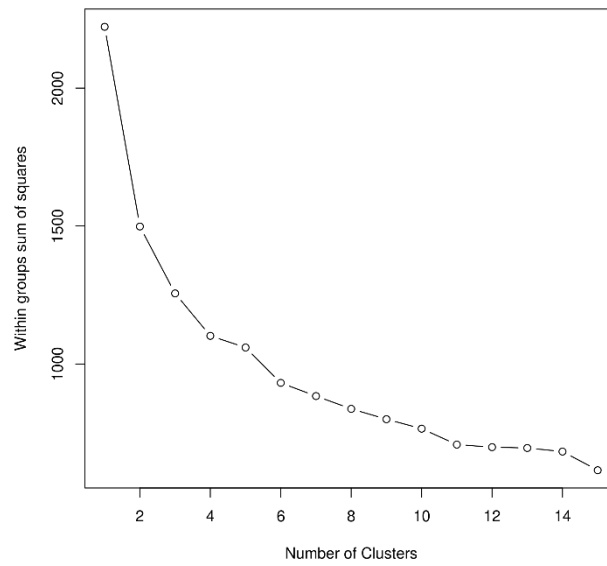
**Figure S1.** Sequence-based hierarchical clustering of complexes formed via MSF. Red line marks the cutoff used to define the four sequence-based clusters.



**Figure S2.** The within groups sum of squares as a function of the number of clusters. k-means clustering was done using sequence parameters as input.



**Figure S3.** Structure-based hierarchical clustering of complexes formed via MSF. Red line marks the cutoff used to define the five structure-based clusters.



**Figure S4.** The within groups sum of squares as a function of the number of clusters. k-means clustering was done using structure parameters as input.