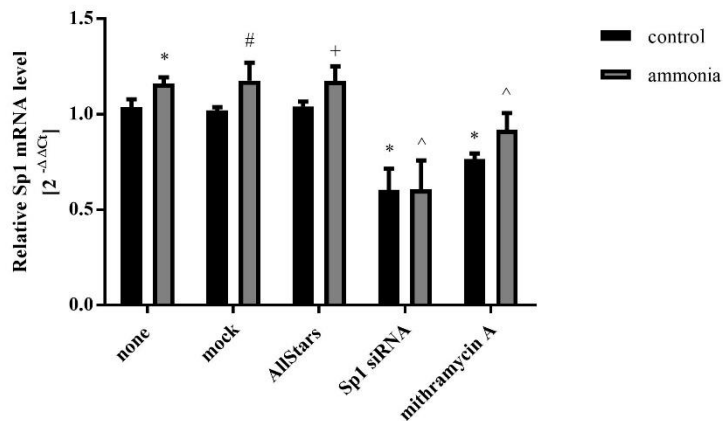


(a)



(b)

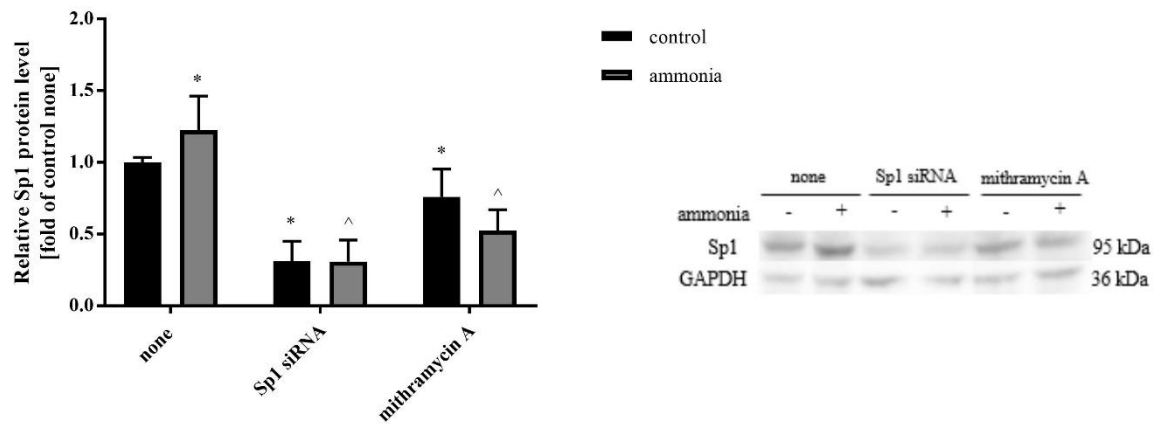
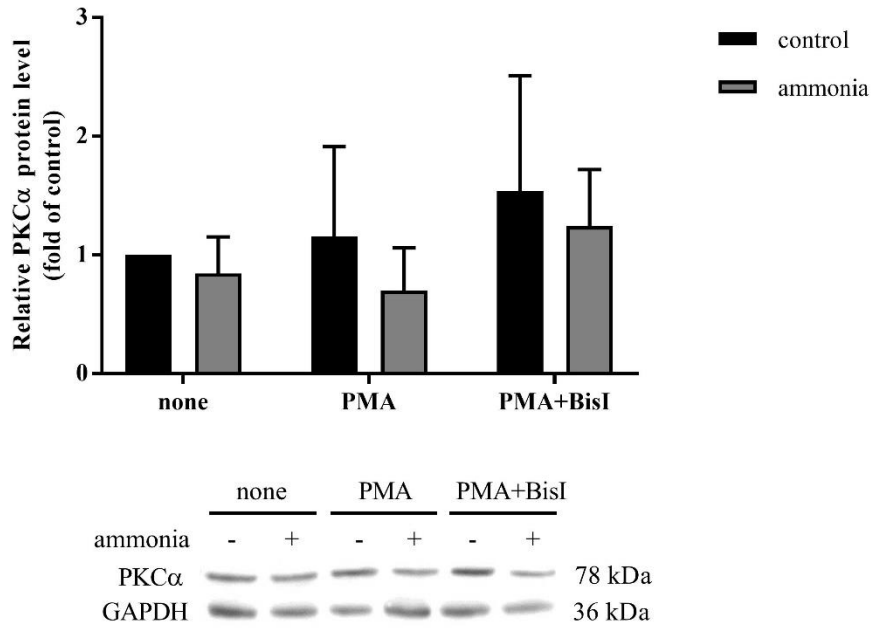


Figure S1. The effectiveness of Sp1 silencing by 5 nM siRNA and 10 mM mithramycin A. (a) Sp1 mRNA level. Mock is the transfection only with the transfection reagent; All Stars is a transfection with siRNA that does not silence any gene. Results are mean \pm SD ($n = 4$). (*) $p < 0.05$ vs control none, (^) $p < 0.05$ vs ammonia none, (#) $p < 0.05$ vs control mock, (+) $p < 0.05$ vs control AllStars negative control; Two-Way ANOVA, Bonferroni post-hoc test; (b) Sp1 protein level. Left panel shows densitometry, right panel shows the representative immunoblots. Results are mean \pm SD ($n = 4$). (*) $p < 0.05$ vs control none, (^) $p < 0.05$ vs ammonia none; Two-Way ANOVA, Bonferroni post-hoc test.

a)



b)

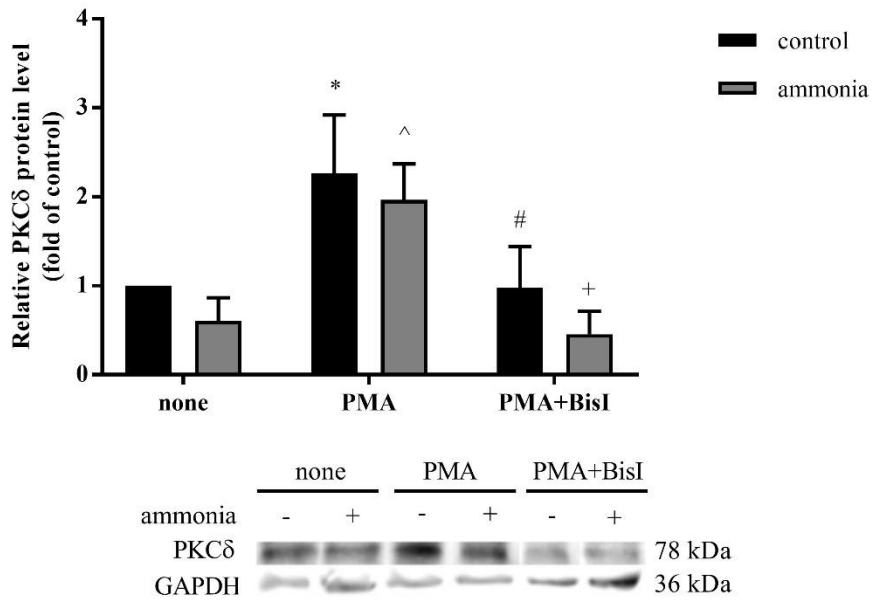


Figure S2. PKC isoforms α (a) and δ (b) protein level after 24-hour treatment with 200 nM PMA and pre-treatment with 1 mM BisI followed by 24-hour treatment with 200 nM PMA. Upper panel shows densitometry, lower panel shows the representative immunoblots. Results are mean \pm SD ($n = 4$). (*) $p < 0.05$ vs control none; (^) $p < 0.05$ vs ammonia none; (#) $p < 0.05$ vs control PMA; (+) $p < 0.05$ vs ammonia PMA; Two-Way ANOVA, Bonferroni post-hoc test.