

Supplementary materials



Figure S1. Two-week-old seedlings of H8107 grown on plates cultivated with 1/2 Hoagland solution.

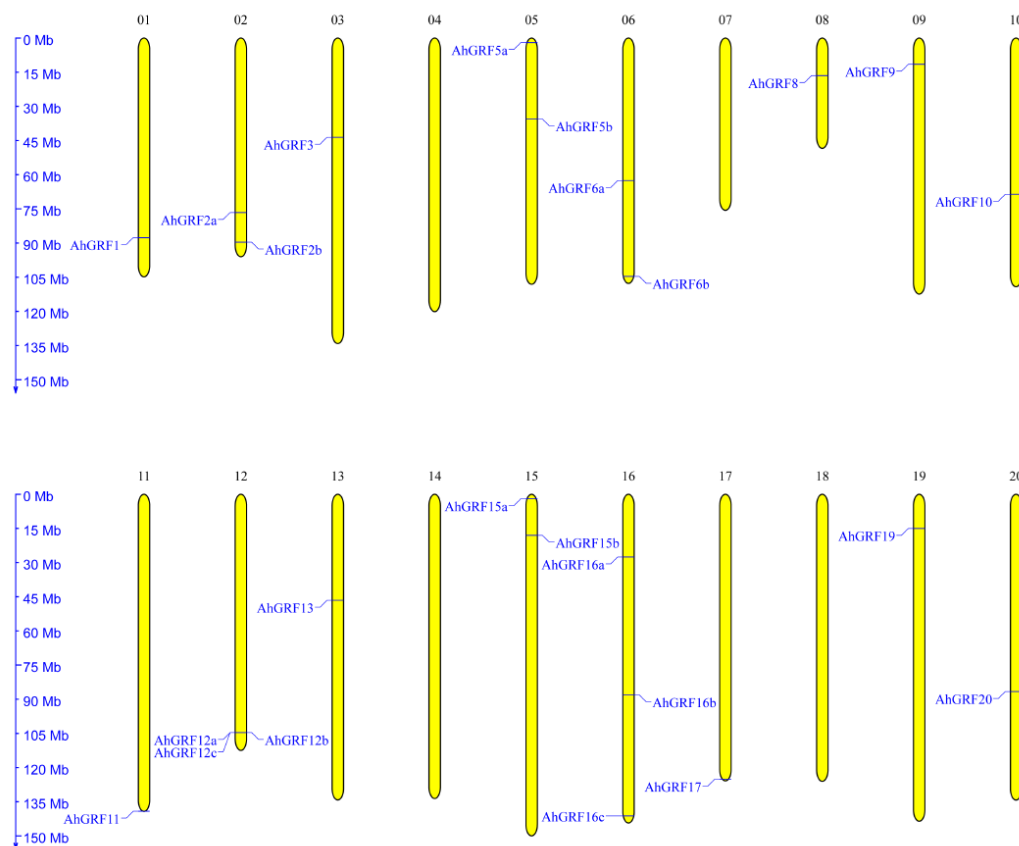


Figure S2. Distribution of *AhGRF* genes in the cultivated peanut genome. The chromosomal position of each *AhGRF* genes was mapped to the cultivated peanut genome. The chromosome number is indicated above each chromosome.

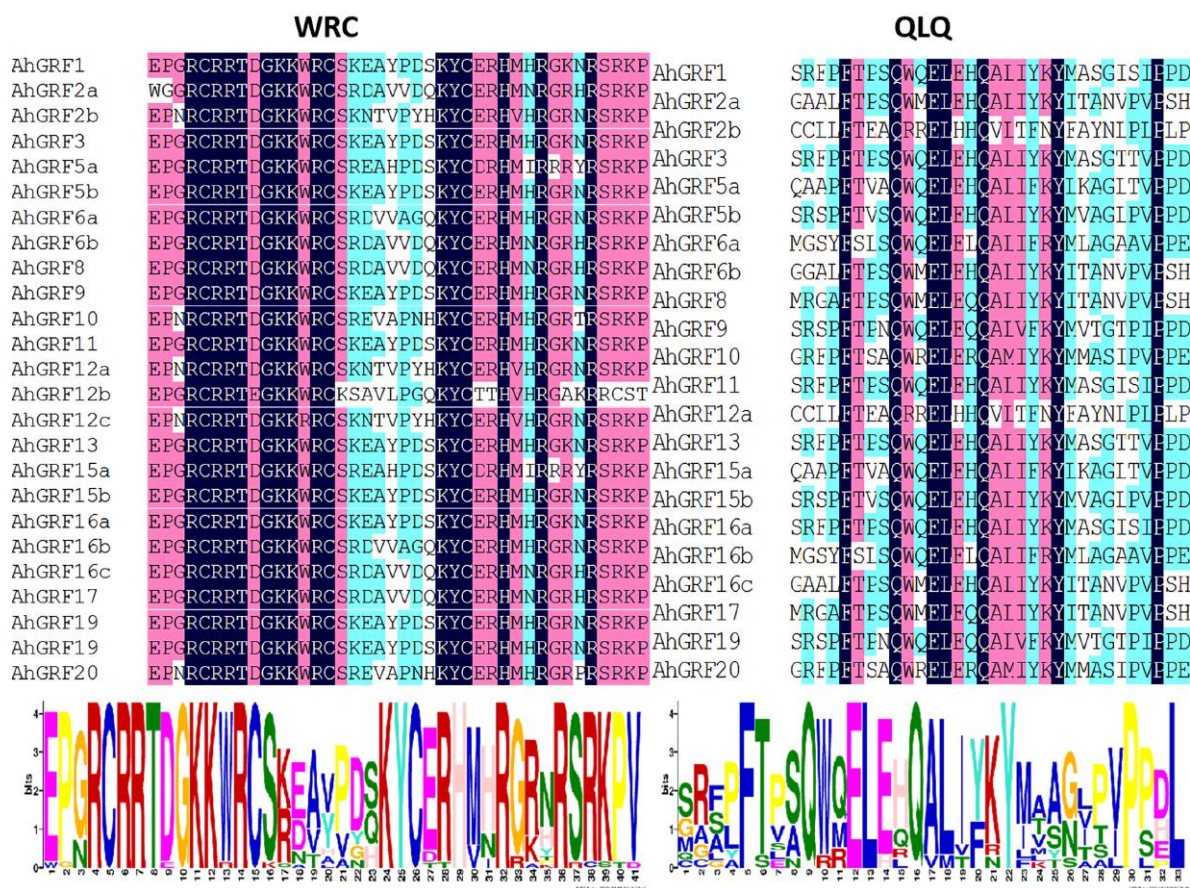


Figure S3. Sequence alignment of WRC and QLQ motifs in *AhGRF* genes.