

Enriched Lipid Rafts

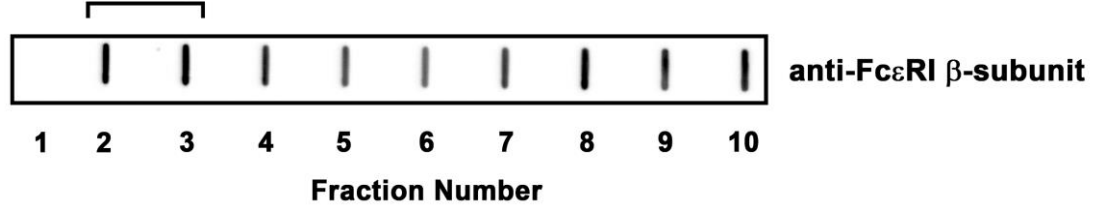


Figure S2. Immuno-blot analysis of the β -subunit of Fc ϵ RI from RBL-2H3 MC lipid rafts. Lysates of RBL-2H3 MCs were fractionated by sucrose density gradient ultracentrifugation, and fractions were immunoblotted using a pool of antibodies against the β -subunit of Fc ϵ RI. The β -subunit is found in all fractions. Data is representative of 3 independent experiments.