

Supplementary Figure S1

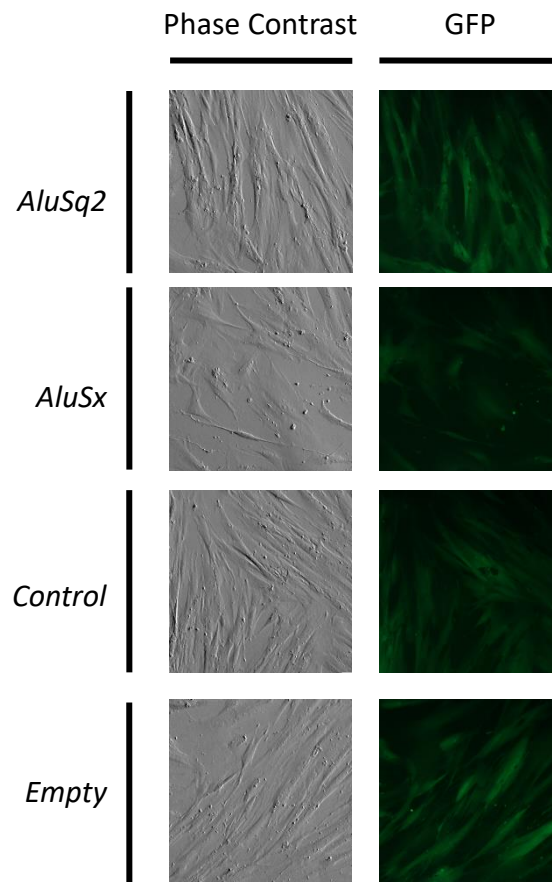


Figure S1. IMR90 cells overexpressing *AluSq2*, *AluSx*, Control or an empty lentivirus vector. Stable integrants were selected with puromycin treatment for two weeks. Only stably transformed cells were visualized as GFP-fluorescent cells. No big changes in cell morphology are observed comparing cells overexpressing *AluSq2*, *AluSx* or a control with cells transformed with an empty lentivirus vector.