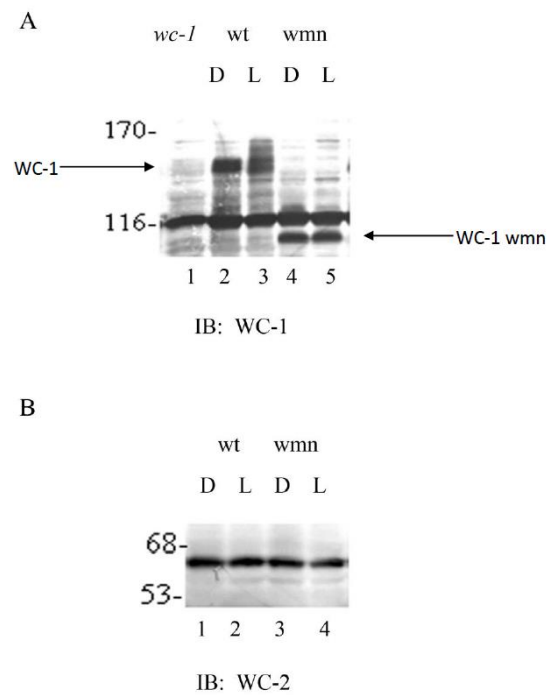
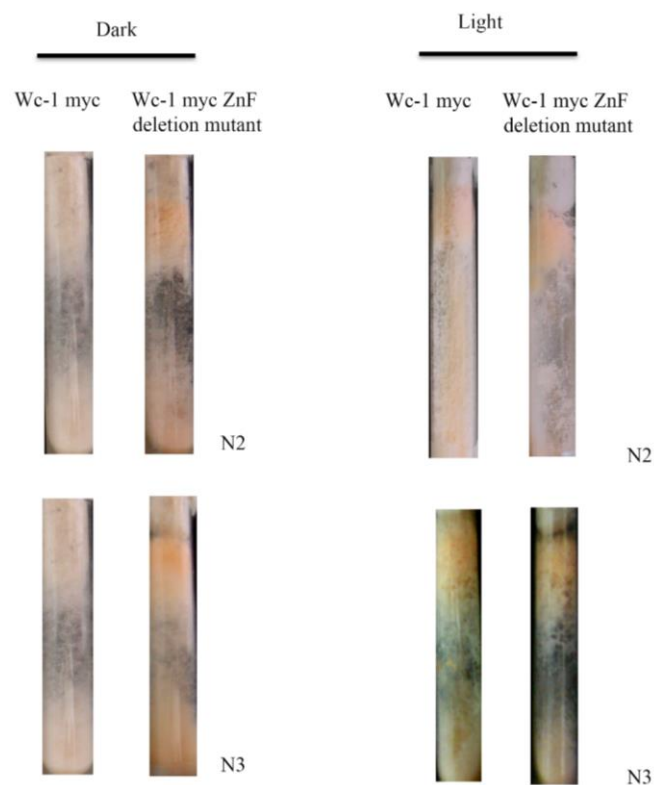


## Supplementar Figures

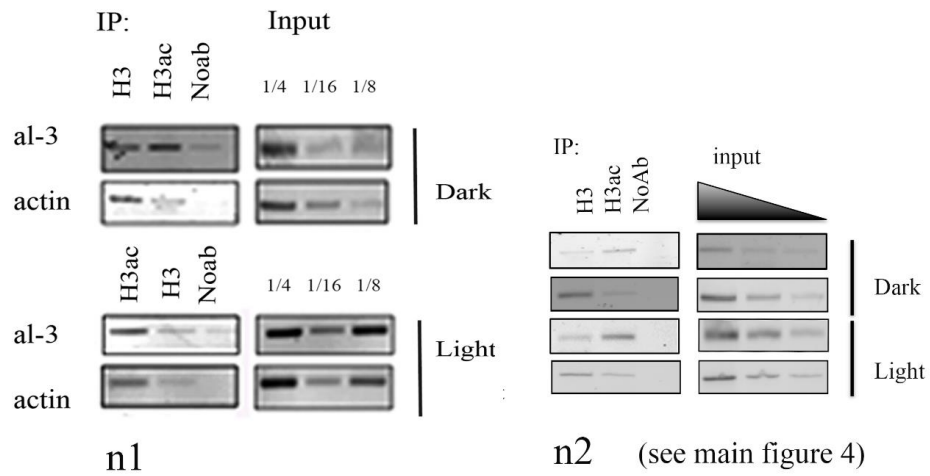


**Figure S1.** (A) WC-1 was detected on extracts (input used for IP in Figure 1C) obtained from *wc-1* null mutant (negative control), wt and *wmn* mutant in the dark and after illumination. Arrows indicate different sizes for WC-1 in Wt and *wmn* mutant. (B) WC-2 was detected in wt and *wmn* samples.

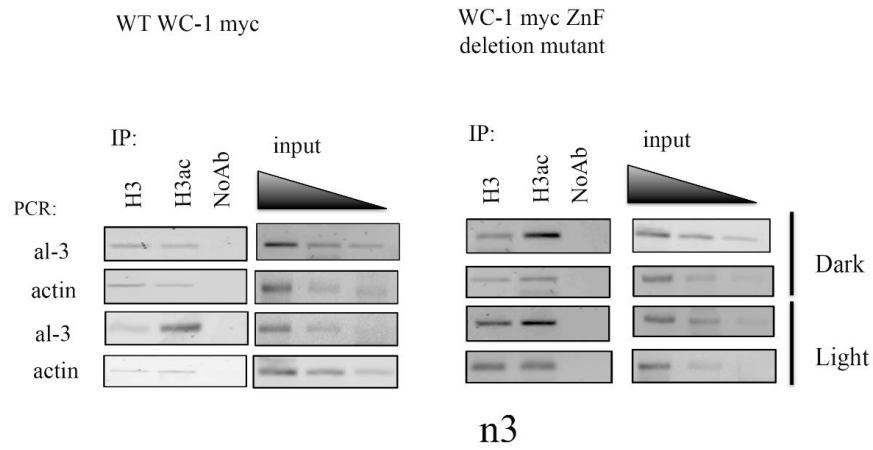


**Figure S2.** Phenotype analysis related to Figure 3B. Replica experiments performed on WT WC-1 Myc and WC-1 Myc ZnF  $\Delta$  mutant following the protocol described in Figure 3B.

A



B



**Figure S3. (A)** Row data representing ChIP replicas used for quantification in Figure 4D (n1, n2 and n3 showed in (B)). Replica n2 is shown in the main figure as representative example. **(B)** Comparison between representative ChIP analyses performed in wt WC-1 Myc and ZnF  $\Delta$  mutant.