



Resolved Hyperfine at L-band for High Spin CoEDTA, A Model for Co Sites in Proteins

William E. Antholine

Department of Biophysics, Medical College of Wisconsin, Milwaukee, WI 53226, USA; wantholi@mcw.edu; Tel.: 414-955-4032

Received: 16 April 2019; Accepted: 10 May 2019; Published: date

Supplemental Figure

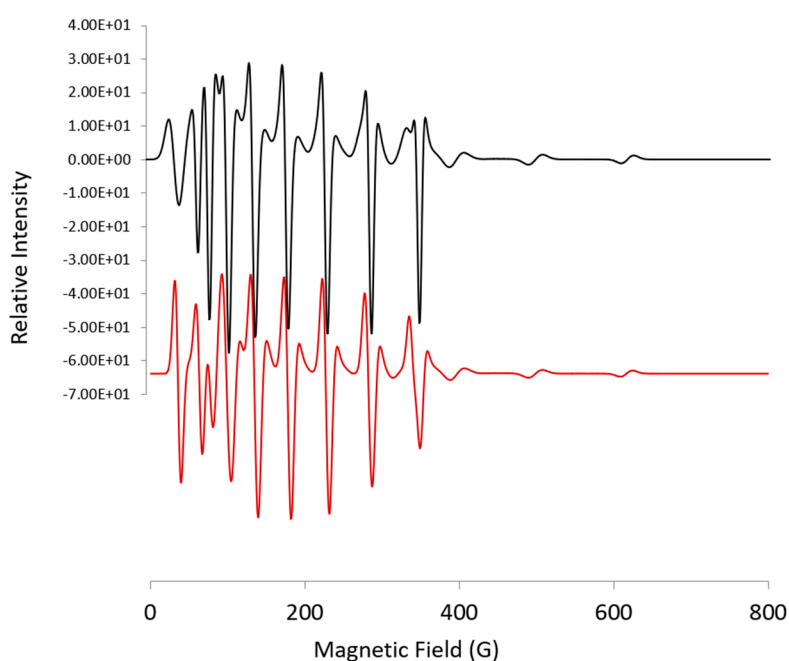


Figure S1. Simulated L-band spectra: $g = [5, 4.31, 2.14]$; $A = [300, 24, 162]$; $mwFreq = 1.37$ GHz; $HStrain = [100, 25, 50]$ black trace, cone-shaped lines dominate; $HStrain = [50, 50, 50]$ red trace, S-shaped lines dominate.



© 2019 by the authors. Submitted for possible open access publication under the terms and conditions of the Creative Commons Attribution (CC BY) license (<http://creativecommons.org/licenses/by/4.0/>).