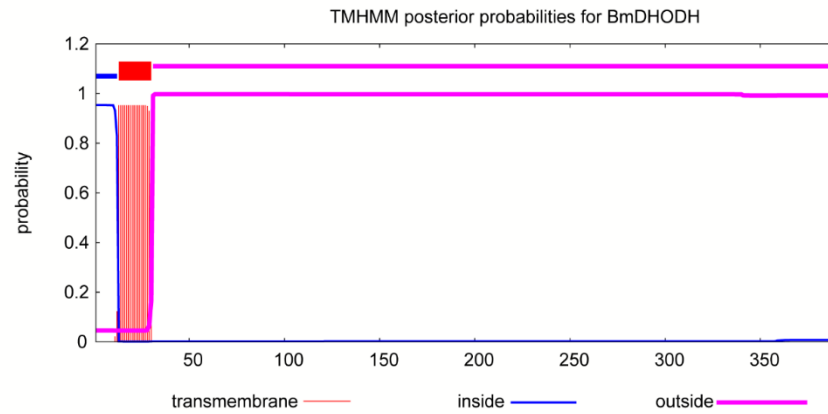
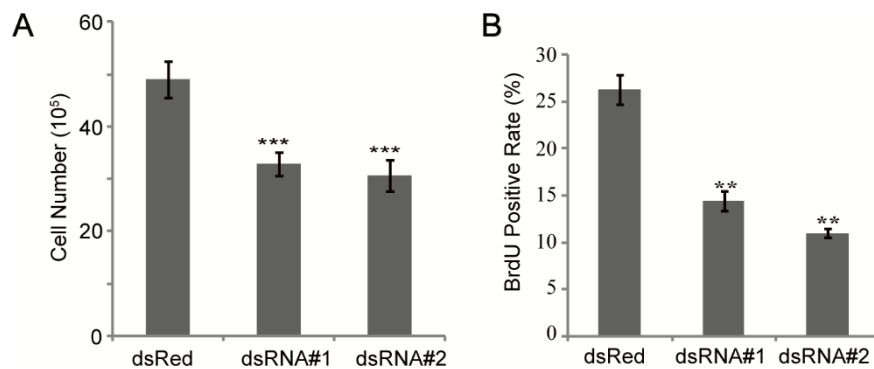


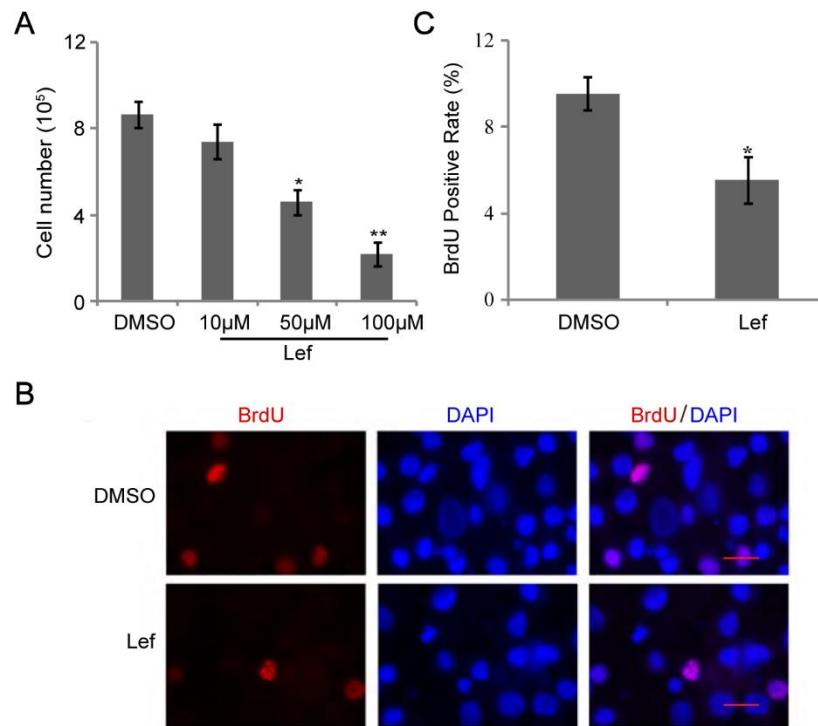
## Supplementary Material



**Figure S1.** The transmembrane domain predication of BmDHODH.



**Figure S2.** (A) Cell number was counted after stained by trypan blue, after dsRNA interference for 48 h, and dsRed was used as a control. (B) Cells were grown on coverslips and after dsRNA interference for 48 h respectively, and dsRed was used as a control. BrdU-positive cells were calculated randomly at least 10 fields under microscopy. All data represent the average  $\pm$  SD of at least three independent experiments. Statistical analysis was performed using the 2-tailed Student's t-test, \*\* $p < 0.01$ , \*\*\* $p < 0.001$ .



**Figure S3.** (A) The cell number was counted after stained by trypan blue after treated with leflunomide for 96 h, DMSO was used as a control. (B) and (C) Cells were grown on coverslips and treated with either 100  $\mu$ M leflunomide or DMSO for 96 h respectively. Cells were stained with an antibody against BrdU (red), counterstained with DAPI (blue), scale bar, 100  $\mu$ m. BrdU-positive cells were calculated randomly at least 10 fields under microscopy. All data represent the average  $\pm$  SD of at least three independent experiments. Statistical analysis was performed using the 2-tailed Student's t-test, \* $p$  < 0.05, \*\* $p$  < 0.01.