

Supplementary Materials: The Commonly Used Bactericide Bismethiazol Promotes Rice Defenses against Herbivores

Pengyong Zhou, Xiaochang Mo, Wanwan Wang, Xia Cheng and Yonggen Lou

Table S1. Primers and probes used for QRT-PCR of target genes.

Gene	RGAP ID	Primer (5'-3')	Probe (5'-3')
<i>OsACT</i>	Os03g50885	F: TGGACAGGTTATCACCATTGGT	CGTTTCCGCTGCCCTGAGGTCC
		R: CCGCAGCTTCCATTCCTATG	
<i>OsAOS1</i>	Os03g55800	F: CGAGCTCTTCCTCCGATACG	ACCTCCACGCTCGGCTCATCTGTC
		R: GTCAGAAGGTGGCCTTCTTGAG	
<i>OsAOS2</i>	Os03g12500	F: GCGCACGGGCTATTTTC	CGAGTAGTTAGGCGTCCAAAGTTTCGGGA
		R: CGATCACCGTTCACGATGAA	

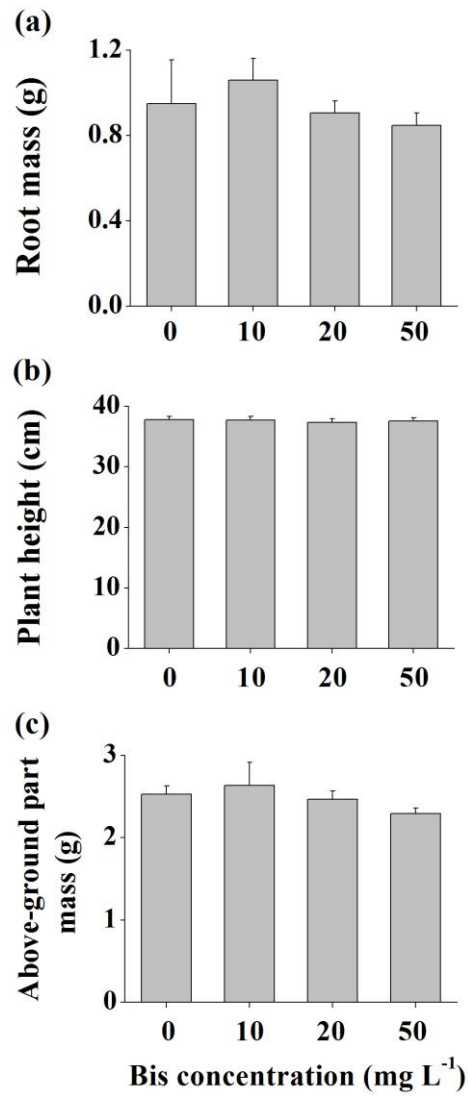


Figure S1. Growth phenotypes of bismethiazol-treated and control rice plants. Mean root mass (a), plant height (b) and above-ground part mass (c) (+ SE, $n = 6$) of rice plants that had been grown in nutrient solution with different concentrations of bismethiazol for 10 days.

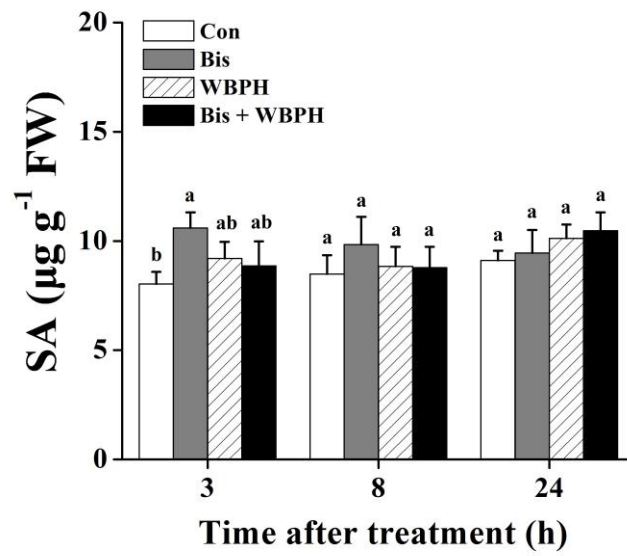


Figure S2. Mean levels (+ SE, $n = 5$) of SA in leaf sheaths of rice plants with different treatments. Con, control plants; Bis, bismethiazol-treated plants; WBPH, WBPH-infested plants; Bis + WBPH, bismethiazol + WBPH-treated plants. These treatment methods are described in Materials and Methods. Letters indicate significant differences between different treatments ($p < 0.05$, Duncan's multiple-range test).

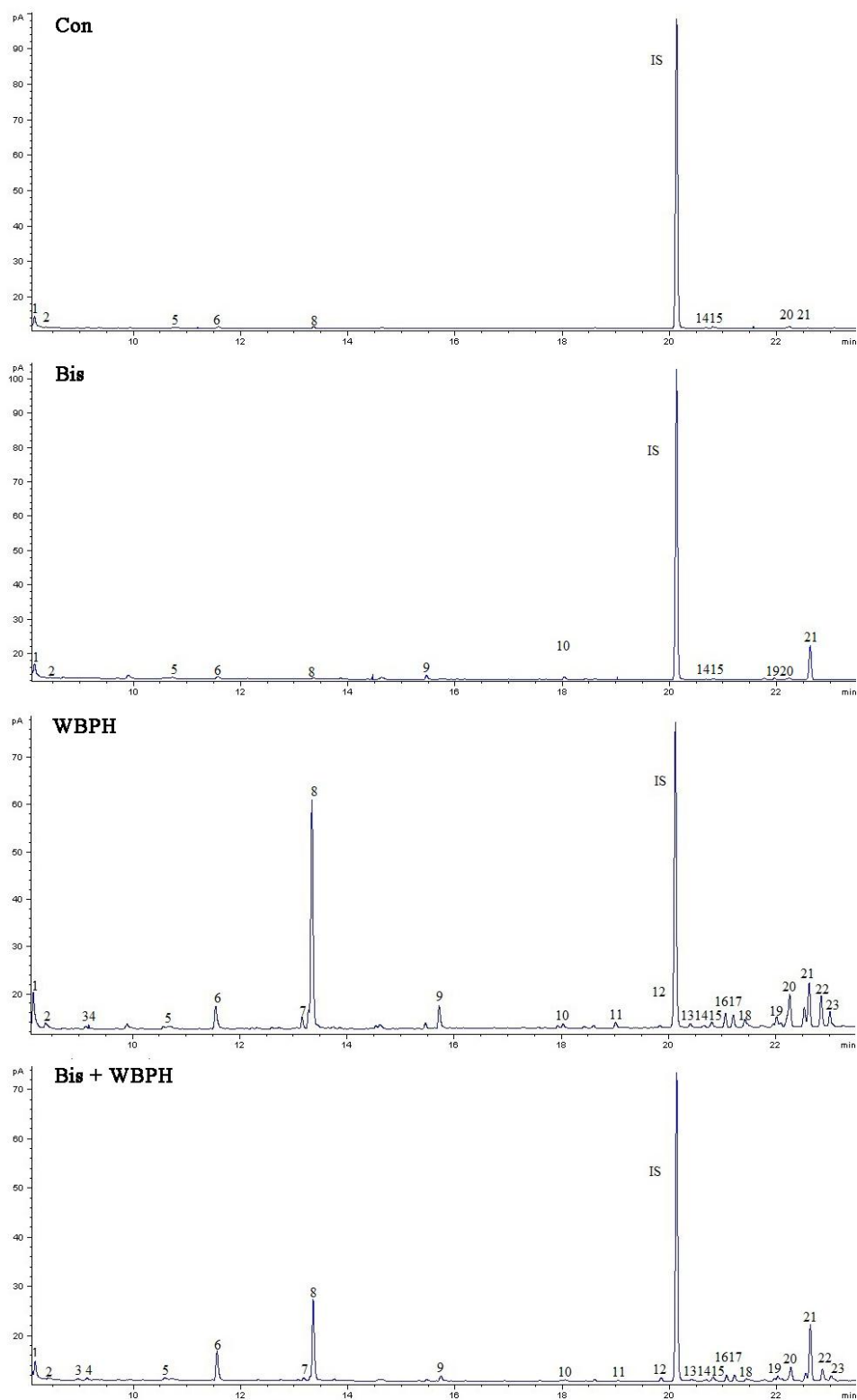


Figure S3. Typical chromatograms obtained by head space collections from plants with different treatments. Con, control plants; Bis, bismethiazol-treated plants; WBPH, WBPH-infested plants; Bis + WBPH, bismethiazol + WBPH-treated plants. These treatment methods are described in Materials and Methods. Numbers represent chemicals that are the same as in Table 1.