

Separation options for phosphorylated osteopontin from transgenic microalgae *Chlamydomonas reinhardtii*

Ayswarya Ravi ¹, Shengchun Guo ¹, Beth Rasala ², Miller Tran ², Stephen Mayfield ³ and Zivko L. Nikolov ^{1*}

Supplementary data

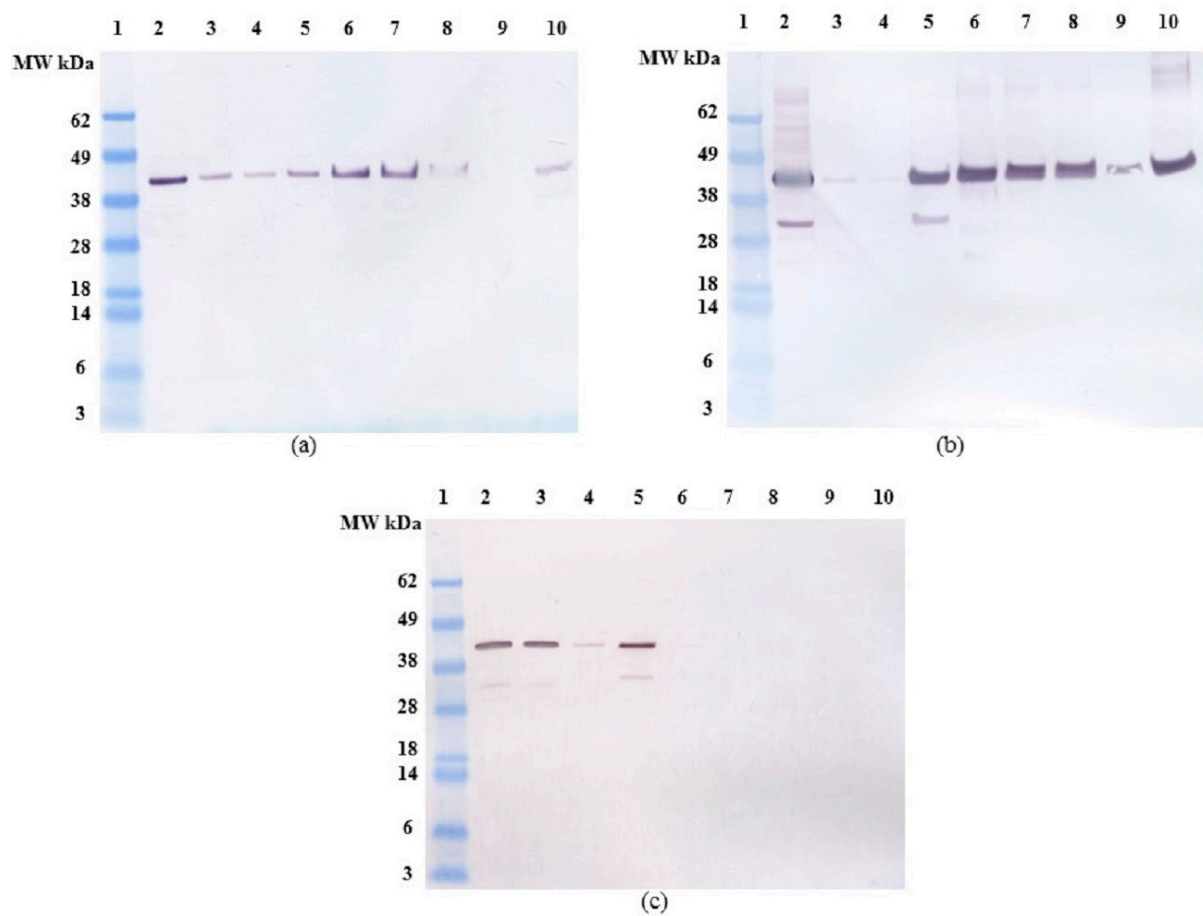


Figure S1. Anti-FLAG western blot of (a) *E. coli* OPN binding and elution profile without 250 mM NaCl (b) *C. reinhardtii* OPN binding and elution profile with 250 mM NaCl (c) *E. coli* OPN binding and elution profile with 250 mM NaCl from ceramic hydroxyapatite (CHT) resin. All samples diluted to <1 mg/mL total soluble protein (TSP). **Lane 1.** Molecular weight (MW) marker, **lane 2.** Clarified lysate, **lane 3.** Supernatant, **lane 4.** Washes 3 column volumes (CV), **lane 5.** Elution with 100 mM NaP, **lane 6.** Elution with 250 mM NaP, **lane 7.** Elution with 500 mM NaP, **lane 8.** Elution with 1000 mM NaP, **lane 9.** Elution with 1500 mM NaP, **lane 10.** Elution with 100 mM NaOH. All elutions were performed with 5 CV of the respective buffer.

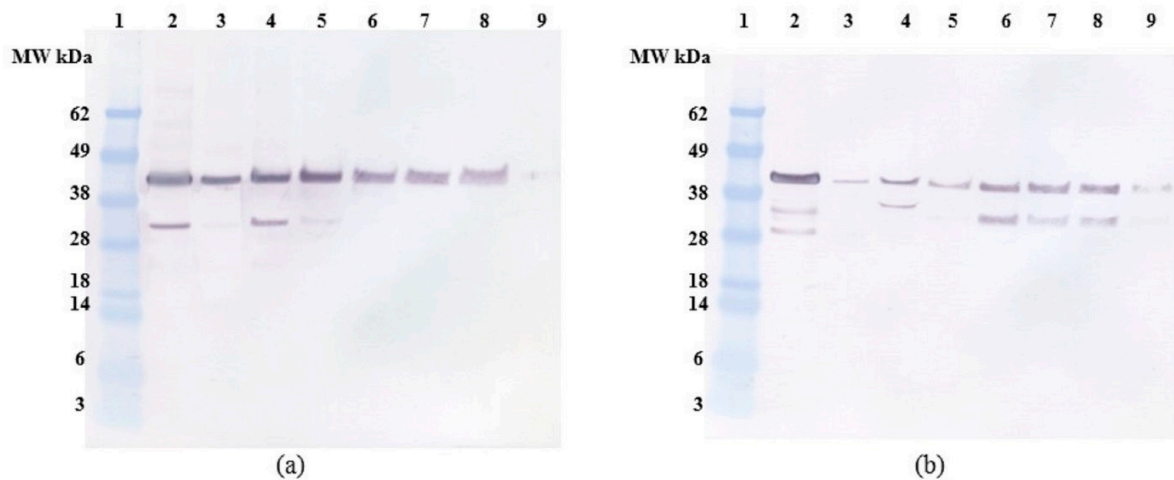


Figure S2. Anti-FLAG western blot of (a) *C. reinhardtii* OPN (b) *E. coli* OPN binding and elution profile from Ga-IMAC resin. All samples diluted to <1 mg/mL TSP. **Lane 1.** MW marker, **lane 2.** Clarified lysate, **lane 3.** Supernatant, **lane 4.** Washes (3 CV), **lane 5.** Elution with 100 mM NaP, **lane 6.** Elution with 250 mM NaP, **lane 7.** Elution with 500 mM NaP, **lane 8.** Elution with 1000 mM NaP, **lane 9.** Elution with 1500 mM NaP. All elutions were performed with 5 CV of the respective buffer.

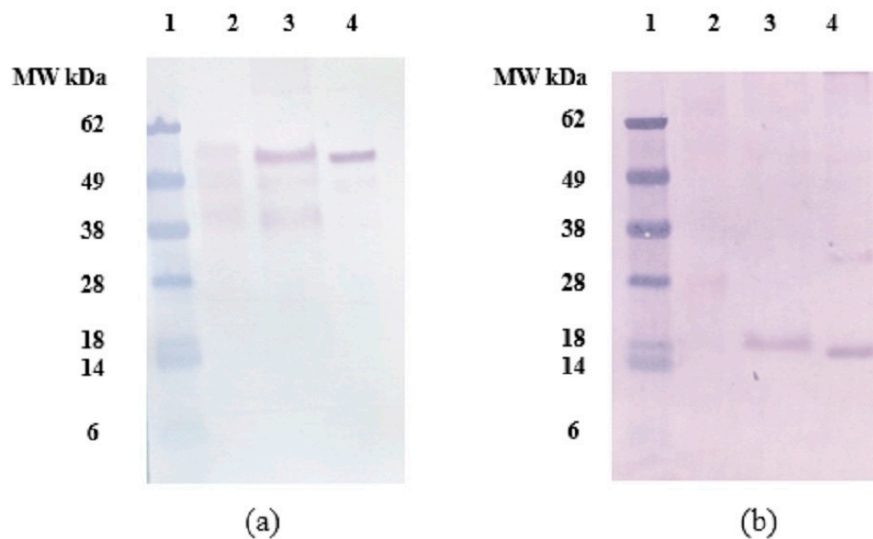


Figure S3. (a) Anti-Rubisco large subunit (b) Anti-Rubisco small subunit western blots of *C. reinhardtii* OPN samples. All samples diluted to <1 mg/mL TSP. **Lane 1.** MW marker, **lane 2.** *C. reinhardtii* clarified lysate, **lane 3.** Elution with 100 mM NaOH from ceramic hydroxyapatite (CHT) resin, **lane 4.** Elution with 200 mM NaCl from Capto Q resin. All elutions were performed with 5 CV of the respective buffer.