

Figure S1. DEPs in VEGF signaling pathway (A) and PI3K-AKT signaling pathway (B). Block in green: DEPs; in red: gene detected in transcriptome of PPCs.

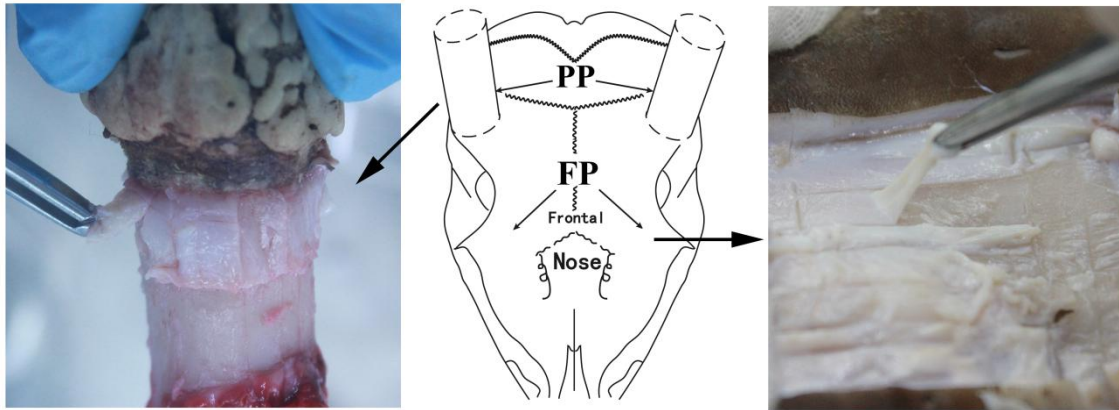


Figure S2. Illustration of tissue location. PP: pedicle periosteum, the tissue which gives rise to regenerating antlers. FP: facial periosteum, the tissue that is nearby the PP but does not have capacity to regenerate antler;

