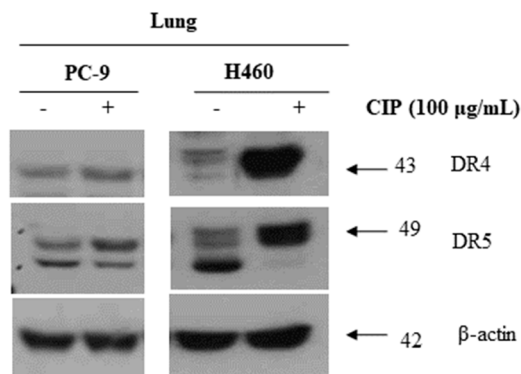


**Figure S1.** CIP exposure translocation of CHOP protein in nucleus. A549 cells were cultured in the presence or absence of 100 µg/ml CIP for 24 h and fractionated. The filters were also probed for PARP and Actin to show successful fractionation to nuclear and cytoplasmic fractions, respectively.



**Figure S2.** CIP-induced DR5 and DR4 expression in lung cancer cells. PC-9 and H460 cancer cells were treated with CIP for 24 h and whole cell extracts were analyzed by western blotting. Equal amounts of protein (40 µg) were separated by SDA-PAGE and immunoblotted.