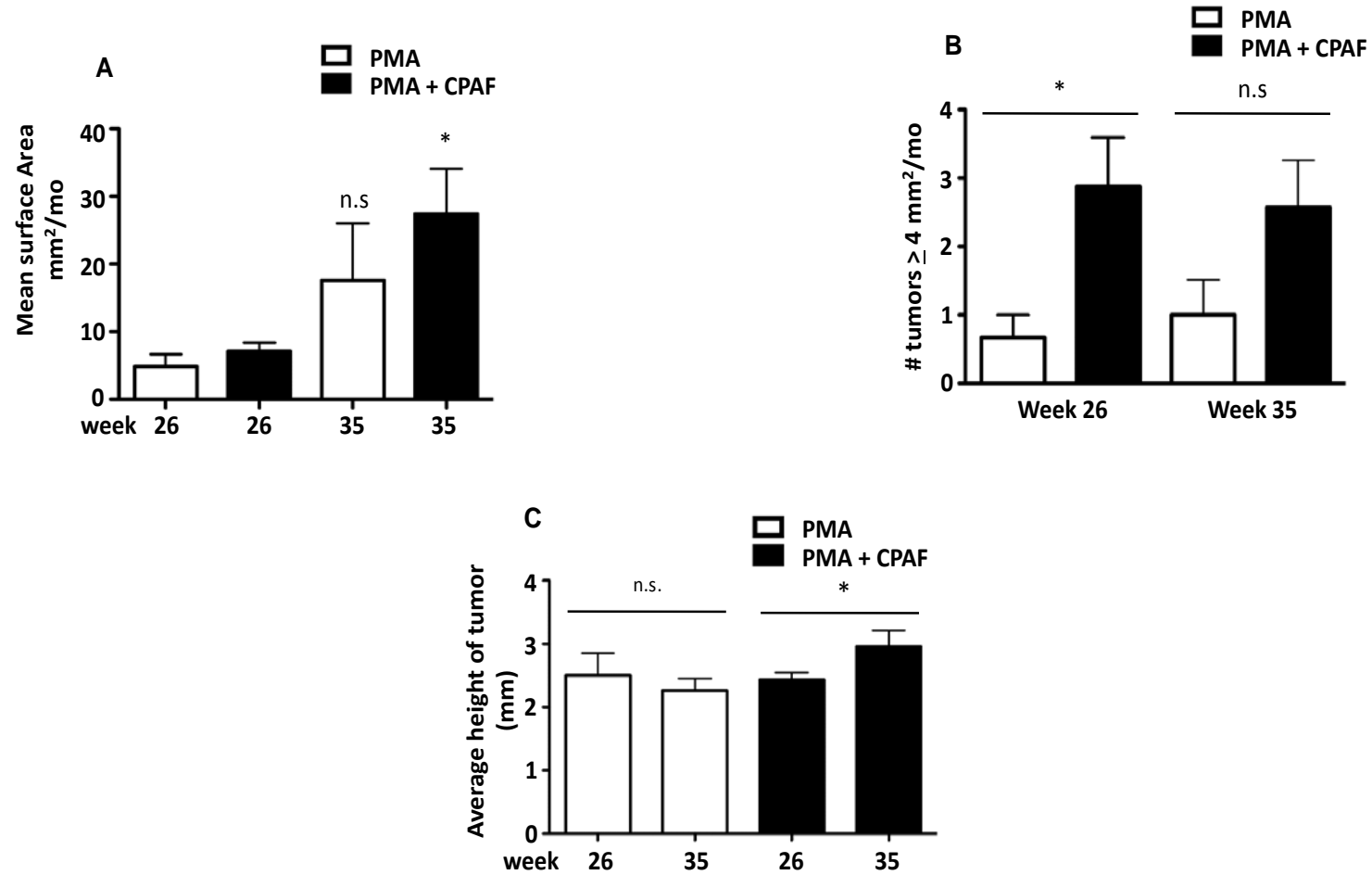
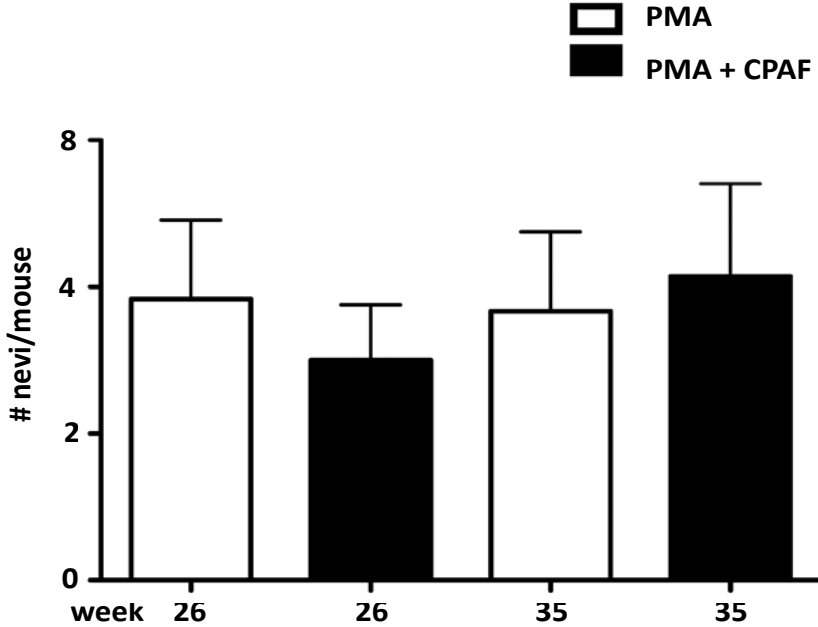


Supplementary Figure 1



Supplemental Figure 1. Systemic CPAF increases the growth of tumors. A) The mean surface area (mm²/mouse) in PMA (white) and PMA+CPAF (black) at 26 and 35 weeks are shown. *denotes statistical significance relative to 26 week PMA+CPAF by two-tailed student t-test ($p < 0.05$). B-C) The average height of tumor (mm) or tumors of ≥ 2 mm height/mouse in PMA (white) and PMA+CPAF (black) groups at 26 and 35 weeks are shown. *denotes statistical significance by two-tailed student t-test ($p < 0.05$).

Supplementary Figure 2



Supplemental Figure 2. Systemic CPAF does not modulate the number of melanocytic nevi. The number of melanocytic nevi was counted at every week. The data represent as number of nevi/mouse at week 26 and 35.