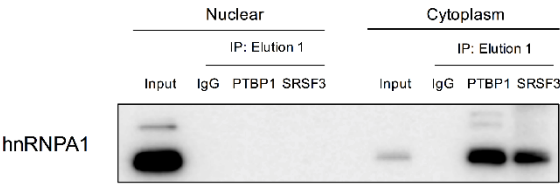


1 **SRSF3, a splicer of the *PKM* gene, regulates to cell**
2 **growth and maintenance of cancer-specific energy**
3 **metabolism in colon cancer cells**

4 Yuki Kuranaga ¹, Nobuhiko Sugito ¹, Haruka Shinohara ¹, Takuya Tsujino ², Kohei Taniguchi ^{3,4},
5 Kazumasa Komura ^{2,4}, Yuko Ito ⁵, Tomoyoshi Soga ⁶ and Yukihiro Akao ^{1,*}



6
7 **Supplementary Figure 1.** Western blot of hnRNPA1 from the immunoprecipitated samples. The
8 detail is shown in Materials and Methods section.