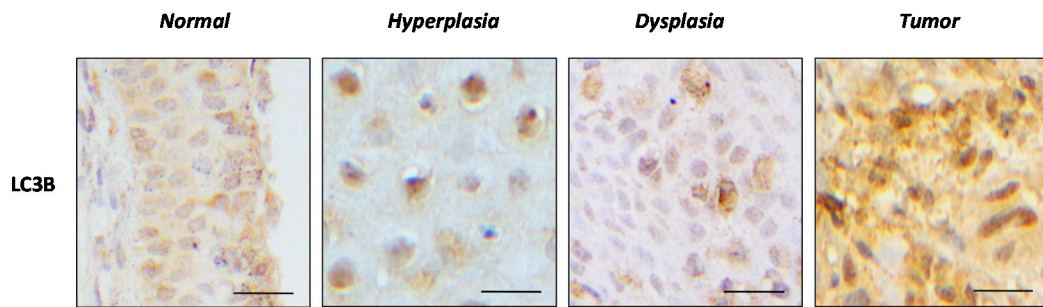
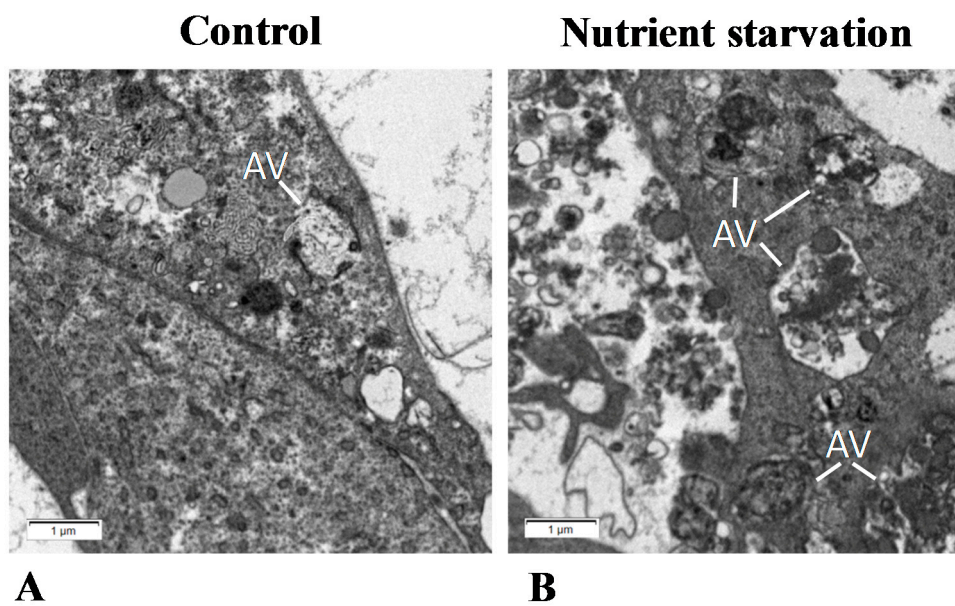


## Head and Neck lesions

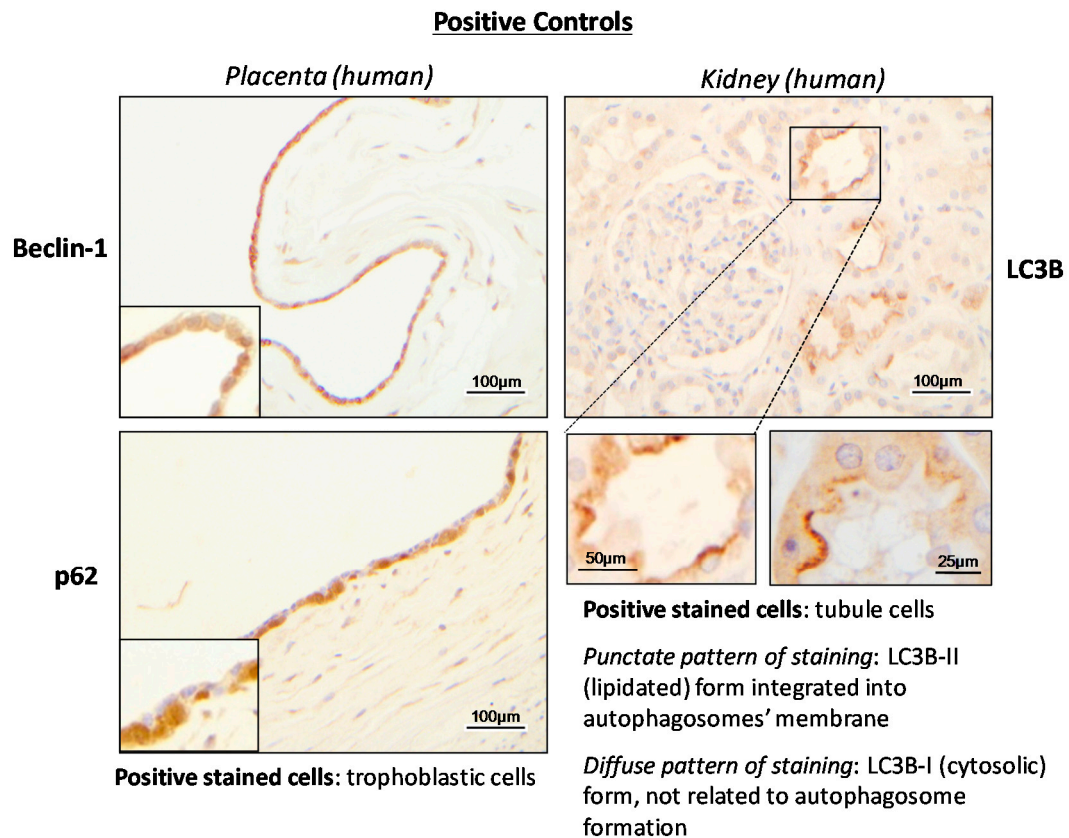


**Figure S1.** Higher magnification of the insets presented in **Figure 5** depicting the punctate pattern of cytoplasmic positivity of LC3B. Scale Bars: 0.5  $\mu\text{m}$ .

## HN13 HNSCC cells



**Figure S2.** Electron micrographs of HN13 HNSCC cell line after nutrient starvation treatment (B), showing an increase of autophagic vacuoles (AV) compared to the control cells (A). Scale Bar: 1  $\mu\text{m}$ .



**Figure S3.** Positive control immunostaining reactions for the markers BECN1 (Beclin-1) and SQSTM1/p62 in paraffin sections of human placenta, and for LC3B in human kidney paraffin sections, validating the specificity of the employed antibodies as suggested by the antibody manufacturers.

**Supplementary Method:** HN13 HNSCC cell line was cultured as previously described [SR1]. Nutrient starvation experiment conducted according to the protocol described by Zhu and colleagues, 2017 [SR2]. Cells were treated for Electron Microscopy analysis according to the procedure that has been described in the 3.3 section of the main text.

### Supplemental Reference

SR1. Younis, R.H.; Han, K.L.; Webb, T.J. Human head and neck squamous cell carcinoma-associated semaphorin 4D induces expansion of myeloid-derived suppressor cells. *J Immunol.* **2016**, *196* (3): 1419- 1429. DOI: 10.4049/jimmunol.1501293.

SR2. Zhu, W.; Qu, H.; Xu, K.; Jia, B.; Li, H.; Du, Y.; Liu, G.; Wei, H-J.; Zhao, H-Y. Differences in the starvation-induced autophagy response in MDA-MB-231 and MCF-7 breast cancer cells. *Animal Cells and Systems*, **2017**, *21*, 190 – 198.