

Supplementary Information

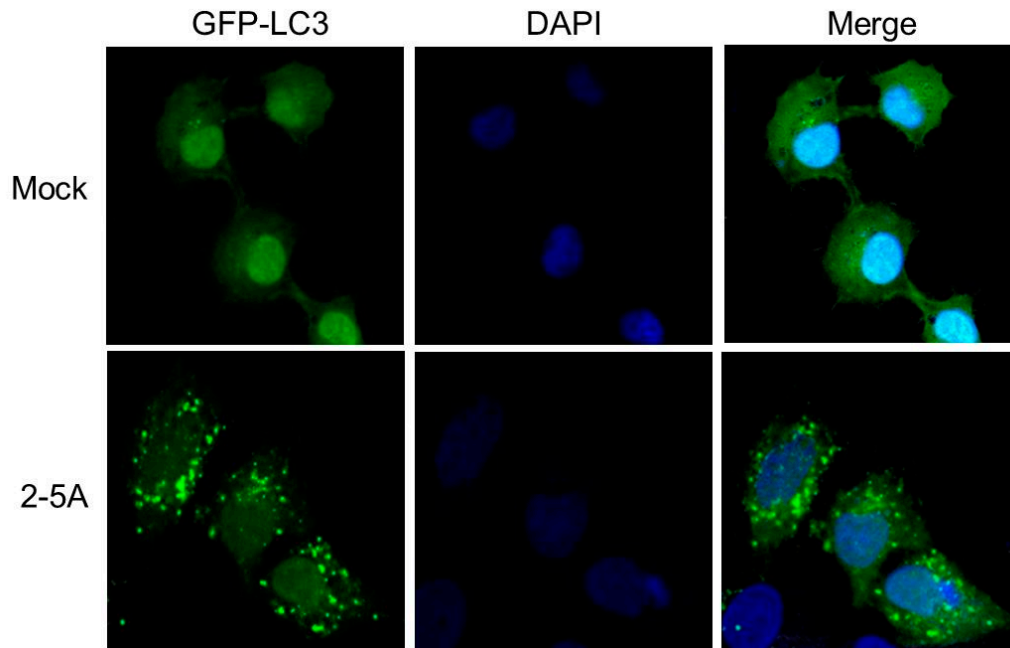


Figure S1. Formation of GFP-LC3 puncta in RNase L activated cells. HT1080 cells expressing GFP-LC3 were transfected with 10 μ M of 2–5A or mock transfected with transfection reagent and representative images of cells taken at 60 \times magnification using confocal microscope are shown. Nuclei were stained with DAPI reagent.

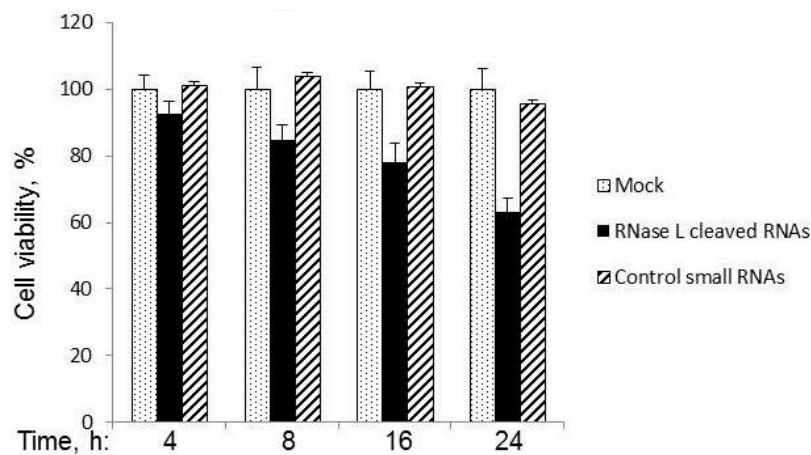


Figure S2. RNase L-cleaved RNAs induce apoptosis in HEK 293 cells which lack TLR expression. HEK293 cells were transfected with 2 μ g/mL of RNase L generated small RNAs or control RNAs (described in methods) for indicated times and cell viability was determined using MTT assay. Results are representative of experiments performed in triplicate \pm SD.