

Supplementary Information

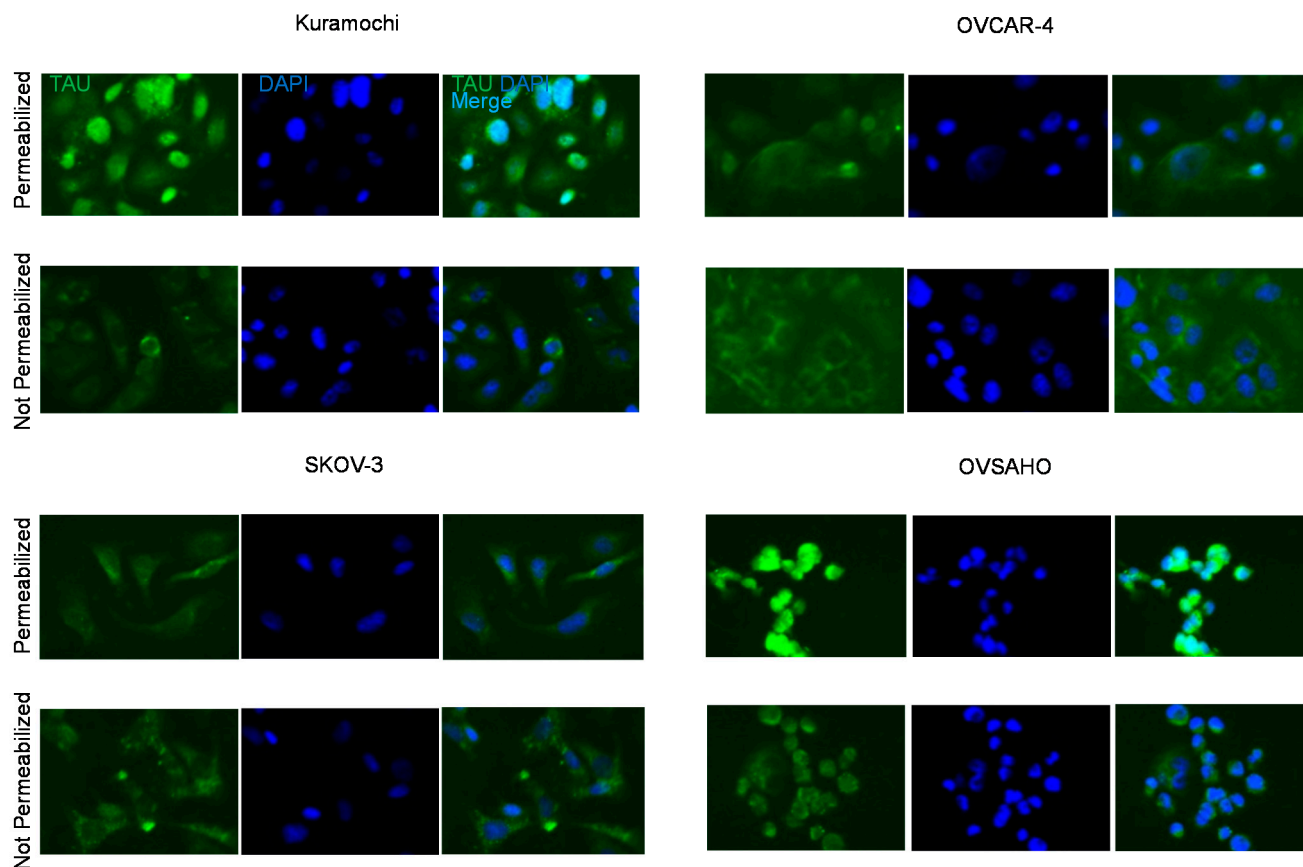


Figure S1. Expression of tau in permeabilized and not permeabilized ovarian carcinoma cell lines Kuramochi, OVCAR-4, SKOV-3, and OVSAHO was visualized using immunofluorescence staining with anti-tau antibodies. Images were generated using a Zeiss fluorescence microscope and 20× objective lens. The fluorescence signal from tau staining (green) was overlaid with DAPI staining (blue) to generate a merged image (light blue).