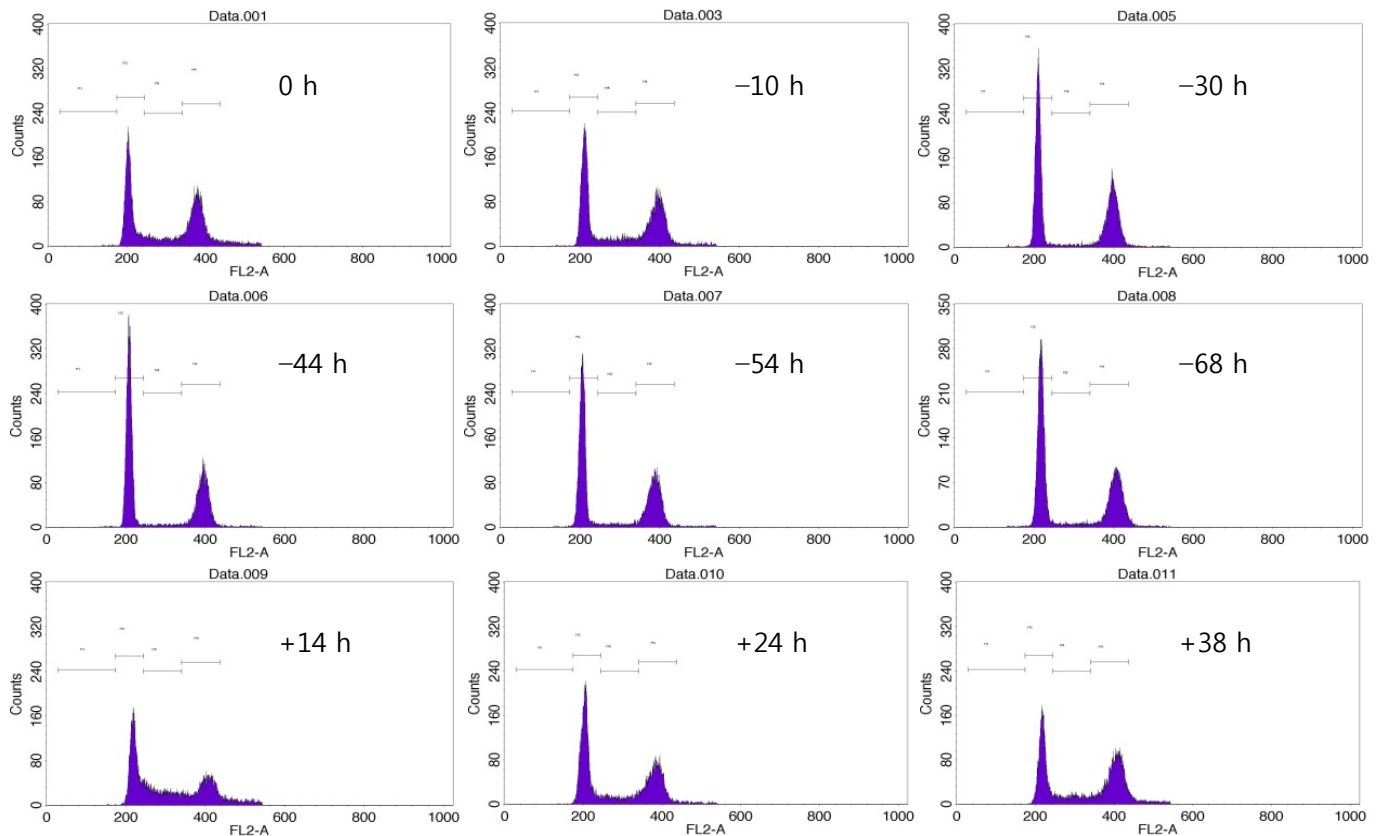
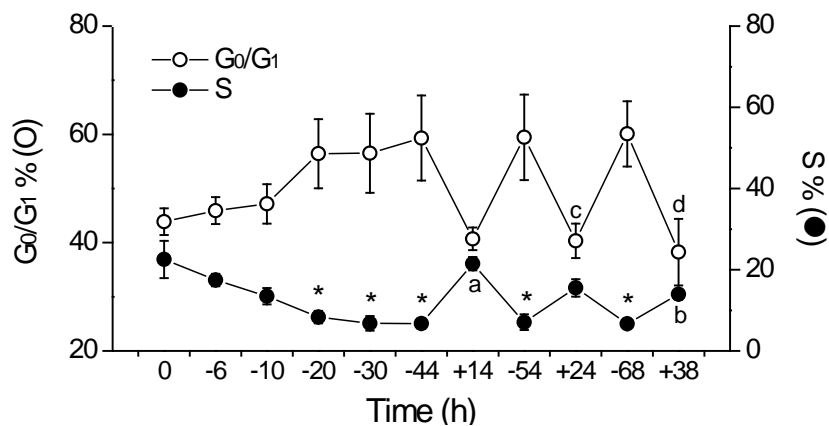


Supplementary Information

Figure S1. CCL-183 cells were arrested in the G₀/G₁ phase and re-entered the S phase following serum deprivation (0% FBS) and re-addition (10% FBS). **(A)** Cell-cycle analysis with propidium iodide was performed using flow cytometry. The representative histograms show cells arrested in the G₀/G₁ phase following serum deprivation (0, -10, -30, -44, -54, and -68 h) and cells that progressed into the S phase following serum re-addition (+14, +24, and +38 h); **(B)** The relative percentage distribution of the G₀/G₁ and S phase was depicted using cells counted from flow cytometry in graphical form. Values are the mean \pm SEM of four independent flow cytometry assays. * $p < 0.05$ vs. 0 h; a, $p < 0.01$ vs. -44 h; b, $p < 0.01$ vs. -68 h; c, $p < 0.05$ vs. -54 h; d, $p < 0.05$ vs. -68 h.



(A)



(B)