

Electronic Supplementary Information (ESI)

Synthesis, Crystal Structures, Genotoxicity, and Antifungal and Antibacterial Studies of Ni(II) and Cd(II) Pyrazole Amide Coordination Complexes

Amal El Mahdaoui,¹ Smaail Radi,^{1*} Youssef Draoui,¹ Mohamed El Massaoudi,¹ Sabir Ouahhoud,^{2,3} Abdeslam Asehraou,² Nour eddine Bentouhami,² Ennouamane Saalaoui,² Redouane Benabbes,² Koen Robeyns,⁴ Yann Garcia,^{4*}

¹ LCAE, Department of Chemistry, Faculty of Sciences, University Mohammed I, Oujda 60 000, Morocco. E-mail: s.radi@ump.ac.ma

² Laboratory of Bioresource Biotechnology Ethnopharmacology and Health Faculty of Sciences, University Mohammed I, Oujda 60 000, Morocco. a.asehraou@ump.ac.ma

³ Faculty of Medicine and Pharmacy, University Sultan Moulay Slimane, Beni Mellal, 23000, Morocco.

⁴ Institute of Condensed Matter and Nanosciences, Molecular Chemistry, Materials and Catalysis (IMCN/MOST), Université catholique de Louvain, Place Louis Pasteur 1, 1348 Louvain-la-Neuve, Belgium. E-mail: yann.garcia@uclouvain.be

Contents:

- **Figure S1.** ¹H NMR spectrum of **L₁**
- **Figure S2.** ¹³C NMR spectrum of **L₁**
- **Figure S3.** ¹H NMR spectrum of **L₂**
- **Figure S4.** ¹³C NMR spectrum of **L₂**
- **Figure S5.** Mass spectroscopy analysis of **L₁**
- **Figure S6.** Mass spectroscopy analysis of **L₂**
- **Figure S7.** Mass spectroscopy analysis of **C₁**
- **Figure S8.** Mass spectroscopy analysis of **C₂**

Figure S1. ^1H NMR spectrum of **L**₁

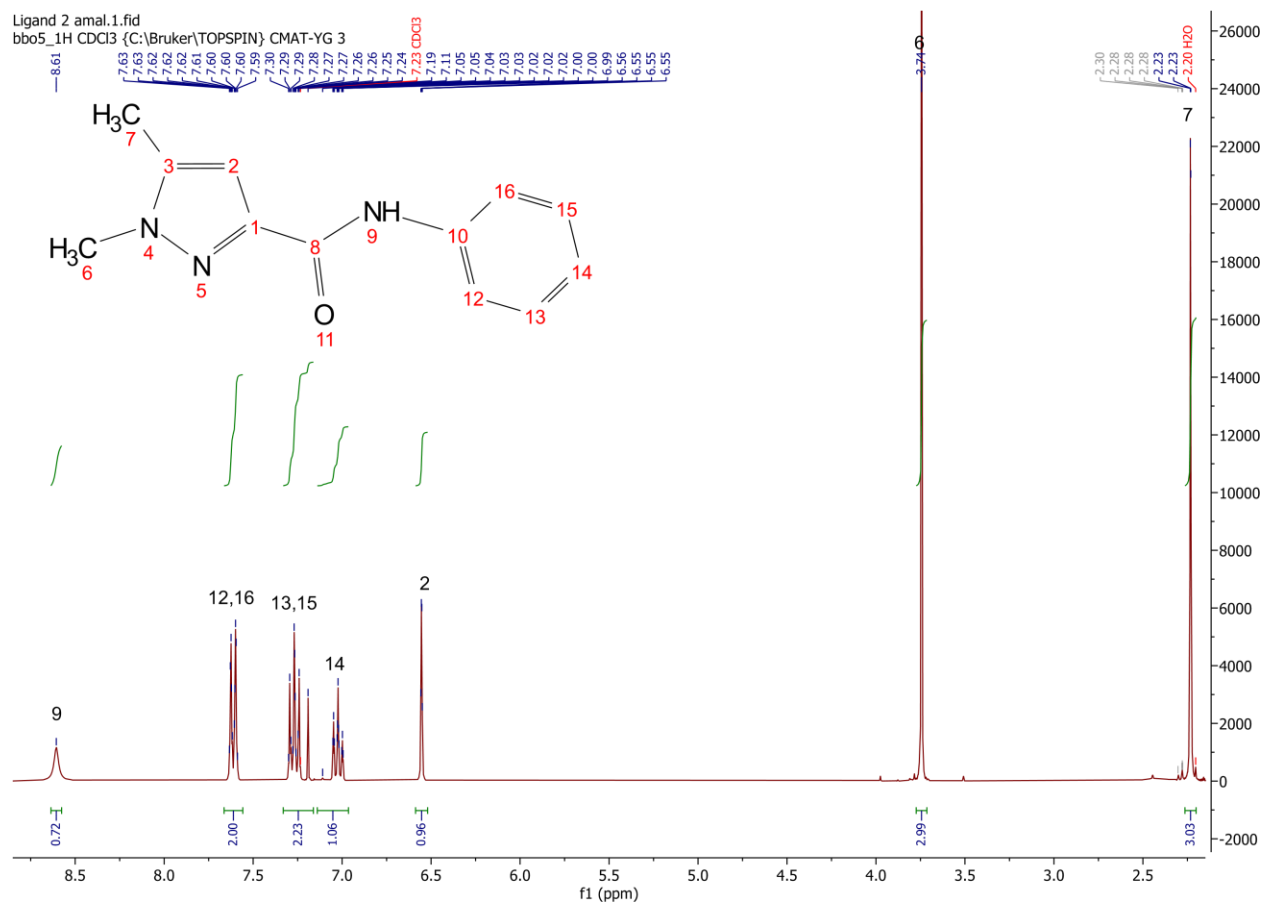


Figure S2. ^{13}C NMR spectrum of **L**₁

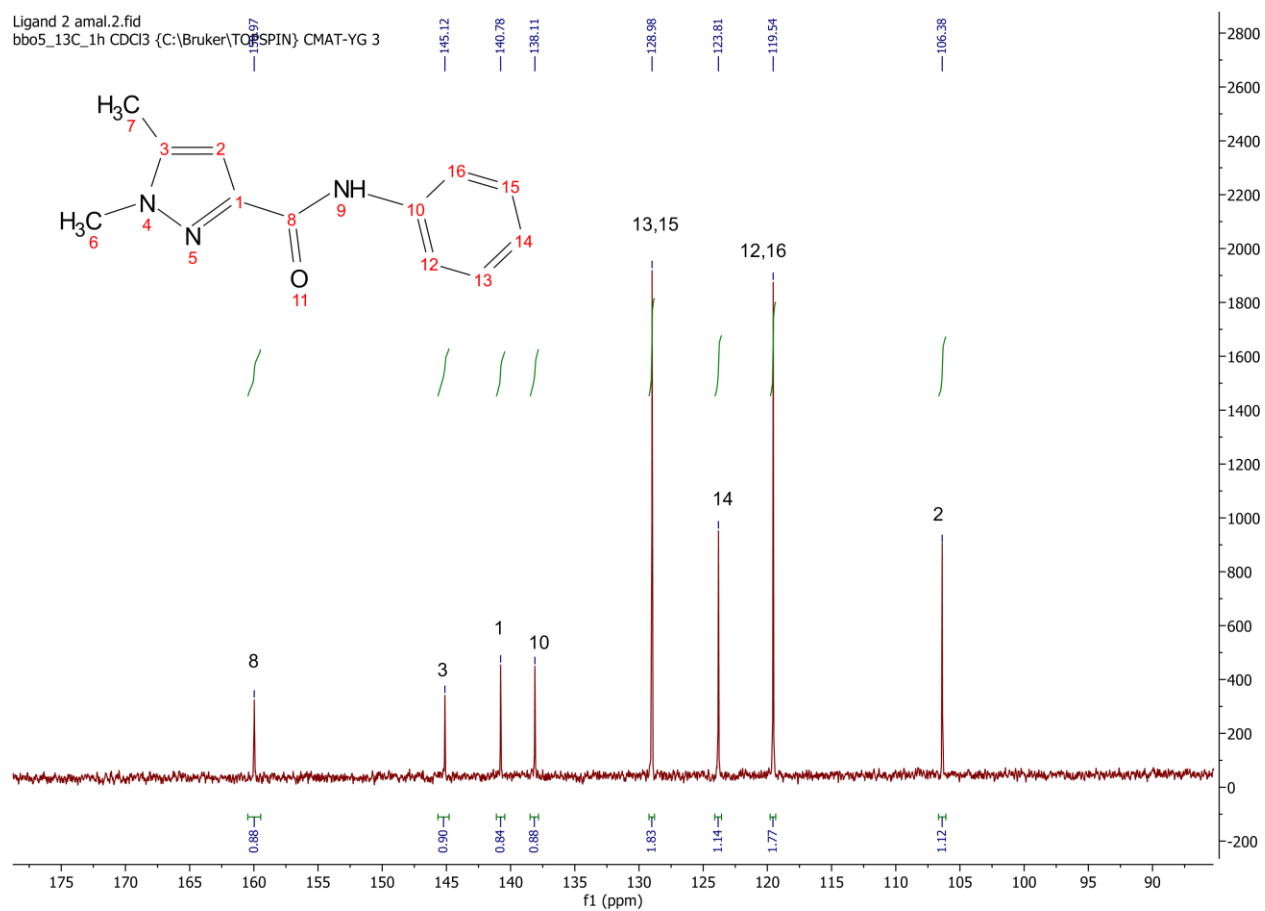


Figure S3. ^1H NMR spectrum of **L**₂

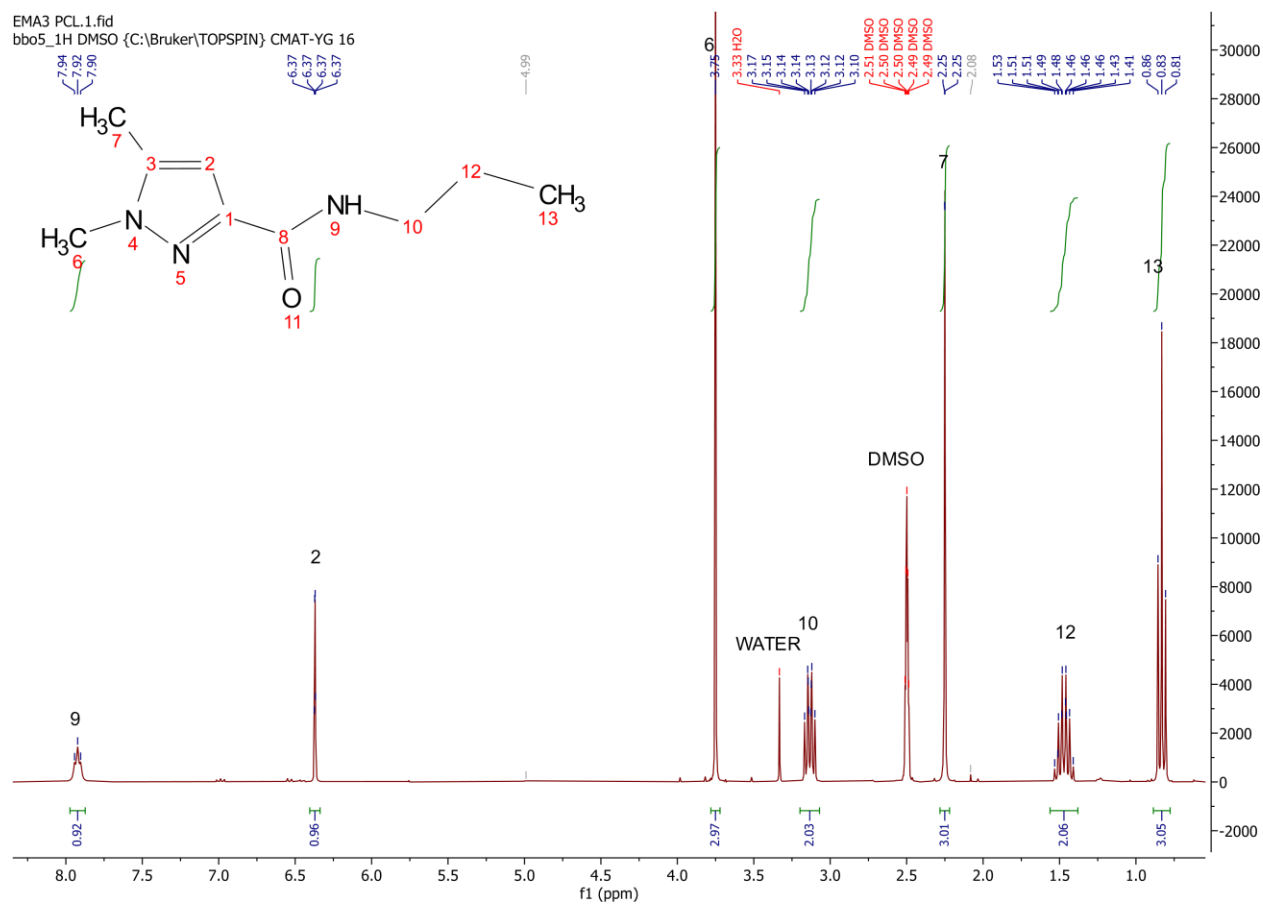


Figure S4. ^{13}C NMR spectrum of **L2**

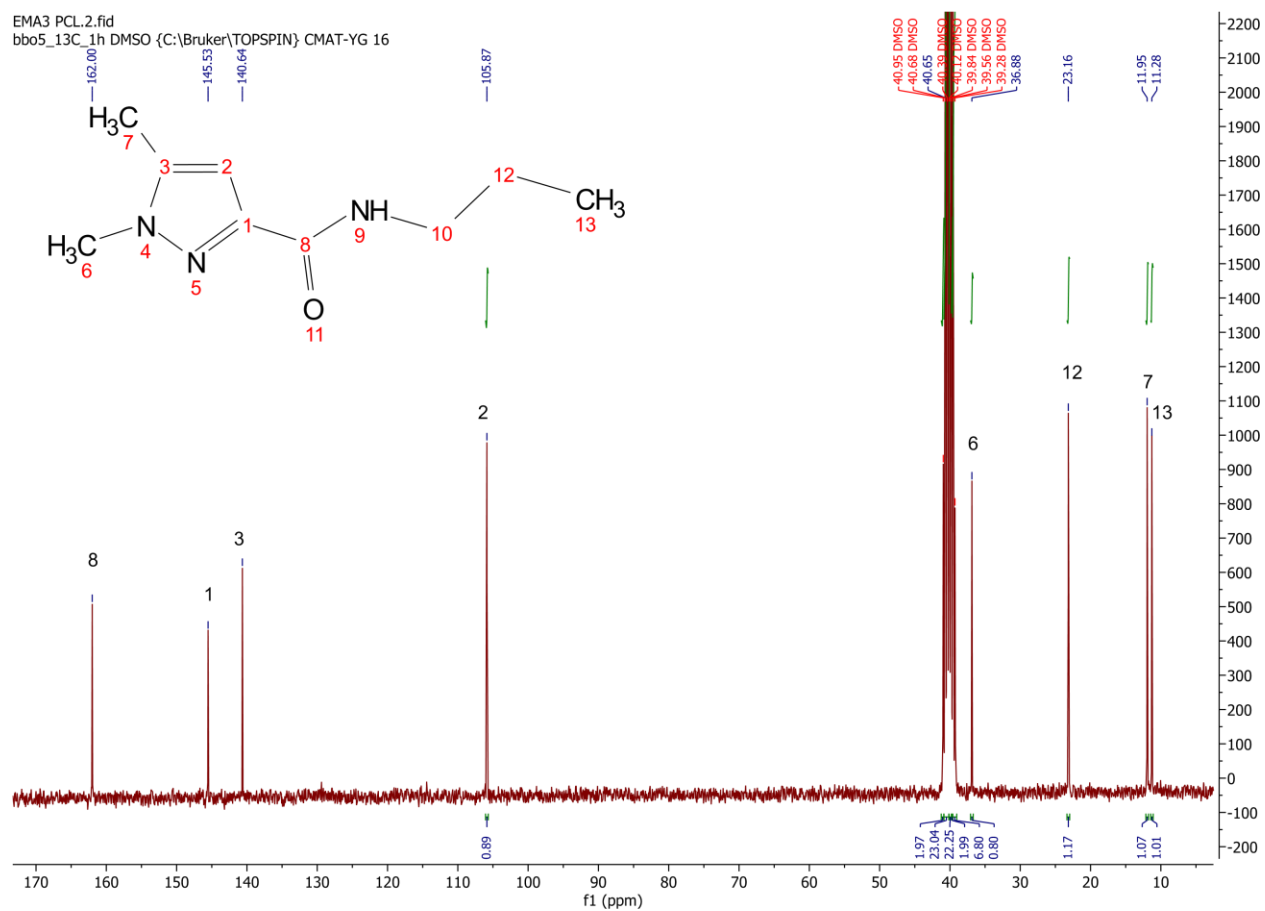


Figure S5. Mass spectroscopy analysis of L₁

GN-L2 #132-212 RT: 1.87-3.01 AV: 81 NL: 1.77E4
T: ITMS + c ESI Full ms [100.00-1500.00]

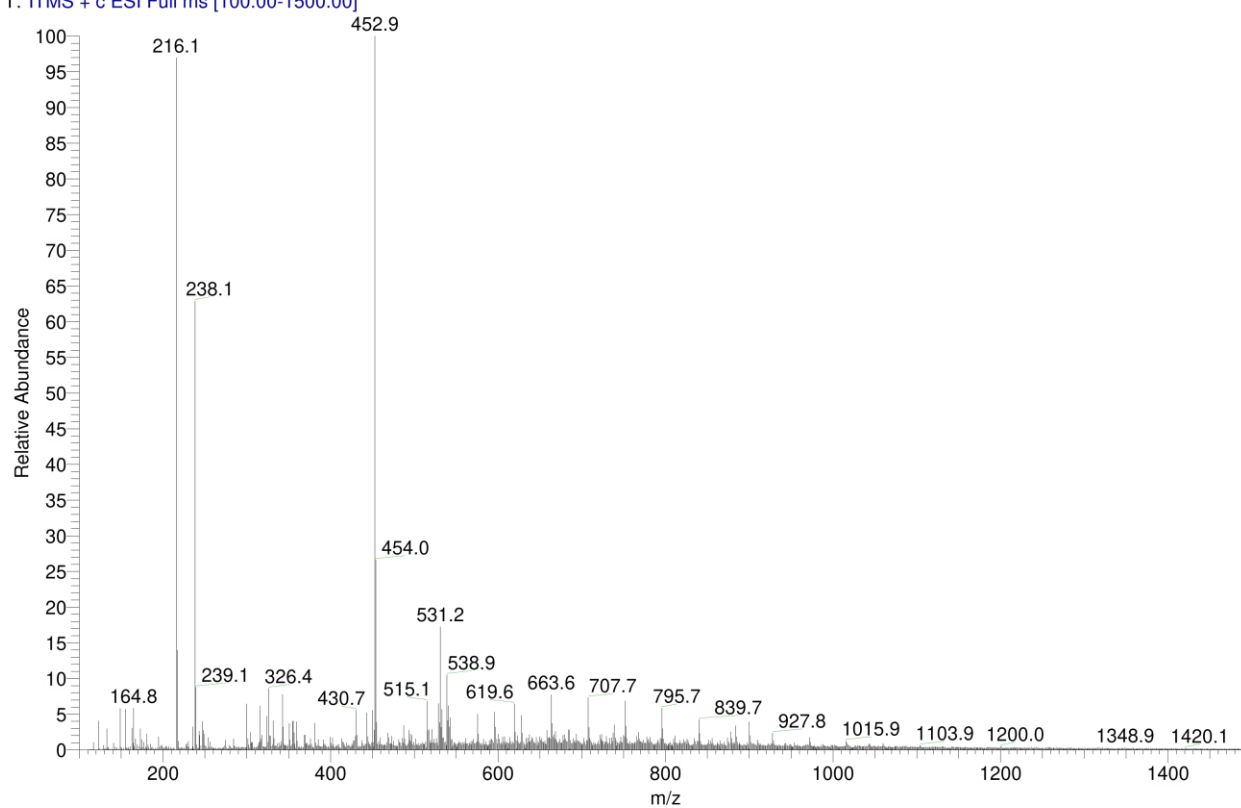


Figure S6. Mass spectroscopy analysis of **L₂**

GN-L3 #136-211 RT: 1.93-3.00 AV: 76 NL: 6.77E4
T: ITMS + c ESI Full ms [100.00-1500.00]

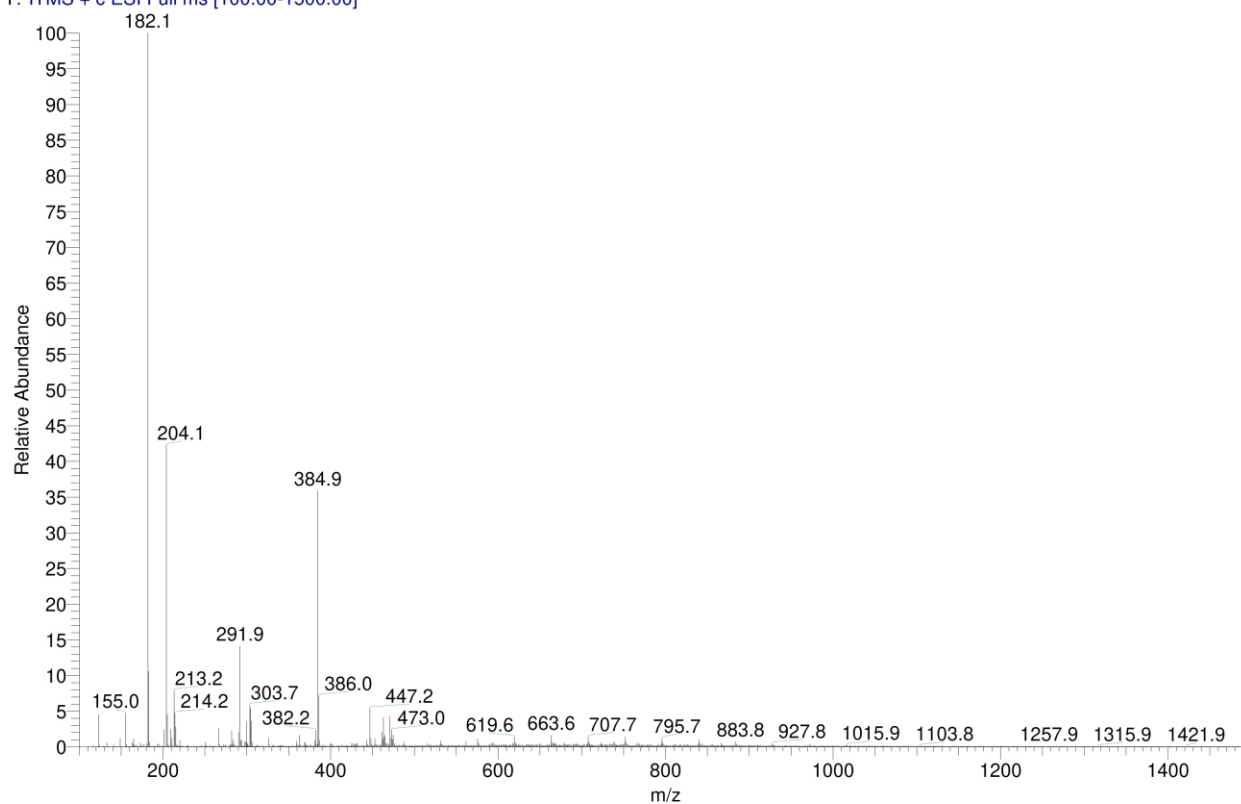
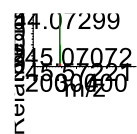
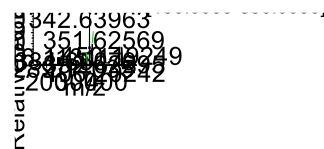
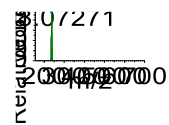
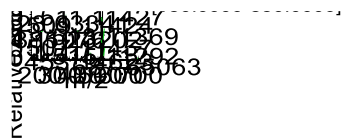


Figure S7. Mass spectroscopy analysis of **C₁**



Peak Mass	Display Formula	MS Cov. [%]	Delta [ppm]	Theo. mass
244.07280	C ₂₄ H ₂₆ O ₂ Ni ⁵⁶ Ni	72.20	-0.78	244.07299

Figure S8. Mass spectroscopy analysis of **C₂**



Peak Mass	Display Formula	MS Cov. [%]	Delta [ppm]	Theo. mass
234.07423	C ₁₈ H ₃₀ O ₂ N ₆ ¹⁰⁸ Cd		99.24 0.16	234.07419