

Designing Antimicrobial Peptides Based on α -Conotoxin RgIA

Minghe Wang ¹, Zhouyuji Liao ¹, Dongting Zhangsun ^{1,2}, Yong Wu ^{1,*} and Sulan Luo ^{1,2,*}

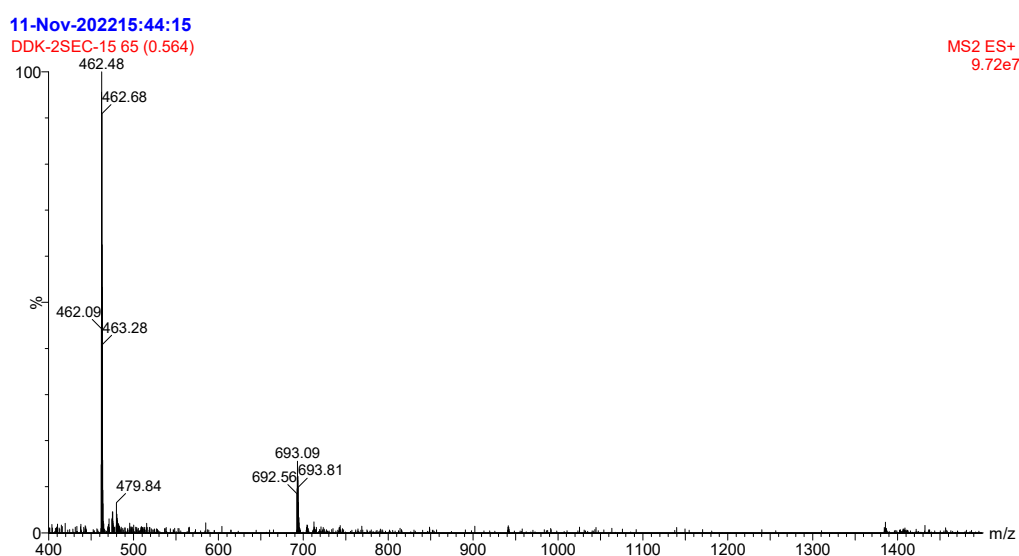
¹ School of Medicine, Guangxi University, Nanning 530004, China; 13793337608@163.com (M.W.); 15170245109@163.com (Z.L.); zhangsundt@163.com (D.Z.)

² Key Laboratory of Tropical Biological Resources of Ministry of Education, Hainan University, Haikou 570228, China

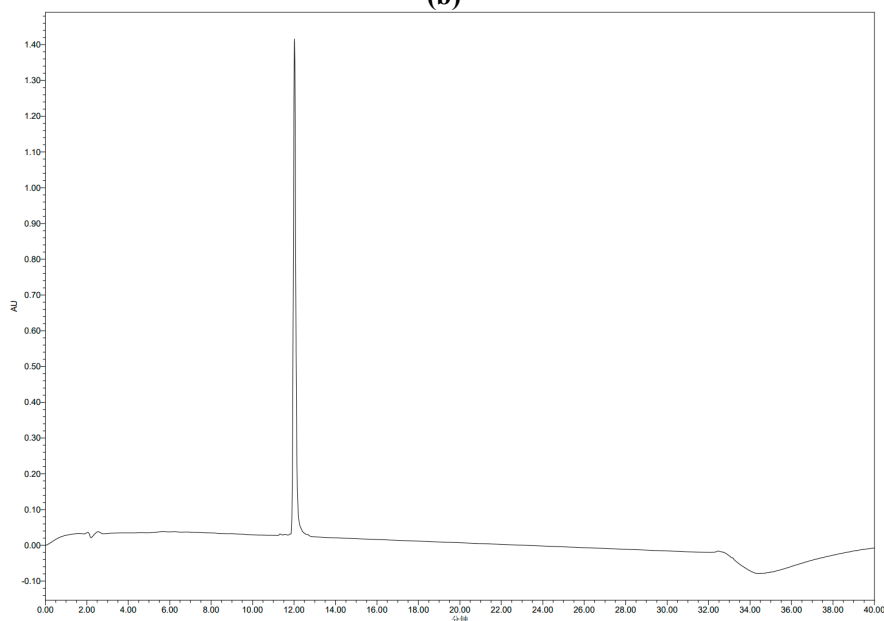
* Correspondence: wuyong@gxu.edu.cn (Y.W.); sulan2021@gxu.edu.cn (S.L.)

LC-MS and HPLC analysis of peptides.

(a)



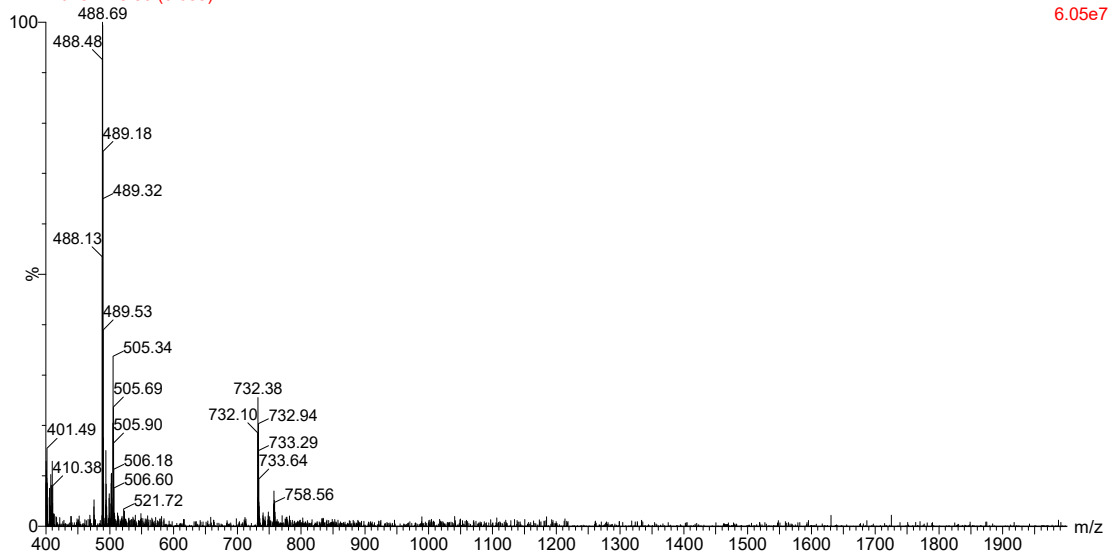
(b)



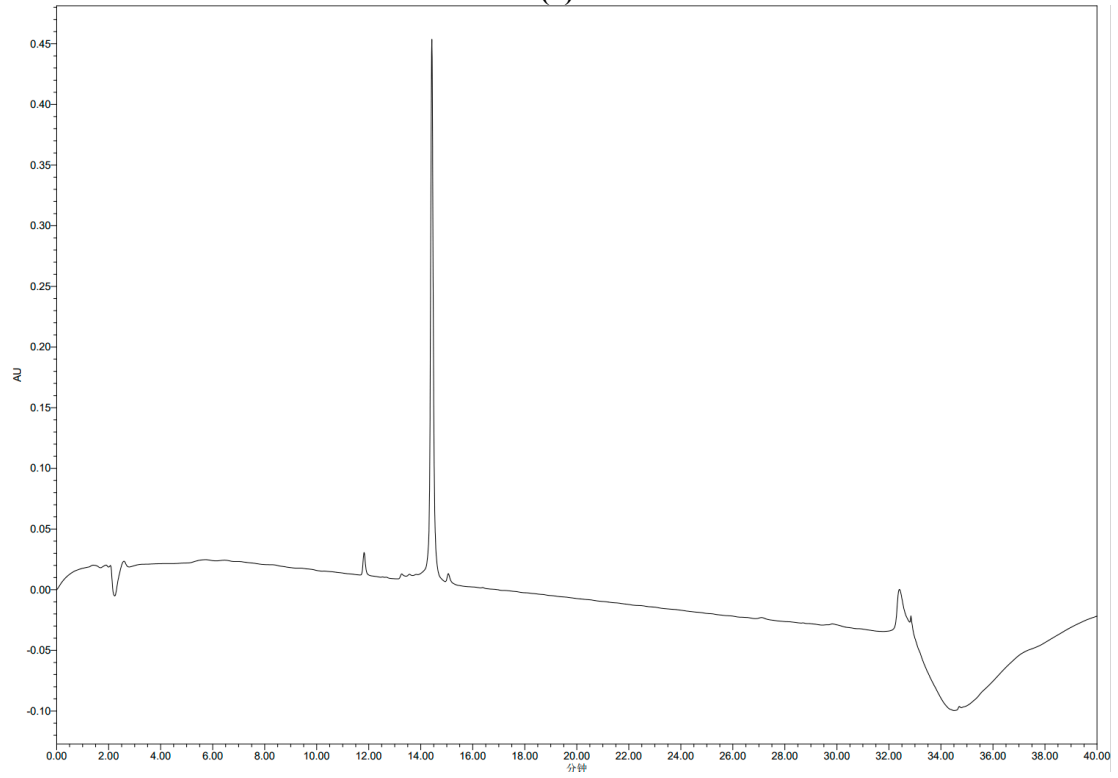
(c)

18-Dec-2023 19:41:00
PEP220231218 50 (0.685)

Scan ES+
6.05e7



(d)

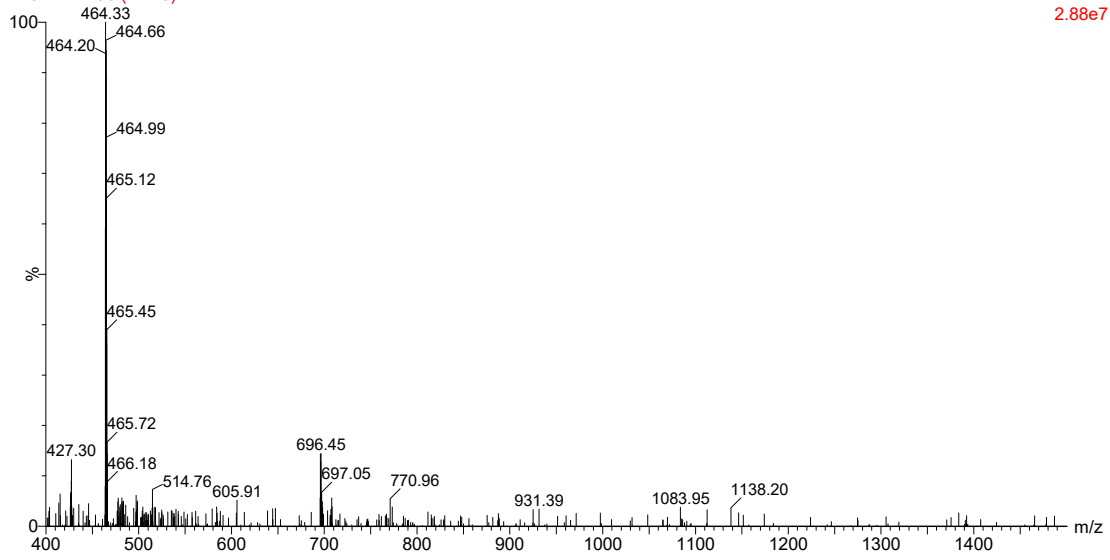


(e)

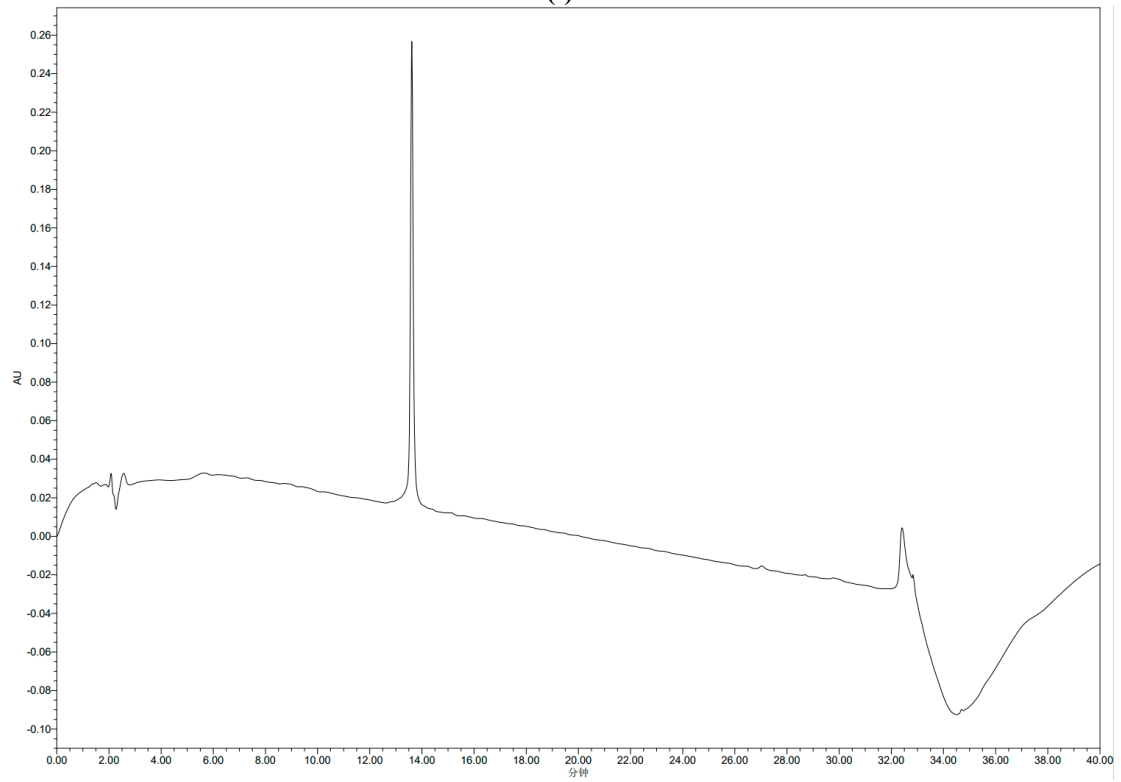
21-Sep-2022 14:52:31

DK5 sec4 198 (1.718)

MS2 ES+
2.88e7



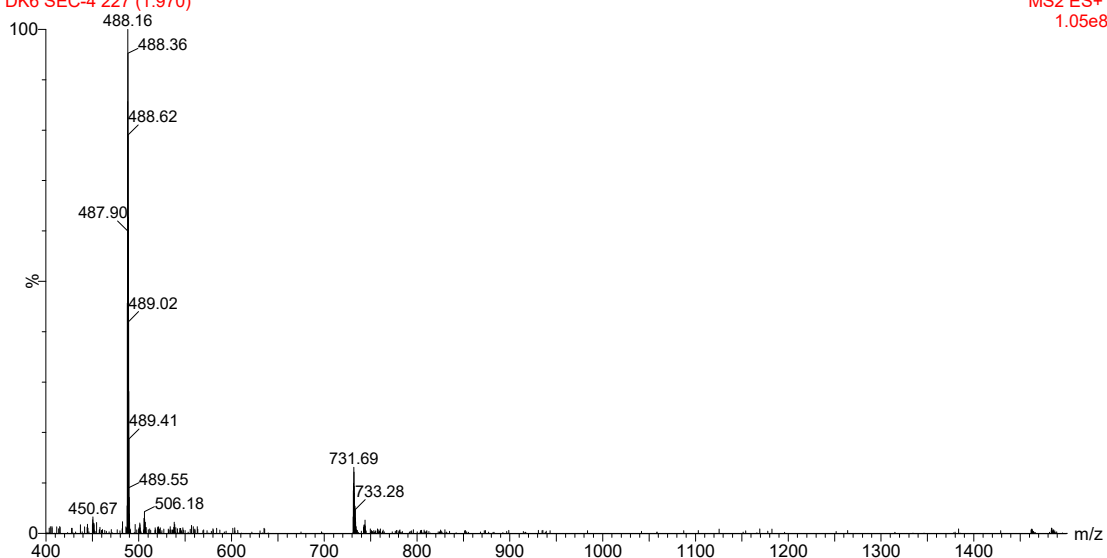
(f)



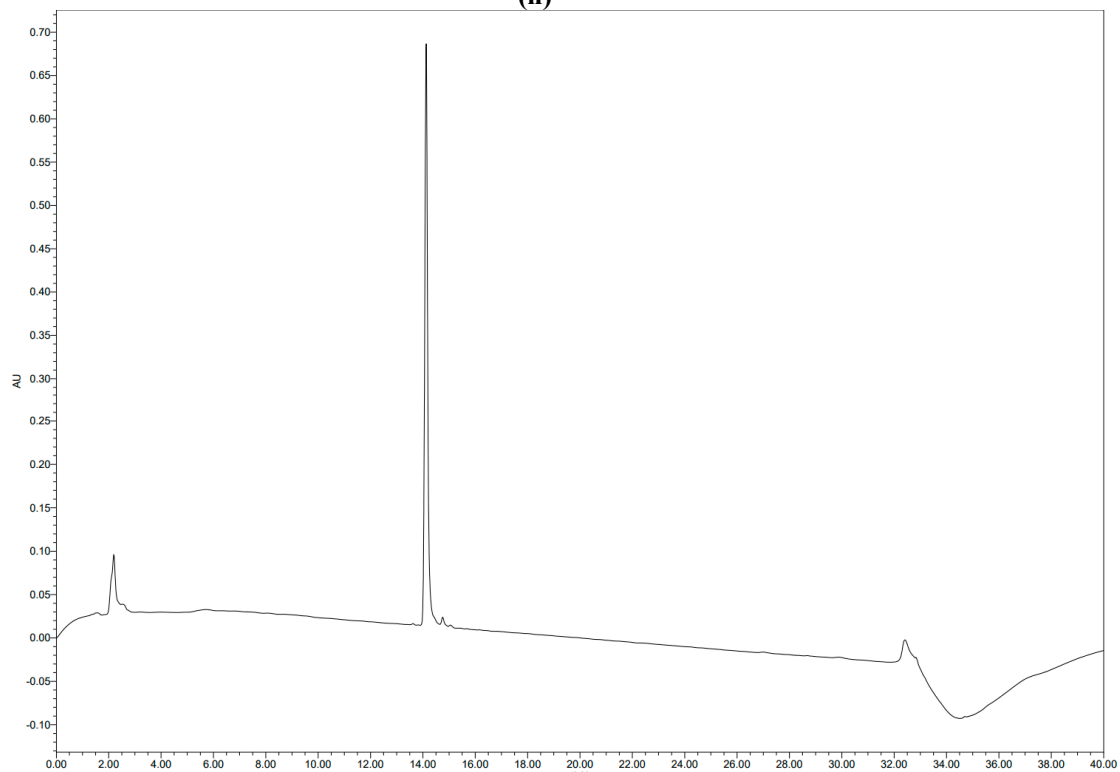
(g)

22-Sep-2022 11:33:32
DK6 SEC-4 227 (1.970)

MS2 ES+
1.05e8



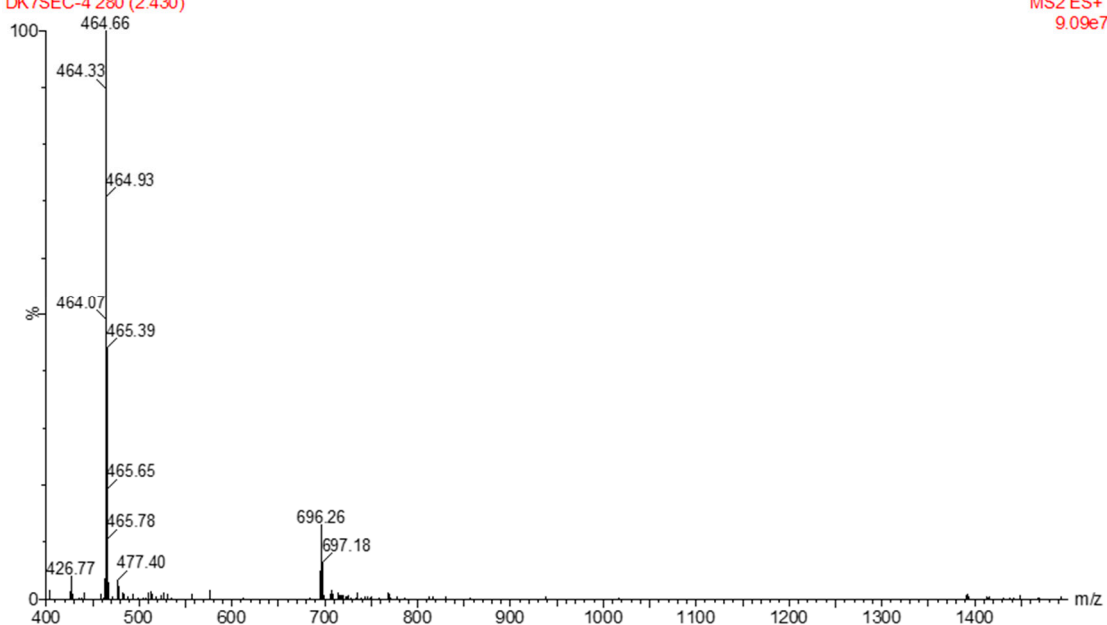
(h)



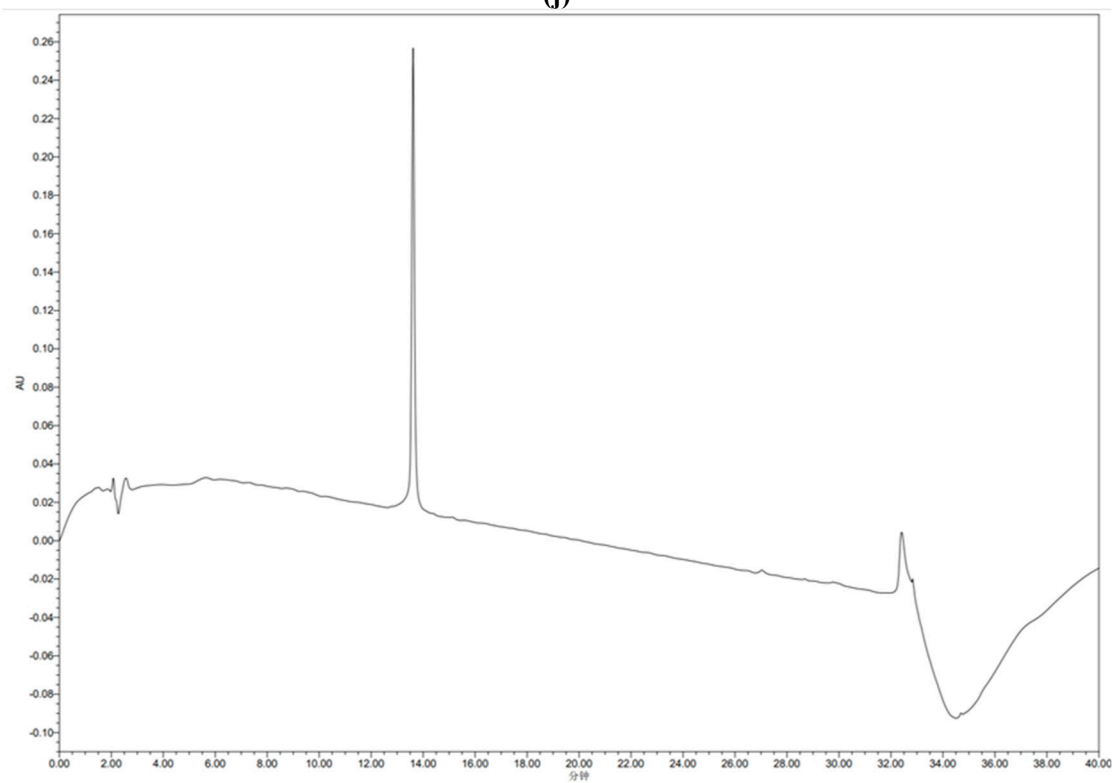
(i)

30-Mar-2023 22:19:23
DK7SEC-4 280 (2.430)

MS2 ES+
9.09e7



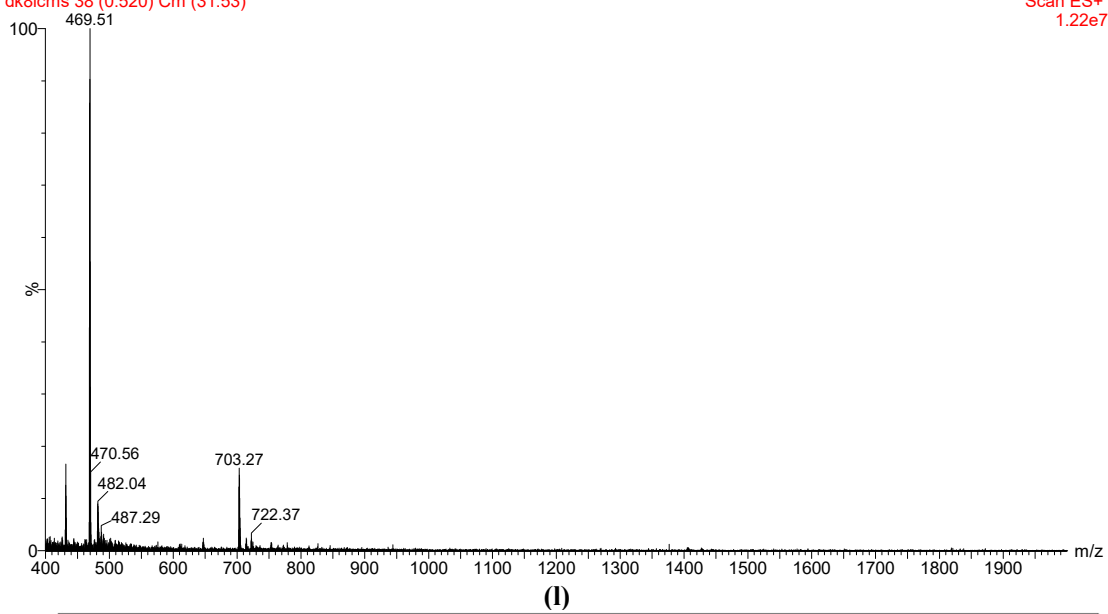
(j)



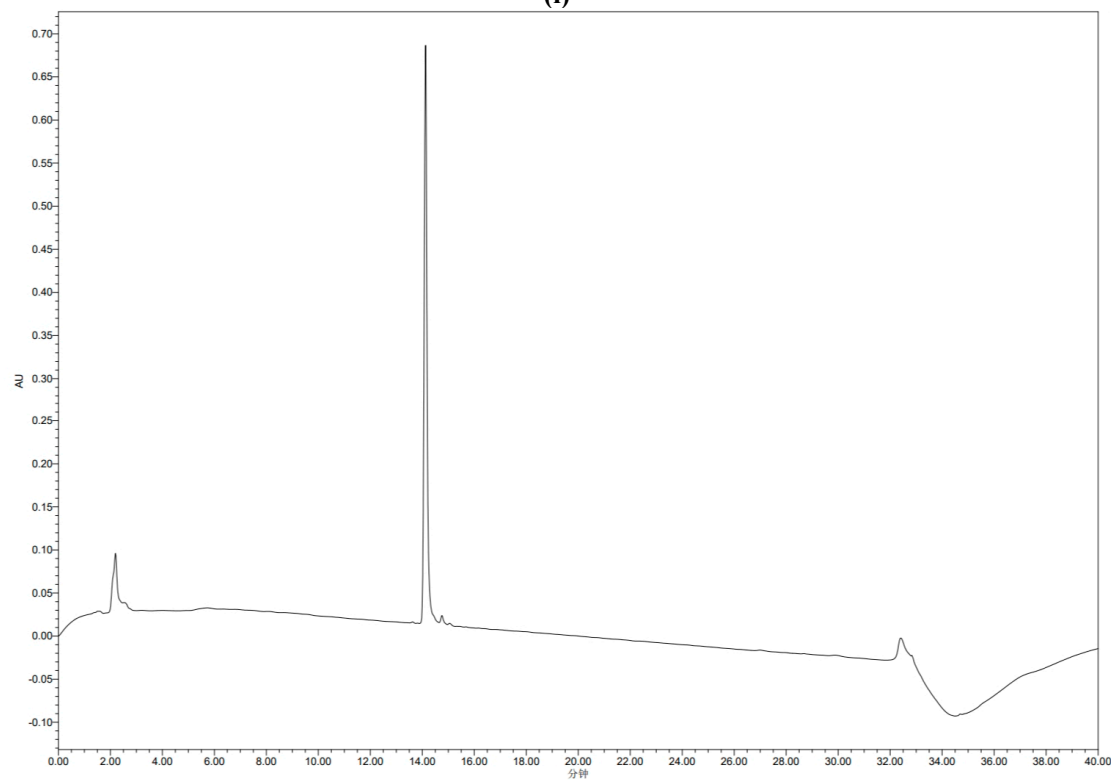
(k)

TX18-May-2023 15:58:54
dk8lcms 38 (0.520) Cm (31:53)

Scan ES+
1.22e7



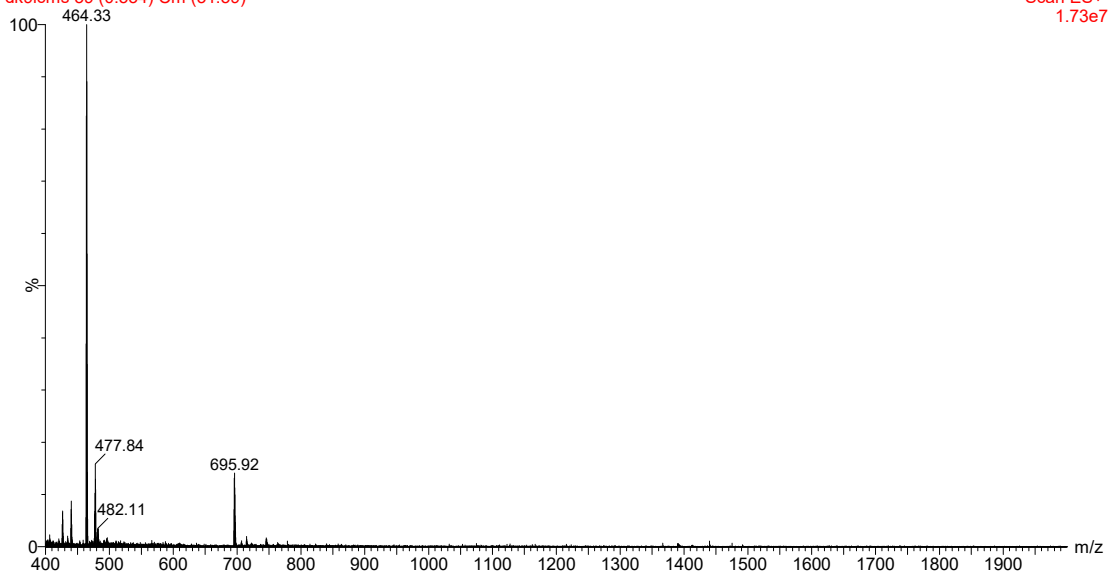
(l)



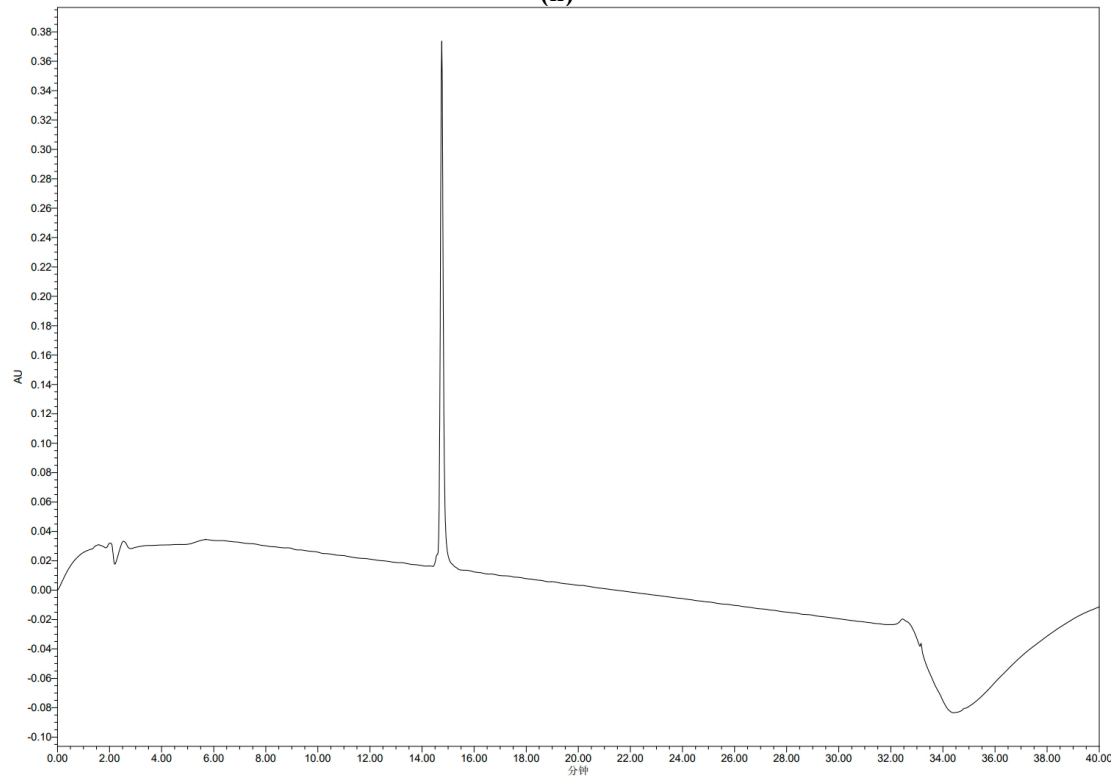
(m)

TX18-May-2023 16:06:44
dk9lcms 39 (0.534) Cm (31:59)

Scan ES+
1.73e7



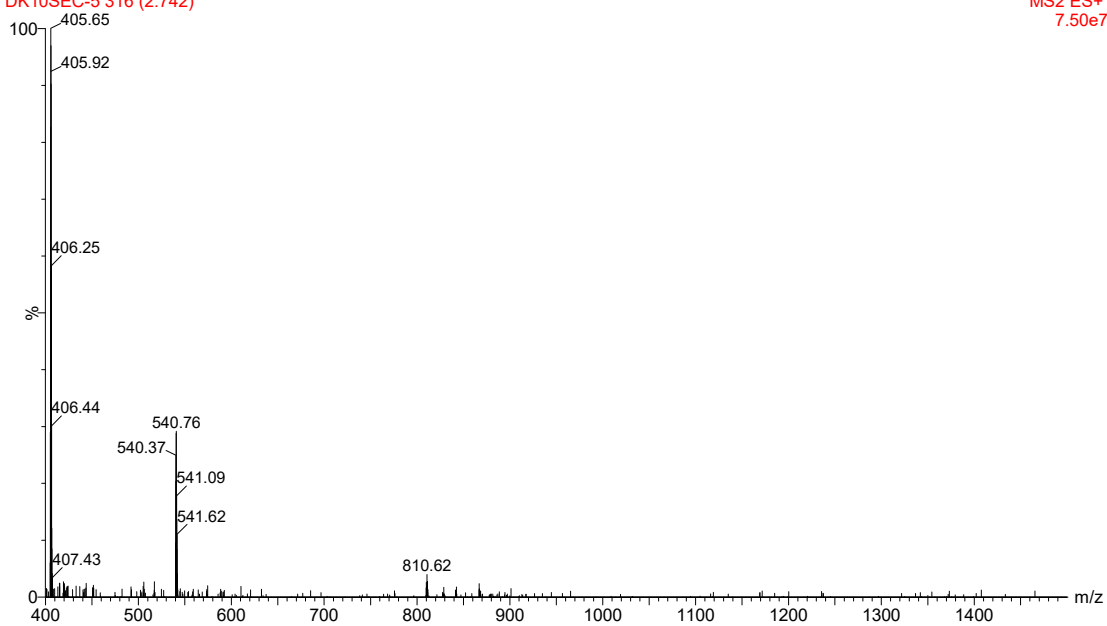
(n)



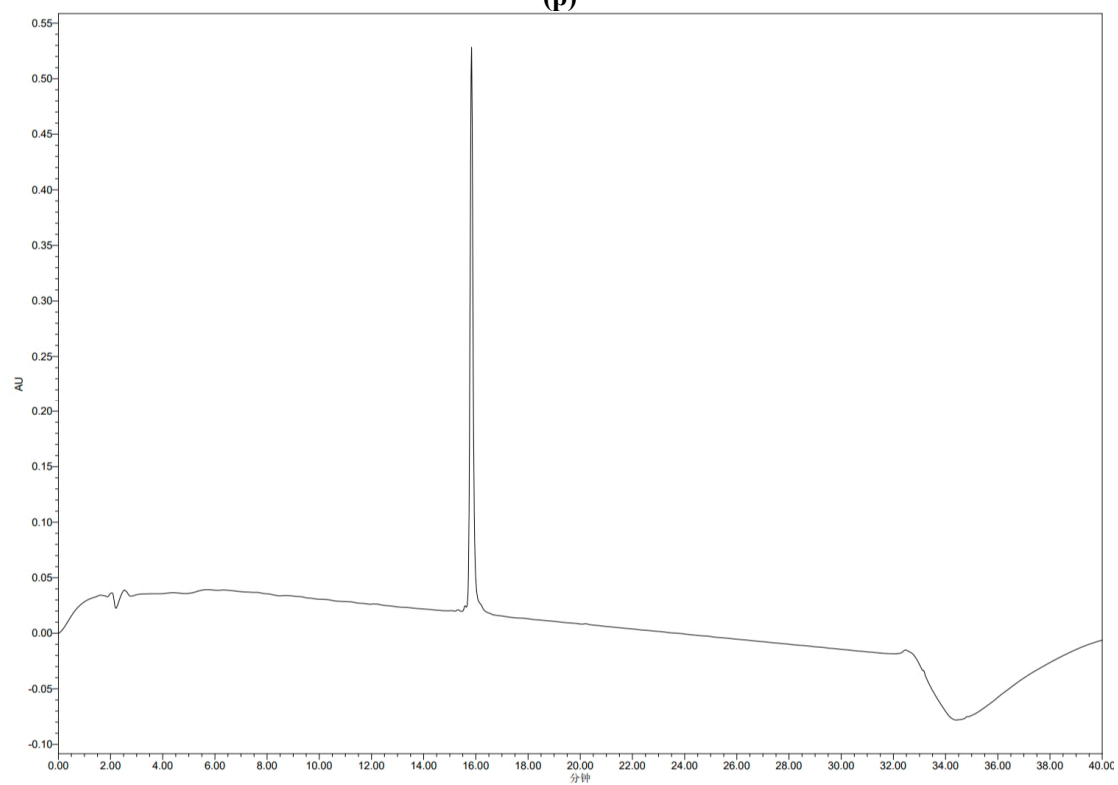
(o)

18-Mar-2023 16:32:12
DK10SEC-5 316 (2.742)

MS2 ES+
7.50e7



(p)



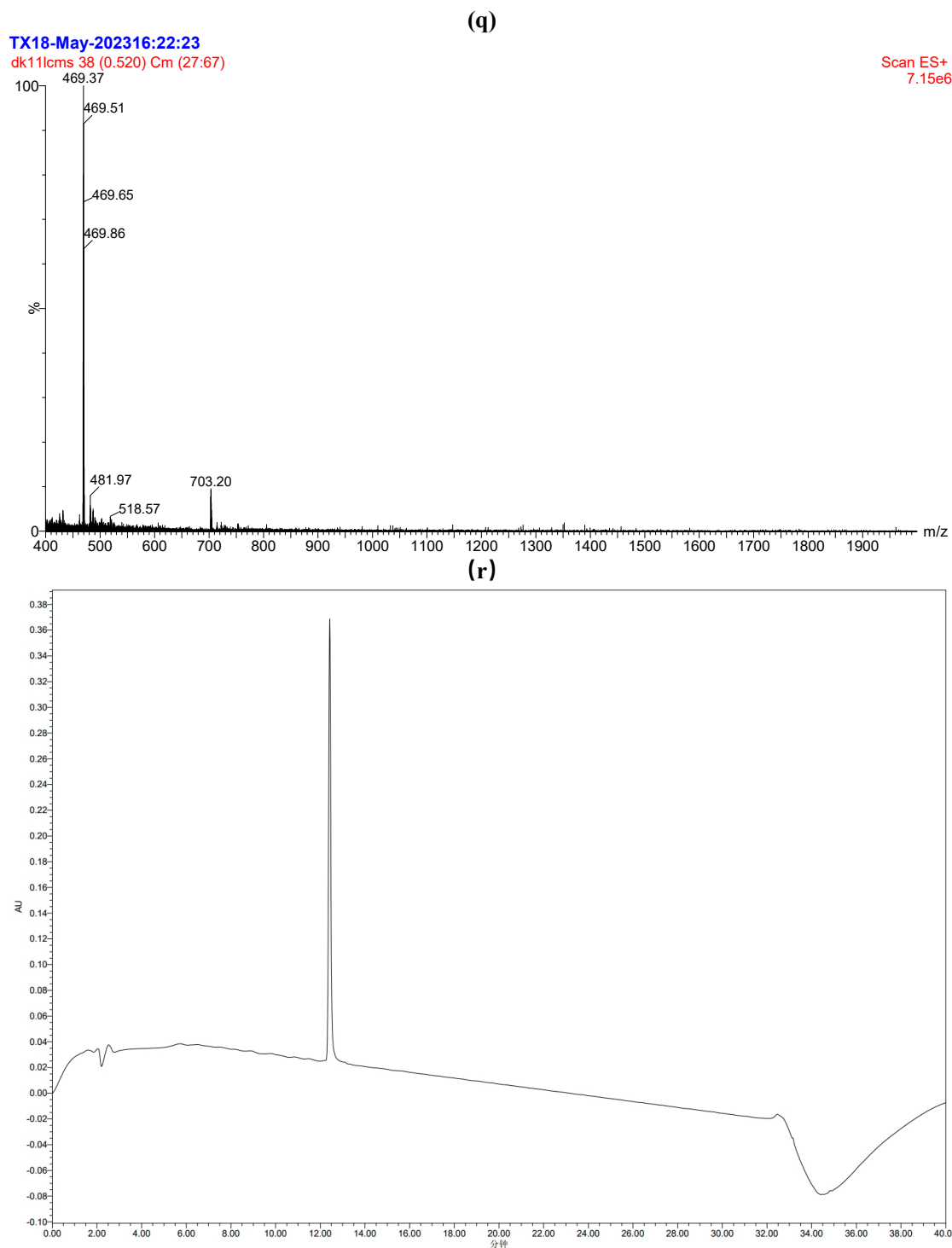


Figure S1. (a) LC-MS analysis of Pep 1. (b) HPLC analysis of the Pep 1. (c) LC-MS analysis of Pep 2. (d) HPLC analysis of the Pep 2. (e) LC-MS analysis of Pep 3. (f) HPLC analysis of the Pep 3. (g) LC-MS analysis of Pep 4. (h) HPLC analysis of the Pep 4. (i) LC-MS analysis of Pep 5. (j) HPLC analysis of the Pep 5. (k) LC-MS analysis of Pep 6. (l) HPLC analysis of the Pep 6. (m) LC-MS analysis of Pep 7. (n) HPLC analysis of the Pep 7. (o) LC-MS analysis of Pep 8. (p) HPLC analysis of the Pep 8. (q) LC-MS analysis of Pep 9. (r) HPLC analysis of the Pep 9.