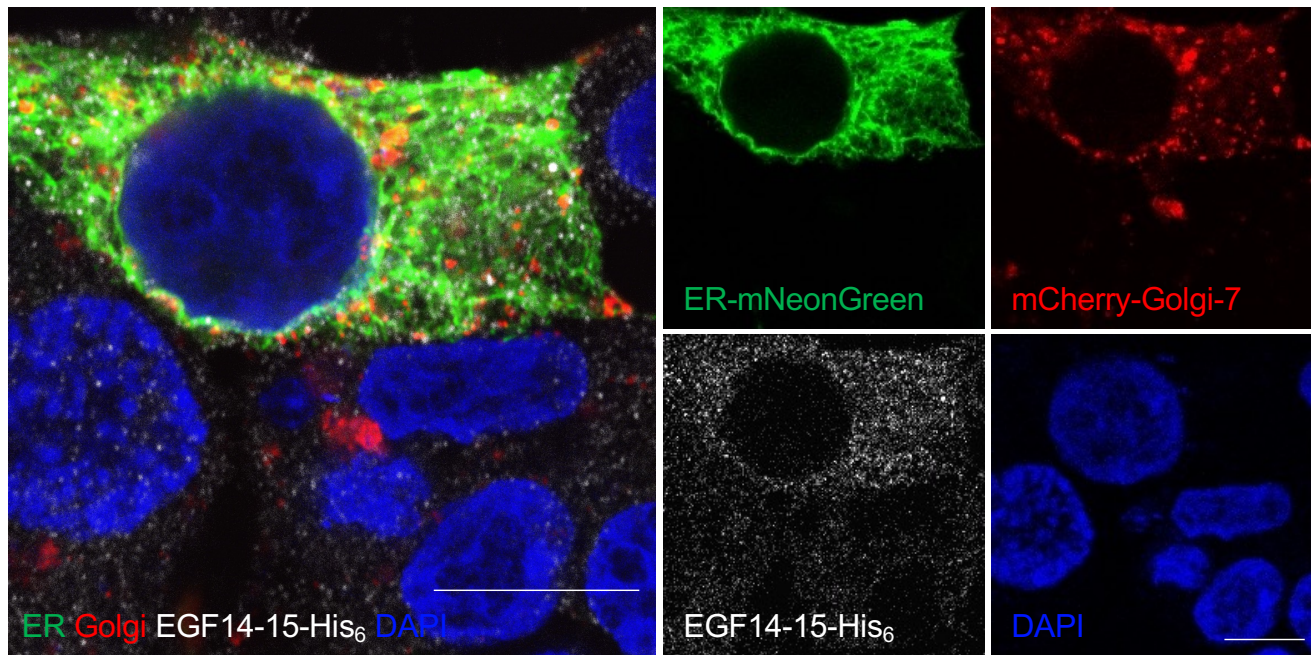


**Supplementary Figure S1. EGF14-15-(G<sub>3</sub>S)<sub>2</sub>-His<sub>6</sub> forms aggregates based on different experimental evidence.** A. Proteins in cell lysates from HEK293T cells transiently transfected with EGF14-15-(G<sub>3</sub>S)<sub>2</sub>-His<sub>6</sub> were analyzed in non-reducing denatured condition, reducing denatured condition, or native condition. The separated proteins were immunoblotted with anti-His antibody. B. HEK293T cells transiently transfected with EGF14-15-(G<sub>3</sub>S)<sub>2</sub>-His<sub>6</sub> were analyzed for aggresome formation by flow cytometry.



**Supplementary Figure S2. EGF14-15-(G<sub>3</sub>S)<sub>2</sub>-His<sub>6</sub> partially colocalized with ER markers.** HEK293T cells transiently transfected with ER-mNeonGreen, mCherry-Golgi-7 and EGF14-15-(G<sub>3</sub>S)<sub>2</sub>-His<sub>6</sub> were immunolabelled with anti-His antibody. Stained cells were imaged by confocal microscopy using a 100X/1.40 oil immersion objective. Bar, 5 μm.