

Supplementary Materials

Schiff Base Compounds as Fluorescent Probes for the Highly Sensitive and Selective Detection of Al³⁺ Ions

Yanling Pang ¹, Desu Meng ¹, Jian Liu ^{2,*}, Shengxia Duan ^{1,*}, Jingru Fan ¹, Longyu Gao ¹
and Xinshu Long ¹

¹ Department of Chemistry and Engineering, Heze University, Heze 274500, China

² College of Agriculture and Bioengineering, Heze University, Heze 274000, China

* Correspondence: liujian61@hezeu.edu.cn (J.L.); duanshengxia@hezeu.edu.cn (S.D.)

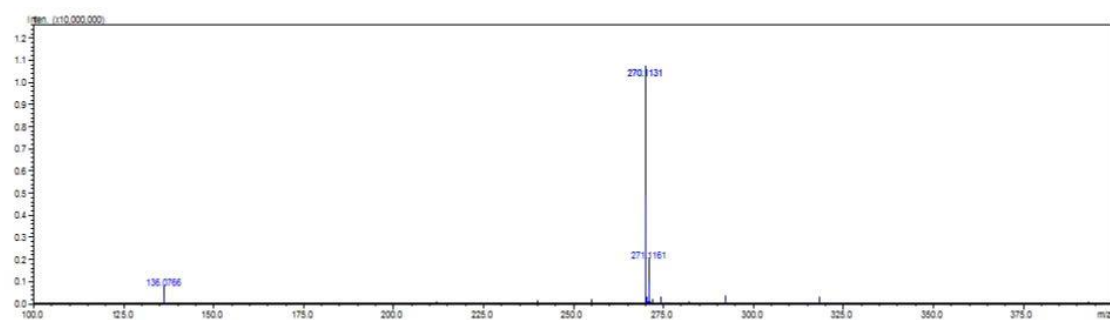


Figure S1 HRMS spectrum of L.

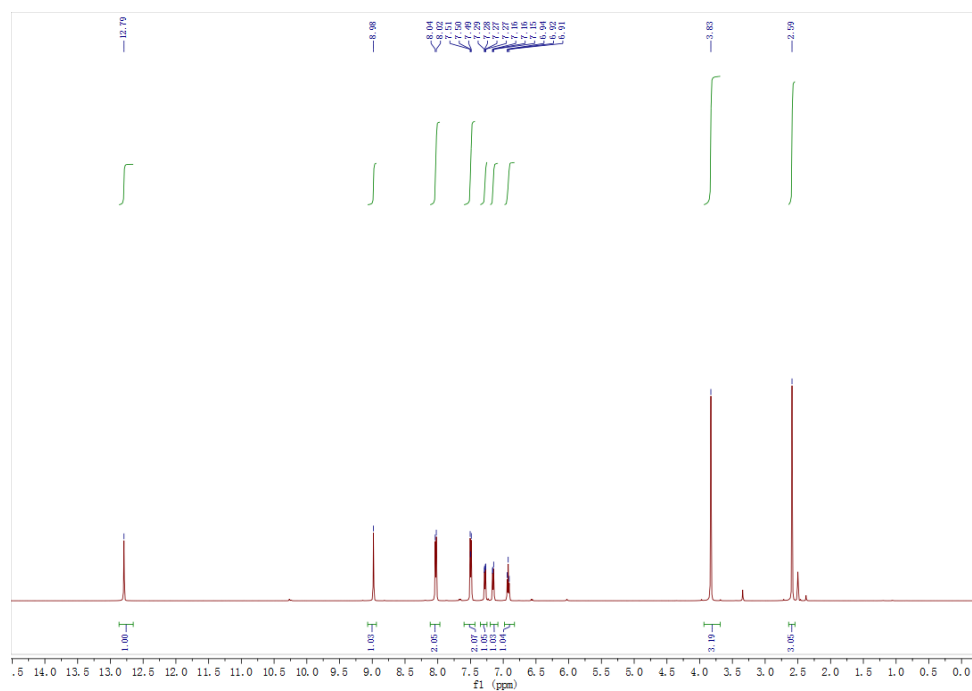


Figure S2 ^1H NMR spectrum of L.

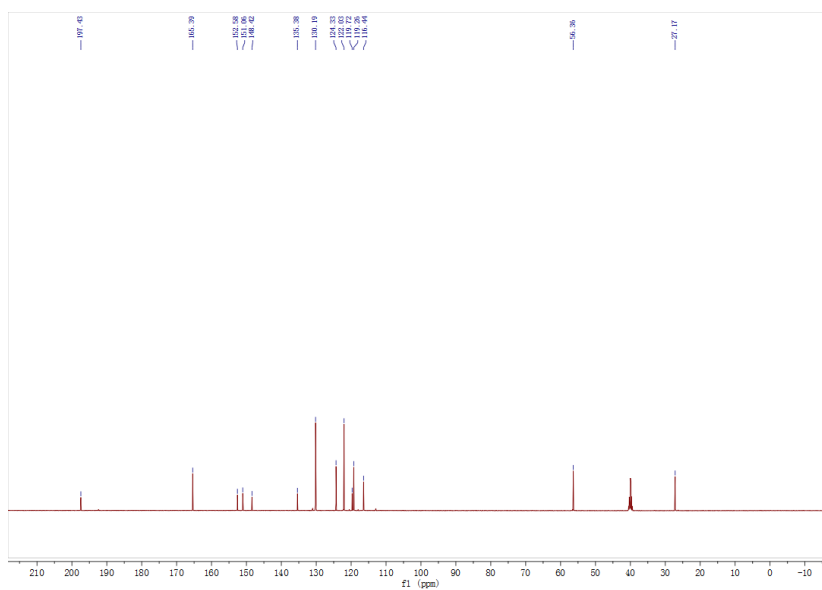


Figure S3 ^{13}C NMR spectrum of L.

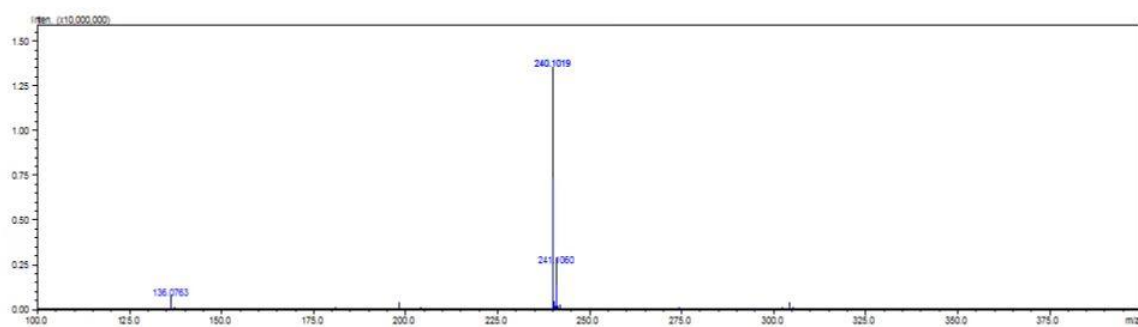


Figure S4 HRMS spectrum of S.

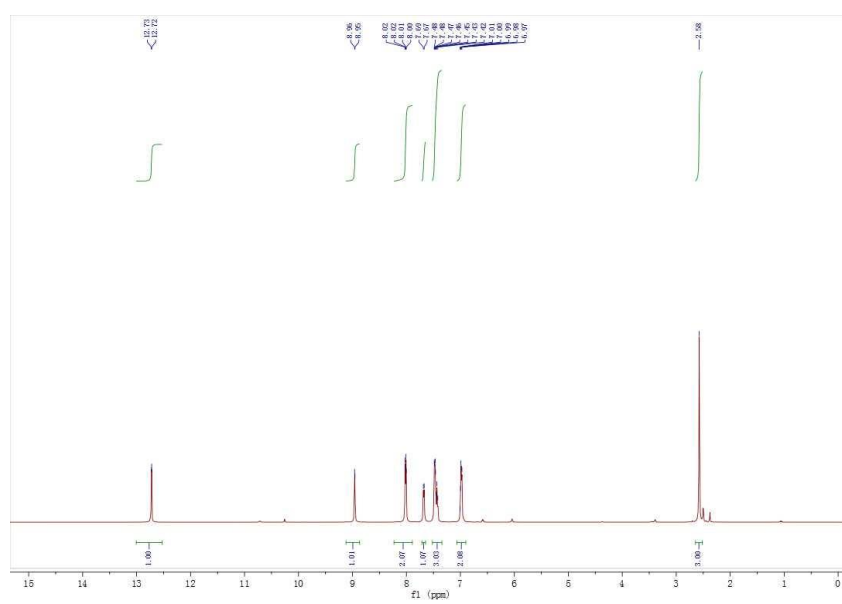


Figure S5 ^1H NMR spectrum of S.

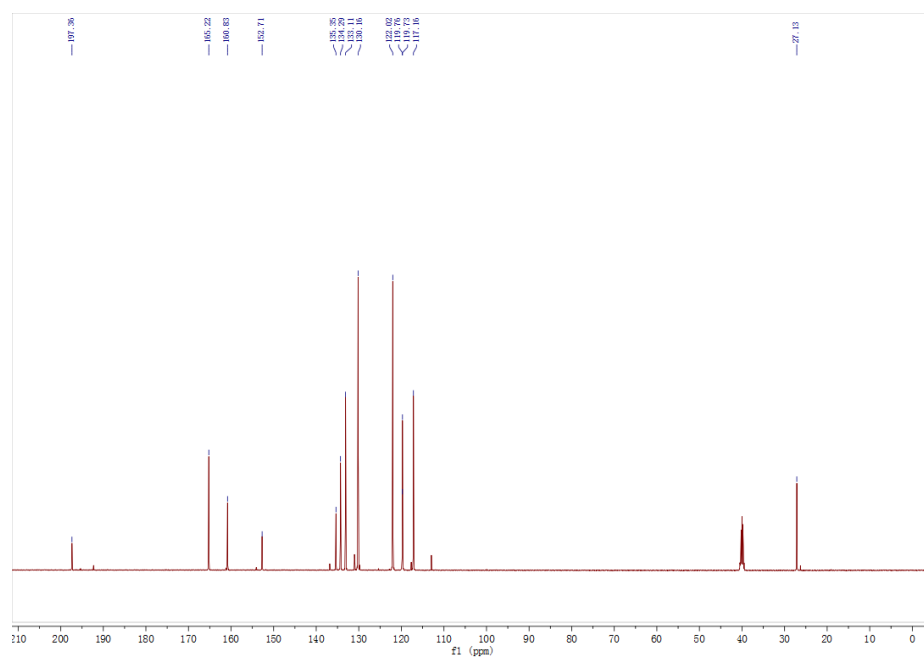


Figure S6 ¹³C NMR spectrum of S.