

Supplementary Materials

Microanalysis Characterization and Immunomodulatory Effect for Selenium-Enriched Polysaccharide from *Morchella esculenta* (L.) Pers.

Lijuan Qian ^{1,†}, Mengxiang Du ^{1,†}, Xiaoyan Yang ¹, Qian Wang ², Shengwei Huang ², Yuhua Ma ² and Yujun Sun ^{2,*}

¹ College of Agriculture, Anhui Science and Technology University, Fengyang 233100, China

² College of Life and Health Sciences, Anhui Science and Technology University, Fengyang 233100, China

* Correspondence: sunyujun208@126.com

† These authors contributed equally to this work.

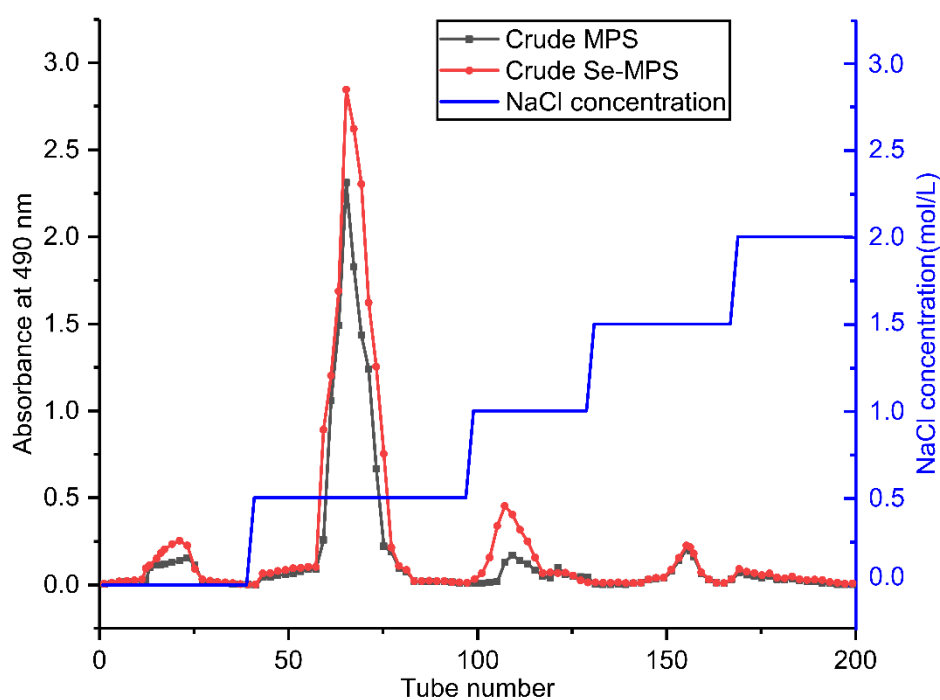


Figure S1. Elution curves of crude MPS and Se-MPS.