

Supplementary Materials

Identification of a synthetic polyhydroxyphenolic resveratrol analogue, 3,3',4,4',5,5'-hexahydroxy-*trans*-stilbene with anti SARS-CoV-2 activity

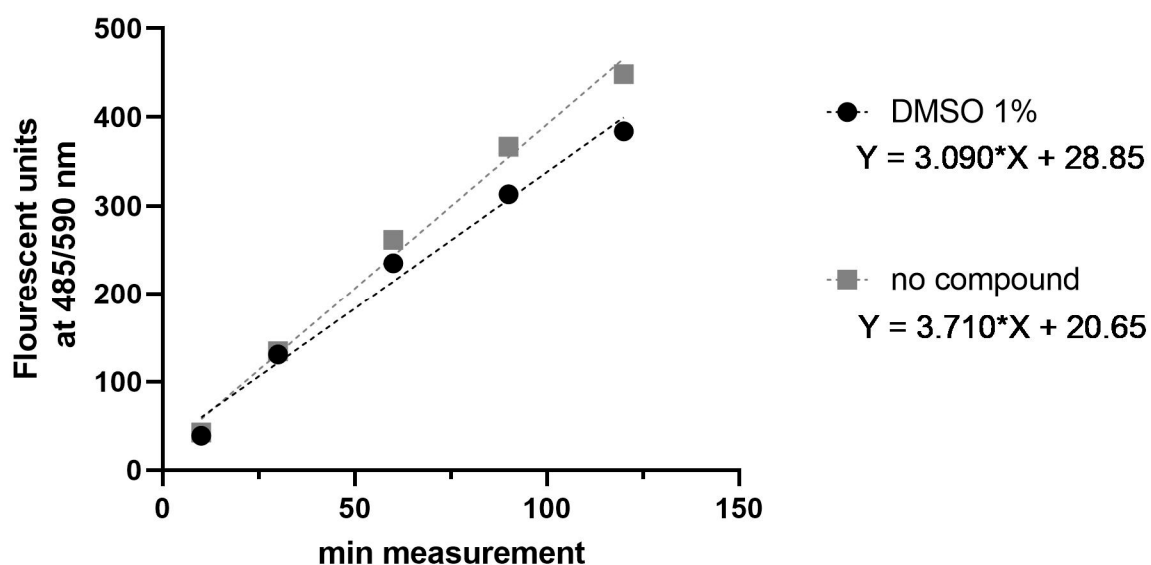


Figure S1. Metabolic activity of VeroE6 cells incubated with DMSO (1%) for 48 h. After washing the cells metabolic activity was measured over 120 min at wavelength of 485/520 nm. Data are presented as mean value of two determinations.

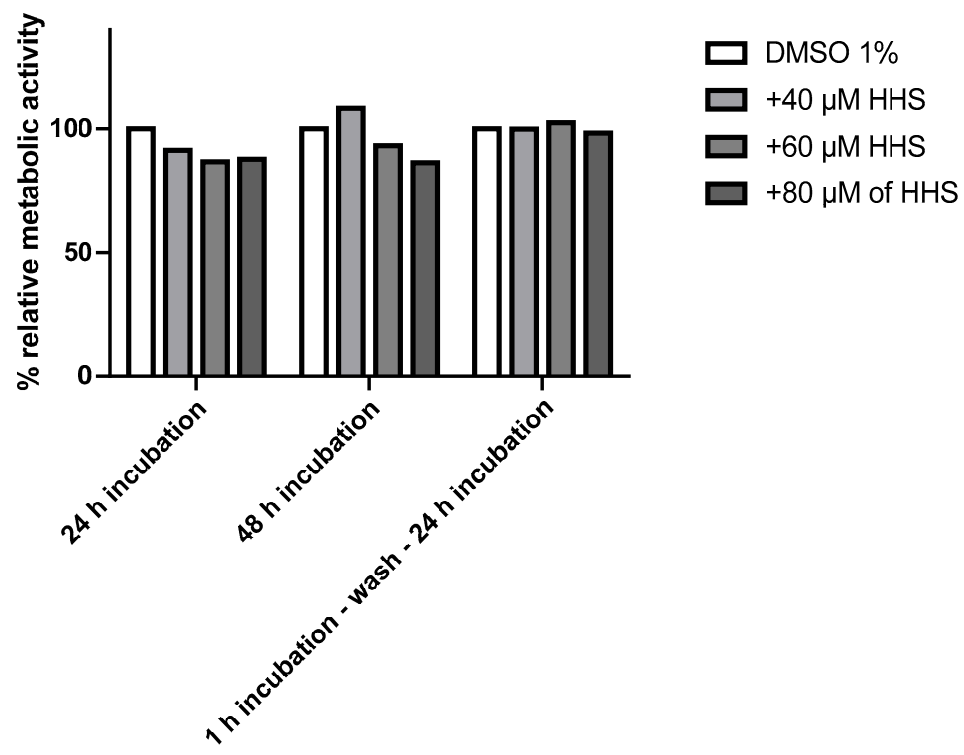


Figure S2. VeroE6 cells were incubated with HHS (40-80 μ M) for 1 h (washed and incubated in MEM + 2 % FCS for additional 24 h), 24 h or 48 h. Metabolic activity was measured over 120 min at wavelength of 485/520 nm. Data are presented as mean value of two determinations