

Supplementary Materials

Multiepitope Subunit Peptide-Based Nanovaccine against Por-Cine Circovirus Type 2 (PCV2) Elicited High Antibody Titers in Vaccinated Mice

Viet Tram Duong ¹, Prashamsa Koirala ¹, Sung-Po R. Chen ², Michael J. Monteiro ², Mariusz Skwarczynski ^{1,*} and Istvan Toth ^{1,3,*}

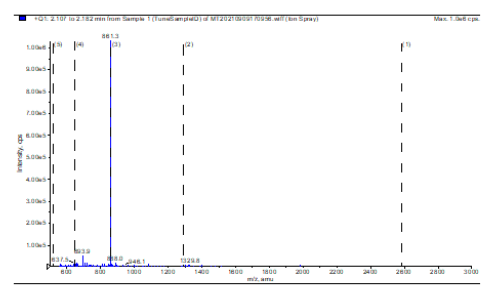
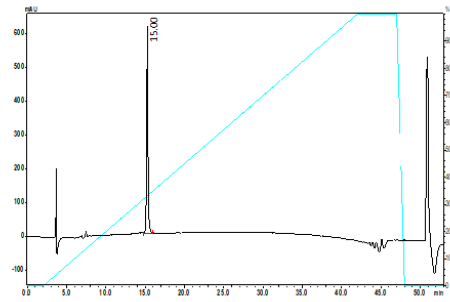
¹ School of Chemistry and Molecular Biosciences, The University of Queensland, St Lucia, QLD 4072, Australia

² Australian Institute of Bioengineering and Nanotechnology, The University of Queensland, St Lucia, QLD 4072, Australia

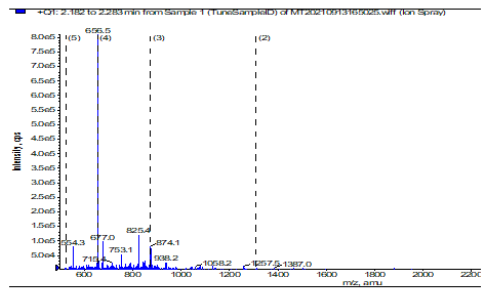
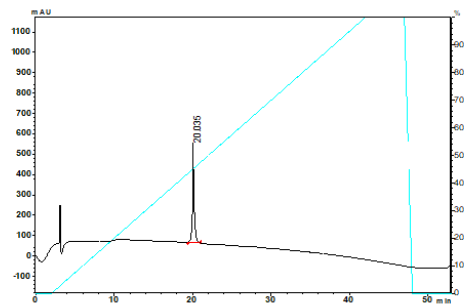
³ School of Pharmacy, The University of Queensland, Woolloongabba, QLD 4102, Australia

* Correspondence: m.skwarczynski@uq.edu.au (M.S.); i.toth@uq.edu.au (I.T.)

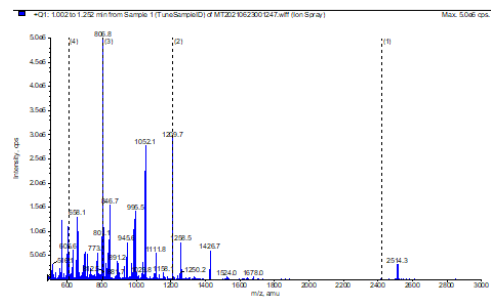
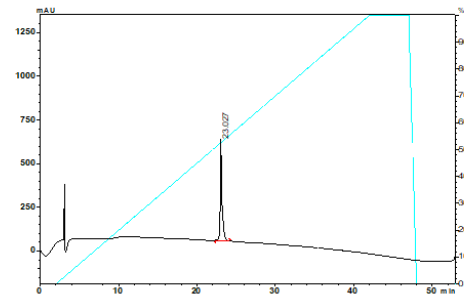
Peptide 1



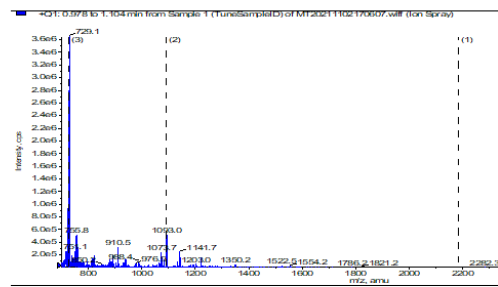
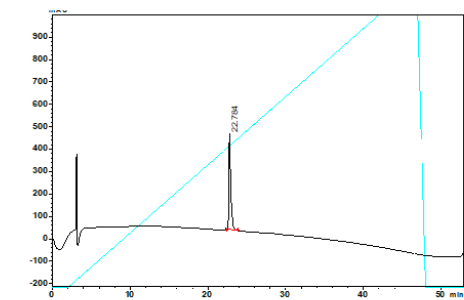
Peptide P1



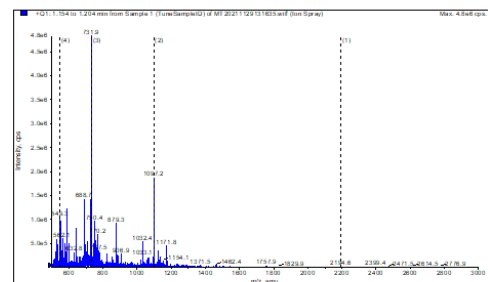
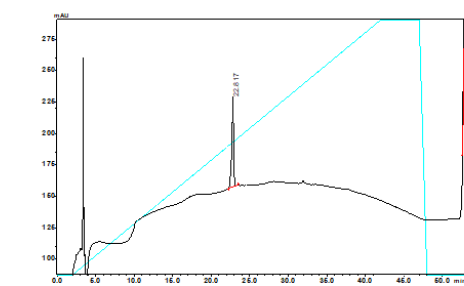
Peptide P2



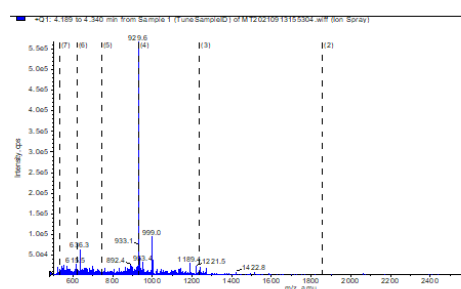
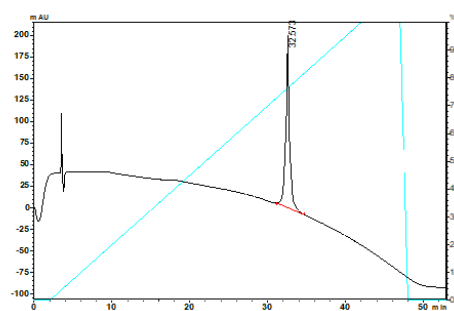
Peptide P3



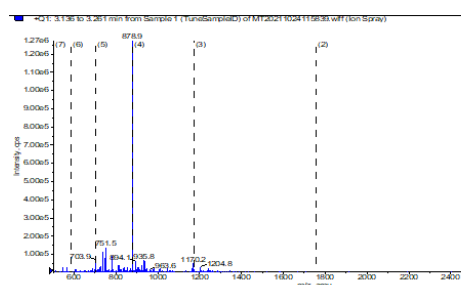
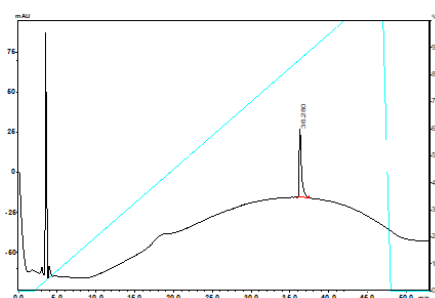
Peptide P4



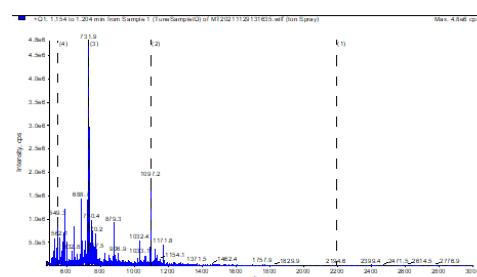
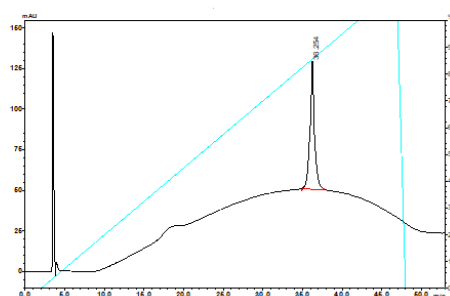
Conjugate 9



Conjugate 10



Conjugate 11



Conjugate 12

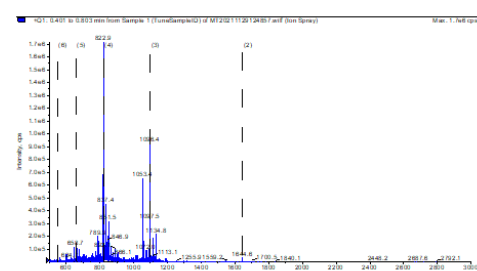
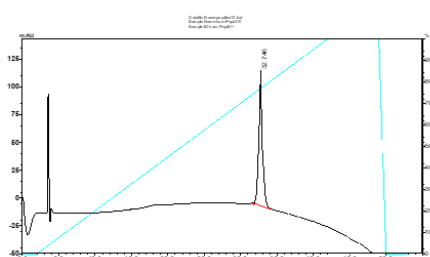
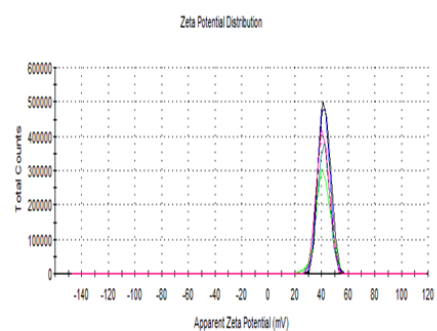
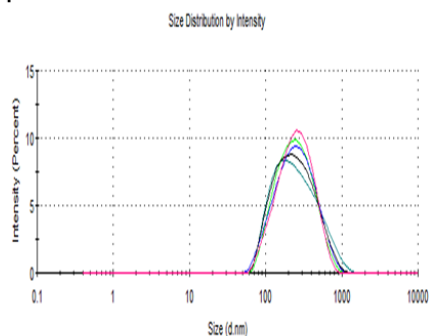
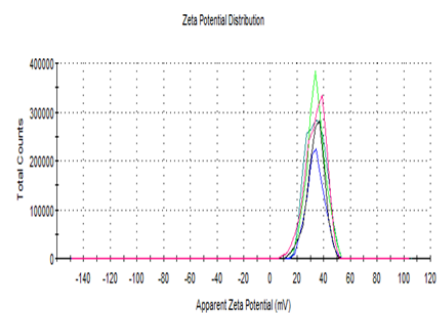
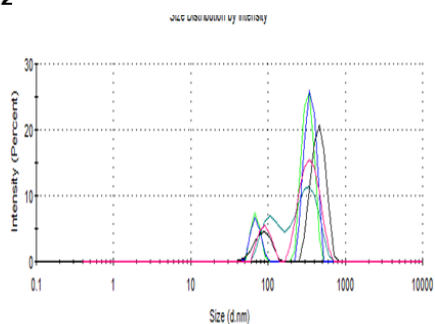


Figure S1. HPLC and ESI-MS spectra of 1–4, P1-P4 and 9–12.

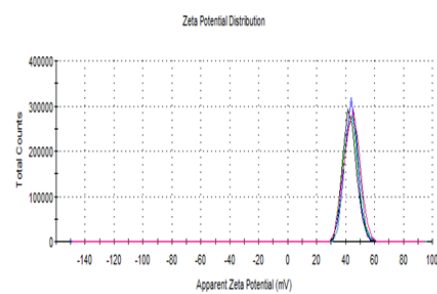
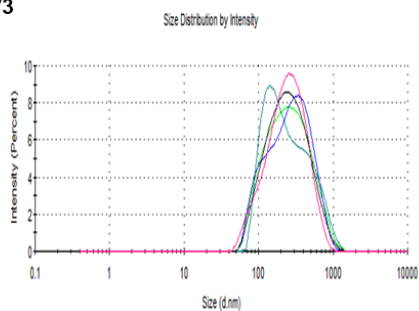
V1



V2



V3



V4

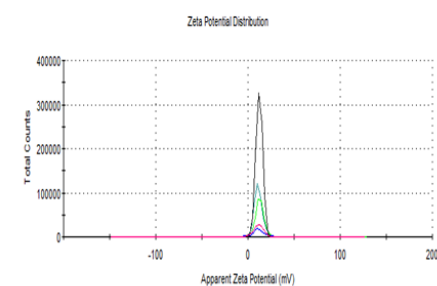
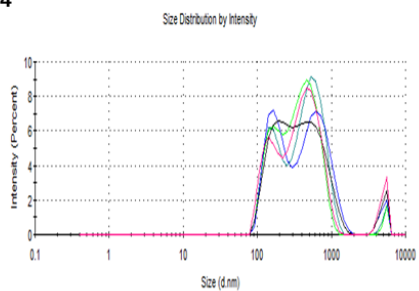
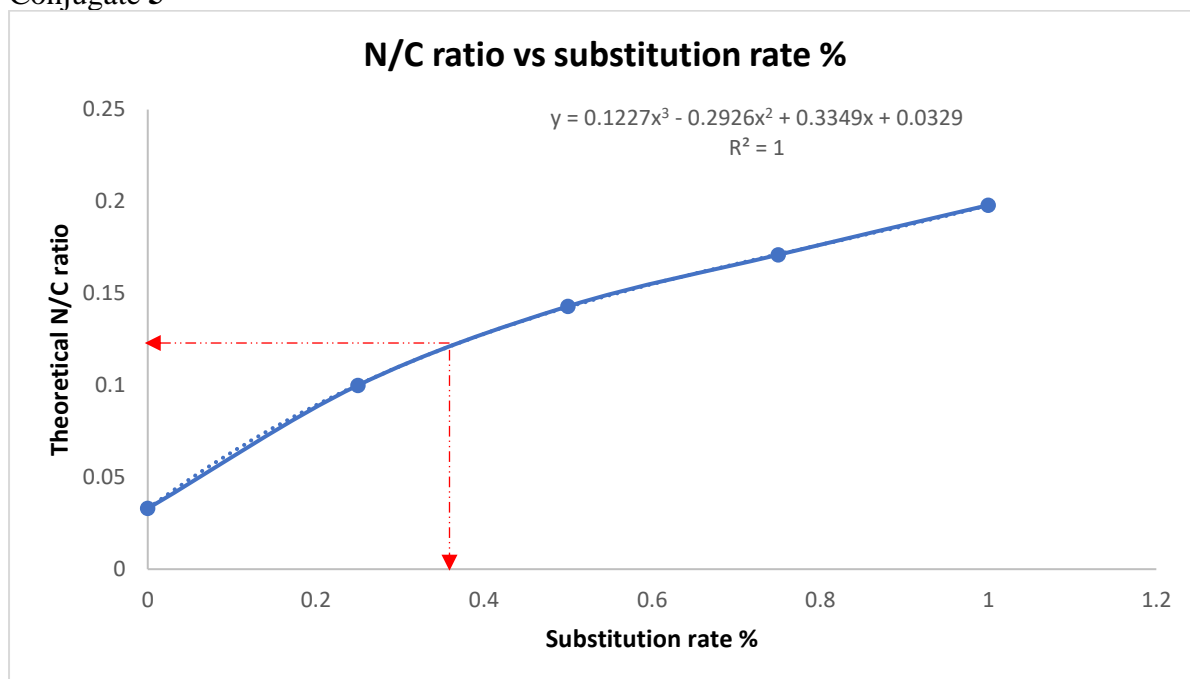
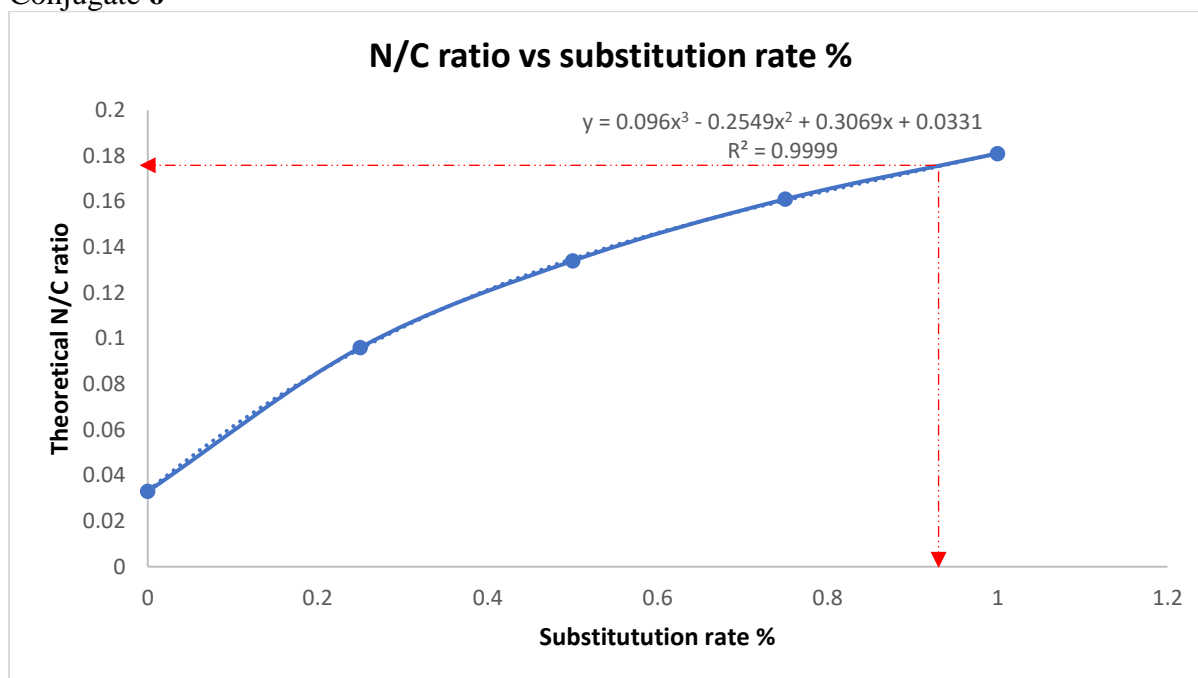


Figure S2. DLS spectra of vaccine candidates **V1-V4** (size distribution by intensity and zeta potential).

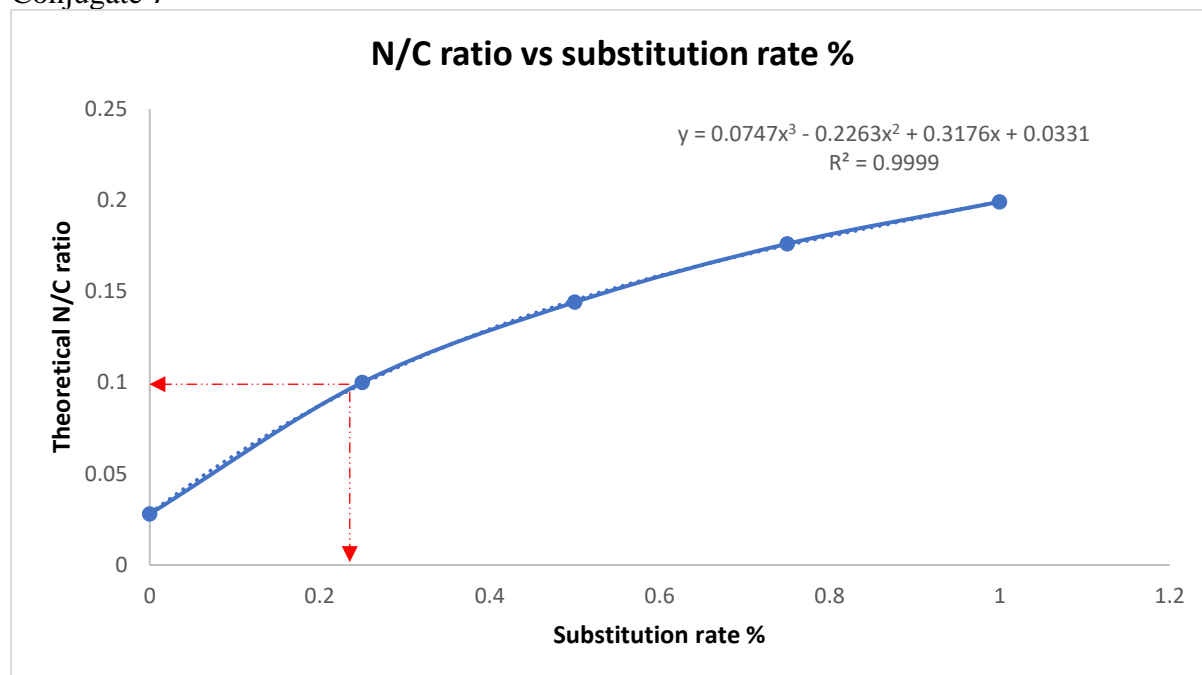
Conjugate 5



Conjugate 6



Conjugate 7



Conjugate 8

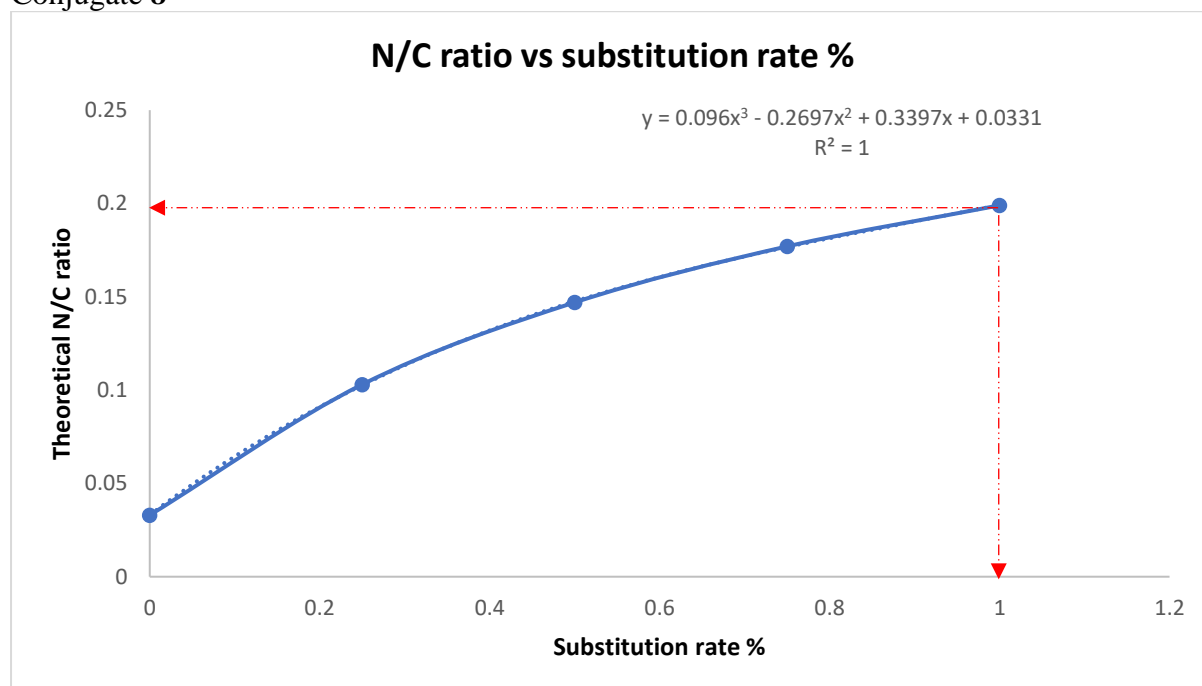


Figure S3. The curve of the theoretical substitution ratio (1 = 100%, horizontal axis) of peptide **P1-P4** to PMA in conjugates **5-8** versus N/C ratio (nitrogen carbon ratio of elemental analysis) of conjugates (vertical axis). Experimentally determined N/C by elemental analysis: 0.124 (**5**), 0.170 (**6**), 0.091 (**7**), and 0.204 (**8**).