

Supplementary data

Supplementary data (HR-ESI-MS, ESI-MS², ¹H-NMR, ¹³C-NMR, DEPT ($\theta = 90^\circ$), DEPT ($\theta = 135^\circ$), HMBC and HSQC spectra for arctigenin-4'-O-glucuronide) associated with this article can be found as following:

Figure S1. HR-ESI-MS

Spectrum from 03.wiff (sample 1) - 03, -TOF MS (50 - 1000) from 2.080 to 2.192 min

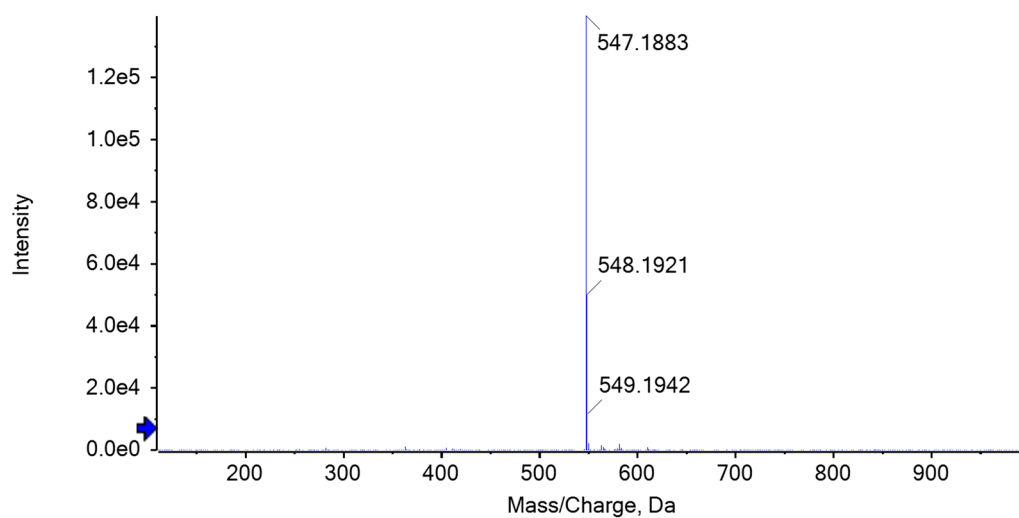


Figure S2. ESI-MS²

Spectrum from 03-ms2.wiff (sample 1) - 03-ms2, -T...S² of 547.0 (50 - 1000) from 1.894 to 2.153 min

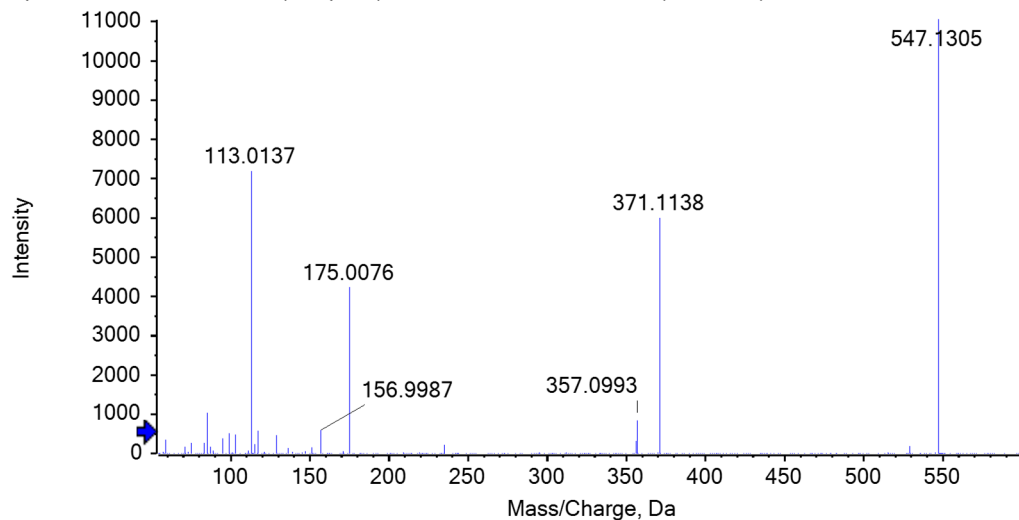


Figure S3. ^1H -NMR (DMSO- d_6)

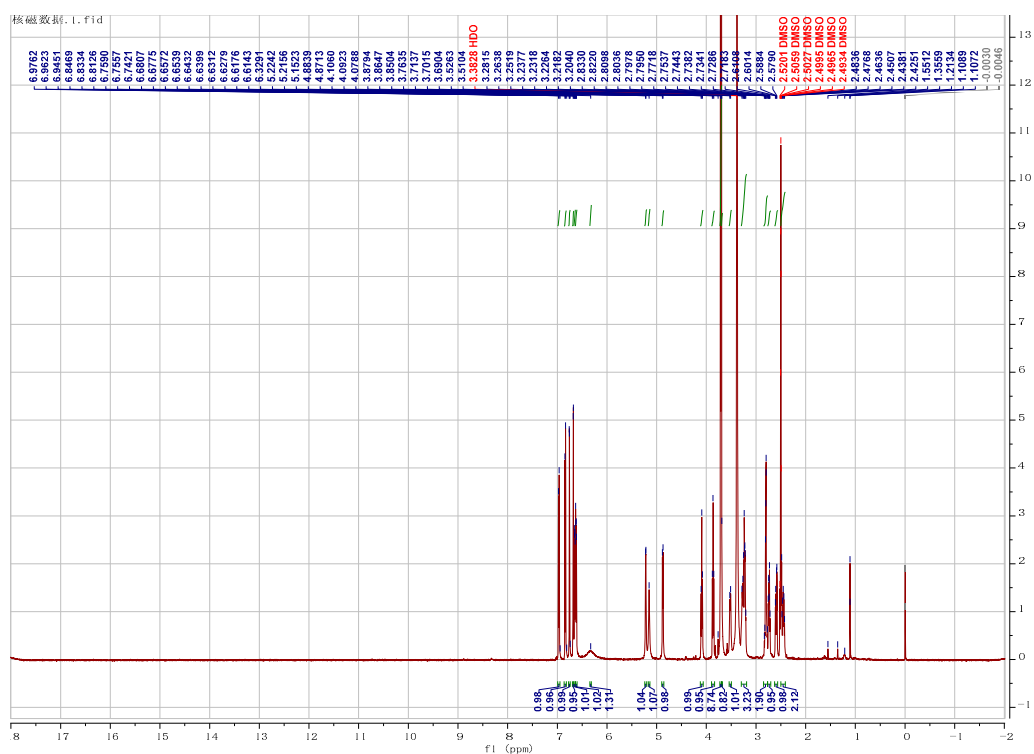


Figure S4. ^{13}C -NMR (DMSO- d_6)

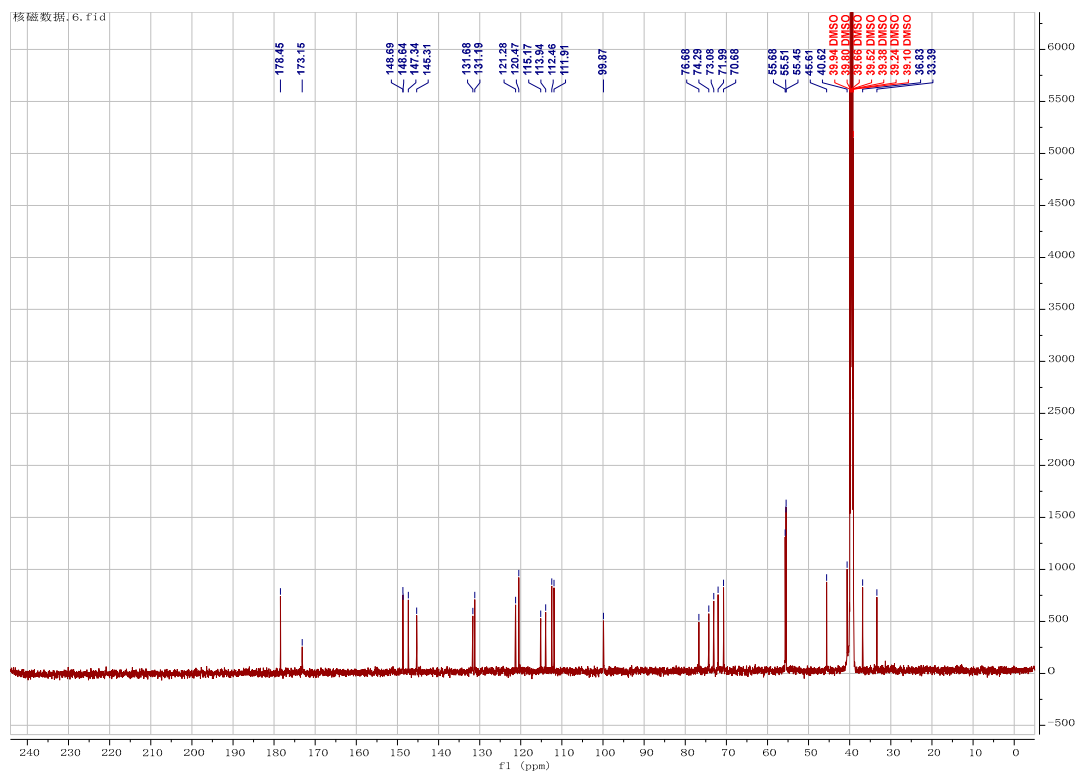


Figure S5. DEPT ($\theta = 90^\circ$) (DMSO- d_6)

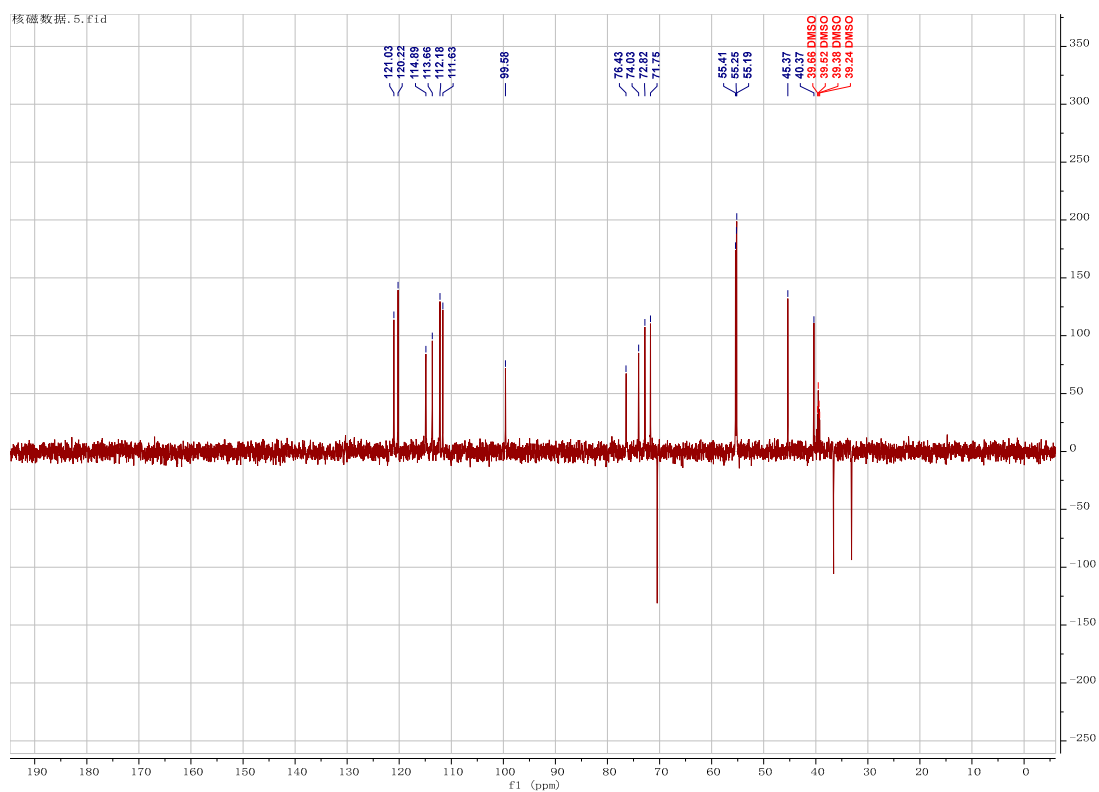


Figure S6. DEPT ($\theta = 135^\circ$) (DMSO- d_6)

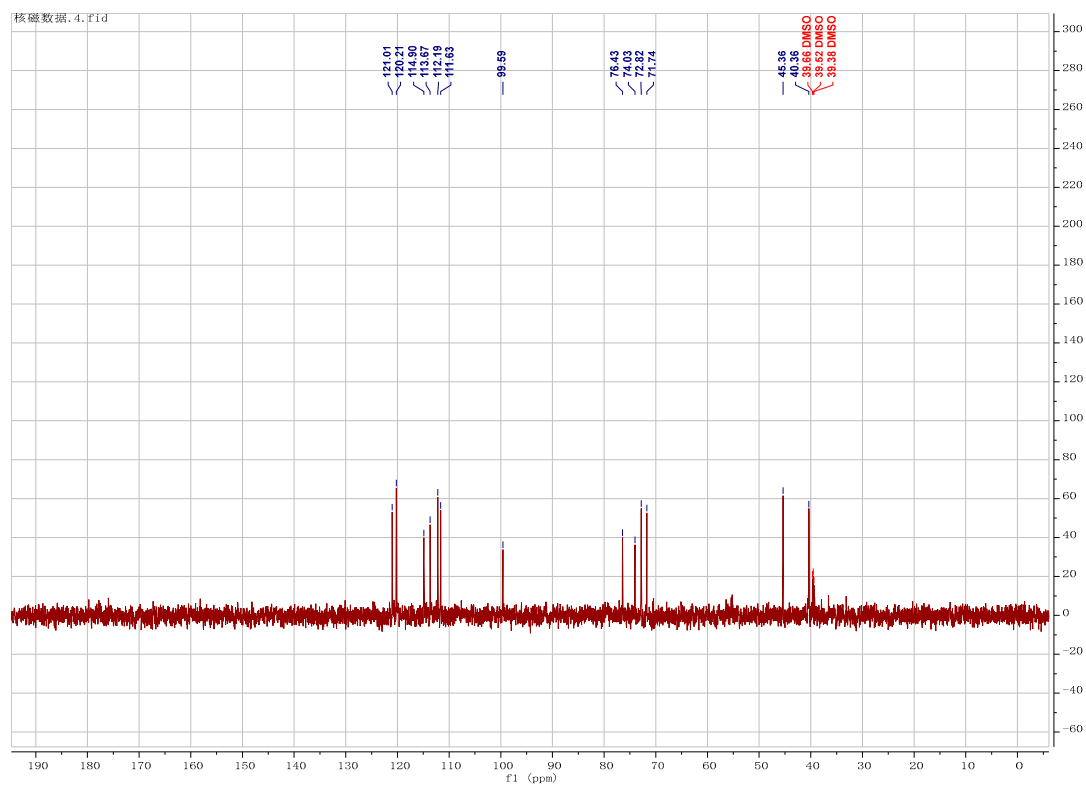


Figure S7. HMBC (DMSO- d_6)

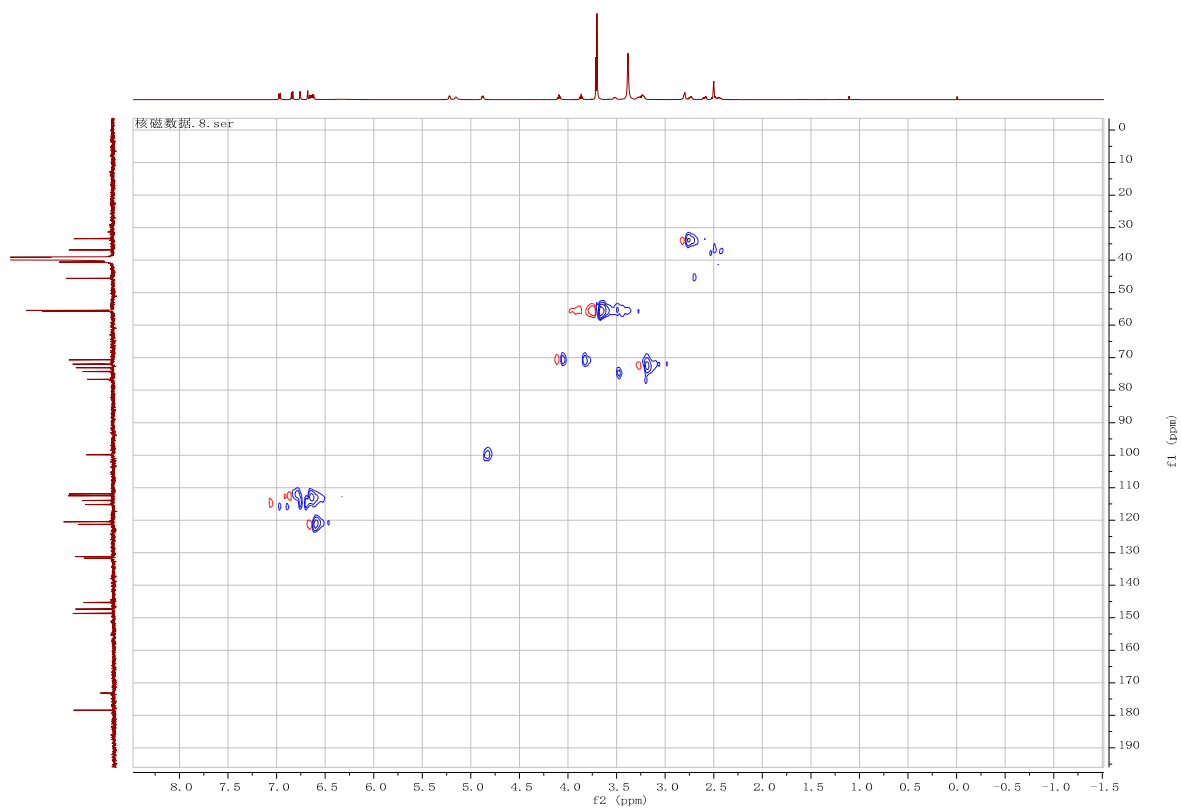
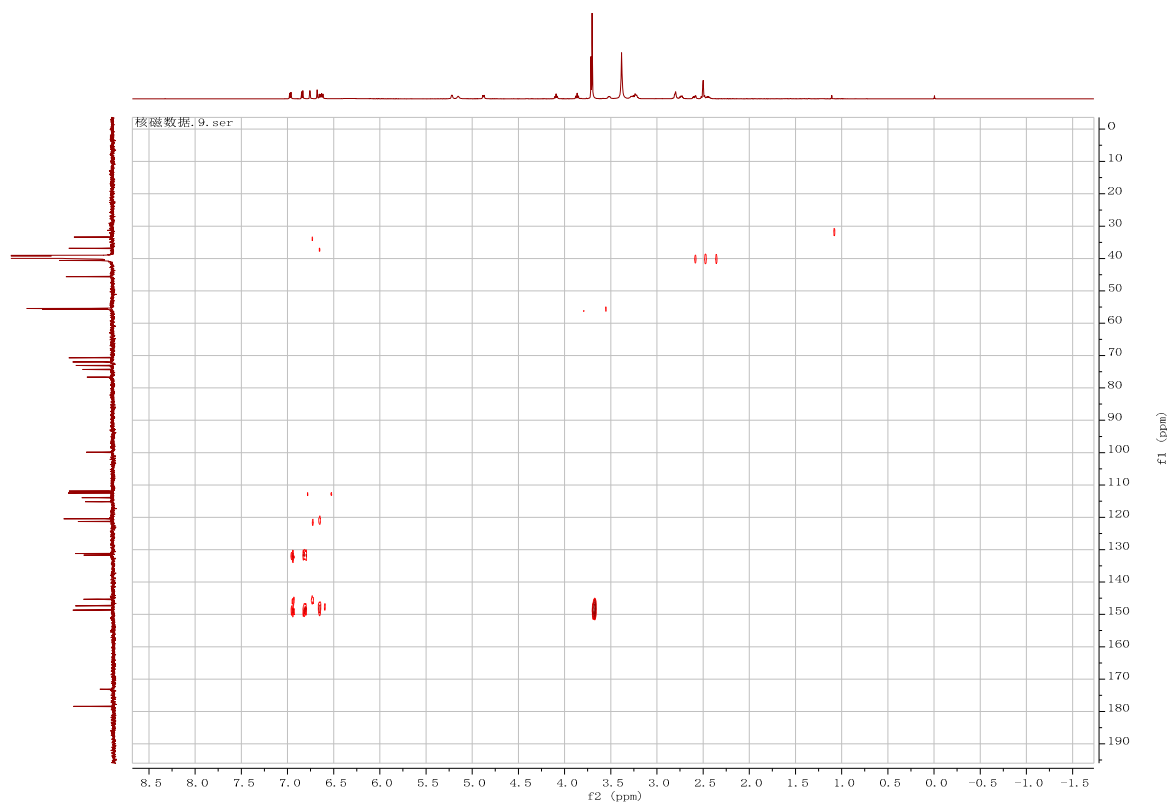


Figure S8. HSQC (DMSO- d_6)



IR (KBr)

