

Supplementary

Chiral Separation of Cannabichromene, Cannabicyclol, and their Acidic Analogs on Polysaccharide Chiral Stationary Phases

John M. Ferraro ¹, Dr. Weston J. Umstead ^{1,*}

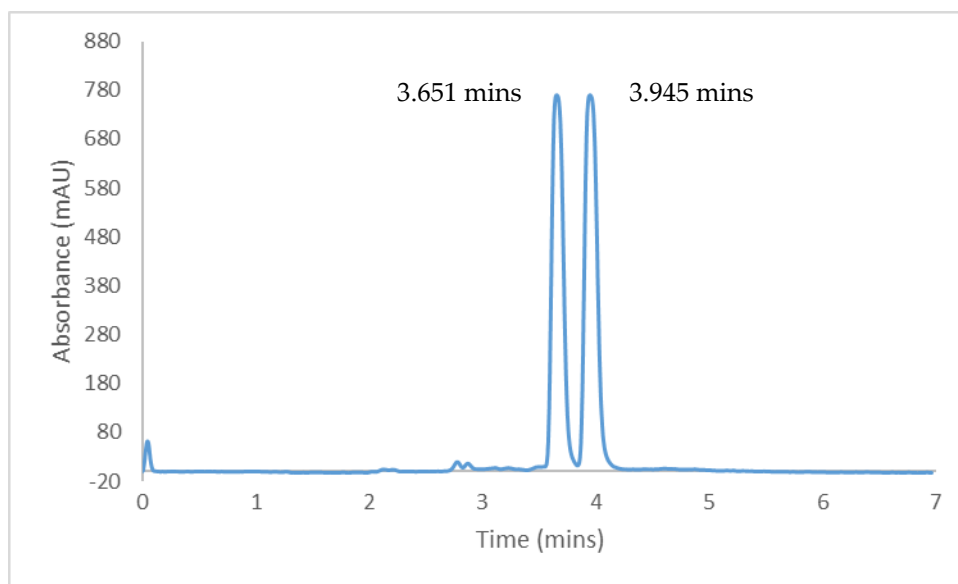


Figure S1: Separation of CBC on CHIRALPAK® IB N-3 with Hex-MtBE = 80-20 (v/v)

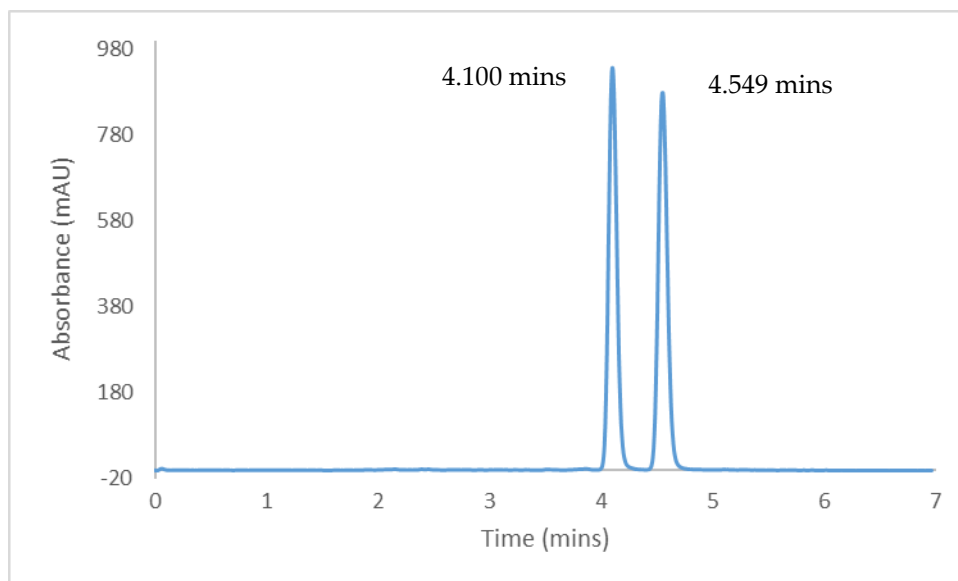


Figure S2: Separation of CBC on CHIRALPAK® IB N-3 with Hex-EtOAc = 90-10 (v/v)

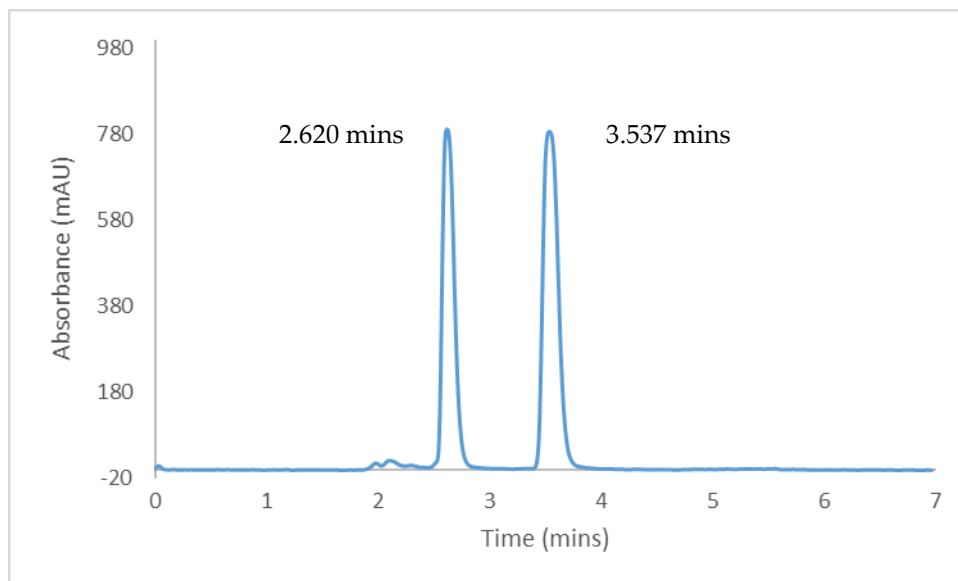


Figure S3: Separation of CBC on CHIRALPAK® IC-3 with Hex-MtBE = 80-20 (v/v)

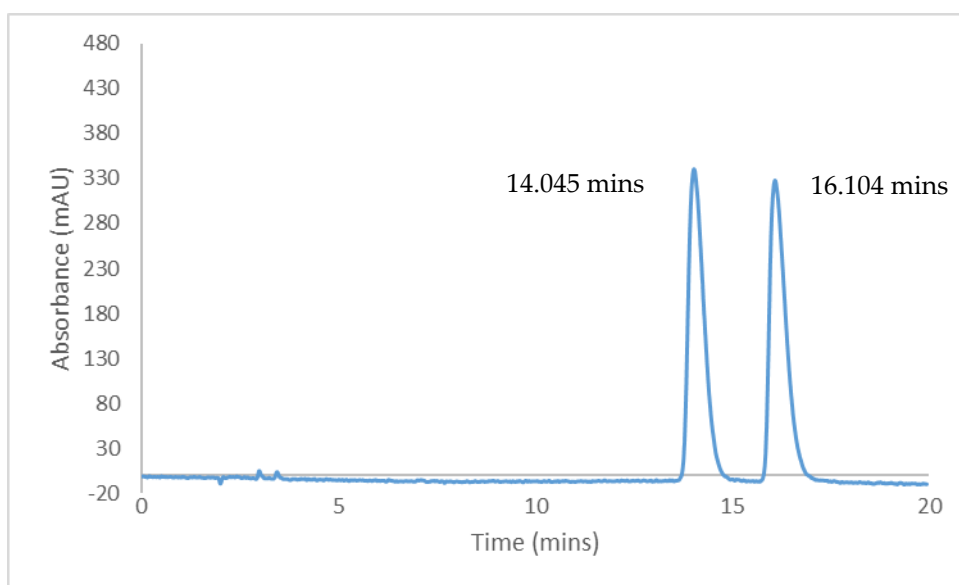


Figure S4: Separation of CBC on CHIRALPAK® IG-3 with Hex-DCM = 80-20 (v/v)

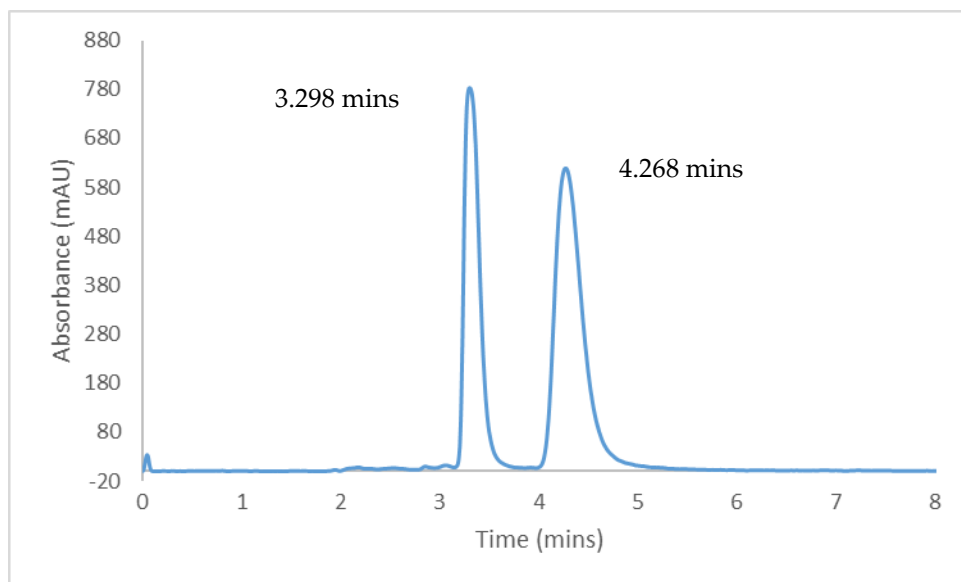


Figure S5: Separation of CBC on CHIRALPAK® IG-3 with Hex-MtBE = 80-20 (v/v)

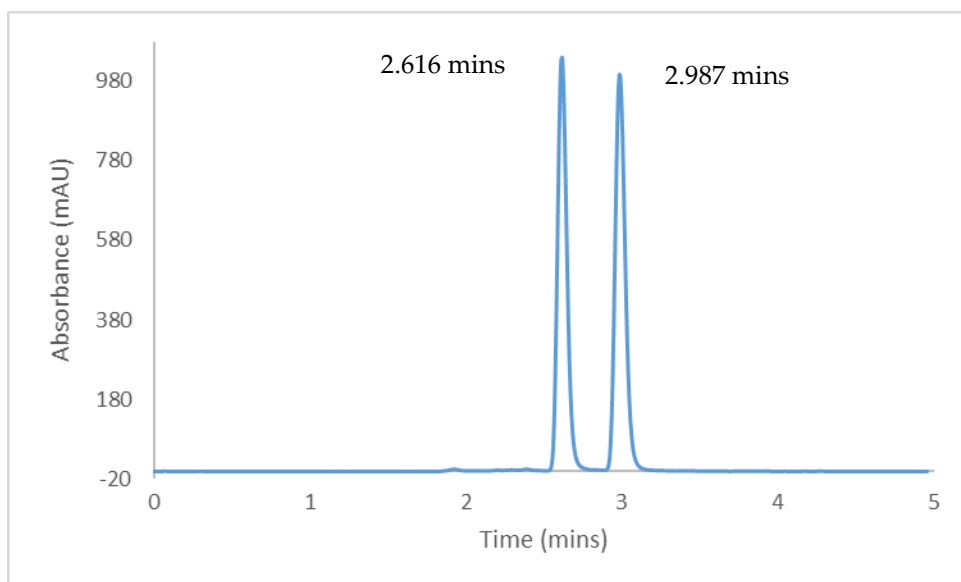


Figure S6: Separation of CBC on CHIRALPAK® IK-3 with Hex-EtOAc = 90-10 (v/v)

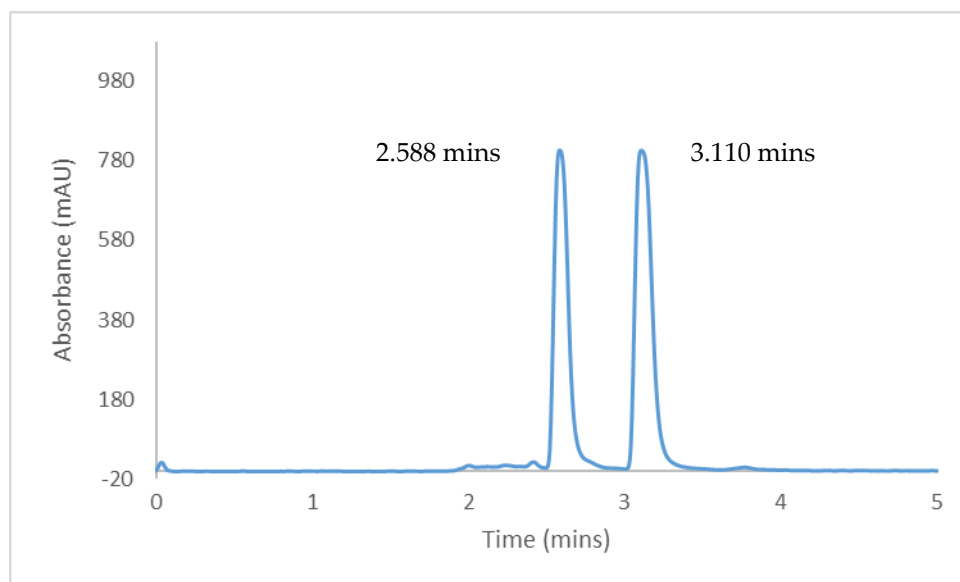


Figure S7: Separation of CBC on CHIRALPAK® IK-3 with Hex-MtBE = 80-20 (v/v)

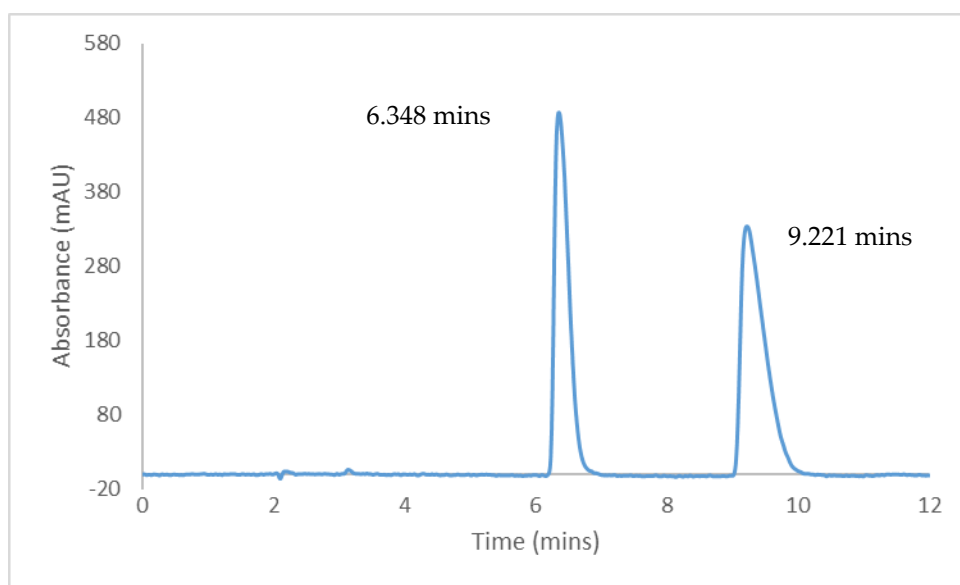


Figure S8: Separation of CBC on CHIRALPAK® IC-3 with Hex-DCM = 80-20 (v/v)

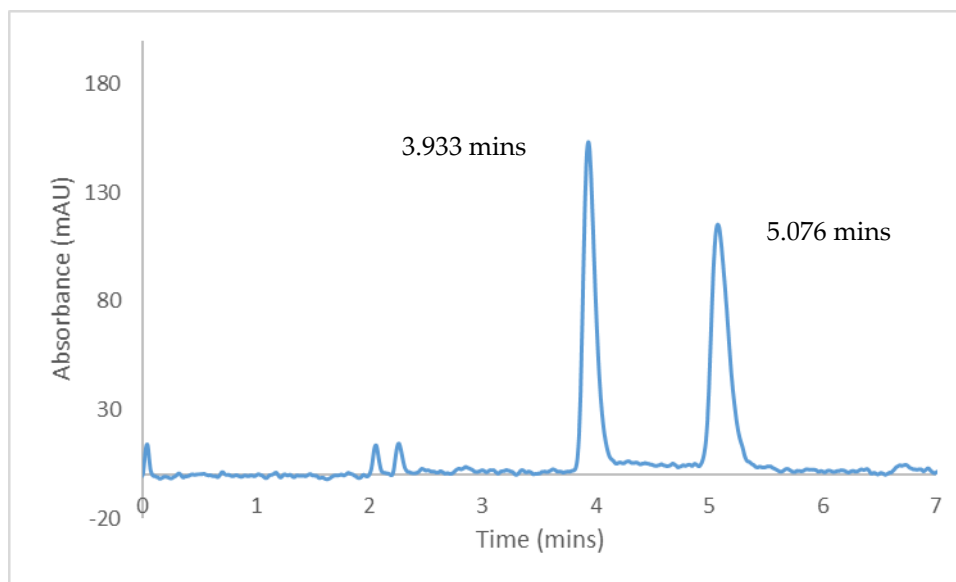


Figure S9: Separation of CBA on CHIRALPAK® IC-3 with Hex-DCM-TFA = 80-20-0.1 (v/v/v)

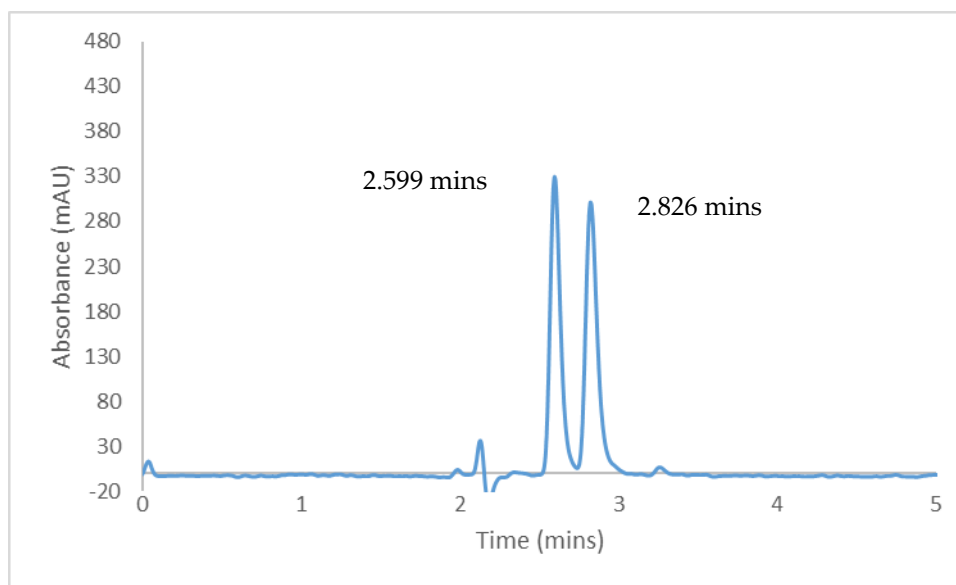


Figure S10: Separation of CBA on CHIRALPAK® IK-3 with Hex-MtBE-TFA = 80-20-0.1 (v/v/v)

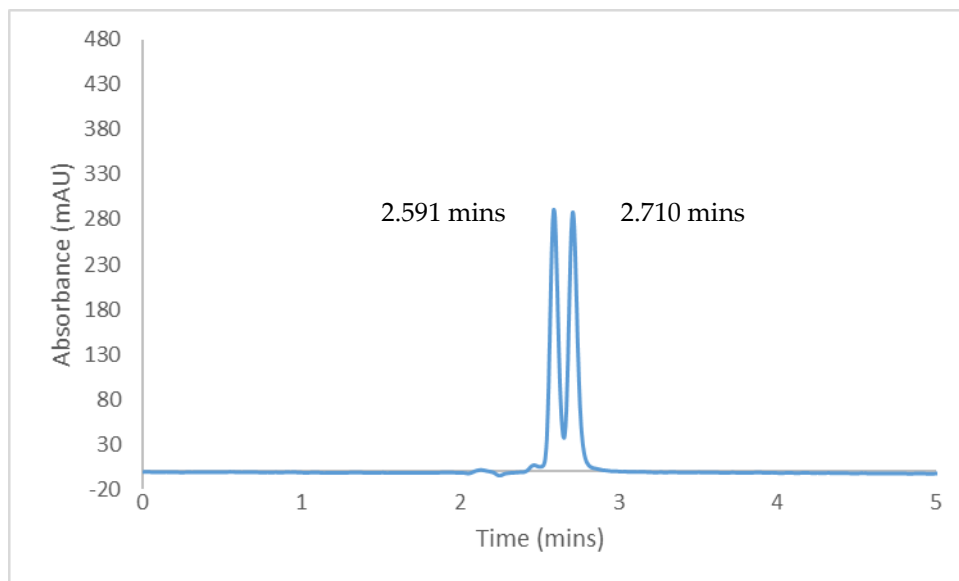


Figure S11: Separation of CBCA on CHIRALPAK® IK-3 with Hex-EtOAc-TFA = 90-10-0.1 (v/v/v)

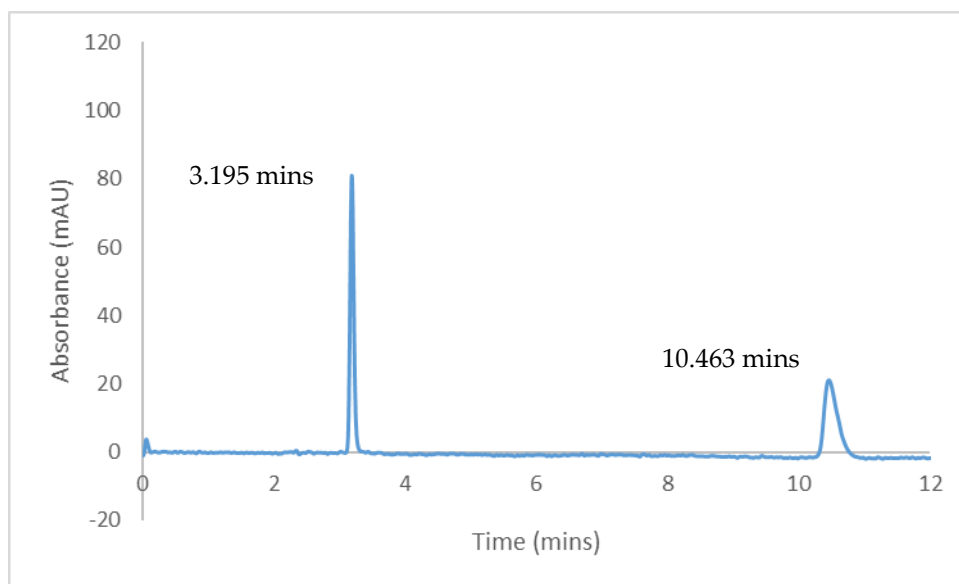


Figure S12: Separation of CBL on CHIRALPAK® IBN-3 with Hex-EtOAc = 90-10 (v/v)

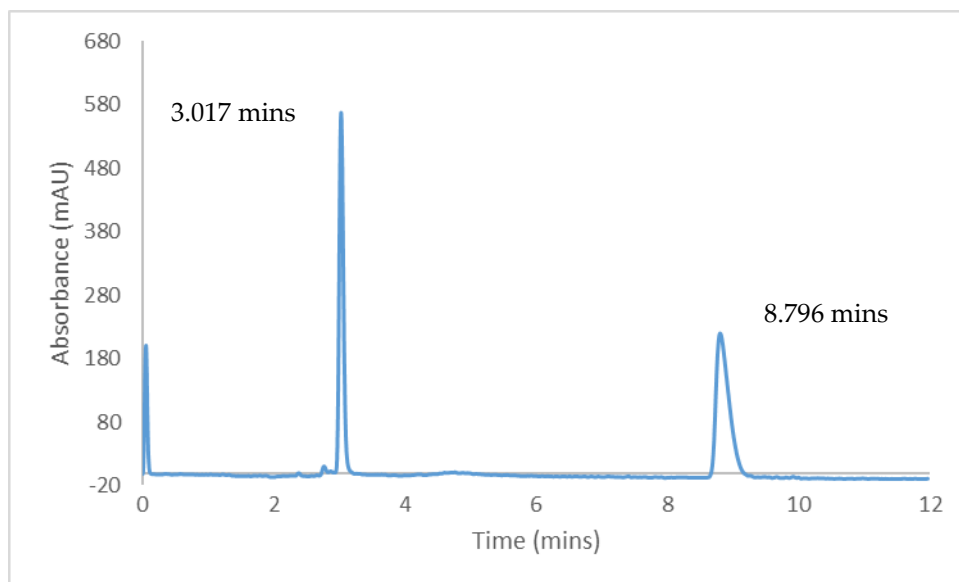


Figure S13: Separation of CBL on CHIRALPAK® IBN-3 with Hex-MtBE = 80-20 (v/v)

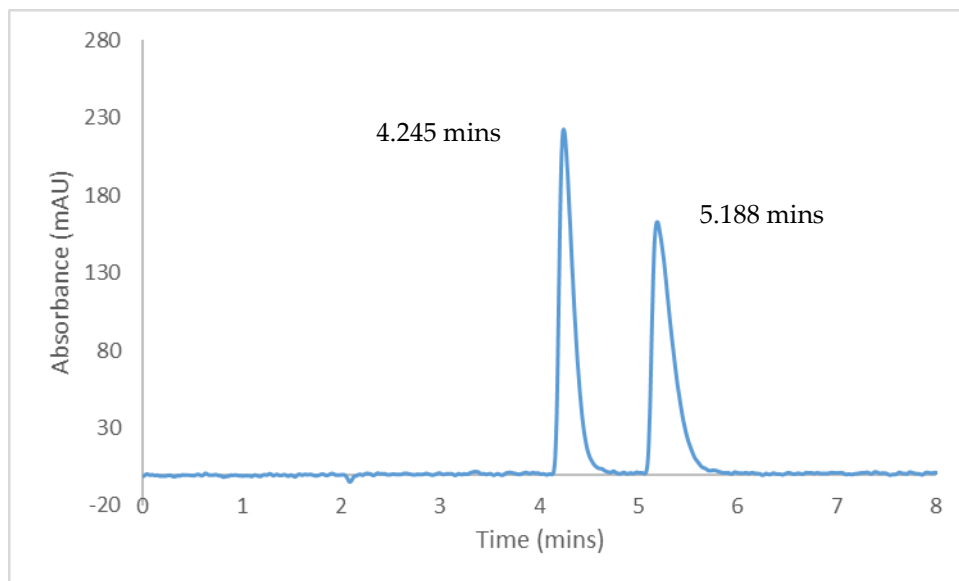


Figure S14: Separation of CBL on CHIRALPAK® IC-3 with Hex-DCM = 80-20 (v/v)

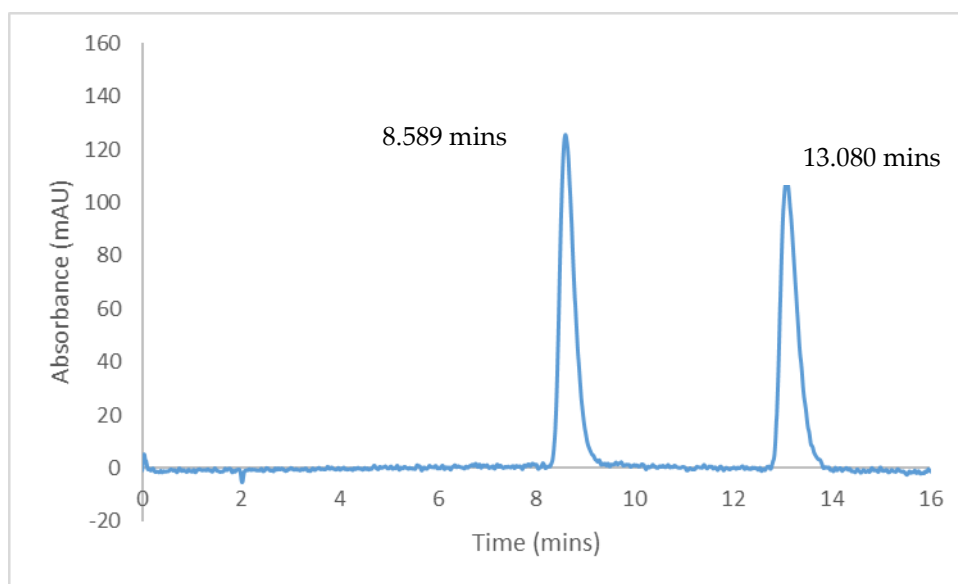


Figure S15: Separation of CBL on CHIRALPAK® IG-3 with Hex-DCM = 80-20 (v/v)

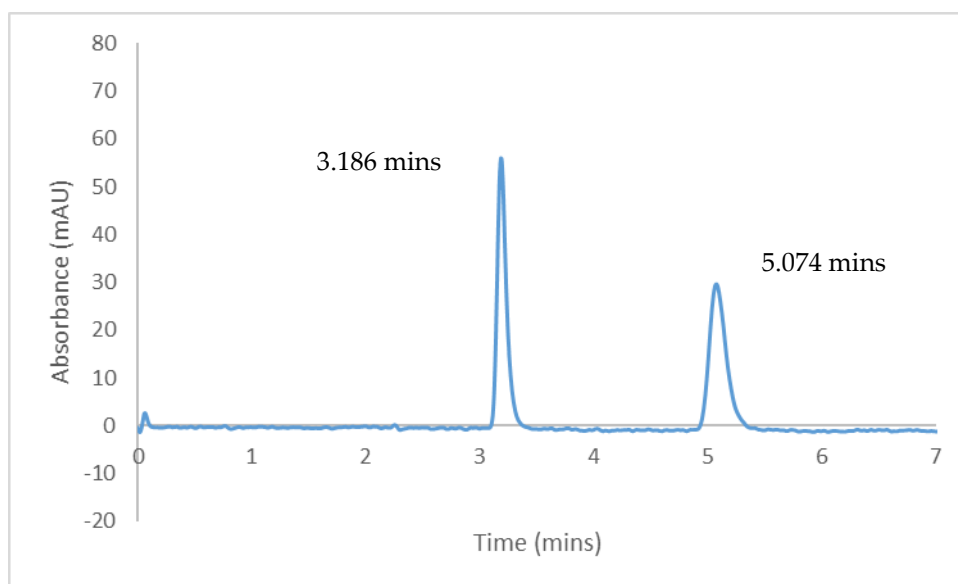


Figure S16: Separation of CBL on CHIRALPAK® IG-3 with Hex-EtOAc = 90-10 (v/v)

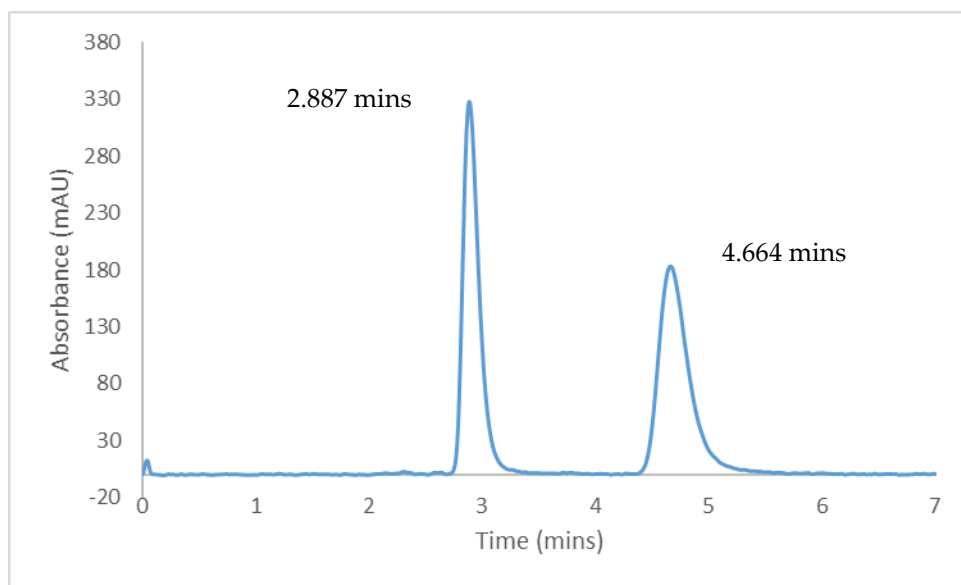


Figure S17: Separation of CBL on CHIRALPAK® IG-3 with Hex-MtBE = 80-20 (v/v)

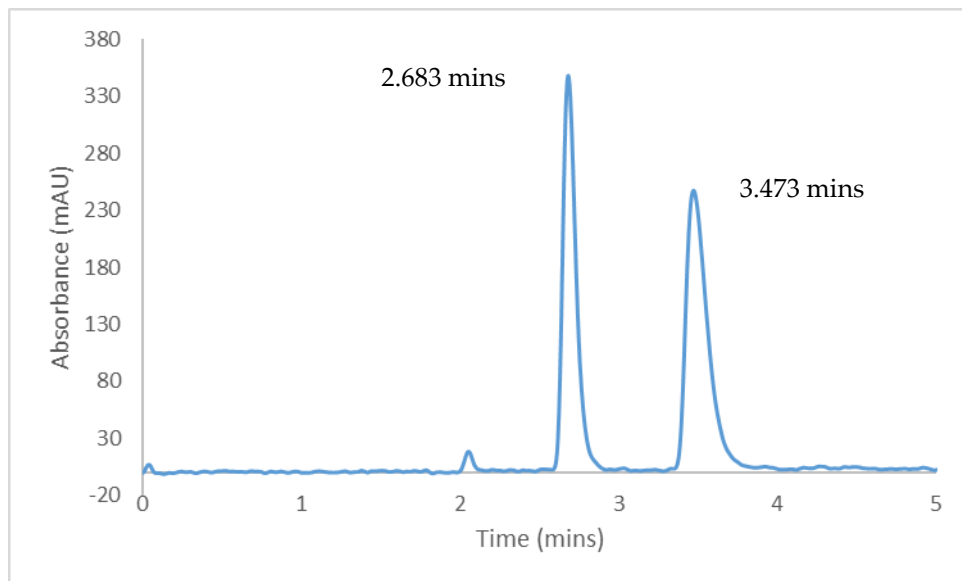


Figure S18: Separation of CBLA on CHIRALPAK® IC-3 with Hex-DCM-TFA = 80-20-0.1 (v/v/v)

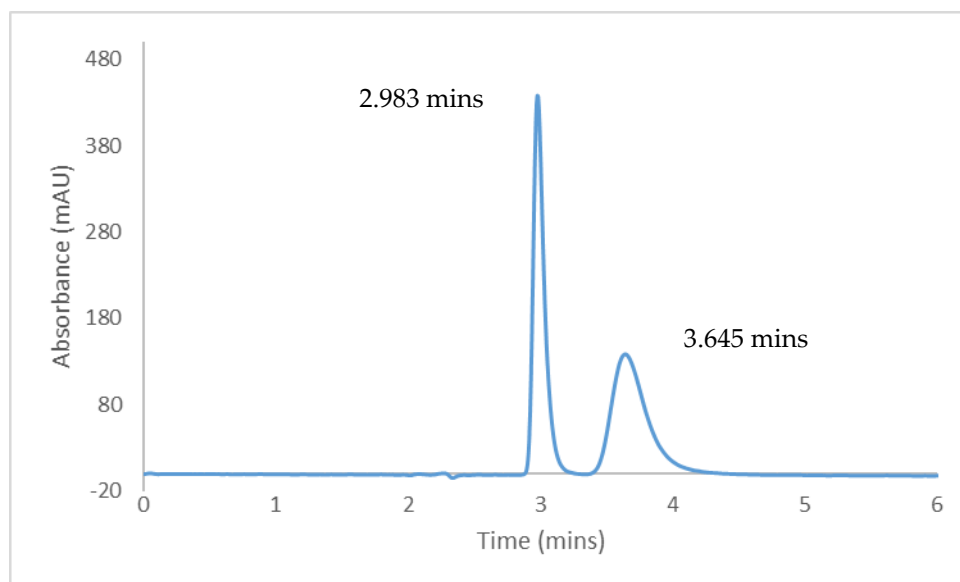


Figure S19: Separation of CBLA on CHIRALPAK® IG-3 with Hex-EtOAc-TFA = 90-10-0.1 (v/v/v)

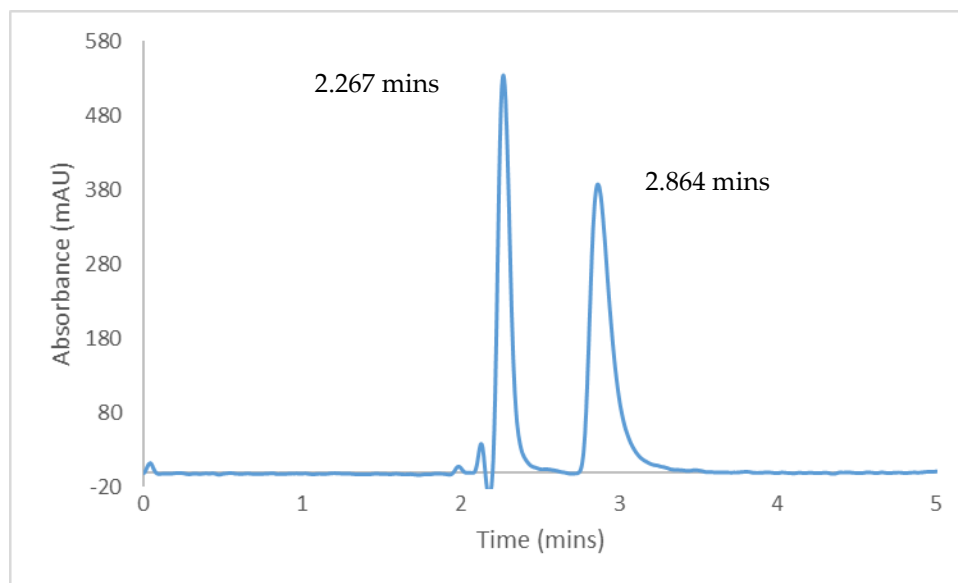


Figure S20: Separation of CBLA on CHIRALPAK® IK-3 with Hex-MtBE-TFA = 80-20-0.1 (v/v/v)