

# Supplementary data

## NMR Spectra of compound isolated from *Ficus lutea*

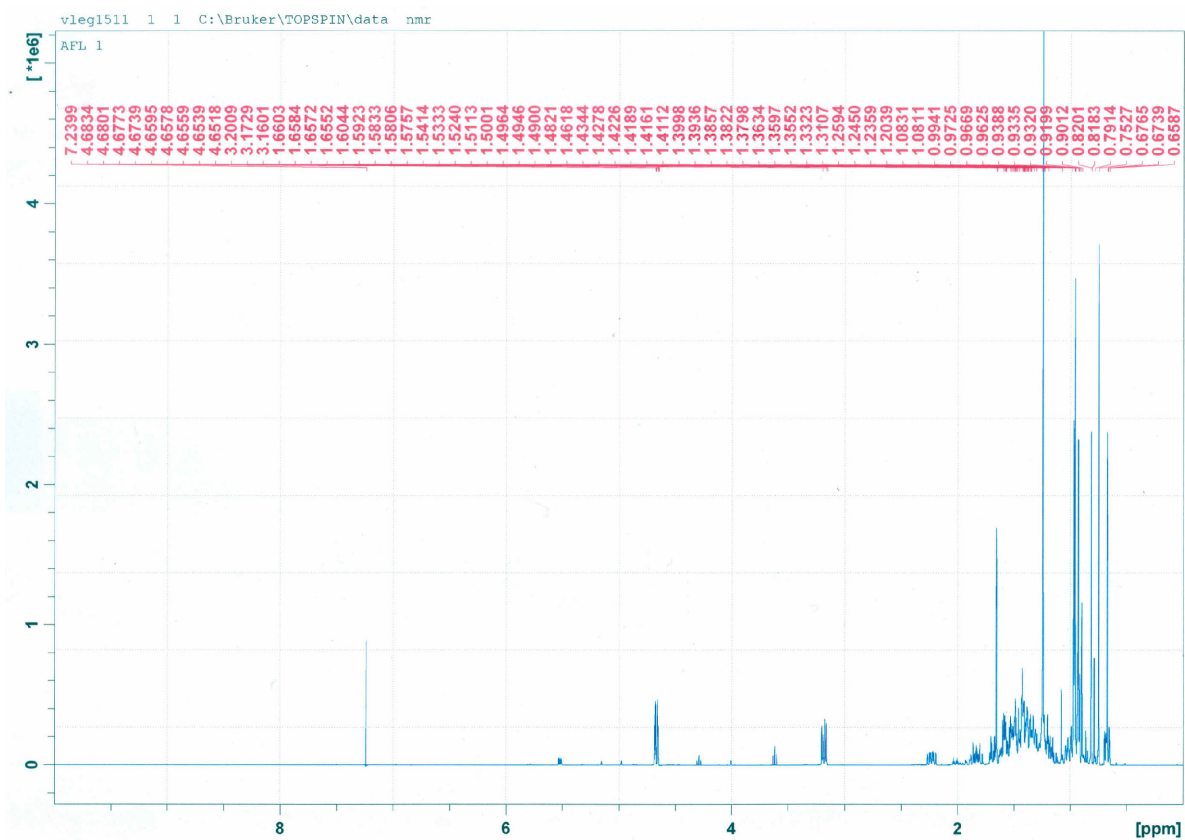


Figure S1:  $^1\text{H}$ -NMR (500 MHz,  $\text{CDCl}_3$ ) of Lupeol

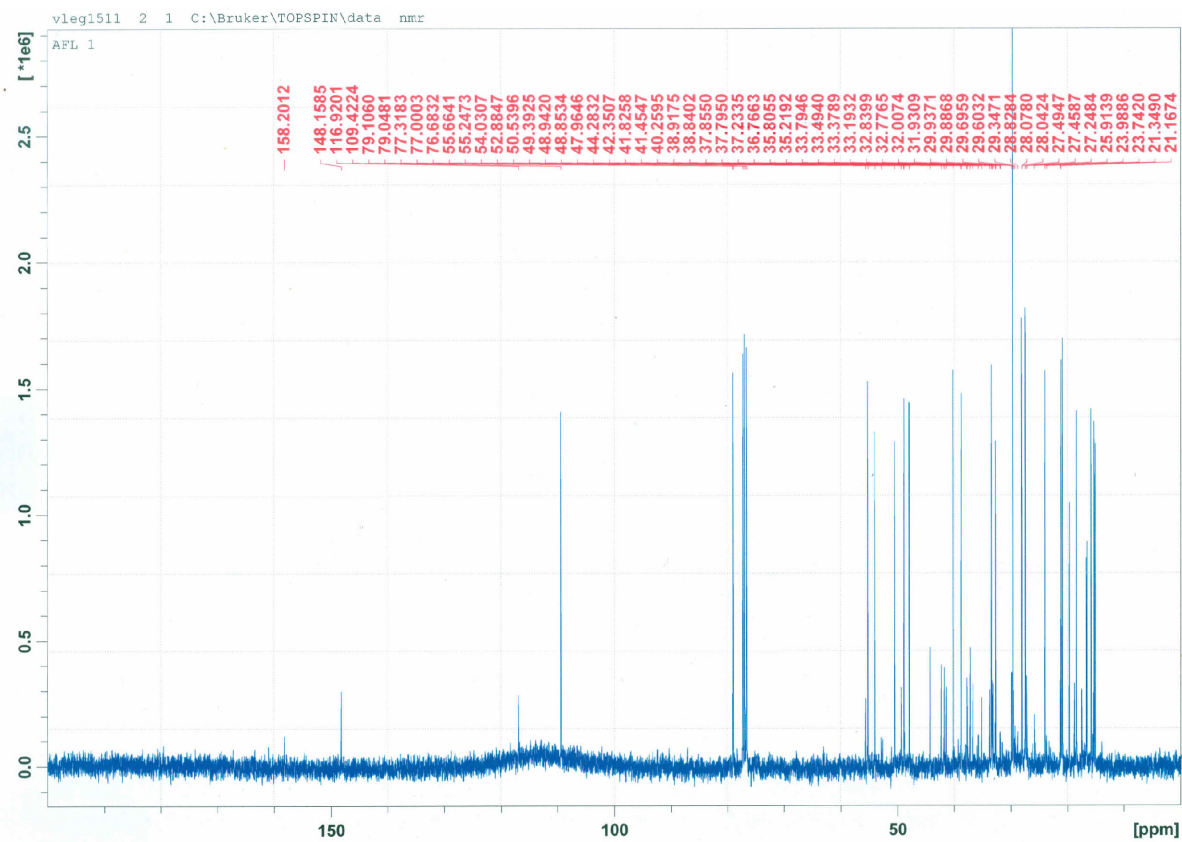


Figure S2:  $^{13}\text{C}$ -NMR (125 MHz,  $\text{CDCl}_3$ ) Spectrum of Lupeol

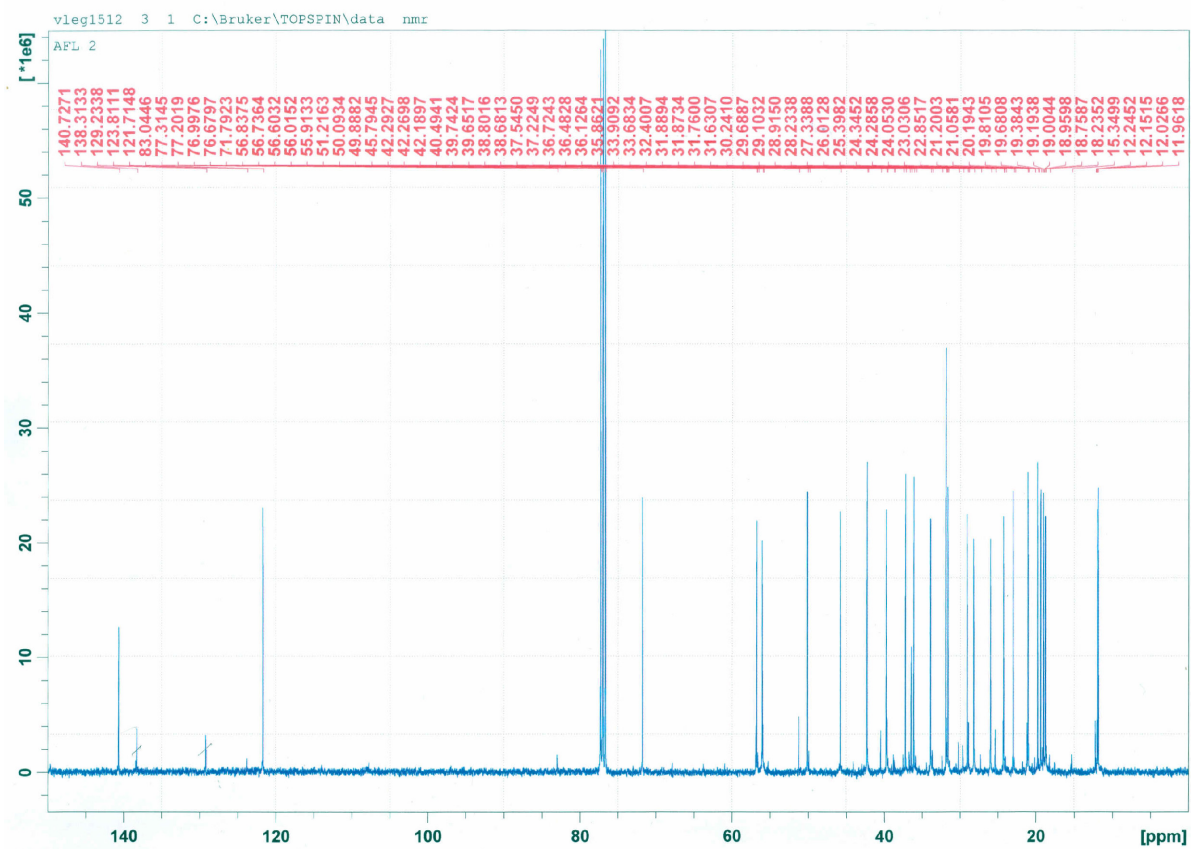
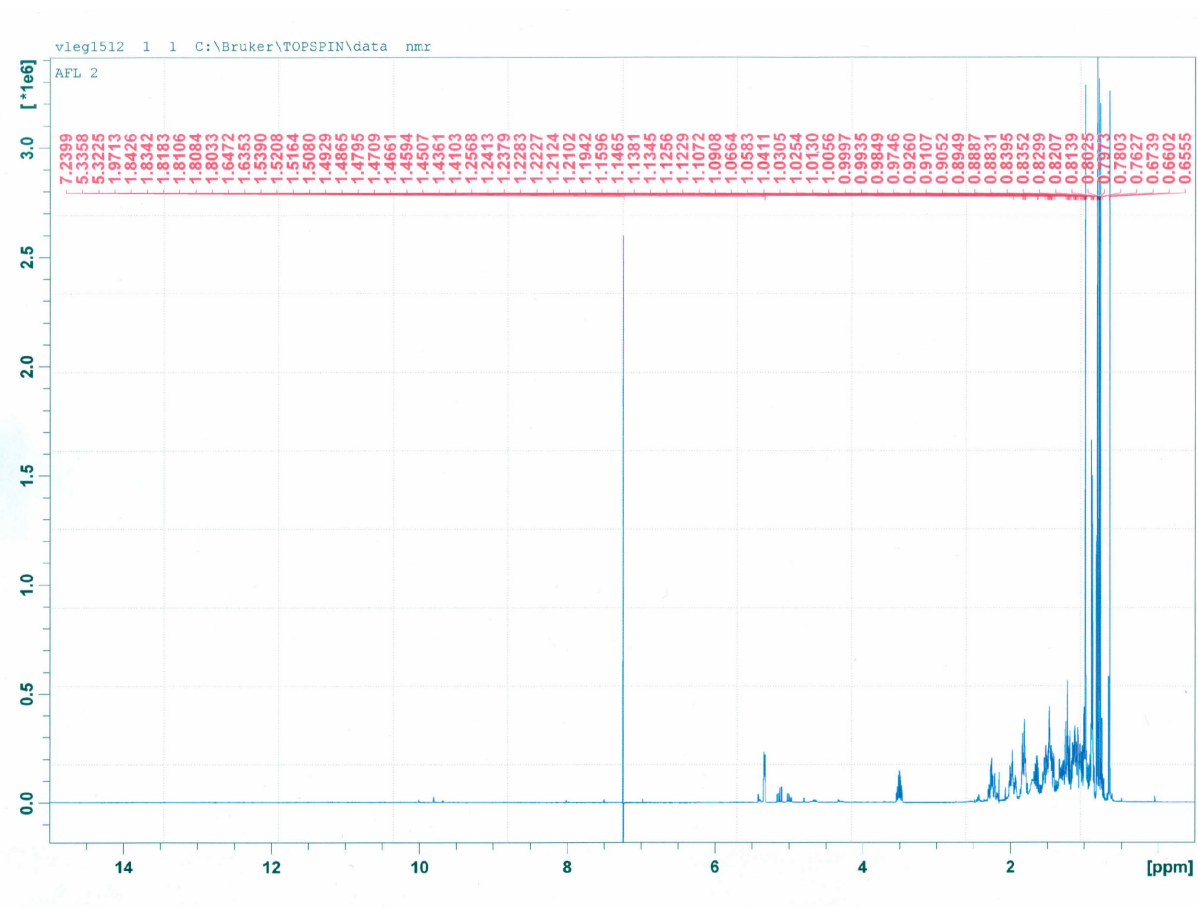


Figure S3:  $^{13}\text{C}$ -NMR (125 MHz,  $\text{CDCl}_3$ ) of stigmasterol



**Figure S4:**  $^1\text{H}$ -NMR (500 MHz,  $\text{CDCl}_3$ ) Spectrum of Stigmasterol

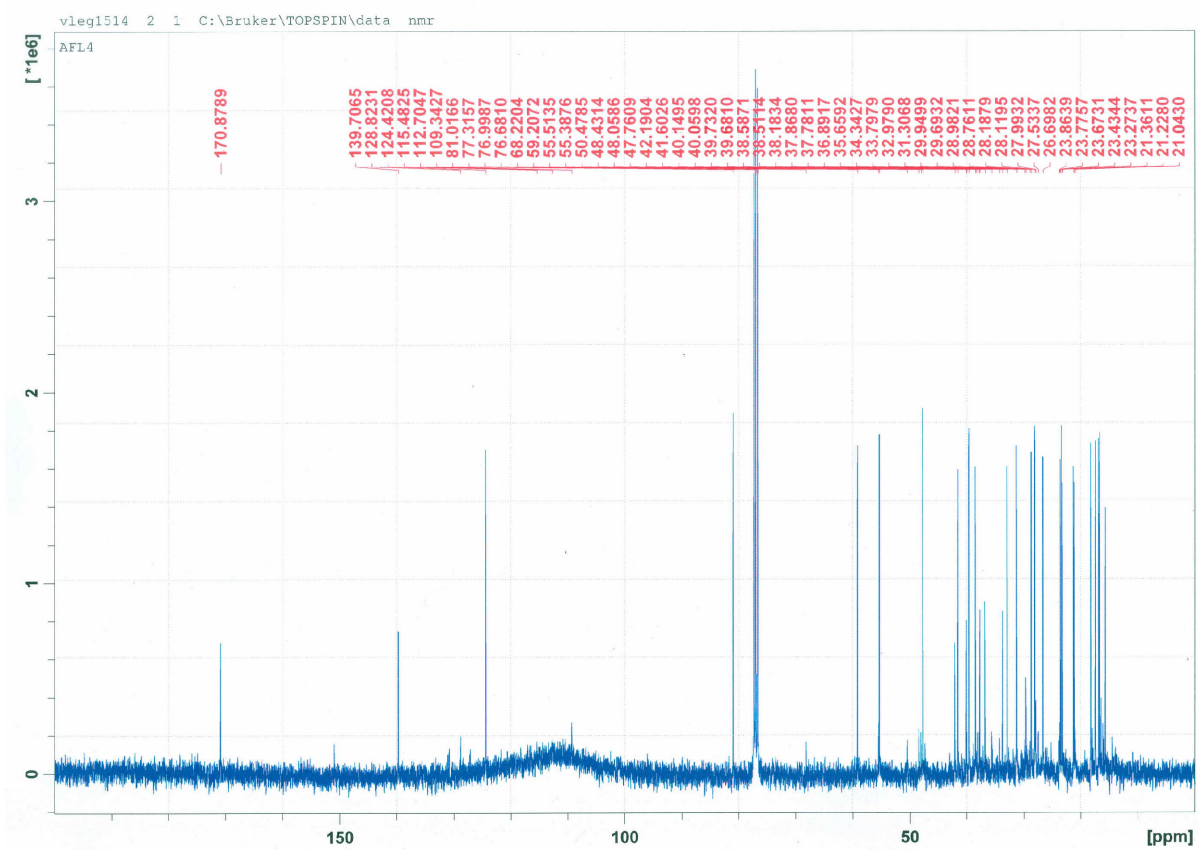
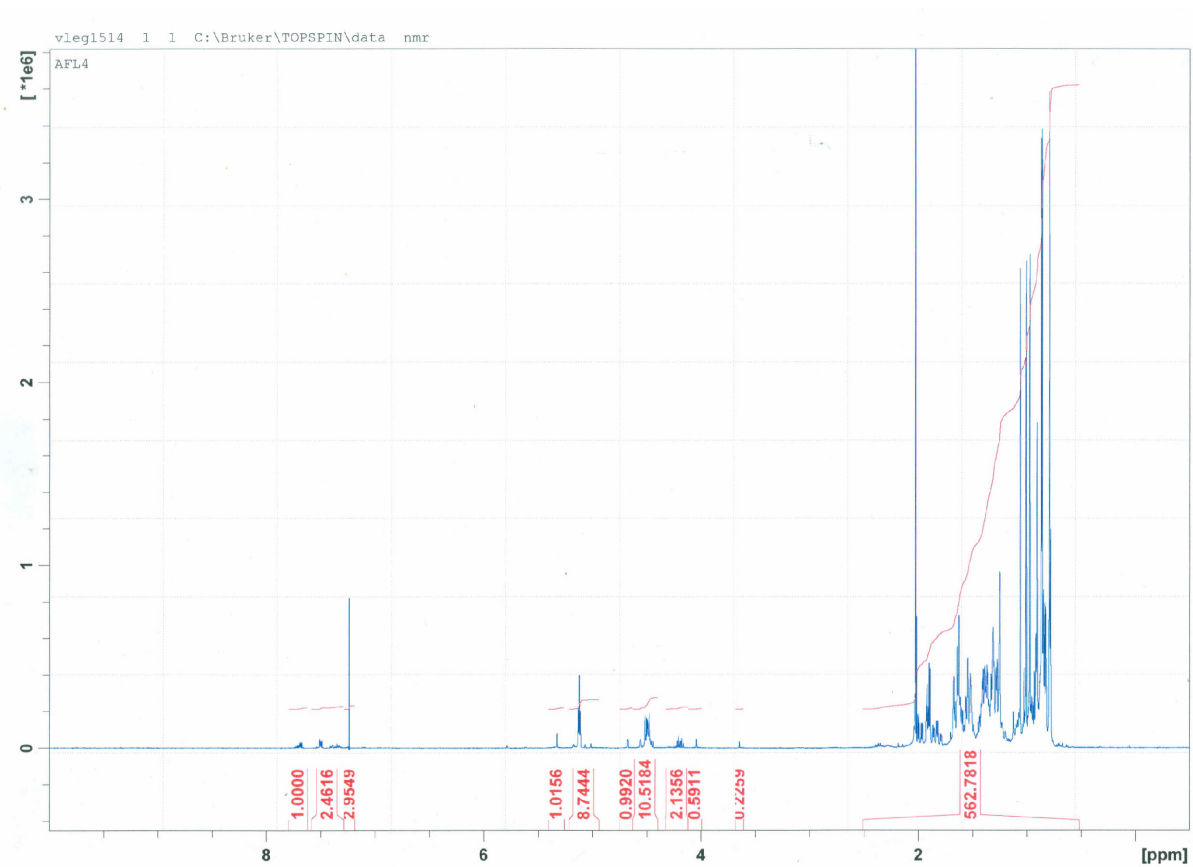
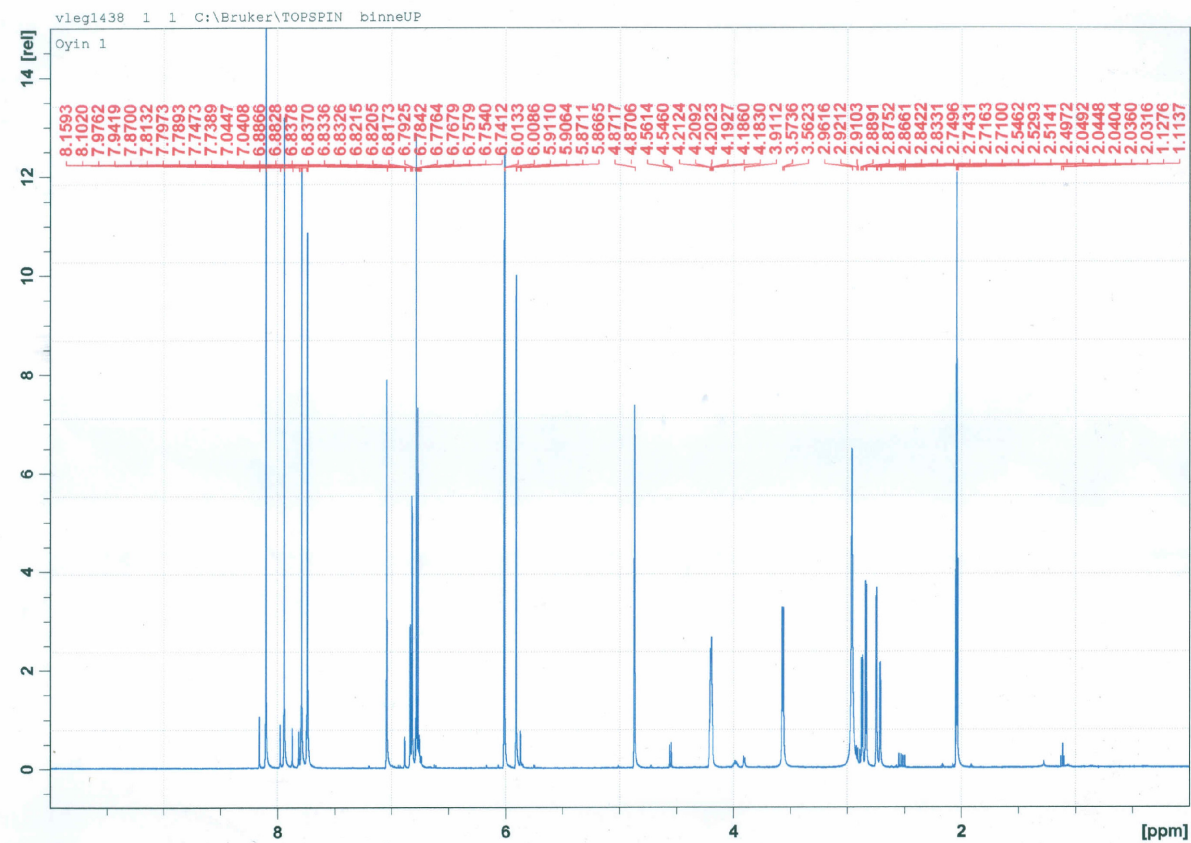


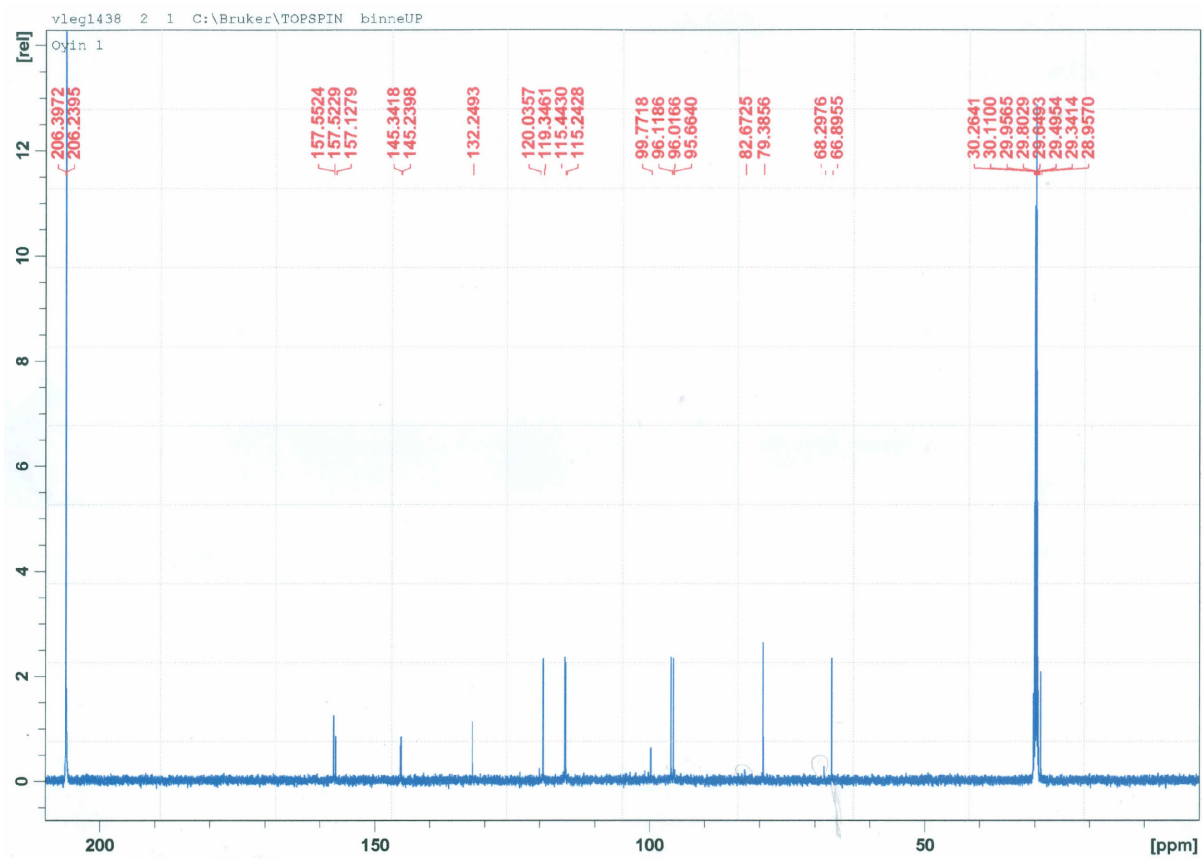
Figure S5:  $^{13}\text{C}$ -NMR (125 MHz,  $\text{CDCl}_3$ ) Spectrum of  $\alpha$ -amyrin acetate



**Figure S6:**  $^1\text{H}$  NMR (500 MHz,  $\text{CDCl}_3$ ) Spectrum of  $\alpha$ -amyrin acetate



**Figure S7:** <sup>1</sup>H NMR (500 MHz, CDCl<sub>3</sub>) Spectrum of Epicatechin



**Figure S8:**  $^{13}\text{C}$ -NMR (125 MHz,  $\text{CDCl}_3$ ) Spectrum of Epicatechin (**4**)