

Supporting information

A High-Efficiency Deep Blue Emitter for OLEDs with a New Dual-Core Structure Incorporating ETL Characteristics

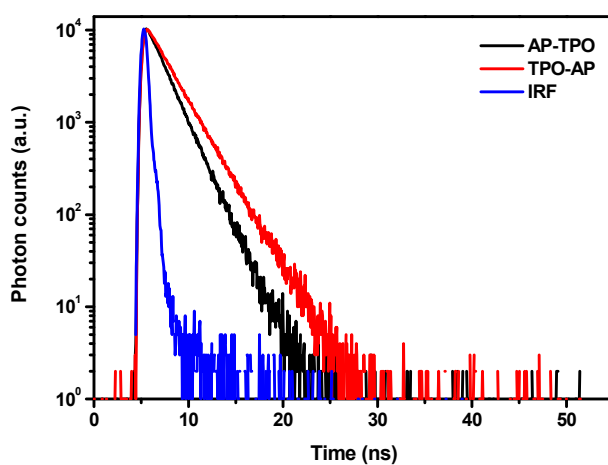


Figure S1. TRPL curves of AP-TPO and TPO-AP.

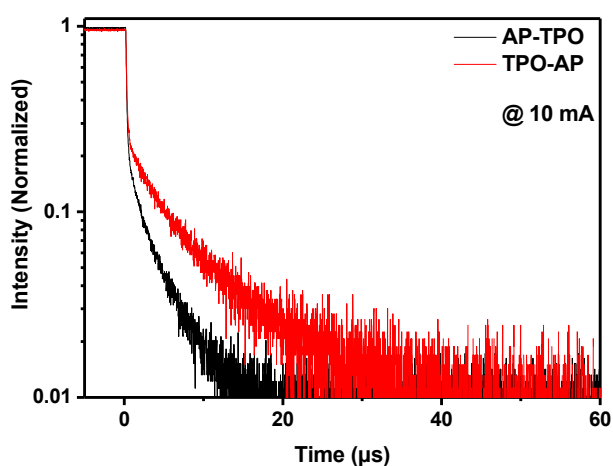


Figure S2. Transient EL responses of AP-TPO and TPO-AP.

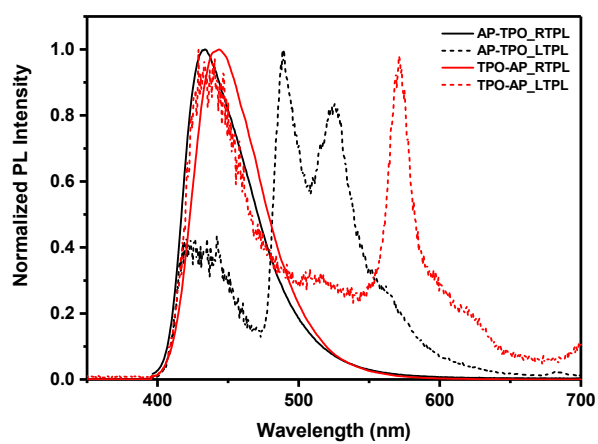


Figure S3. RTPL and LTPL (77K) in solution state AP-TPO and TPO-AP.

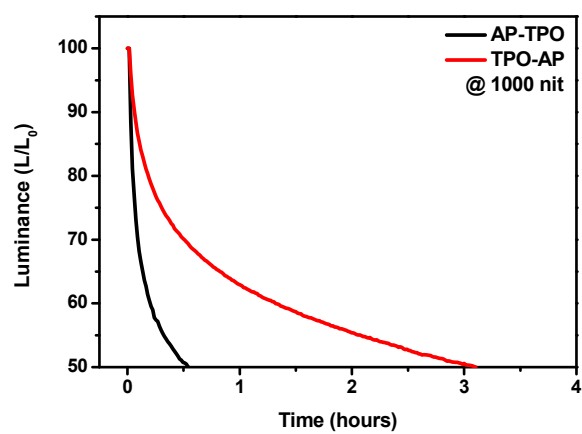


Figure S4. Device lifetime at 1000 nits of AP-TPO and TPO-AP.

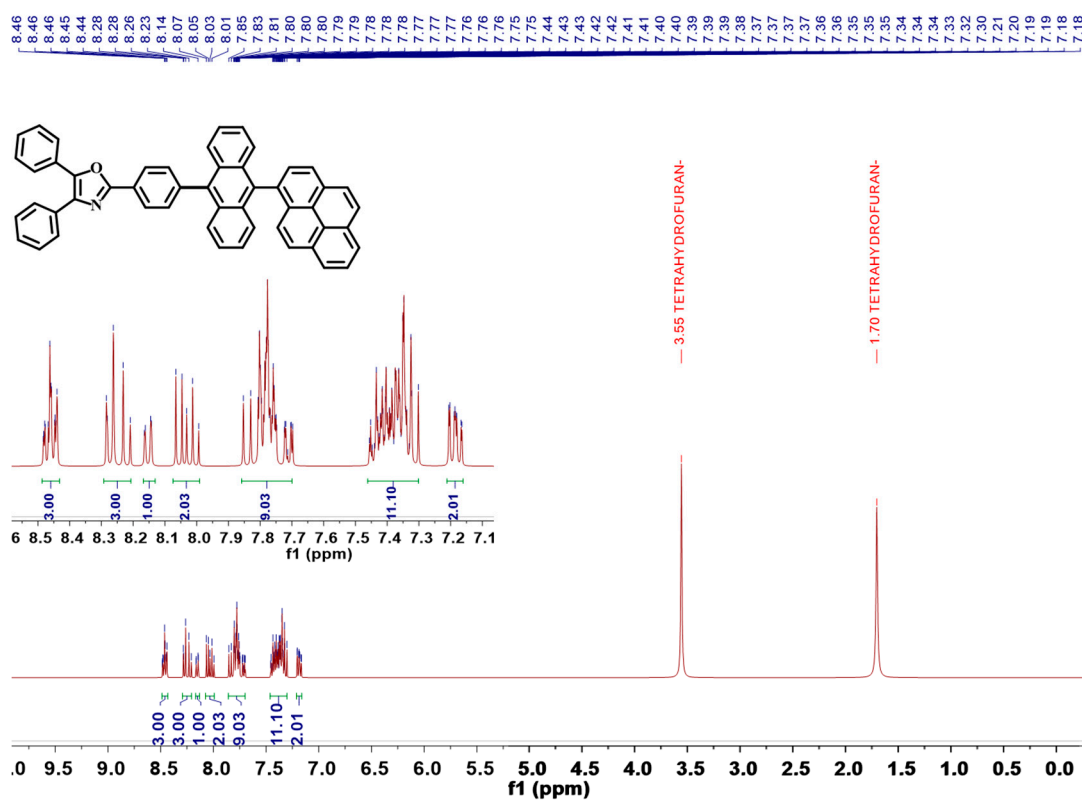


Figure S7. ¹H NMR spectra of compound (6) in THF.

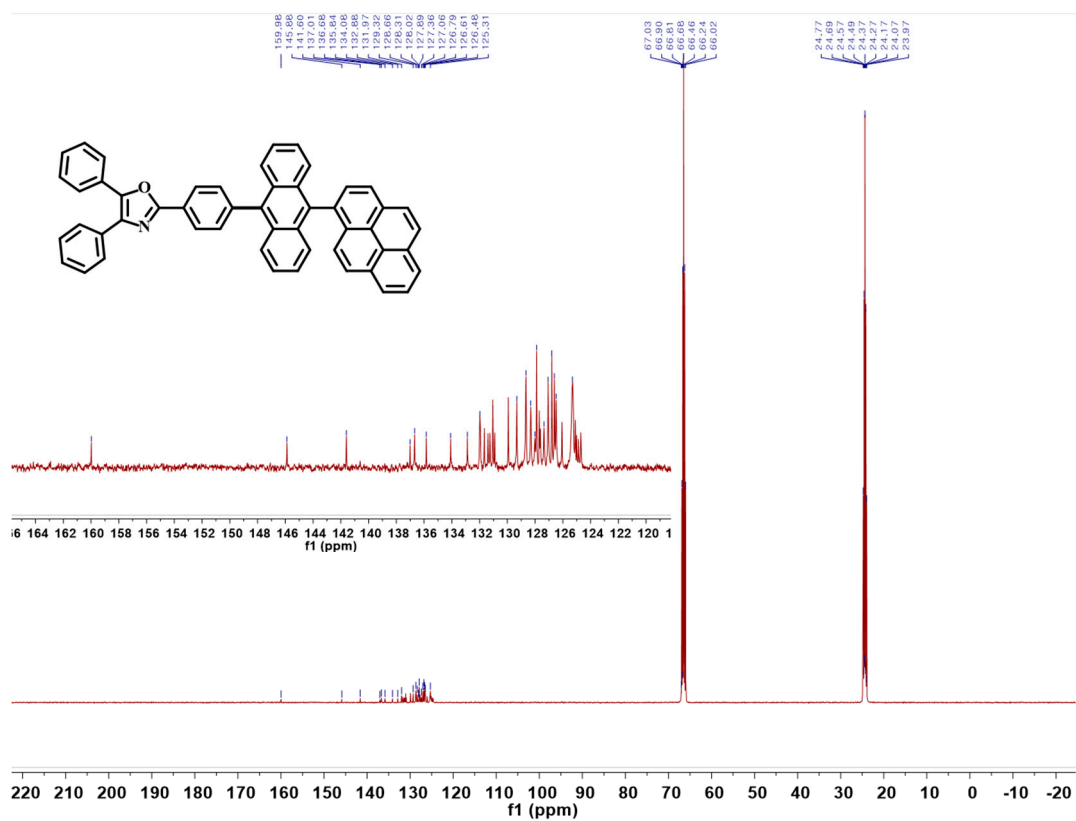


Figure S8. ¹³C NMR spectra of compound (6) in THF.