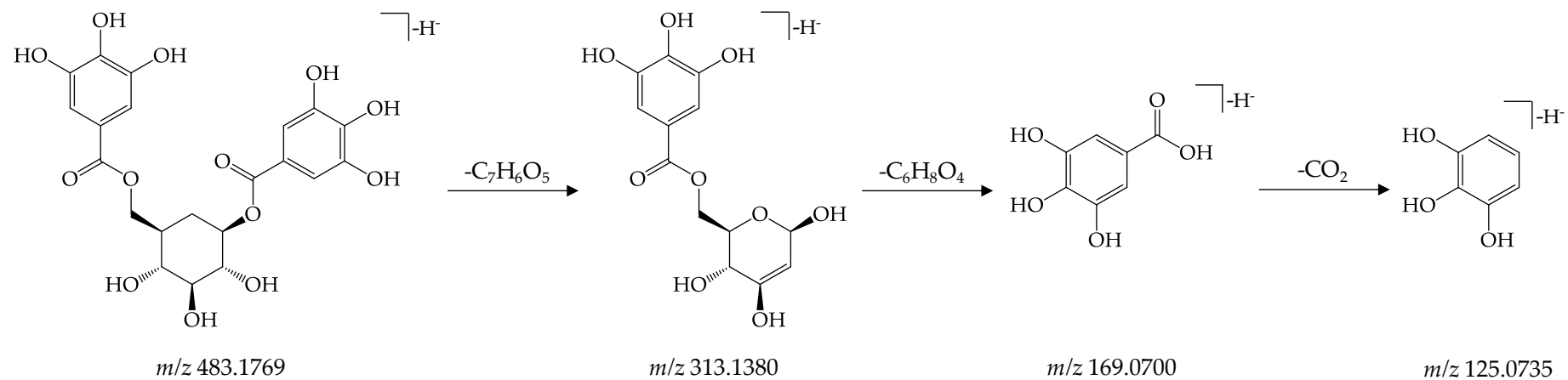


1,6-di-O-galloyl-D-glucose



polydatin

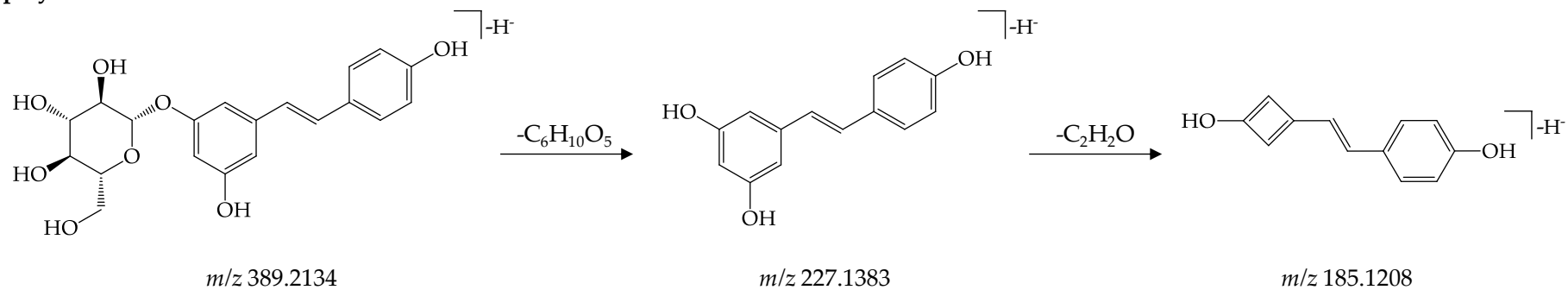
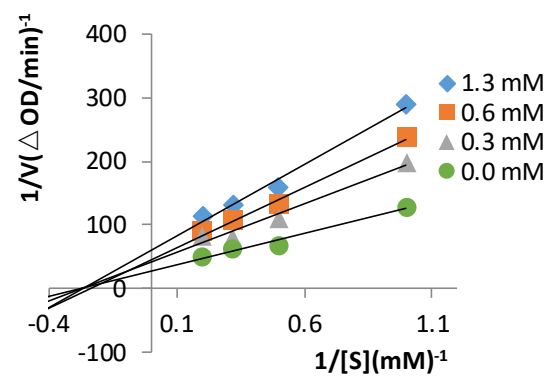
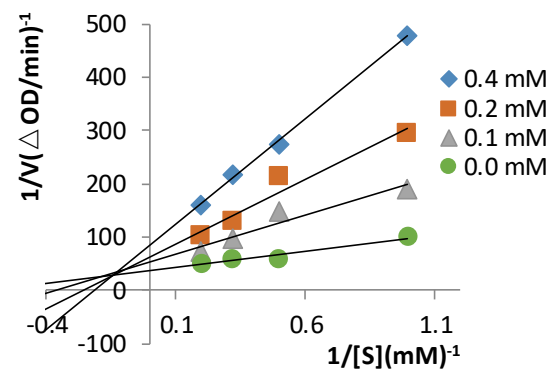


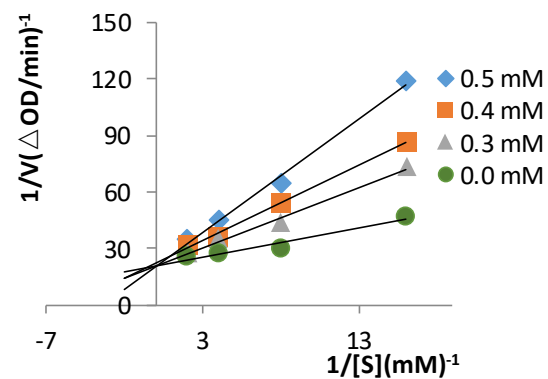
Figure S1 Fragmentation pathway of 1,6-di-O-galloyl-D-glucose and polydatin



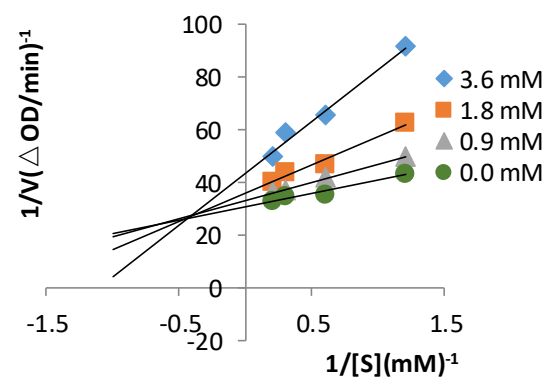
Methylgallate-TYR



Polydatin-TYR



Polydatin-XOD



Polydatin- α -GLU

Figure S2 Lineweaver-Burk plots of methylgallate and polydatin on the activity of three enzymes.