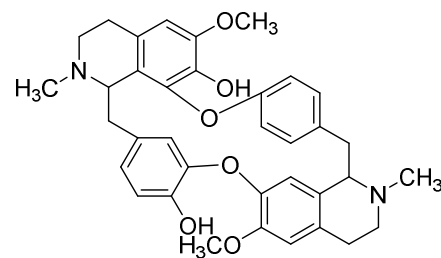
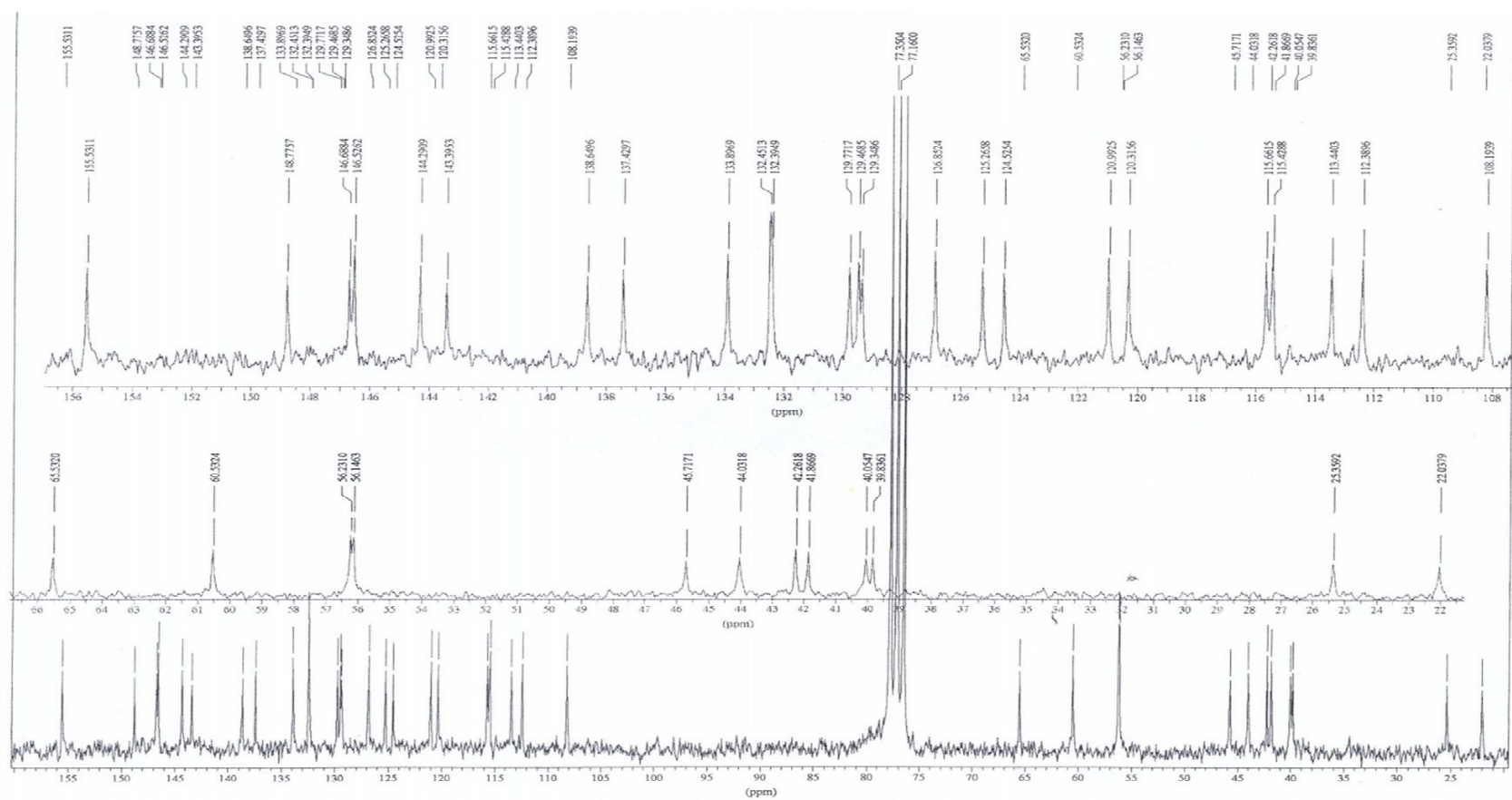


Supplementary data

Curine (A)

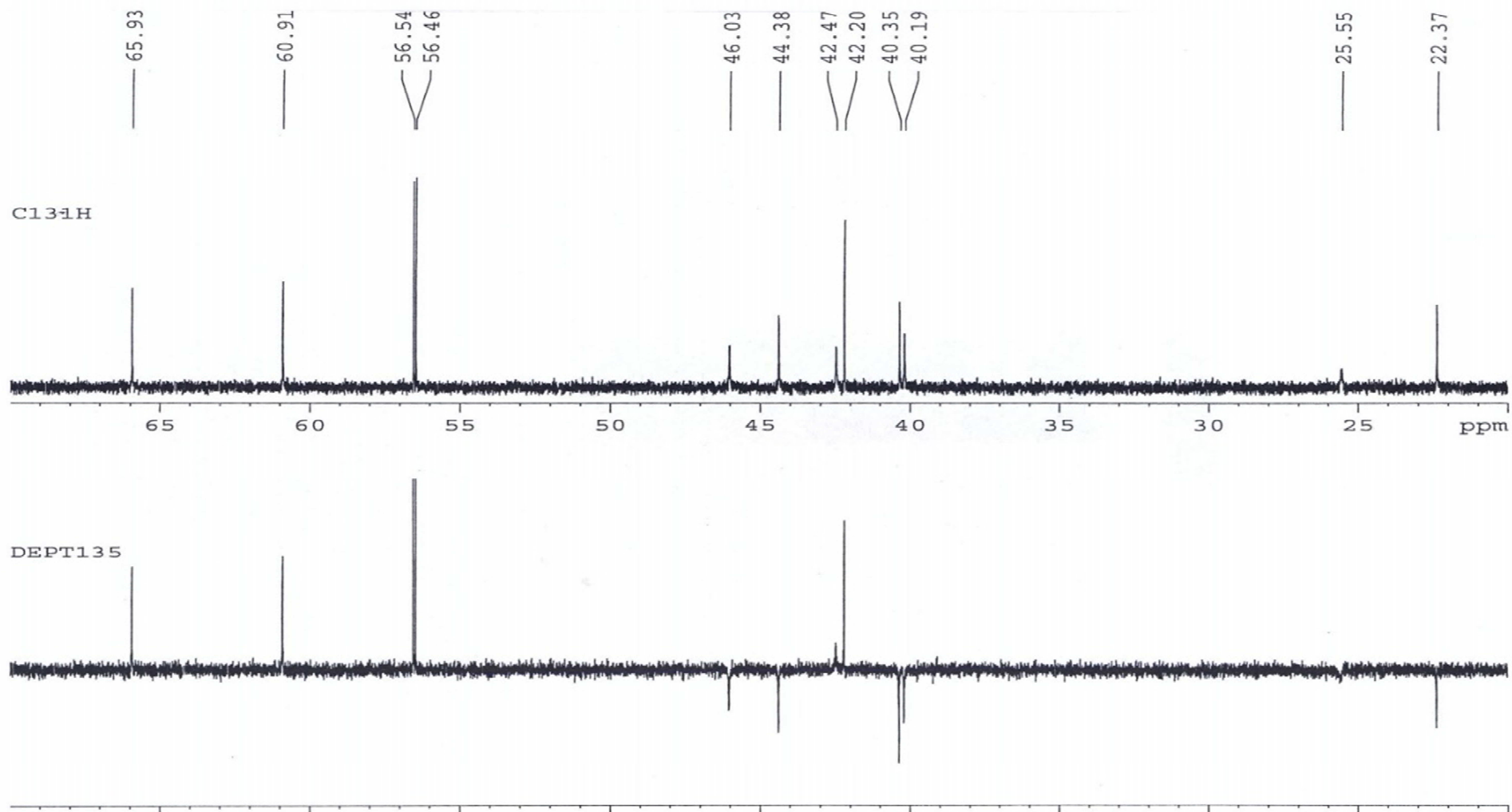


Curine - ^{13}C NMR (125 MHz, CDCl_3)



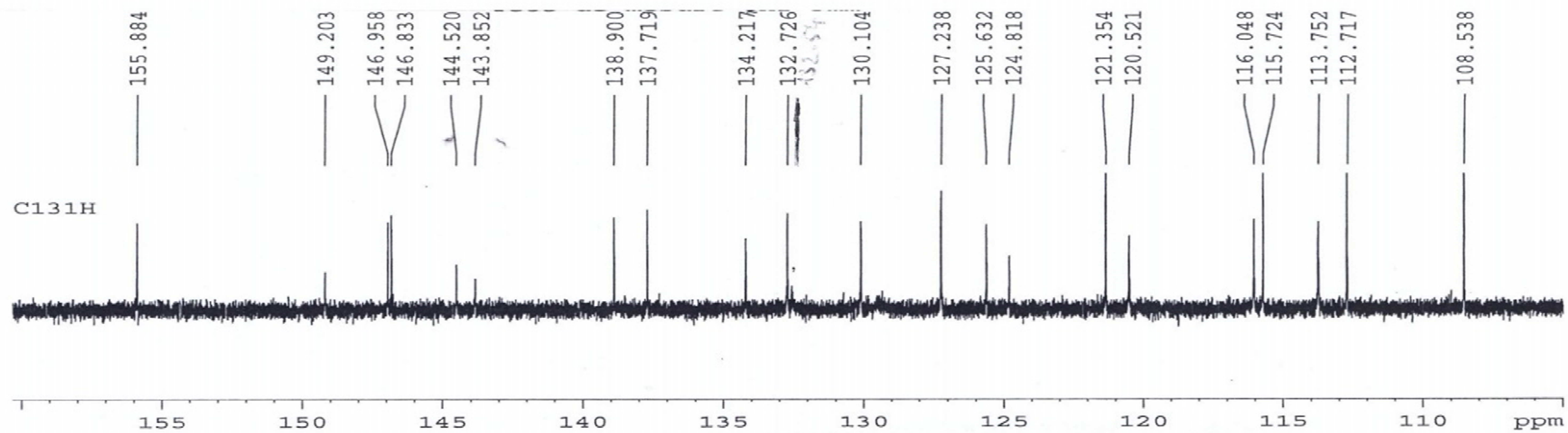
Curine - ^{13}C NMR (125 MHz, CDCl_3) and DEPT 135°

Curine Zone (0 – 70 ppm)

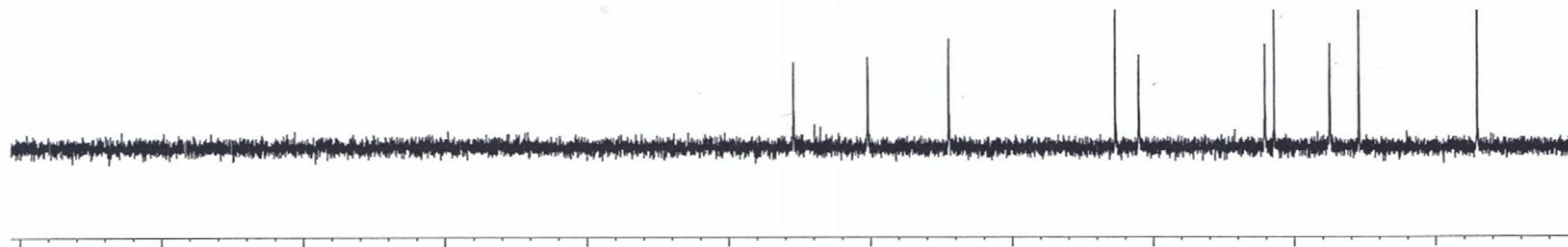


Curine

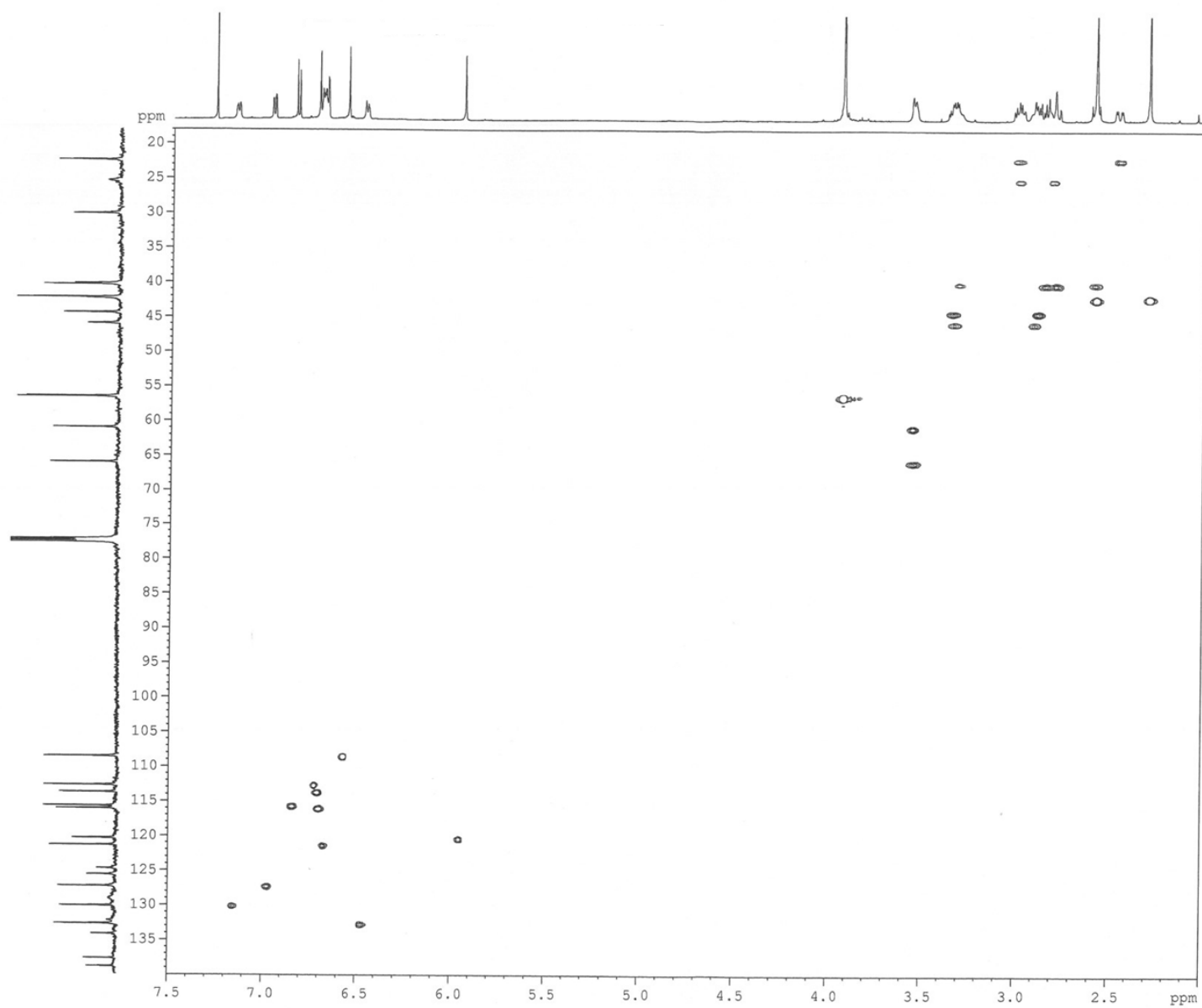
Zone (100-160 ppm)



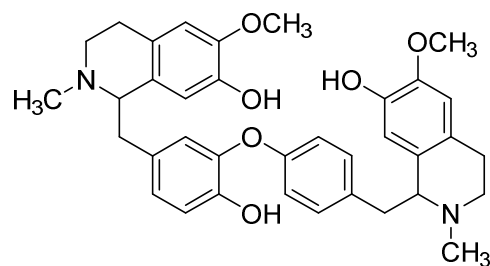
DEPT135



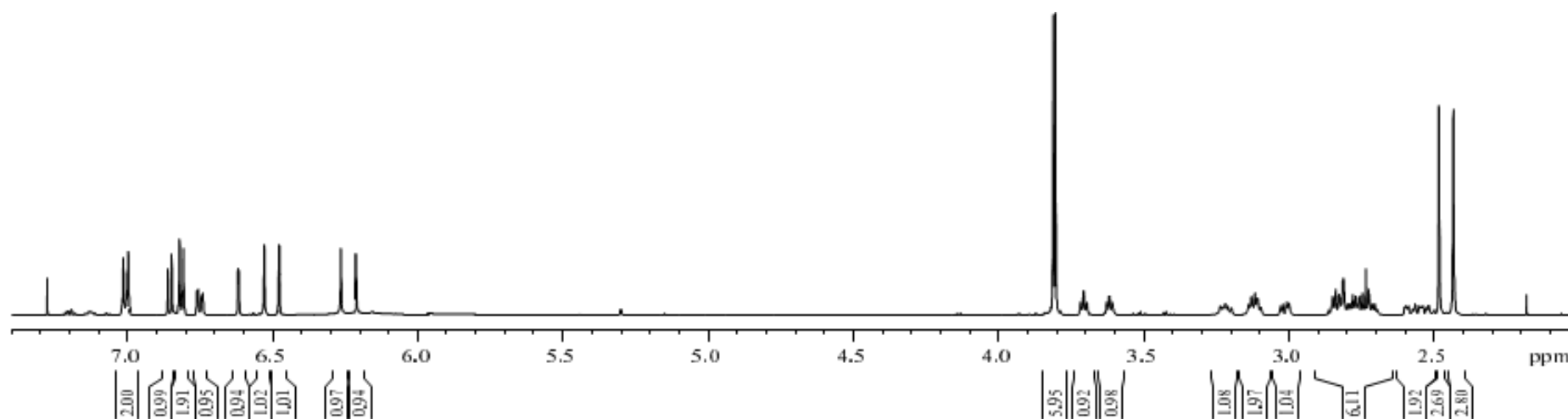
Curine - ^{13}C - ^1H correlations in HSQC NMR, CDCl_3



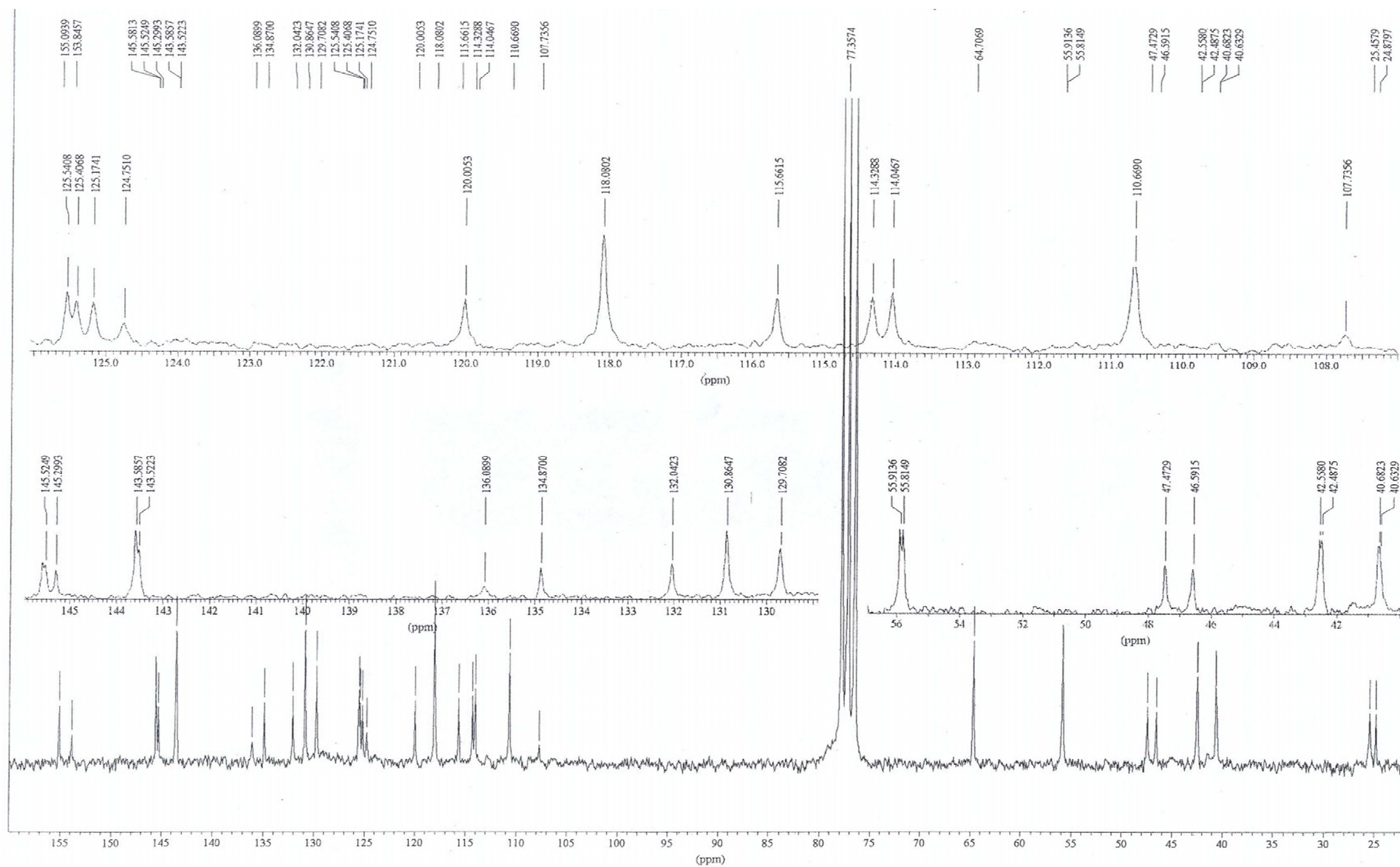
Guattegaumerine (B)



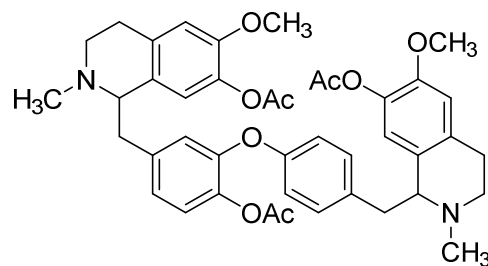
Guattegaumerine - ^1H NMR (500 MHz, CDCl_3)



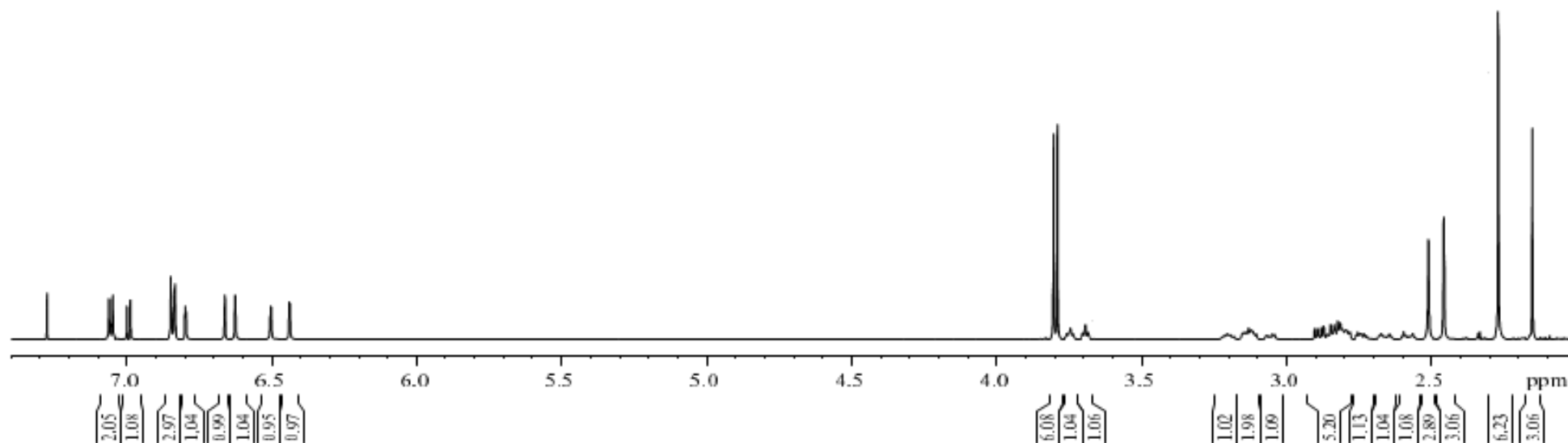
Guattegaumerine - ^{13}C NMR (125 MHz, CDCl_3)



Triacetylguattegaumerine (C)



Triacetylguattegaumerine ^1H -NMR (500MHz, CDCl_3)



Triacetylguattegaumerine ^{13}C -NMR (125MHz, CDCl_3) and DEPT 135°

