

Supplementary Materials

***trans*-Dichloro(triphenylarsino)(*N,N*-dialkylamino)platinum(II) Complexes: In Search of New Scaffolds to Circumvent Cisplatin Resistance**

Mariafrancesca Hyeraci ^{1,†}, Laura Agnarelli ^{2,†}, Luca Labella ^{2,3}, Fabio Marchetti ², Maria Luisa Di Paolo ⁴, Simona Samaritani ^{2,3} and Lisa Dalla Via ^{1,*}

¹ Department of Pharmaceutical and Pharmacological Sciences, Università degli Studi di Padova, Via F. Marzolo, 5, 35131 Padova, Italy; mariafrancesca.hyeraci@studenti.unipd.it (M.H.); lisa.dallavia@unipd.it (L.D.V.)

² Department of Chemistry and Industrial Chemistry, University of Pisa, Via G. Moruzzi 13, 56124 Pisa, Italy; laura.agnarelli@cpfs.mpg.de (L.A.); luca.labella@unipi.it (L.L.); fabio.marchetti1950@unipi.it (F.M.); simona.samaritani@unipi.it (S.S.)

³ CISUP-Center for the Integration of Scientific Instruments, University of Pisa, 56126 Pisa, Italy
⁴ Department of Molecular Medicine, Università degli Studi di Padova, Via G. Colombo, 3, 35131 Padova, Italy; marialuisa.dipaolo@unipd.it

* Correspondence: lisa.dallavia@unipd.it; Tel.: +39-049-8275712

† These authors contributed equally to this work.

Figure S1. ¹H NMR spectrum of *cis,trans*-[PtCl₂(AsPh₃)(NCMe)].

Figure S2. ¹⁹⁵Pt NMR spectrum of *cis,trans*-[PtCl₂(AsPh₃)(NCMe)].

Figure S3. ¹H NMR spectrum of **1**.

Figure S4. ¹³C NMR spectrum of **1**.

Figure S5. ¹⁹⁵Pt NMR spectrum of **1**.

Figure S6. ¹H NMR spectrum of **2**.

Figure S7. ¹³C NMR spectrum of **2**.

Figure S8. ¹⁹⁵Pt NMR spectrum of **2**.

Figure S9. ¹H NMR spectrum of **1** in DMSO-d₆ solution after 24 h. Aromatic portion is omitted.

Figure S10. Dot plots from a representative experiment of A2780cis cells incubated with complex **1** and loaded with JC-1. A2780cis cells were incubated for 40 h with complex **1** or cisplatin (cisPt) at indicated concentrations. Percentages of cells with high (Q2) and low (Q4) mitochondrial membrane potential, are reported.

Figure S11. Dot plots from a representative experiment of A2780 cells incubated with complex **1** and loaded with JC-1. A2780 cells were incubated for 40 h with complex **1** at 5 μM concentration. Percentages of cells with high (Q2) and low (Q4) mitochondrial membrane potential, are reported.

Figure S12. Dot plots from a representative experiment of A2780cis cells incubated with complex **1** and loaded with Annexin V-FITC and propidium iodide. A2780cis cells were incubated for 40 h with complex **1** at indicated concentrations. Percentages of viable (Q3), apoptotic (Q2+Q4) and necrotic (Q1) A2780cis are reported.

Figure S13. Dot plots from a representative experiment of A2780 cells incubated with complex **1** and loaded with Annexin V-FITC and propidium iodide. A2780 cells were incubated for 40 h with complex **1** at 10⁻⁶ M concentration. Percentages of viable (Q3), apoptotic (Q2+Q4) and necrotic (Q1) A2780cis are reported.

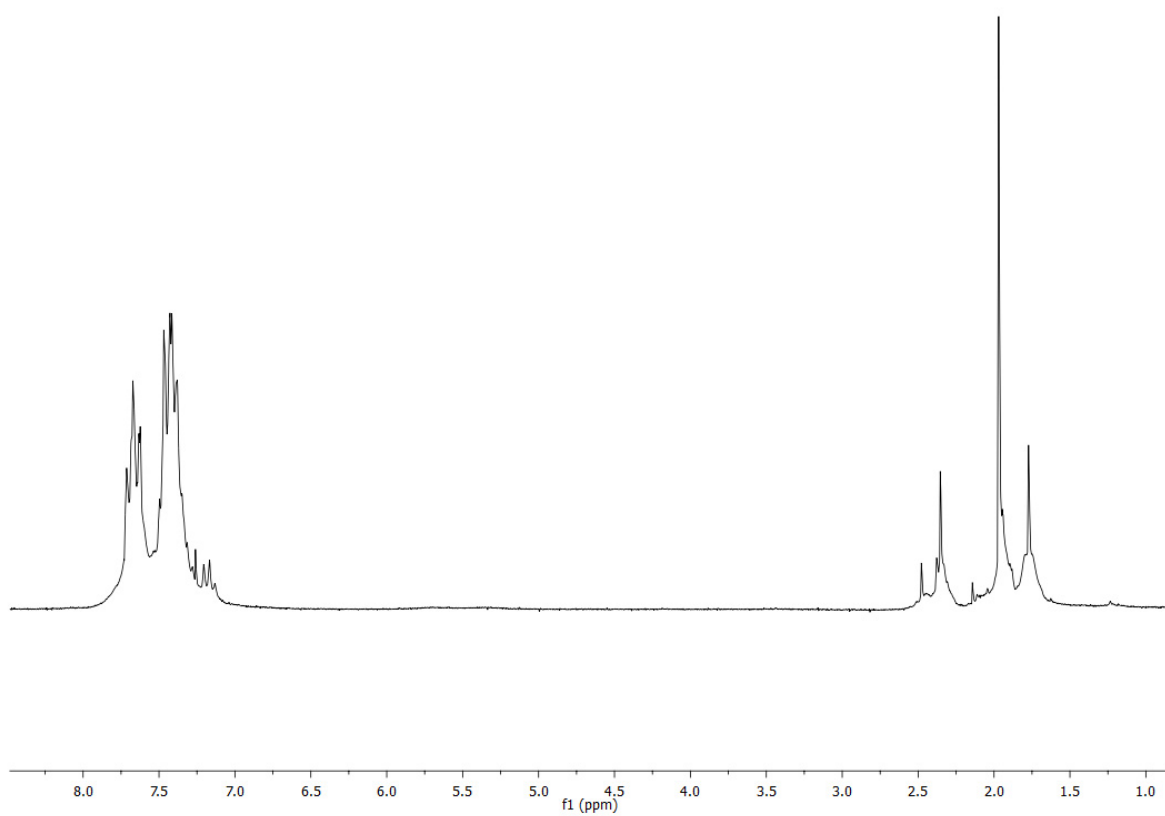


Figure S1. ^1H NMR spectrum of *cis,trans*-[PtCl₂(AsPh₃)(NCMe)].

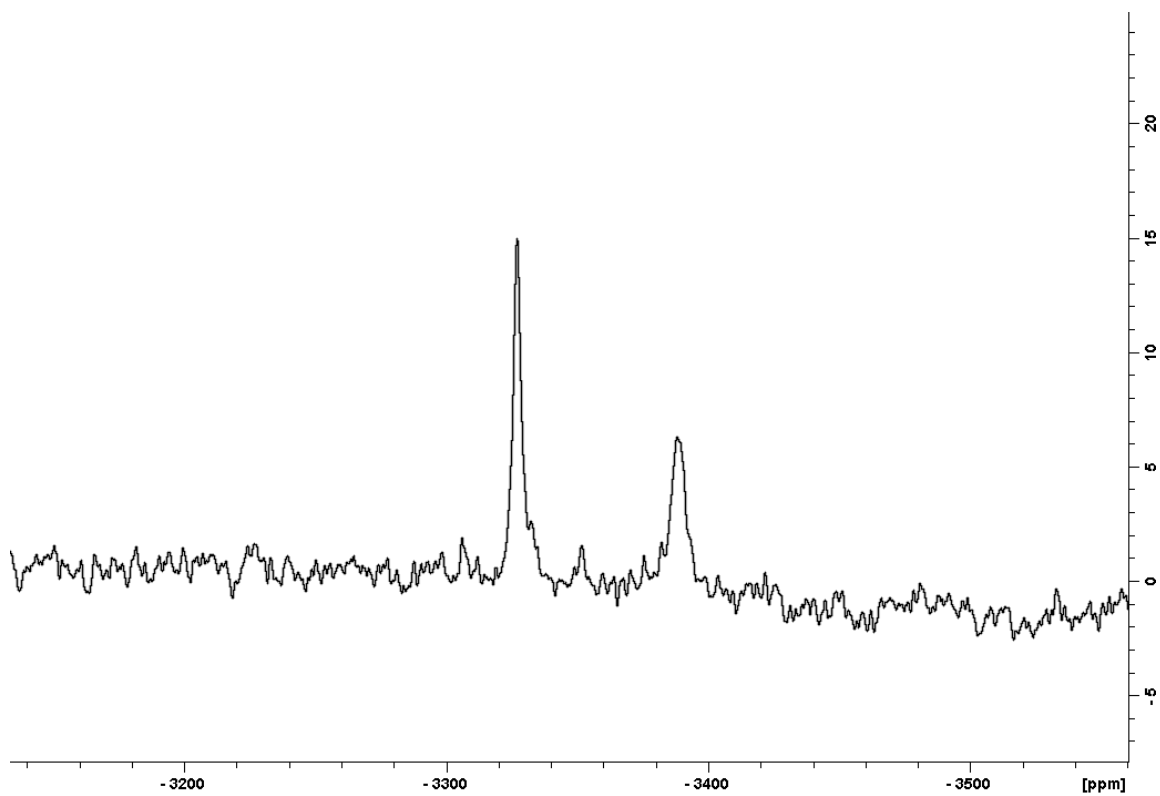


Figure S2. ^{195}Pt NMR spectrum of *cis,trans*-[PtCl₂(AsPh₃)(NCMe)].

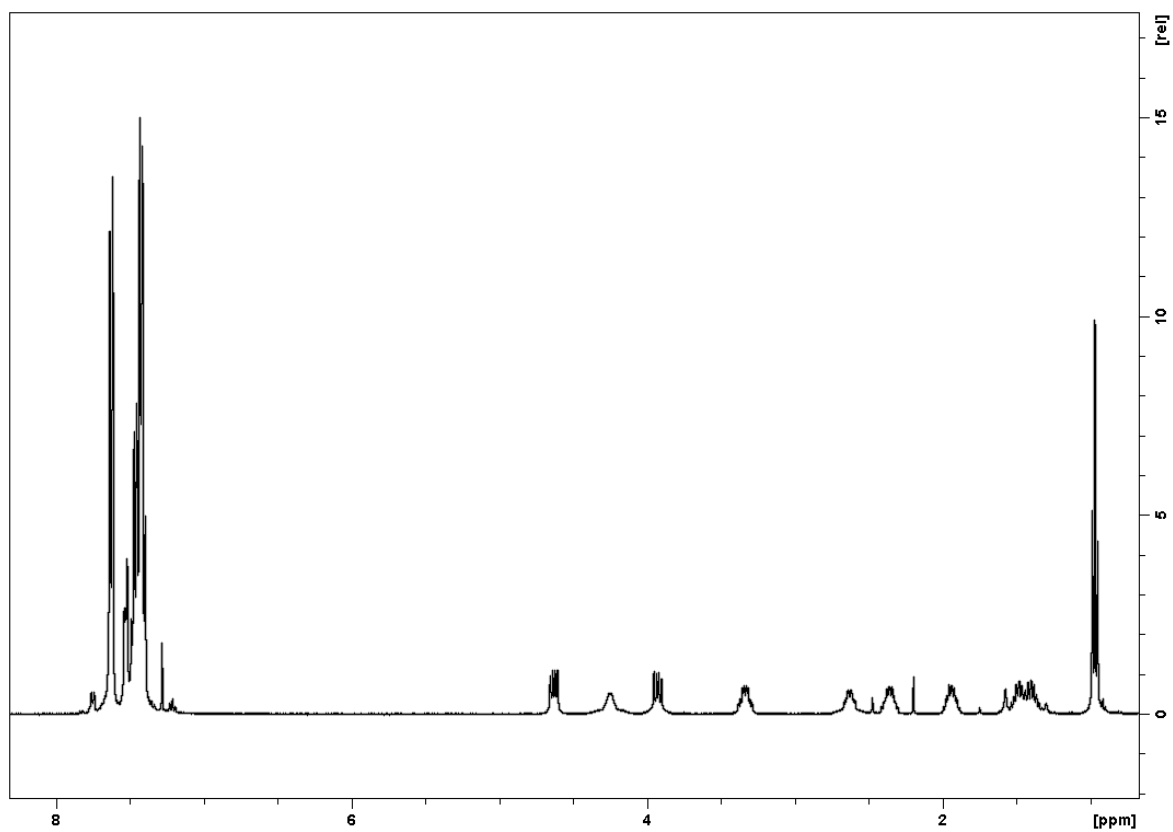


Figure S3. ^1H NMR spectrum of **1**.

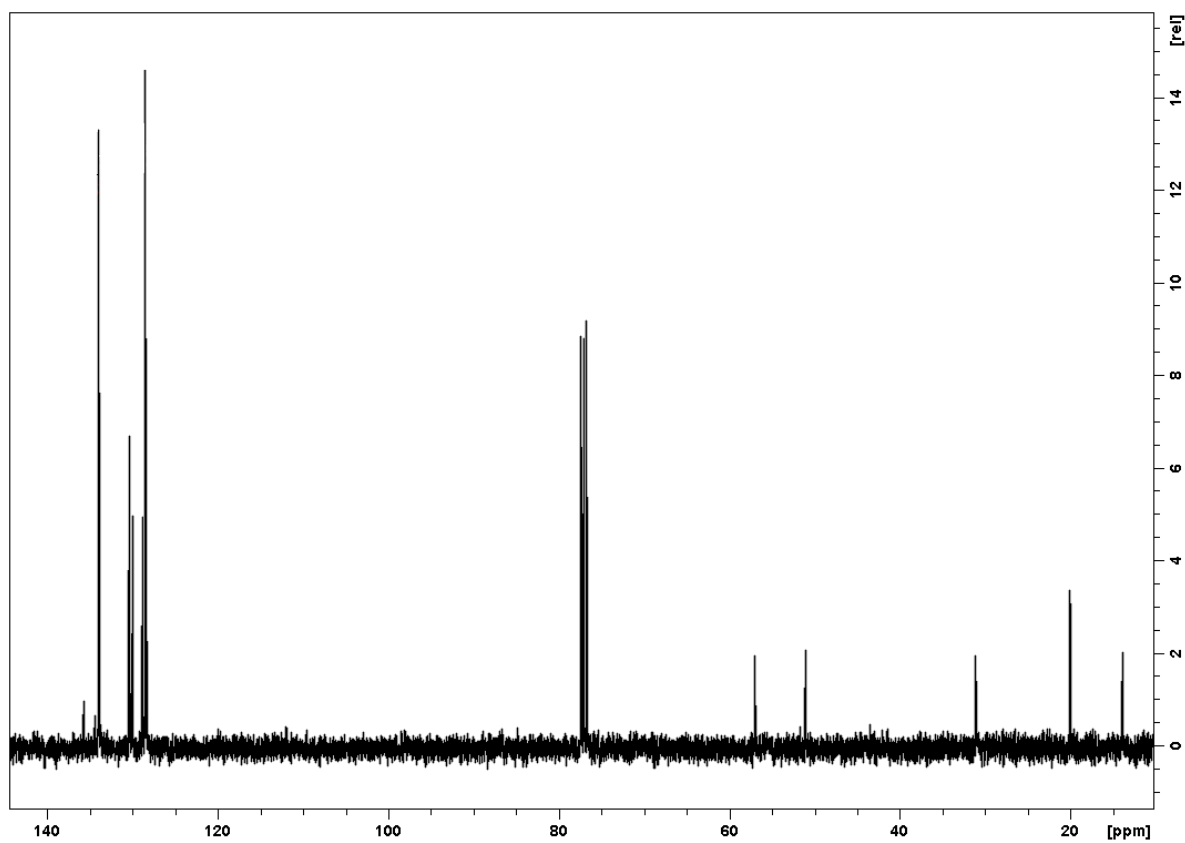


Figure S4. ^{13}C NMR spectrum of **1**.

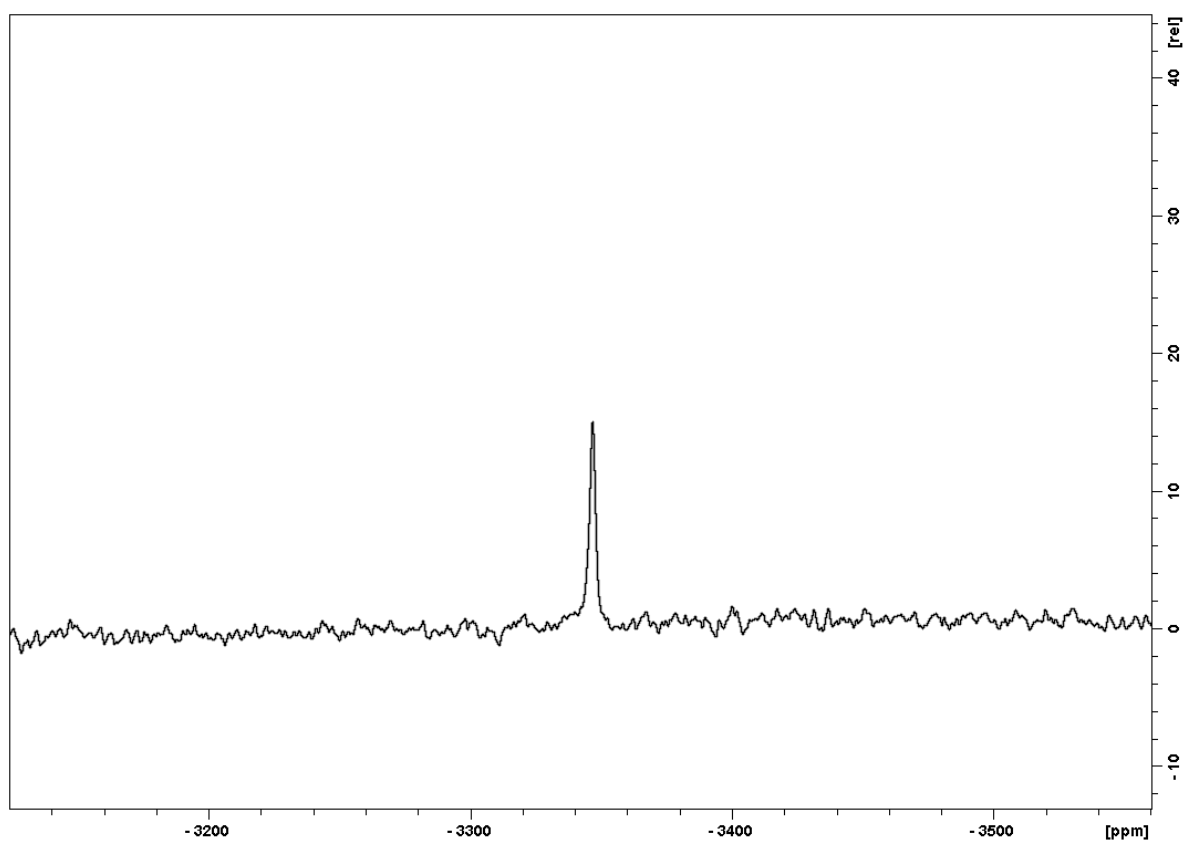


Figure S5. ^{195}Pt NMR spectrum of **1**.

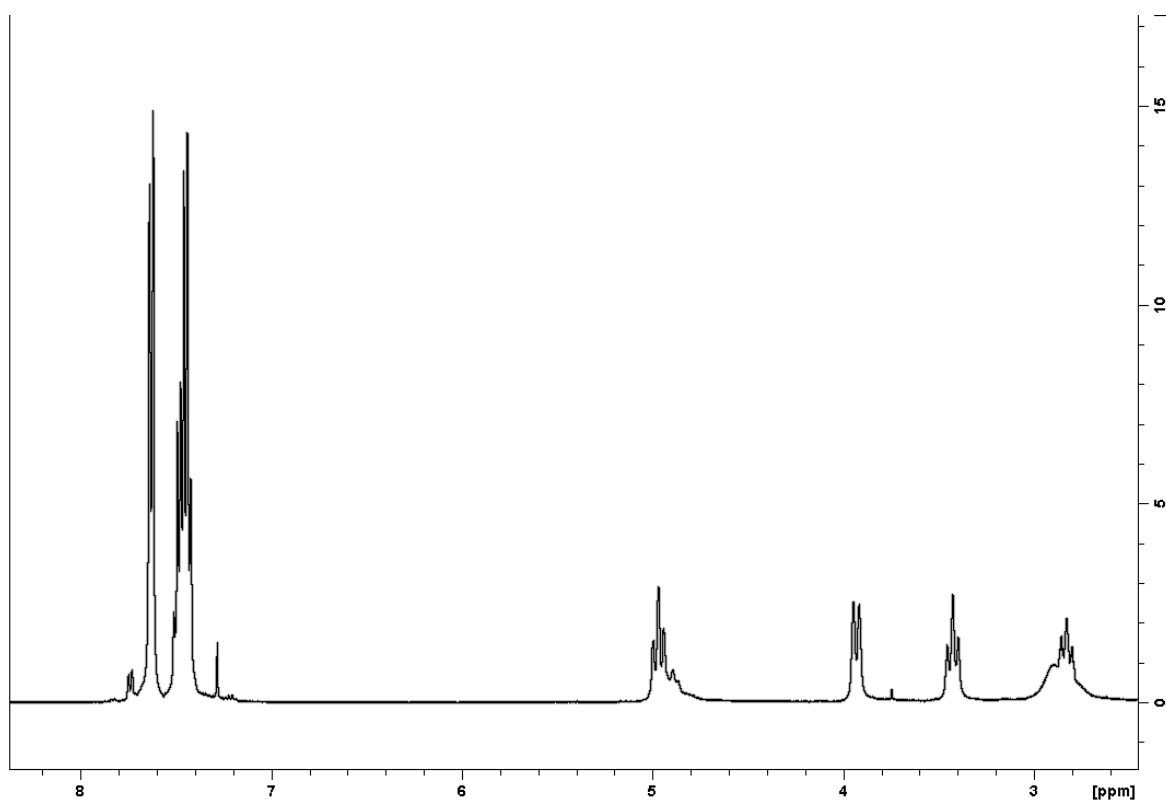


Figure S6. ^1H NMR spectrum of **2**.

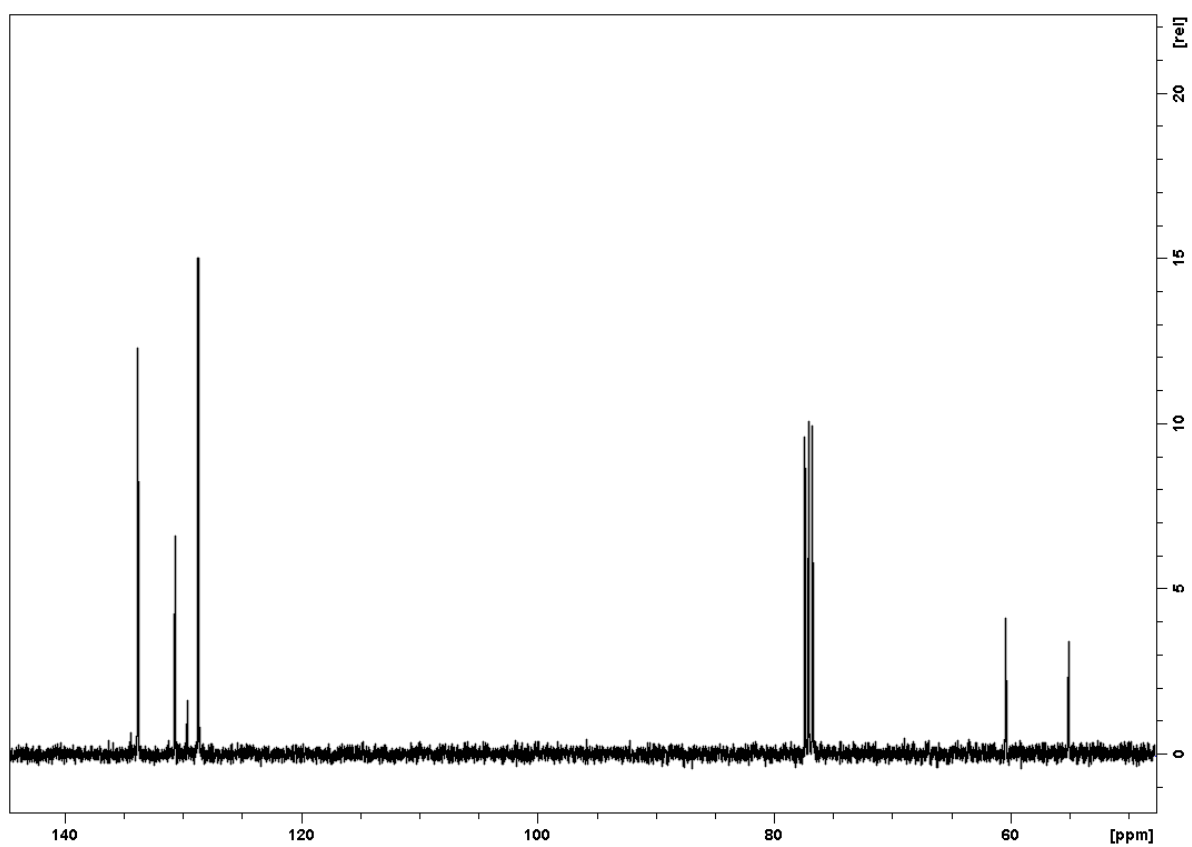


Figure S7. ^{13}C NMR spectrum of 2.

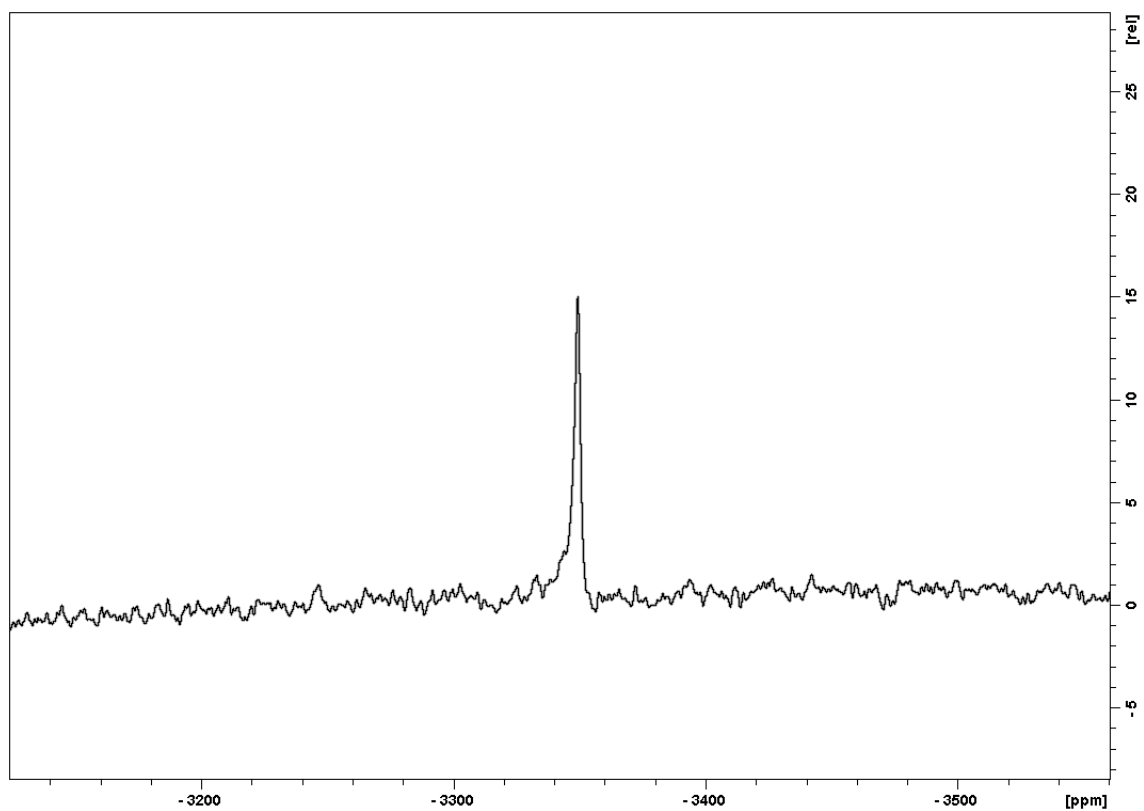


Figure S8. ^{195}Pt NMR spectrum of 2.

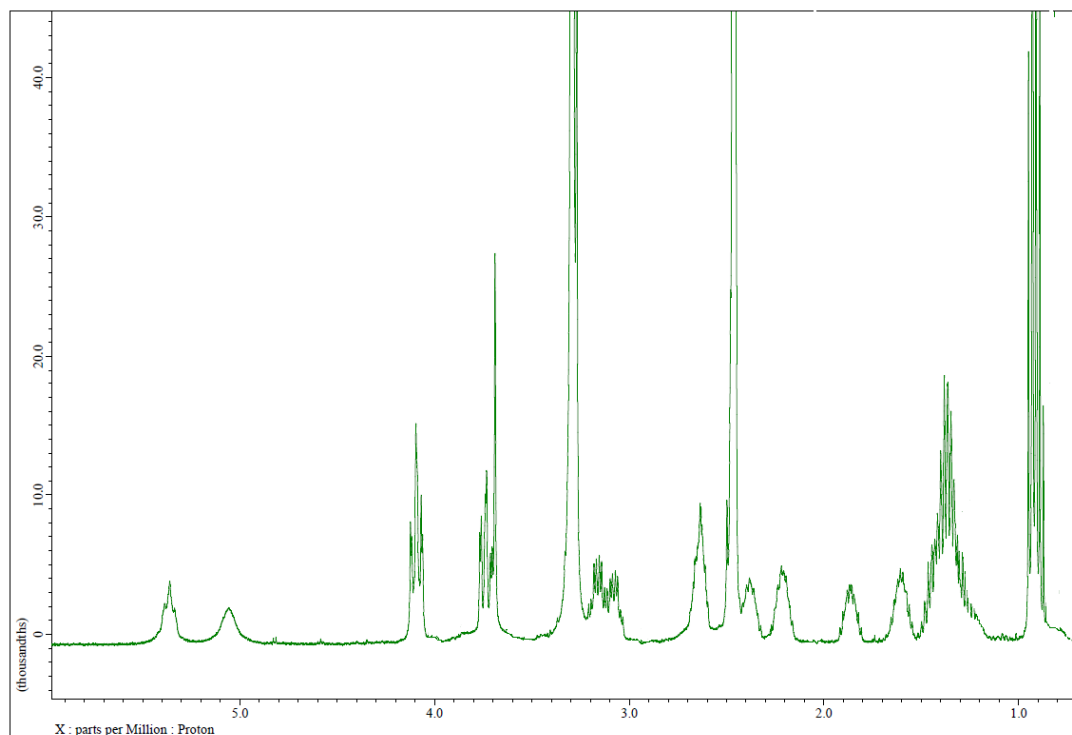


Figure S9. ^1H NMR spectrum of **1** in DMSO- d_6 solution after 24 h. Aromatic portion is omitted.

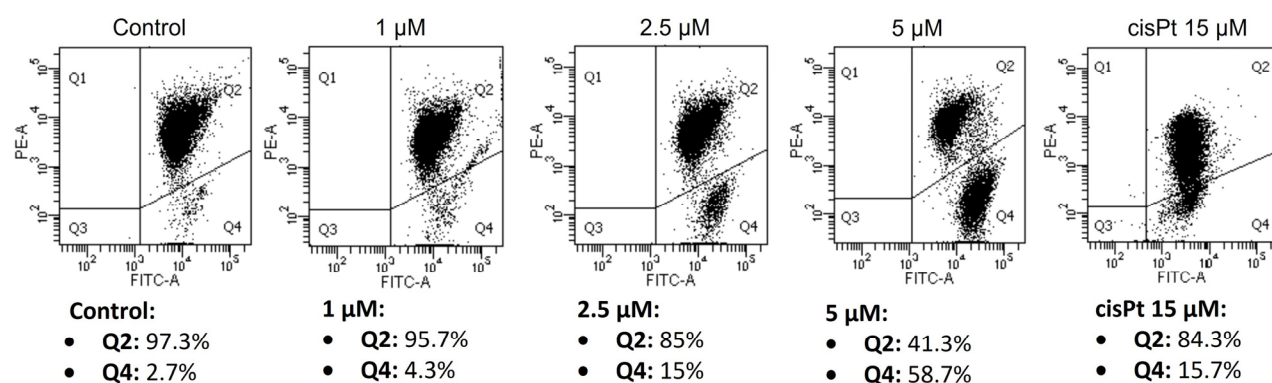


Figure S10. Dot plots from a representative experiment of A2780cis cells incubated with complex **1** and loaded with JC-1. A2780cis cells were incubated for 40 h with complex **1** or cisplatin (cisPt) at indicated concentrations. Percentages of cells with high (Q2) and low (Q4) mitochondrial membrane potential, are reported.

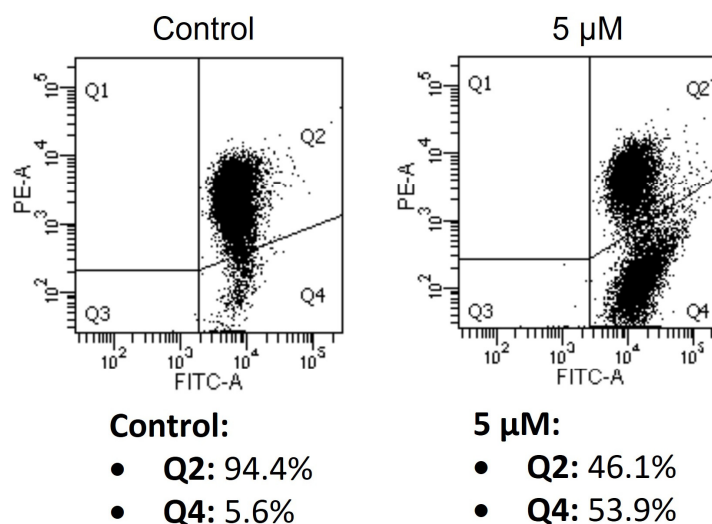


Figure S11. Dot plots from a representative experiment of A2780 cells incubated with complex 1 and loaded with JC-1. A2780 cells were incubated for 40 h with complex 1 at 5 μM concentration. Percentages of cells with high (Q2) and low (Q4) mitochondrial membrane potential, are reported.

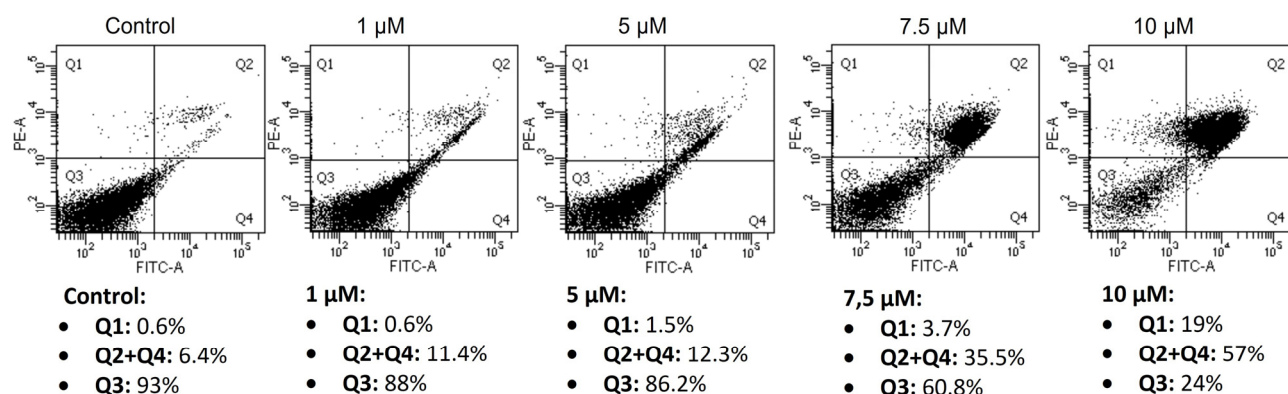


Figure S12. Dot plots from a representative experiment of A2780cis cells incubated with complex 1 and loaded with Annexin V-FITC and propidium iodide. A2780cis cells were incubated for 40 h with complex 1 at indicated concentrations. Percentages of viable (Q3), apoptotic (Q2+Q4) and necrotic (Q1) A2780cis are reported.

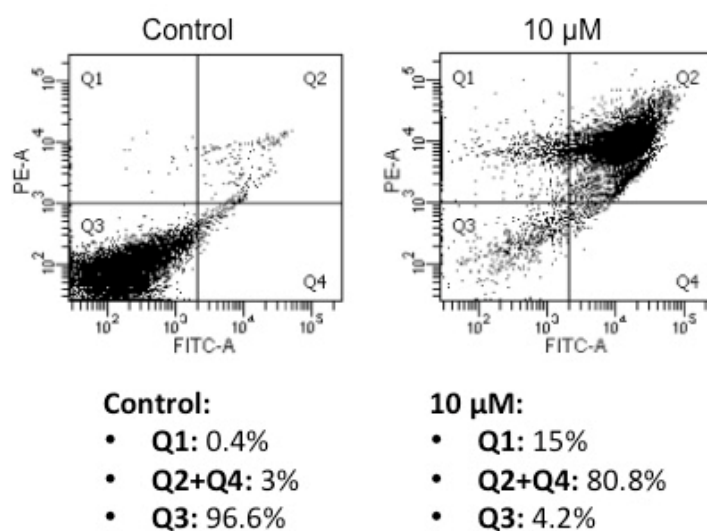


Figure S13. Dot plots from a representative experiment of A2780 cells incubated with complex **1** and loaded with Annexin V-FITC and propidium iodide. A2780 cells were incubated for 40 h with complex **1** at 10 μ M concentration. Percentages of viable (Q3), apoptotic (Q2+Q4) and necrotic (Q1) A2780cis are reported.