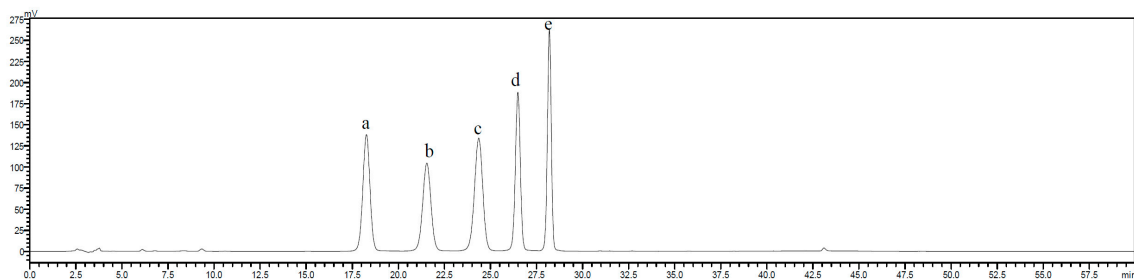
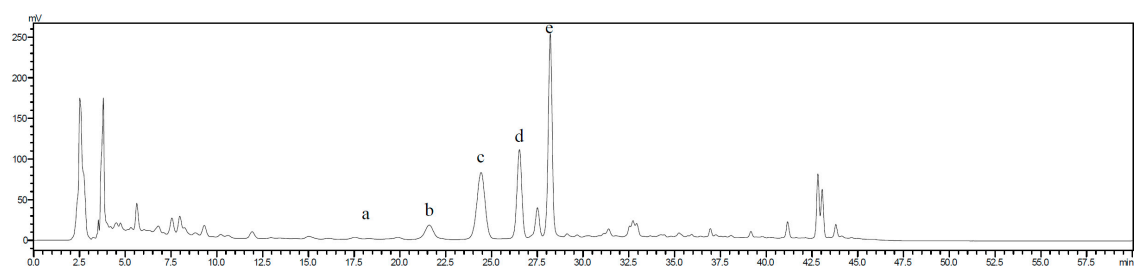


## SUPPLEMENTARY MATERIALS

### FIGURE LEGENDS

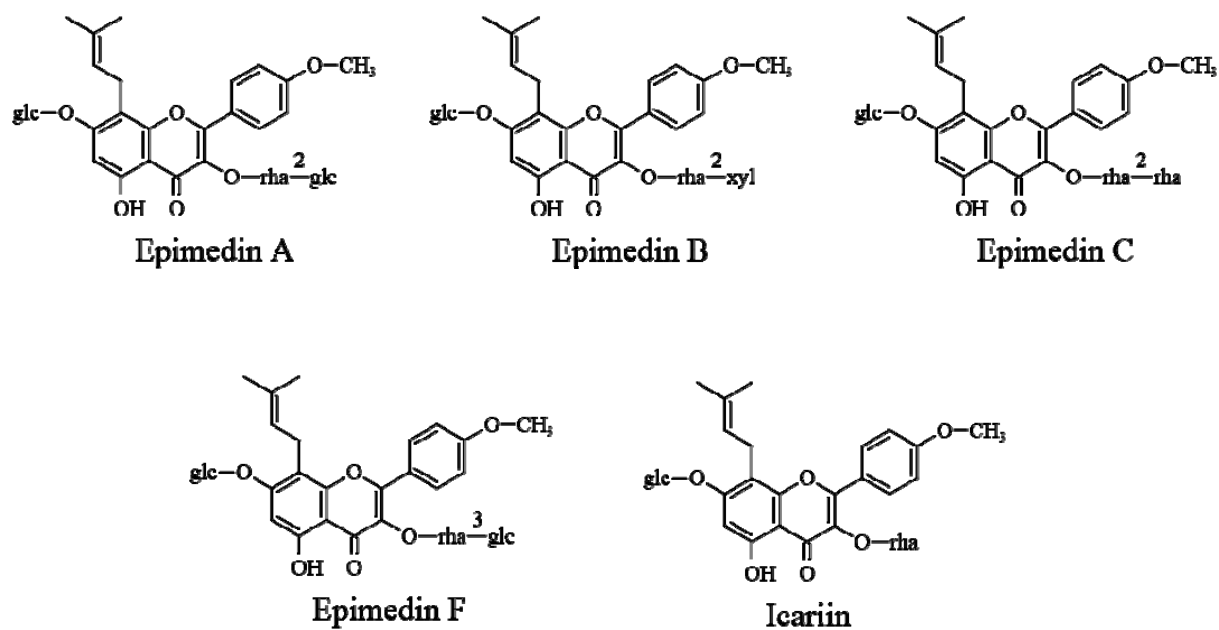


(A)



(B)

**Figure S1.** HPLC profile of *Epimedium* flavonoids. (A) Standards; (B) *Epimedium* flavonoids sample. The peaks a, b, c, d and e represent epimedin F, epimedin A, epimedin B, epimedin C and icariin, respectively. Peaks without a marker were not identified. The x and y coordinates represent the retention time (min) and response value of HPLC-detector (AU), respectively.



**Figure S2.** Chemical structures of epimedin A, epimedin B, epimedin C, epimedin F and icariin.