

Supplementary S1

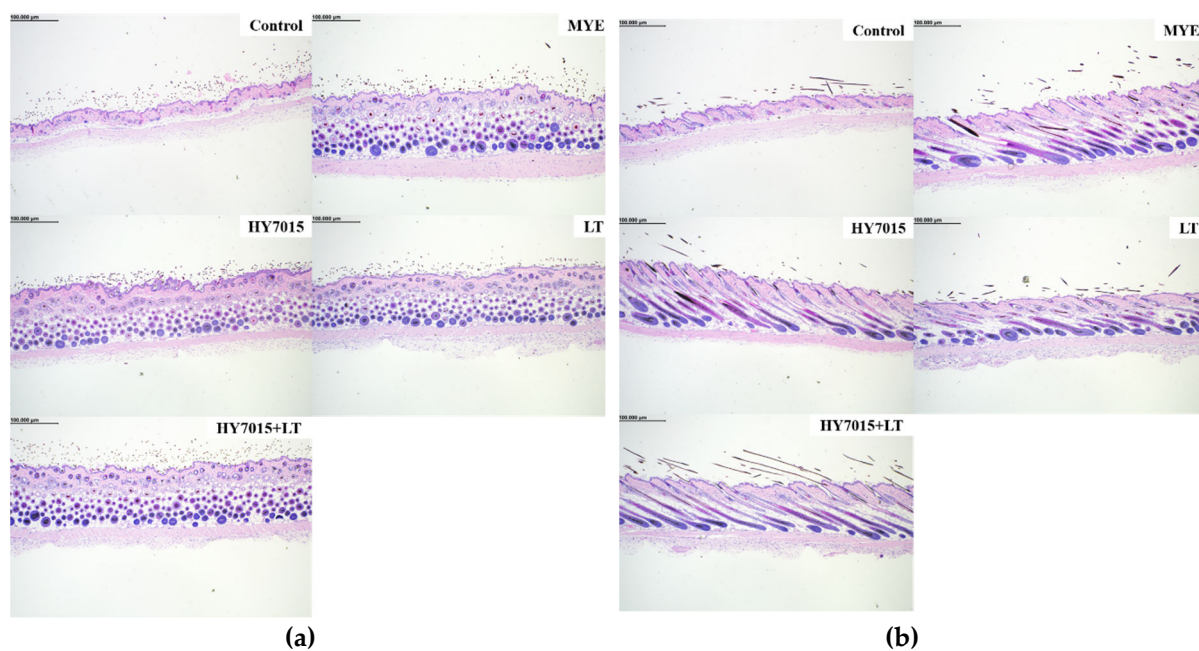


Figure S1. (a) Longitudinal and (b) transverse sections of mouse dorsal skin tissue samples by H&E staining.

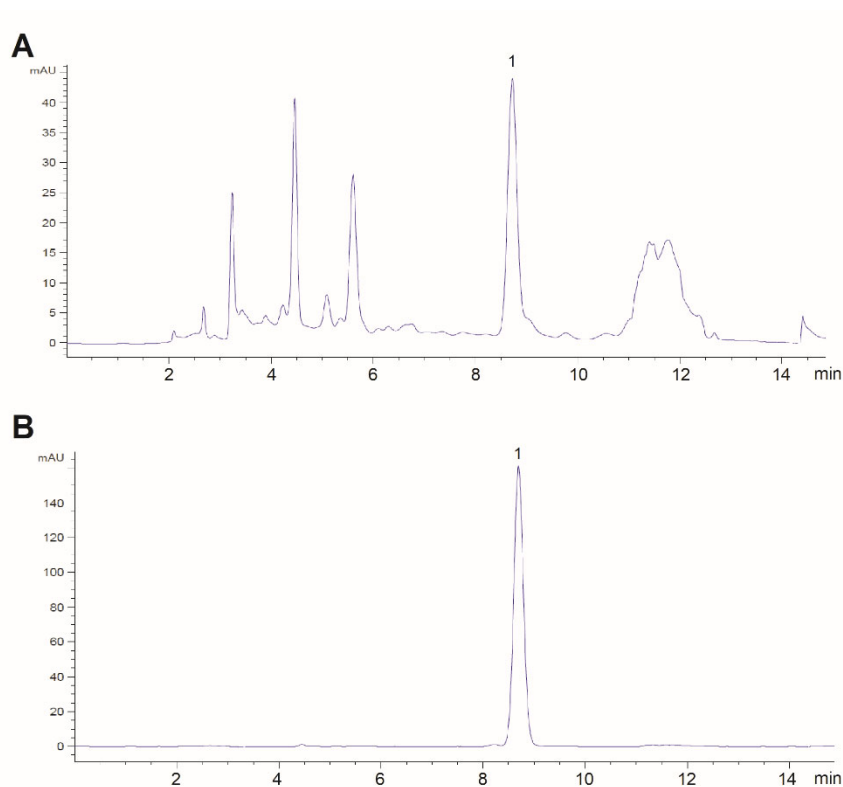


Figure S2. Liquid chromatogram of *Lycopus lucidus* Turcz. extract (A) and 50 µg/mL of rosmarinic acid standard (B). DAD detection at $\lambda = 330$ nm, 1 - rosmarinic acid.