

The ability of acid-based natural deep eutectic solvents for co-extraction of elements from roots of *Glycyrrhiza glabra* L and associated health risks

Alexander N. Shikov ^{1,*}, Veronika A. Shikova ¹, Anastasia O. Waley ¹, Marina A. Burakova ¹, Elena V. Flisyuk ¹, Andrew K. Whaley ¹, Inna I. Terninko ¹, Irina V. Gravel ² and Olga N. Pozharitskaya ³

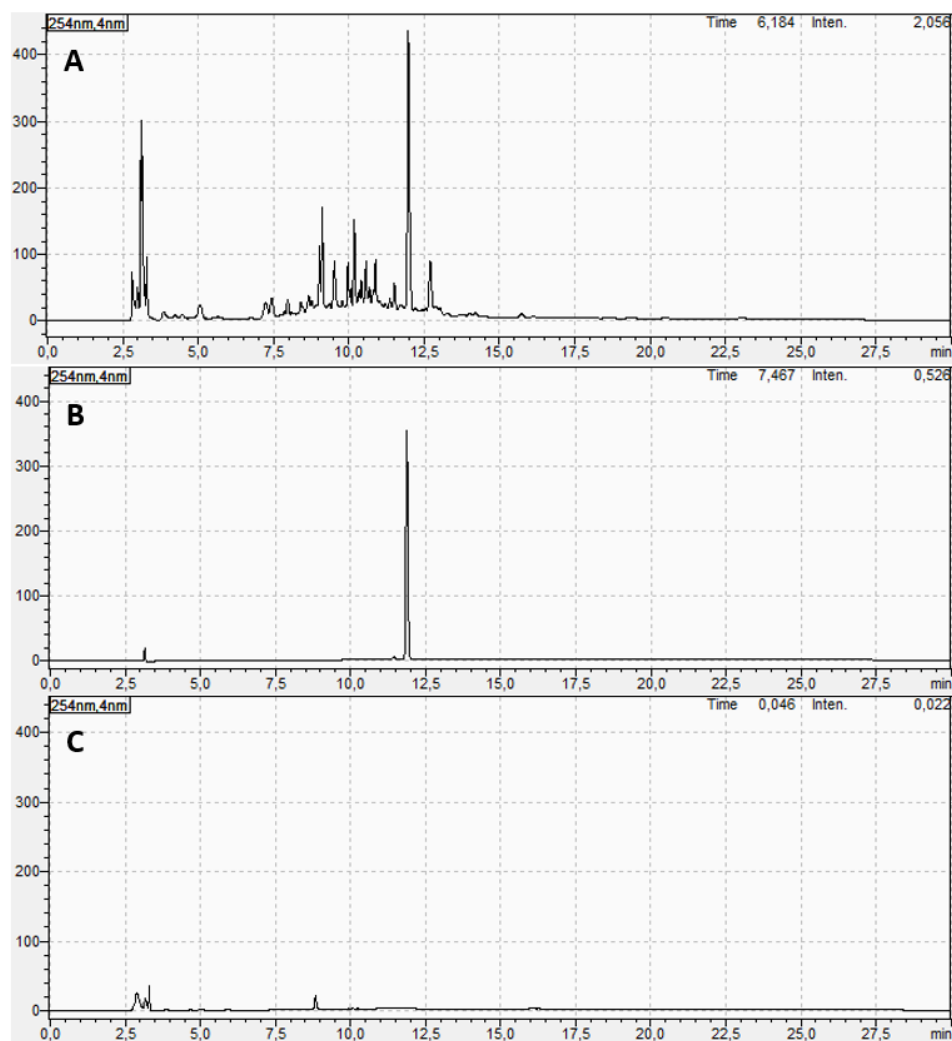


Figure S1. The typical chromatogram of NADES extract of licorice (**NADES5**) (A), glycyrrhizic acid 0.2 mg/mL (B), and pure NADES (C).