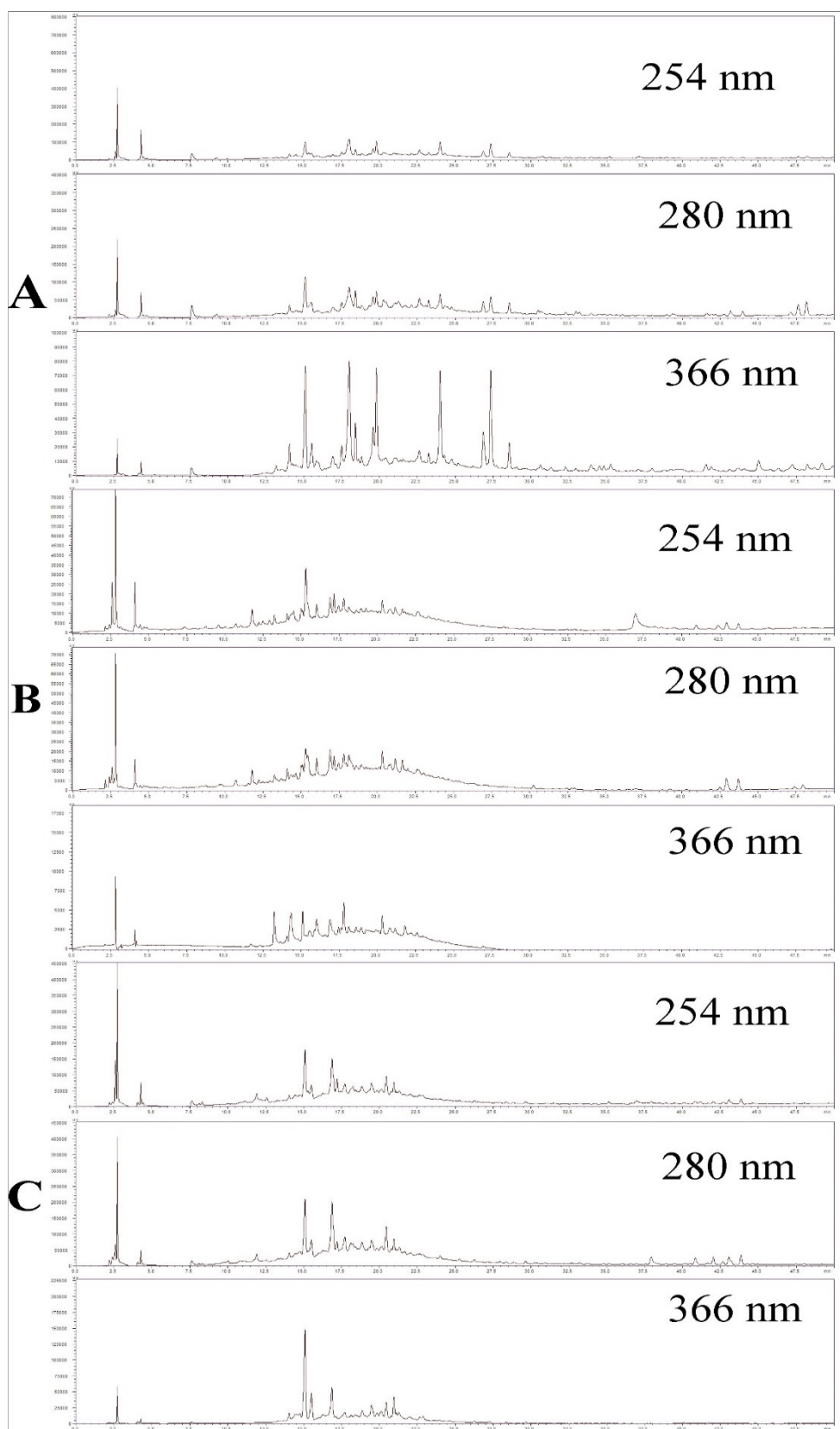


Supplementary Material



a: leaves; b: branches; c: roots.

Figure S1. Analytical chromatograms of methanol extract of *M. hirsuta* by HPLC-PDA, gradient mode in 65.5 min, injected sample solution 1 mg. mL⁻¹, flow 1 mL. min⁻¹, C₁₈ reverse phase column, detection at wavelengths 254 nm, 280 nm and 366 nm, ^a leaves, ^b branches and ^c roots

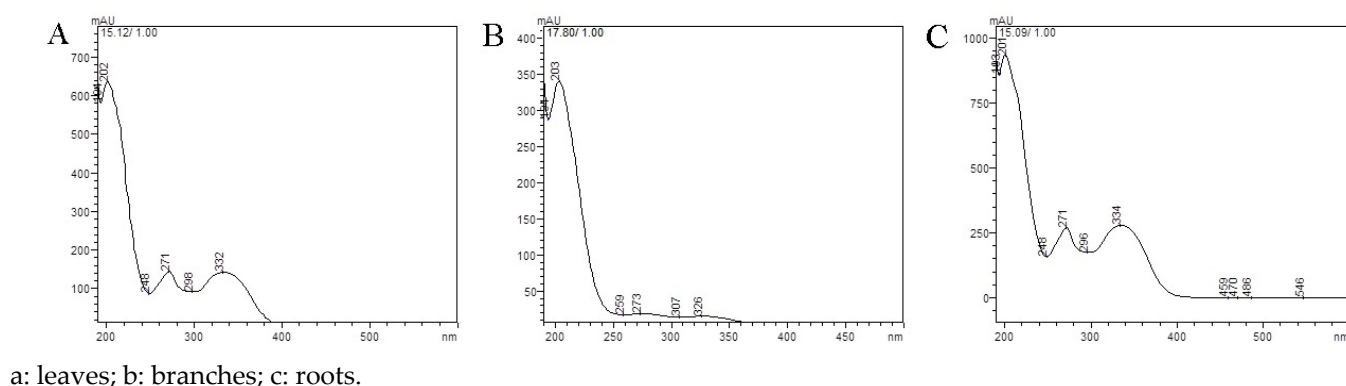


Figure S2. UV spectra at wavelengths in the range of 200 nm to 334 nm at the retention time 16.12min, 17.80min and 15.05min respectively. ^a leaves, ^b branches and ^c roots

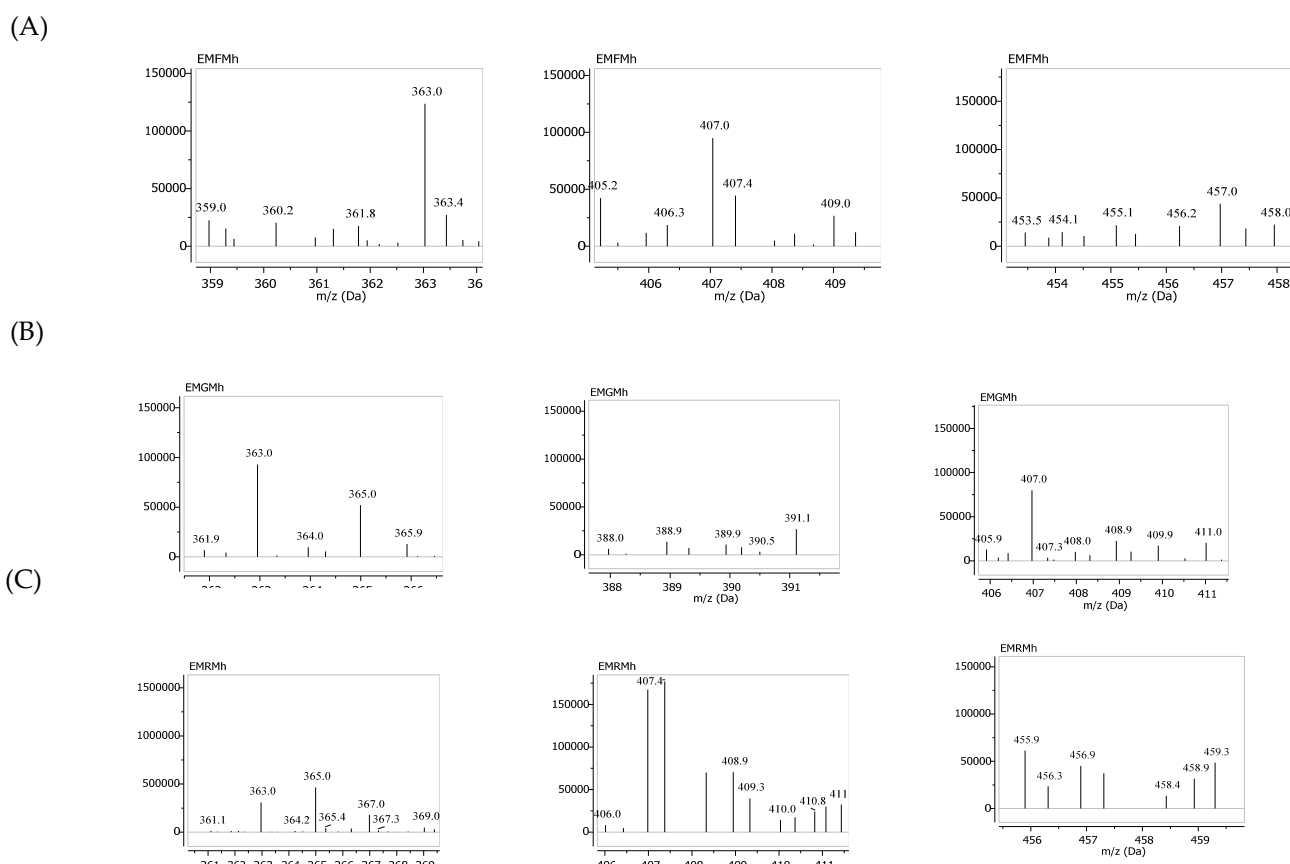
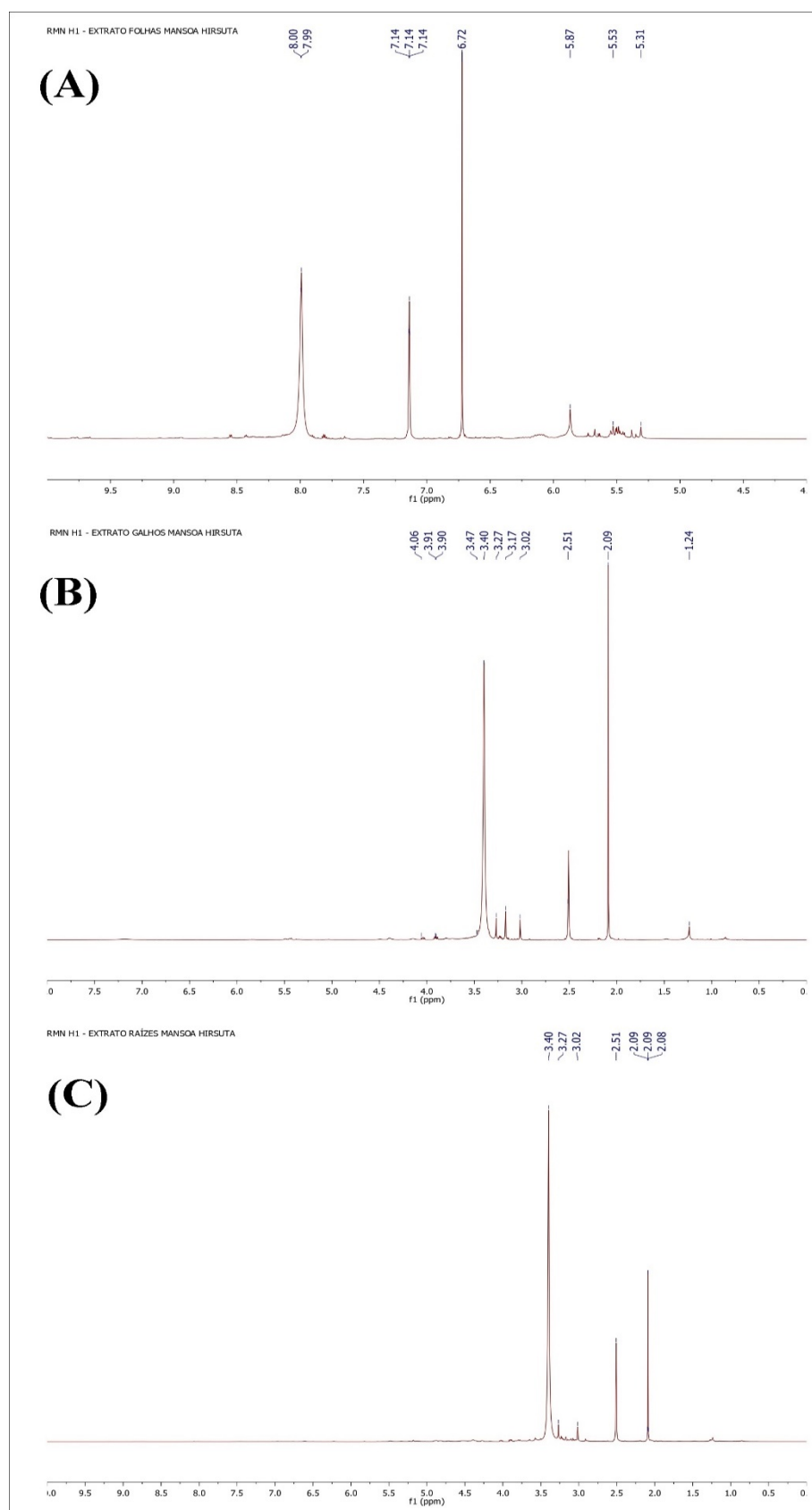


Figure S3. Spectra (A) leaves (B) branches (3) and (C) roots with the corresponding m/z fragments in the negative ionization mode of oleonolic and ursolic acid



a: leaves; b: branches; c: roots.

Figure S4. ^1H NMR spectra (DMSO- d_6 , 600 MHz) of methanol extract of leaves, branches and roots of *M. hirsuta*

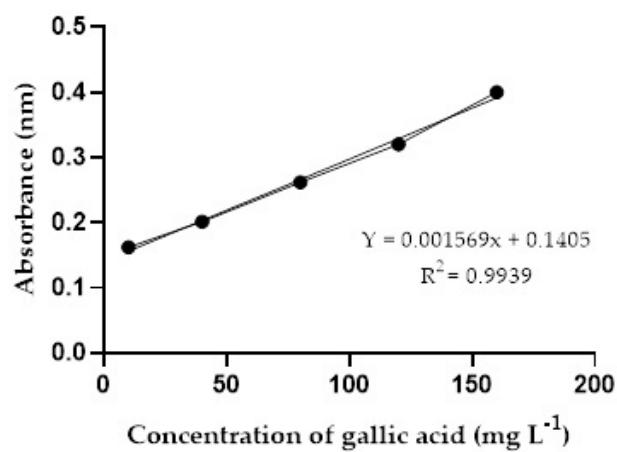


Figure S5. Standard curve of total phenols from *M. hirsuta* extracts