

## Supplementary Material

### ***Duguetia pycnastera* Sandwith (Annonaceae) leaf essential oil inhibits HepG2 cell growth in vitro and in vivo**

Emmanoel V. Costa<sup>1,\*</sup>, César A. S. de Souza<sup>1</sup>, Alexandre F. C. Galvão<sup>2</sup>, Valdenizia R. Silva<sup>2</sup>, Luciano de S. Santos<sup>2</sup>, Rosane B. Dias<sup>2,3</sup>, Clarissa A. Gurgel Rocha<sup>2,3</sup>, Milena B. P. Soares<sup>2,4</sup>, Felipe M. A. da Silva<sup>1</sup>, Hector H. F. Koolen<sup>5</sup>, Daniel P. Bezerra<sup>2,\*</sup>

<sup>1</sup>Department of Chemistry, Federal University of Amazonas (UFAM), Manaus, Amazonas, 69080-900, Brazil.

<sup>2</sup>Gonçalo Moniz Institute, Oswaldo Cruz Foundation (IGM-FIOCRUZ/BA), Salvador, Bahia, 40296-710, Brazil.

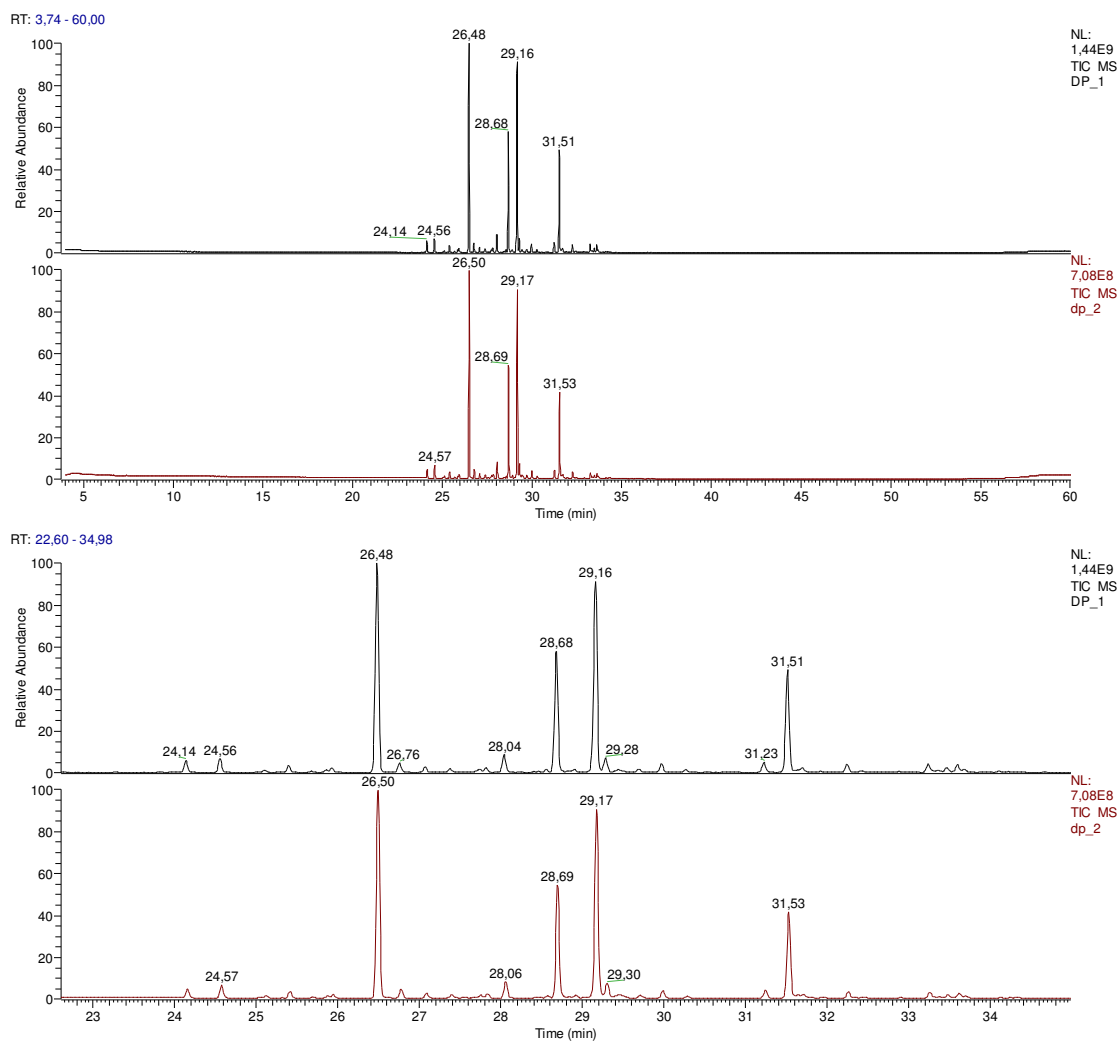
<sup>3</sup>Department of Propedeutics, School of Dentistry of the Federal University of Bahia, Salvador, Bahia, 40110-909, Brazil.

<sup>4</sup>SENAI Institute of Innovation (ISI) in Health Advanced Systems, University Center SENAI/CIMATEC, Salvador, Bahia, 41650-010, Brazil.

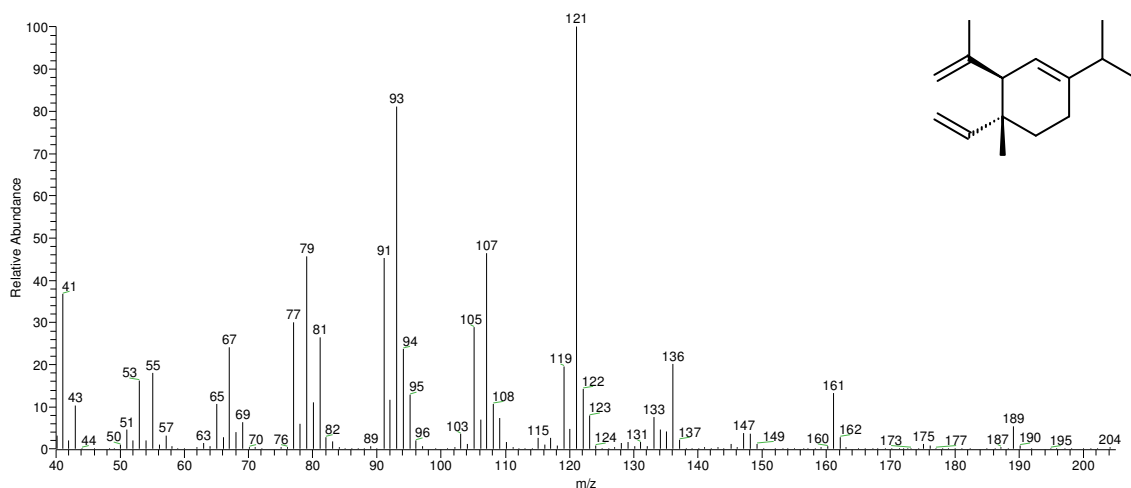
<sup>5</sup>Metabolomics and Mass Spectrometry Research Group, Amazonas State University (UEA), Manaus, Amazonas, 690065-130, Brazil.

\*Corresponding authors:

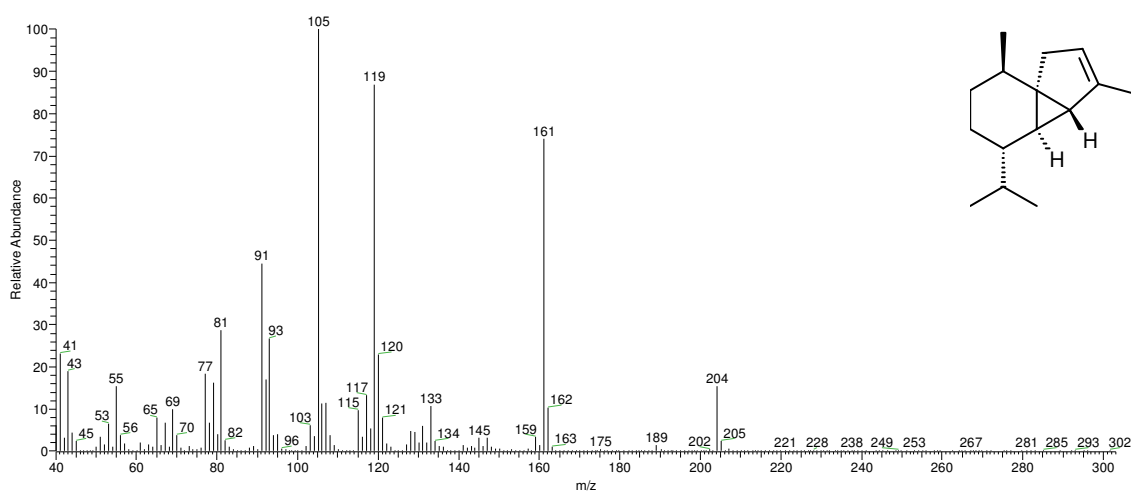
E. V. Costa (e-mail: [evc@ufam.edu.br](mailto:evc@ufam.edu.br)); D. P. Bezerra (e-mail: [daniel.bezerra@fiocruz.br](mailto:daniel.bezerra@fiocruz.br)); Tel./Fax: +55-92-3305-1181 Ramal 2870 (E.V. Costa); Tel./Fax: +55-71-3176-2272 (D. P. Bezerra).



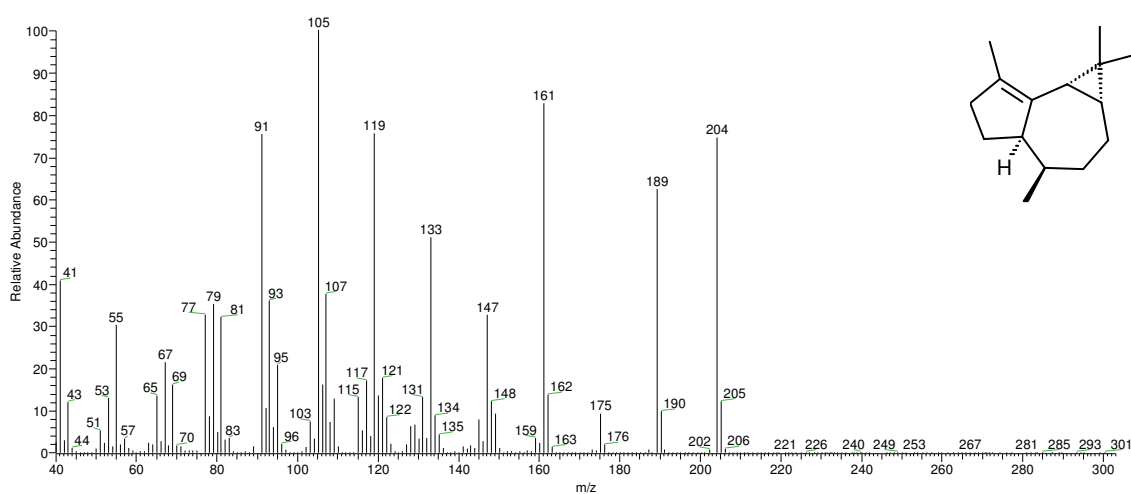
**Figure S1.** (A) Chromatogram of the total ions of the essential oil (triplicate) from the leaves of *Duguetia pycnastera*; (B) Enlargement of the region between 23.0 min to 34.0 min.



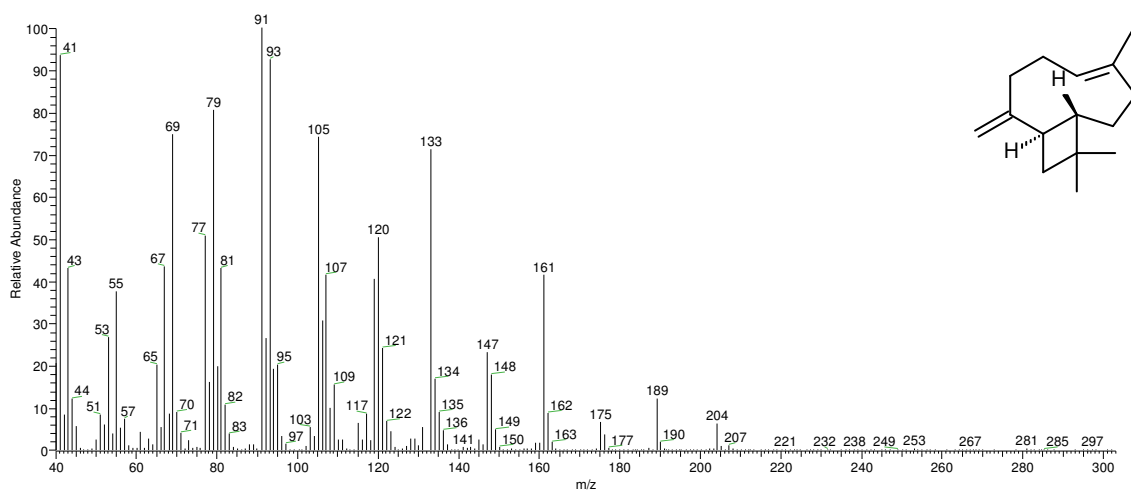
**Figure S2.** Mass spectrum of  $\delta$ -elemene ( $t_R$  24.14 min).



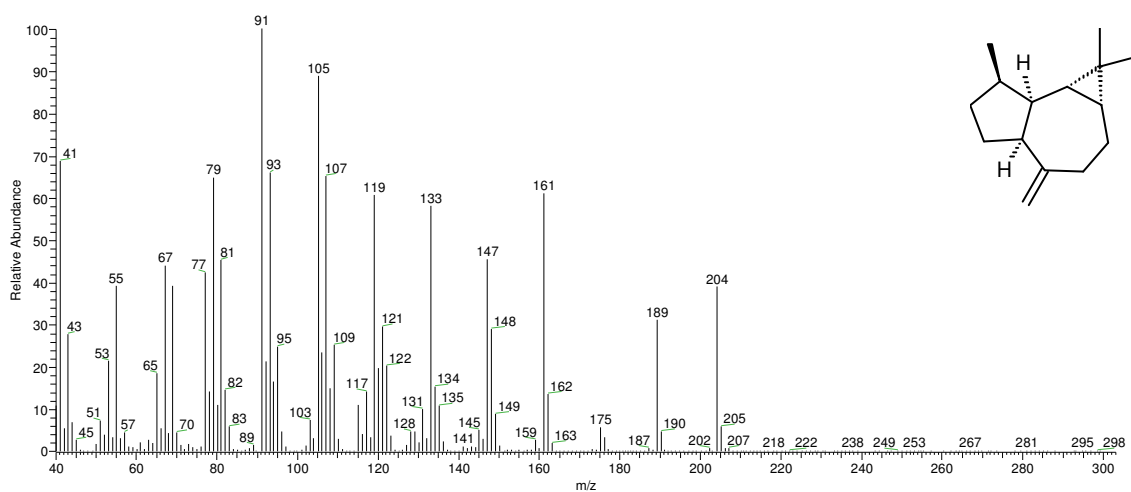
**Figure S3.** Mass spectrum of  $\alpha$ -cubebene ( $t_R$  24.56 min).



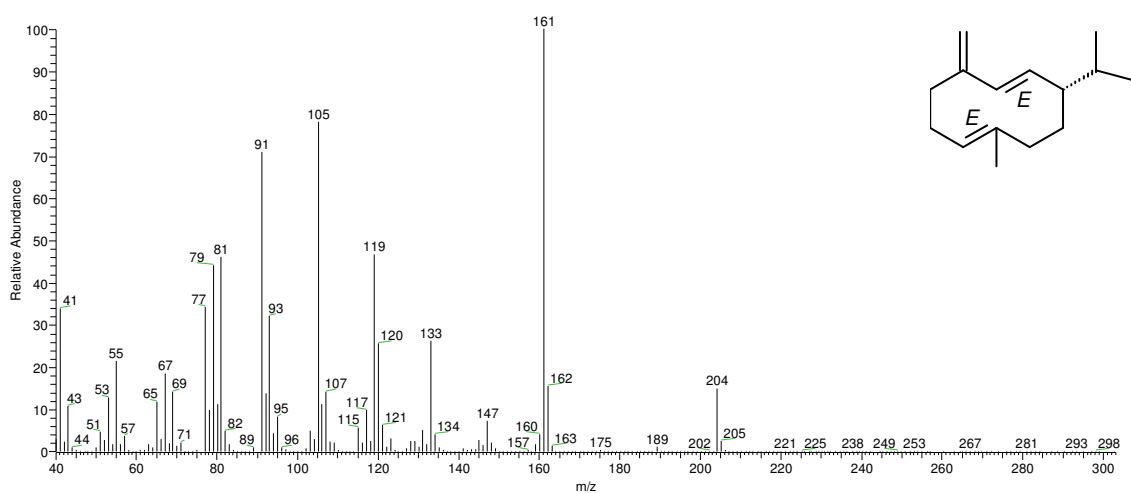
**Figure S4.** Mass spectrum of  $\alpha$ -gurjunene ( $t_R$  26.48 min).



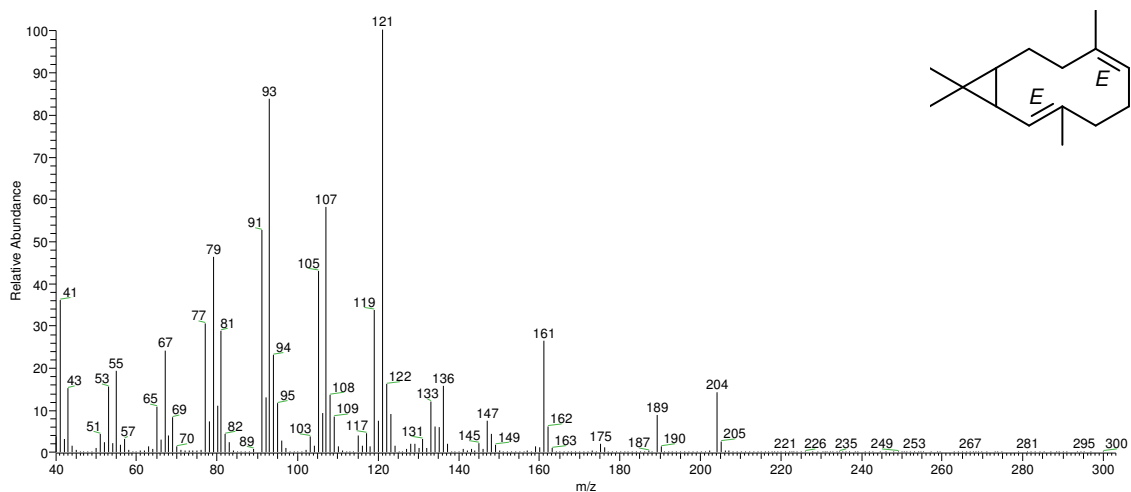
**Figure S5.** Mass spectrum of (*E*)-caryophyllene ( $t_R$  26.76 min).



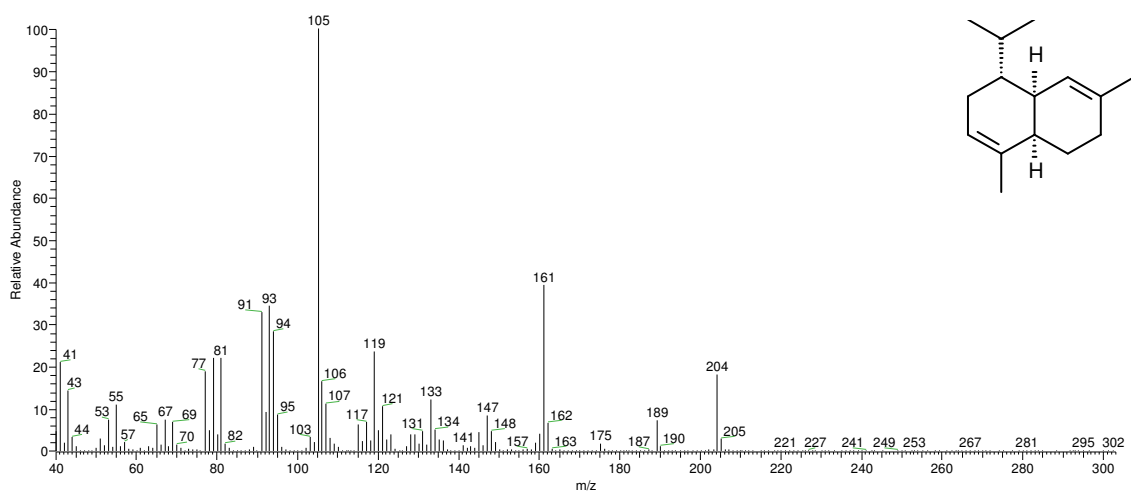
**Figure S6.** Mass spectrum of *allo*-aromadendrene ( $t_R$  28.04 min).



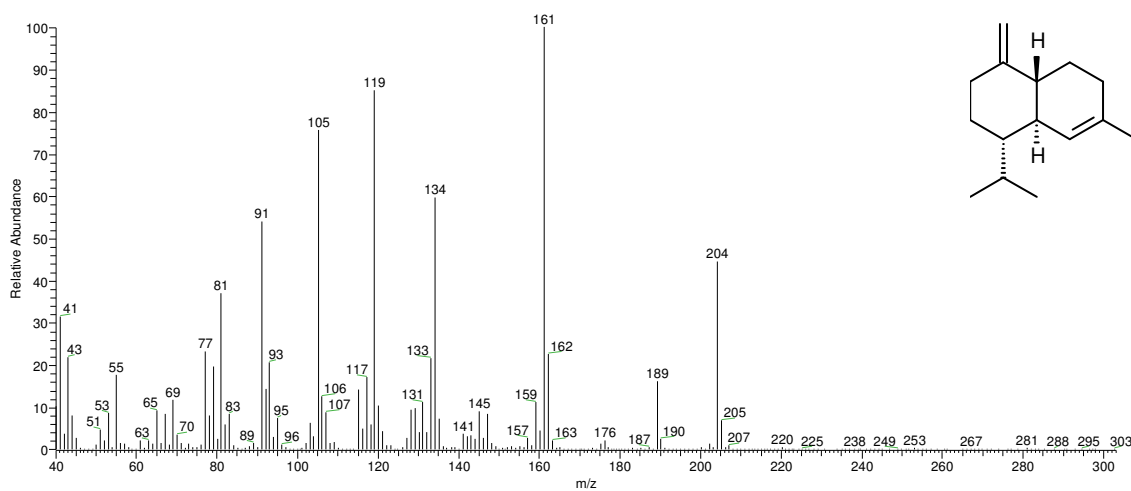
**Figure S7.** Mass spectrum of germacrene D ( $t_R$  28.68 min).



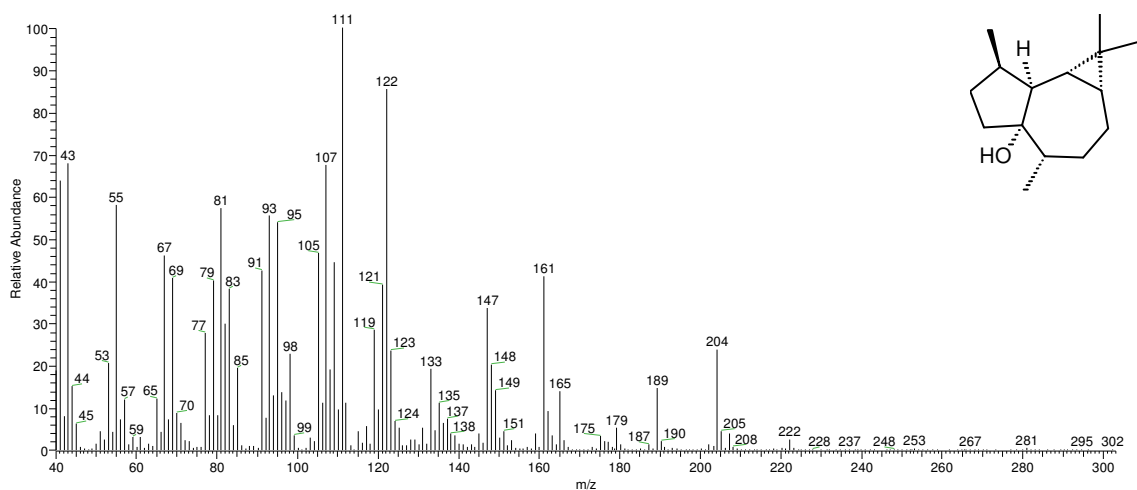
**Figure S8.** Mass spectrum of bicyclogermacrene ( $t_R$  29.16 min).



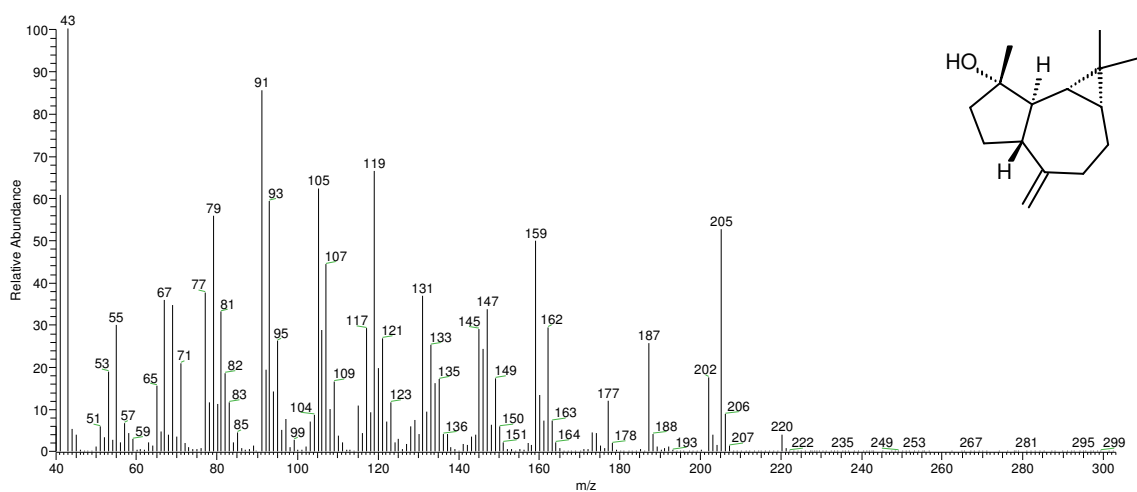
**Figure S9.** Mass spectrum of  $\alpha$ -murolene ( $t_R$  29.28 min).



**Figure S10.** Mass spectrum of  $\delta$ -cadinene ( $t_R$  29.97 min).



**Figure S11.** Mass spectrum of palustrol ( $t_R$  31.23 min).



**Figure S12.** Mass spectrum of spathulenol ( $t_R$  31.51 min).