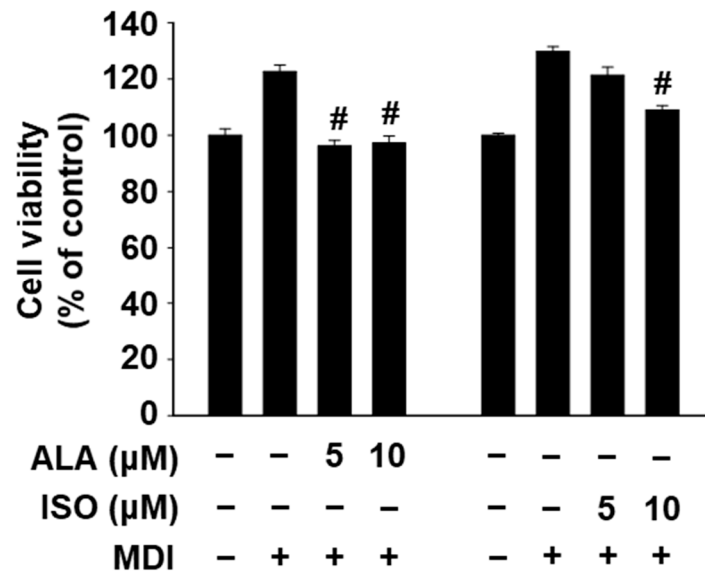


## Supplemental Materials

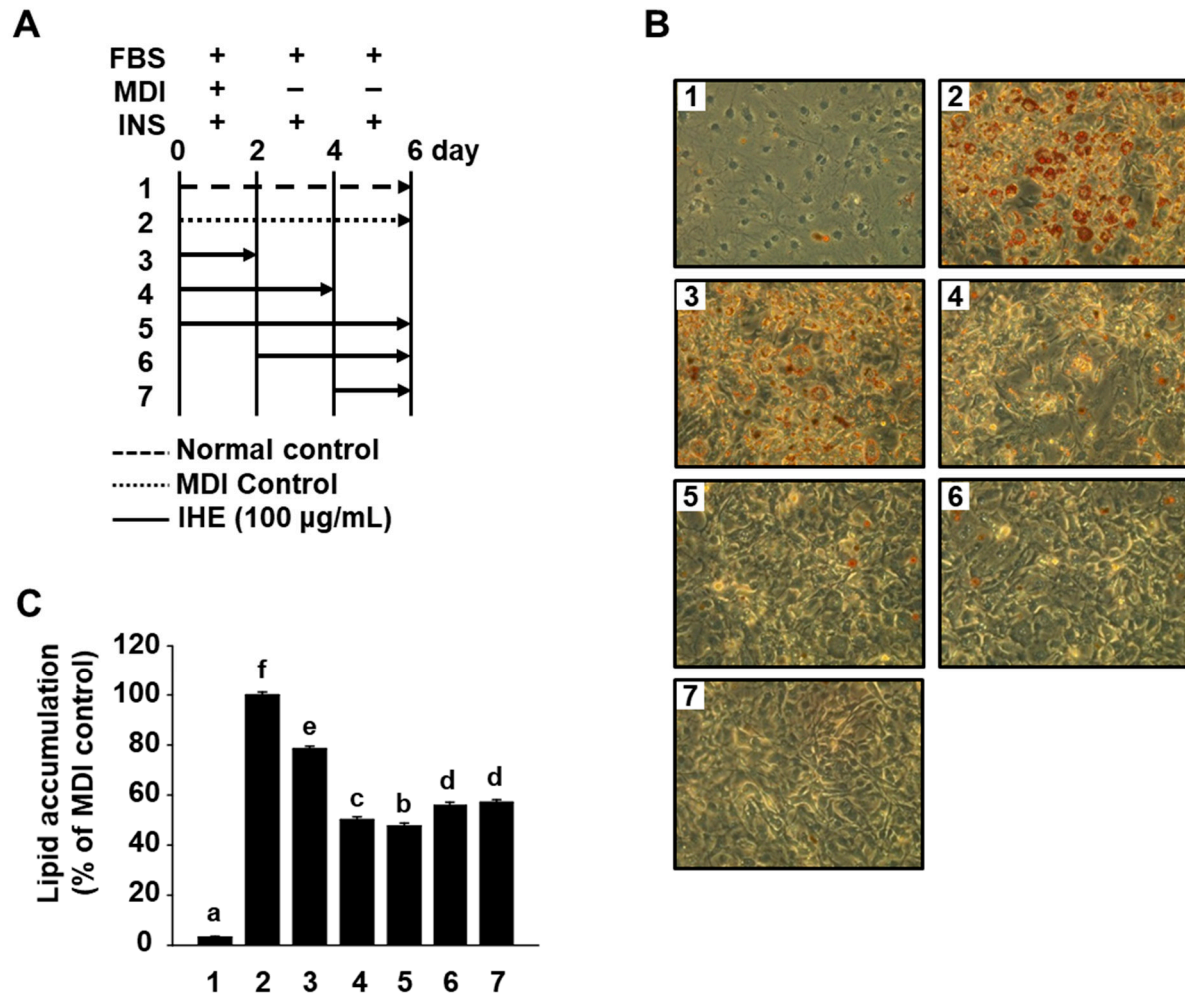
**Table S1.** Sequence of the primers used for qPCR.

Target gene <sup>1)</sup>	Primer sequence	
Tbp	Sense	5'-GTGAAGGGTACAAGGGGGTG-3'
	Antisense	5'-ACATCTCAGCAACCCACACA-3'
Ppar $\gamma$	Sense	5'-GGAGCCTAAGTTTGAGTTTGCTGTG-3'
	Antisense	5'-TGCAGCAGGTTGTCTTGGATG-3'
Cebpa	Sense	5'-TTGAAGCACAATCGATCCATCC-3'
	Antisense	5'-GCACACTGCCATTGCACAAG-3'
Fabp4	Sense	5'-TGGGAACCTGGAAGCTTGTCTC-3'
	Antisense	5'-GAATTCCACGCCCAGTTTGA-3'
Fas	Sense	5'-AGCACTGCCTTCGGTTCAGTC-3'
	Antisense	5'-AAGAGCTGTGGAGGCCACTTG-3'
Scd-1	Sense	5'-CAGCCGAGCCTTGTAAGTTC-3'
	Antisense	5'-GCTCTACACCTGCCTCTTCG-3'
Acaca	Sense	5'-GAAGCCACAGTGAAATCTCG-3'
	Antisense	5'-GATGGTTTGGCCTTTCACAT-3'
Perilipin	Sense	5'-GATGAGAGCCATGACGACCAGA-3'
	Antisense	5'-TGTGTACCACACCACCCAGGA-3'

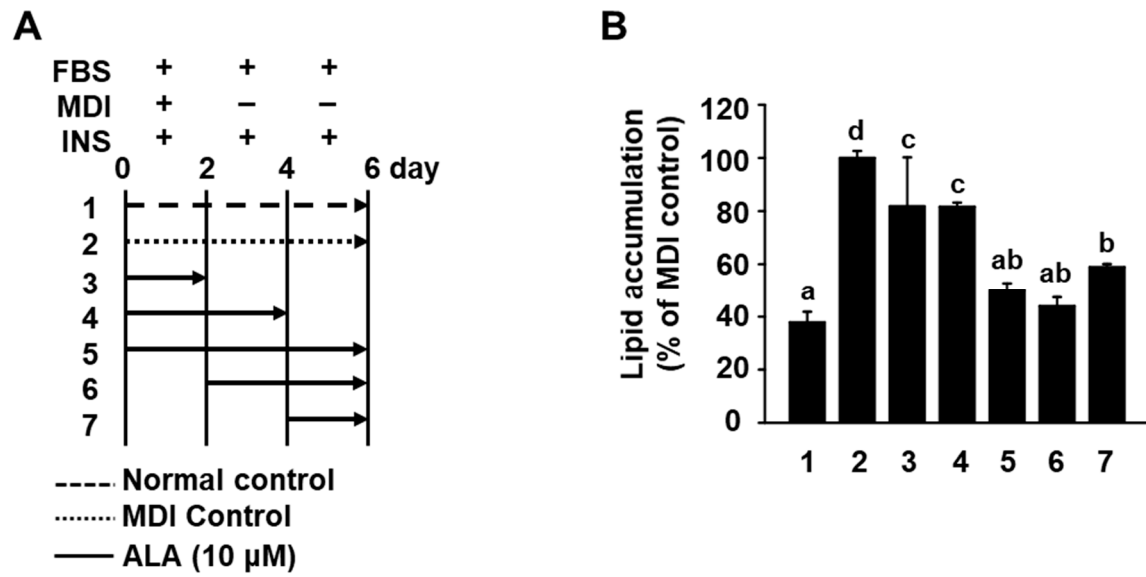
<sup>1)</sup>Tbp; TATA-binding protein, Ppar $\gamma$ ; Peroxisome proliferator-activated receptor  $\gamma$ , C/ebpa; CCAT/enhancer binding protein alpha, Fabp4; Fatty acid binding protein 4, Fas; Fatty acid synthase, Acaca; Acetyl-CoA carboxylase alpha, Scd-1; Stearoyl-CoA desaturase-1.



**Figure S1. Effect of ALA and ISO on cell viability in MDI-treated 3T3-L1 cells.** Cells were treated with ALA or ISO for 7 days in the presence of MDI, and cell viability was measured at 7 days by an MTT assay. The results are presented as means  $\pm$  SEM ( $n \geq 3$ ). <sup>#</sup> $P < 0.001$  vs. MDI alone.



**Figure S2. Effect of IHE on different stages of adipogenic differentiation in MDI-treated 3T3-L1 cells.** A, Schematic model showing IHE treatment during adipogenic differentiation of 3T3-L1 cells. The arrows indicate the duration of IHE (100 µg/mL) treatment. B and C, Cells were stained with Oil Red O at 6 days after the induction of differentiation, and lipid accumulation was measured, as described in the Materials and Methods. The results are presented as means  $\pm$  SEM ( $n \geq 3$ ), and different letters are significantly different at  $P < 0.05$  by Duncan's multiple range test.



**Figure S3. Effect of ALA on different stages of adipogenic differentiation in MDI-treated 3T3-L1 cells.** A, Schematic model showing IHE treatment during adipogenic differentiation of 3T3-L1 cells. The arrows indicate the duration of ALA (10  $\mu$ M) treatment. B and C, Cells were stained with Oil Red O at 6 days after the induction of differentiation, and lipid accumulation was measured, as described in the Materials and Methods. The results are presented as means  $\pm$  SEM ( $n \geq 3$ ), and different letters are significantly different at  $P < 0.05$  by Duncan's multiple range test.