

Figure S1. GC/MS total ion chromatograms of two different tissues of R-HJH and wild-type HJH fruits. A, flavedo of HJH; B, albedo of HJH; C, flavedo of R-HJH; and D, albedo of R-HJH.

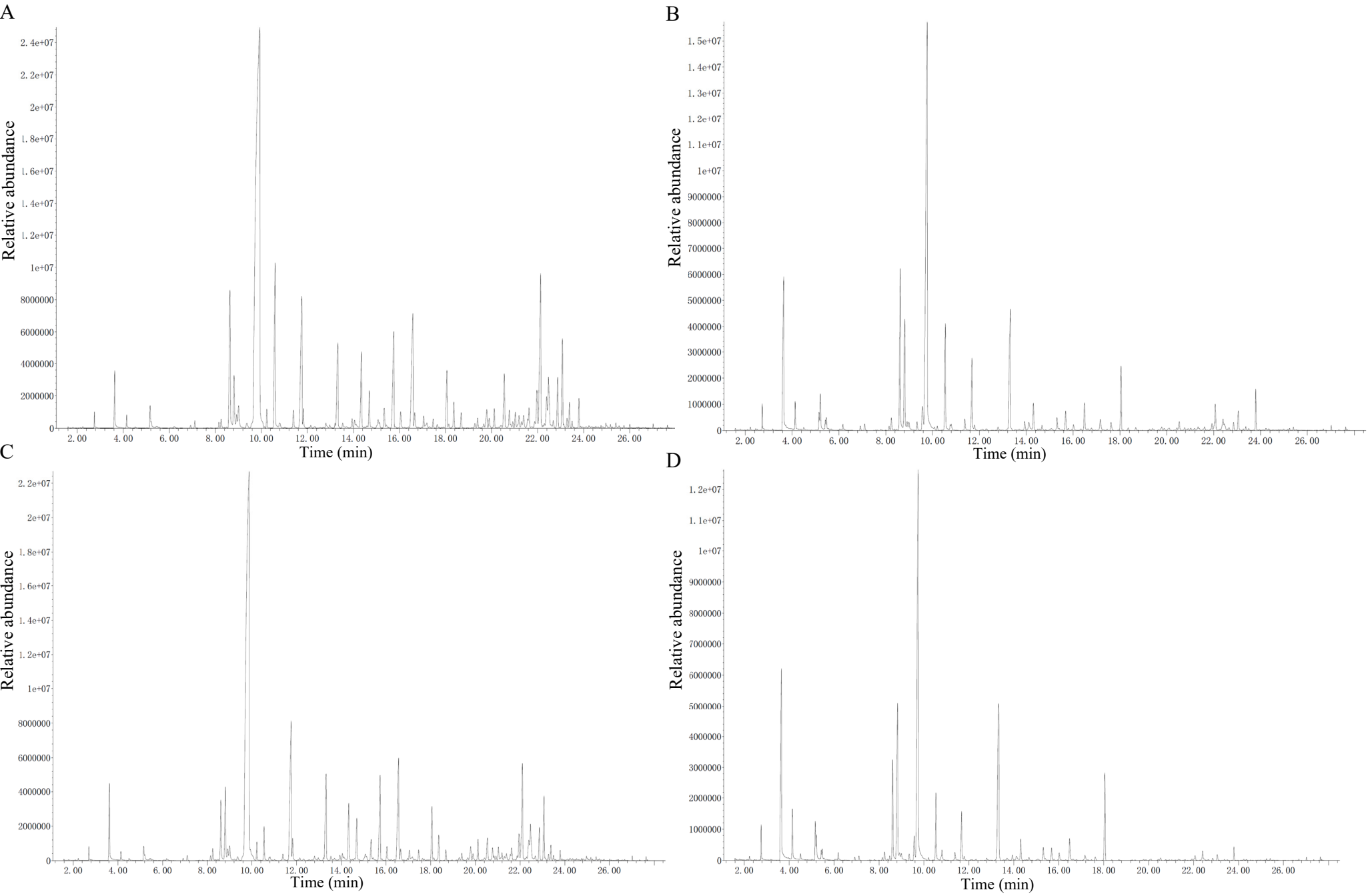


Figure S2. Volcano map of differentially expressed genes. Each point in the figure represents a gene, and the red and green dots indicate that the expression level of DEGs is upregulated and downregulated, respectively.

