

Supplementary Materials

Antiproliferative and Antimicrobial Effects of *Rosmarinus officinalis* L. Loaded Liposomes

Irina Ielciu ¹, Mihaela Niculae ², Eموke Pall ², Cristina Barbălată ^{3,*}, Ioan Tomuță ³, Neli-Kinga Olah ^{4,5}, Ramona Flavia Burtescu ⁴, Daniela Benedec ⁶, Ilioara Oniga ⁶ and Daniela Hanganu ⁶

¹ Department of Pharmaceutical Botany, Faculty of Pharmacy, “Iuliu Hațieganu” University of Medicine and Pharmacy Cluj-Napoca, 400010, Romania; irina.ielciu@umfcluj.ro (I.I.)

² Department of Clinical Sciences, University of Agricultural Sciences and Veterinary Medicine Cluj-Napoca, 400374 Romania; mihaela.niculae@usamvcluj.ro (M.N.); emoke.pall@usamvcluj.ro

³ Department of Pharmaceutical Technology and Biopharmaceutics, Faculty of Pharmacy, “Iuliu Hațieganu” University of Medicine and Pharmacy, Cluj-Napoca, 400010, Romania; barbalata.cristina@gmail.com (C.B.); tomutaioan@umfcluj.ro (I.T.)

⁴ PlantExtrakt Ltd, Rădaia, 407059 Cluj-Napoca, Romania; neli.olah@plantextrakt.ro (N.K.O.); ramona.burtescu@plantextrakt.ro (R.B.)

⁵ Department of Medicinal Chemistry and Pharmaceutical Industry, Faculty of Pharmacy, “Vasile Goldiș” Western University of Arad, 310414 Arad, Romania; olah.neli@uvvg.ro (N.O.)

⁶ Department of Pharmacognosy, Faculty of Pharmacy, “Iuliu Hațieganu” University of Medicine and Pharmacy, Cluj-Napoca 400010, Romania; dbenedec@umfcluj.ro (D.B.); ioniga@umfcluj.ro (I.O.); dhanganu@umfcluj.ro (D.H.);

* Correspondence: barbalata.cristina@gmail.com (C.B.), irina.ielciu@umfcluj.ro (I.I.)

S. Supplementary Materials – Figures S1-S2

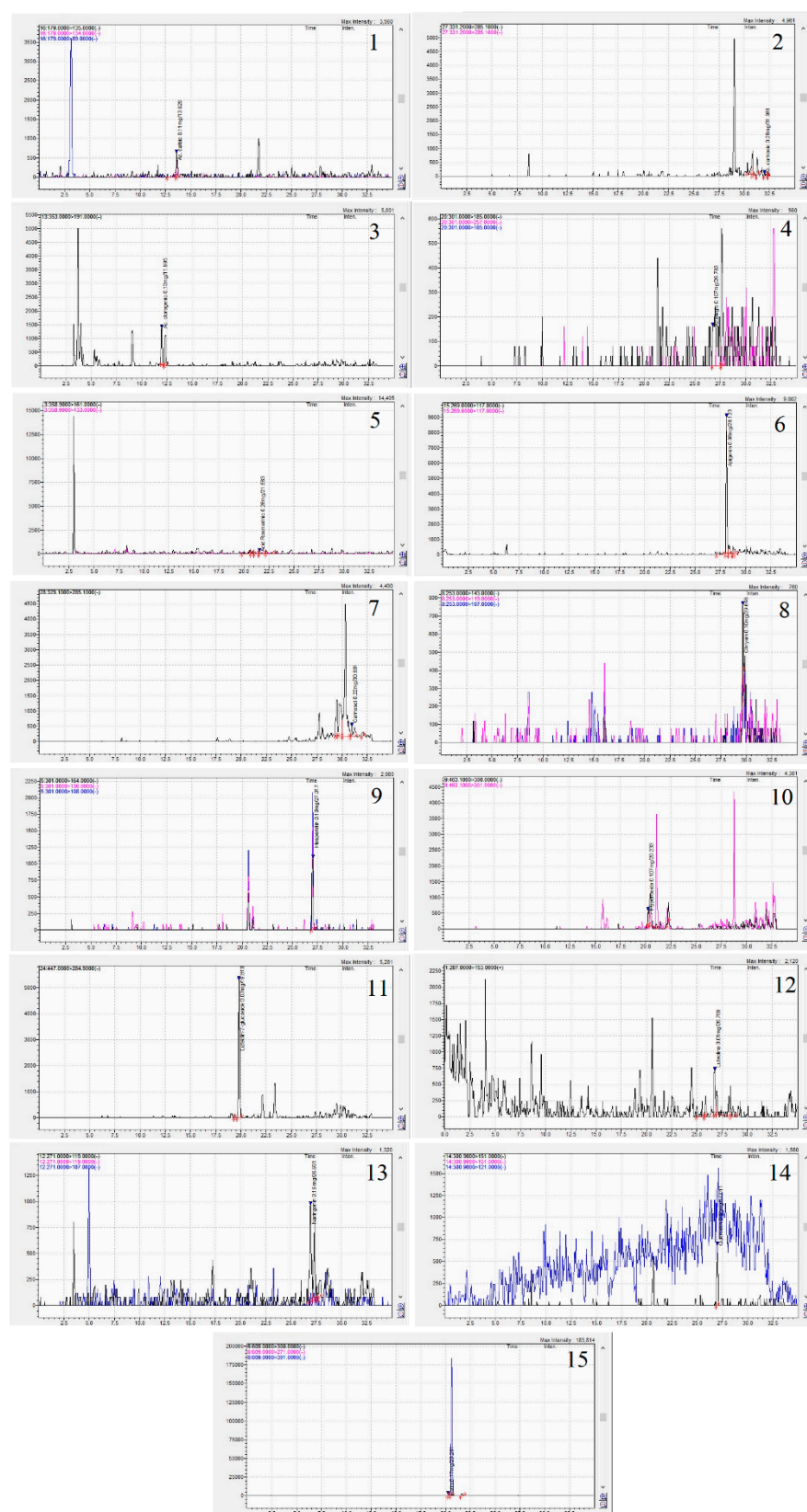


Figure S1. LC-MS chromatogram of *R. officinalis* loaded liposomes.



Figure S2. Antimicrobial effect of the *R. officinalis* extract loaded liposomes by well diffusion method.