

*Supplementary Materials*

# Discovery of Quinazoline-2,4(1H,3H)-Dione Derivatives as Potential Antibacterial Agent: Design, Synthesis, and Their Antibacterial Activity

Nader M. Boshta <sup>1,\*†</sup>, Farag A. El-Essawy <sup>2</sup>, Mohammed B. Alshammari <sup>3</sup>, Safaa G. Noreldein <sup>1</sup> and Osama M. Darwesh <sup>4</sup>

<sup>1</sup> Chemistry Department, Faculty of Science, Menoufia University, Shebin El-Koam 32511, Egypt; chemsafaagoda@gmail.com

<sup>2</sup> Preparatory Year Deanship, Basic Science Department, Prince Sattam Bin Abdulaziz University, 151 Alkharj 11942, Saudi Arabia; f.elessawy@psau.edu.sa

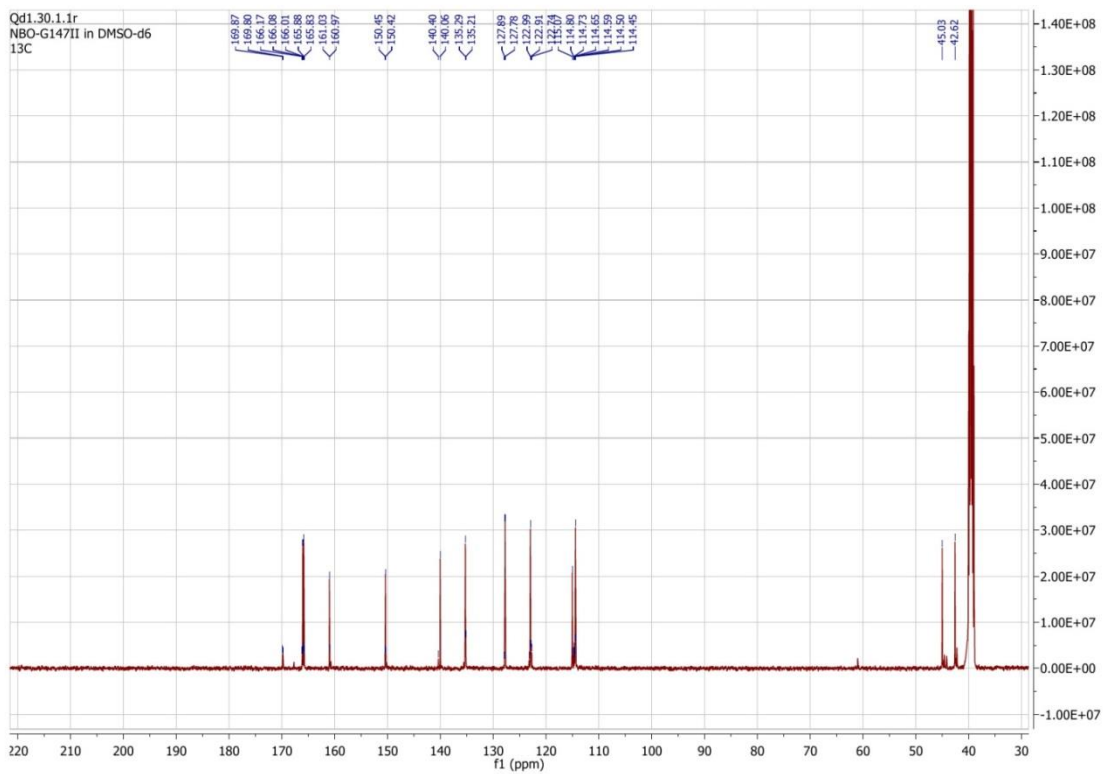
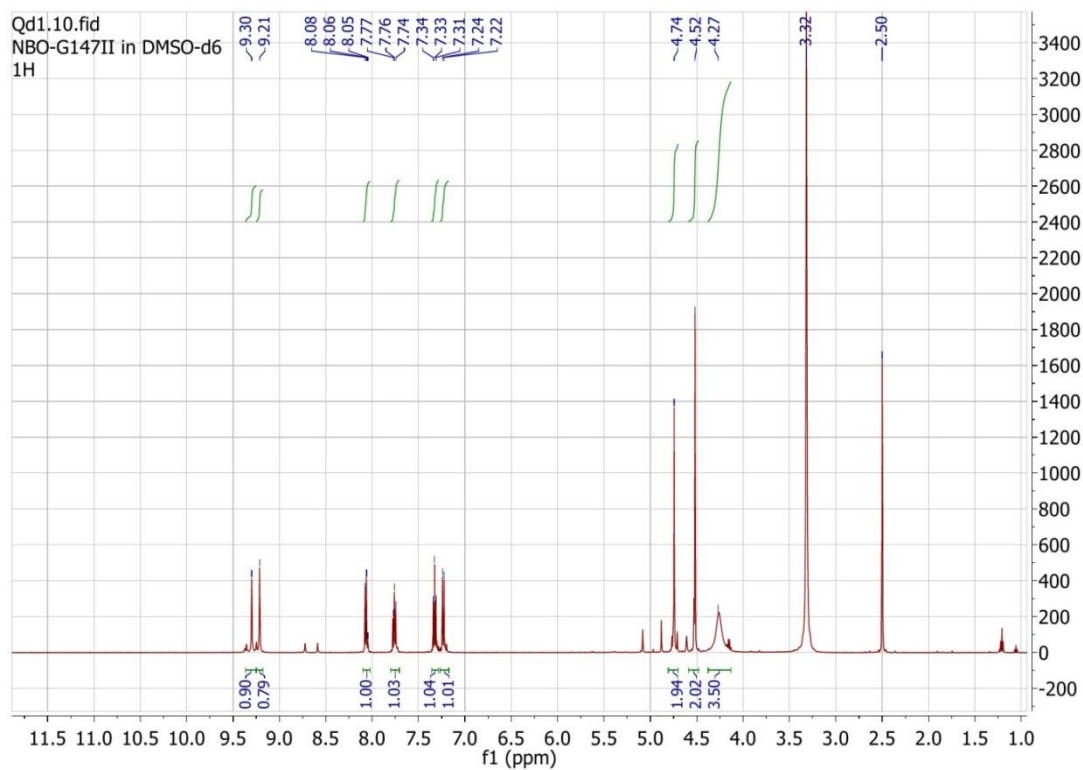
<sup>3</sup> College of Sciences and Humanities, Prince Sattam Bin Abdulaziz University, 151 Alkharj 11942, Saudi Arabia; m.alshammari@psau.edu.sa

<sup>4</sup> Environmental Microbiology and Nanotechnology group, Agricultural Microbiology Department, National Research Centre, Cairo 12622, Egypt; darweshosama@yahoo.com

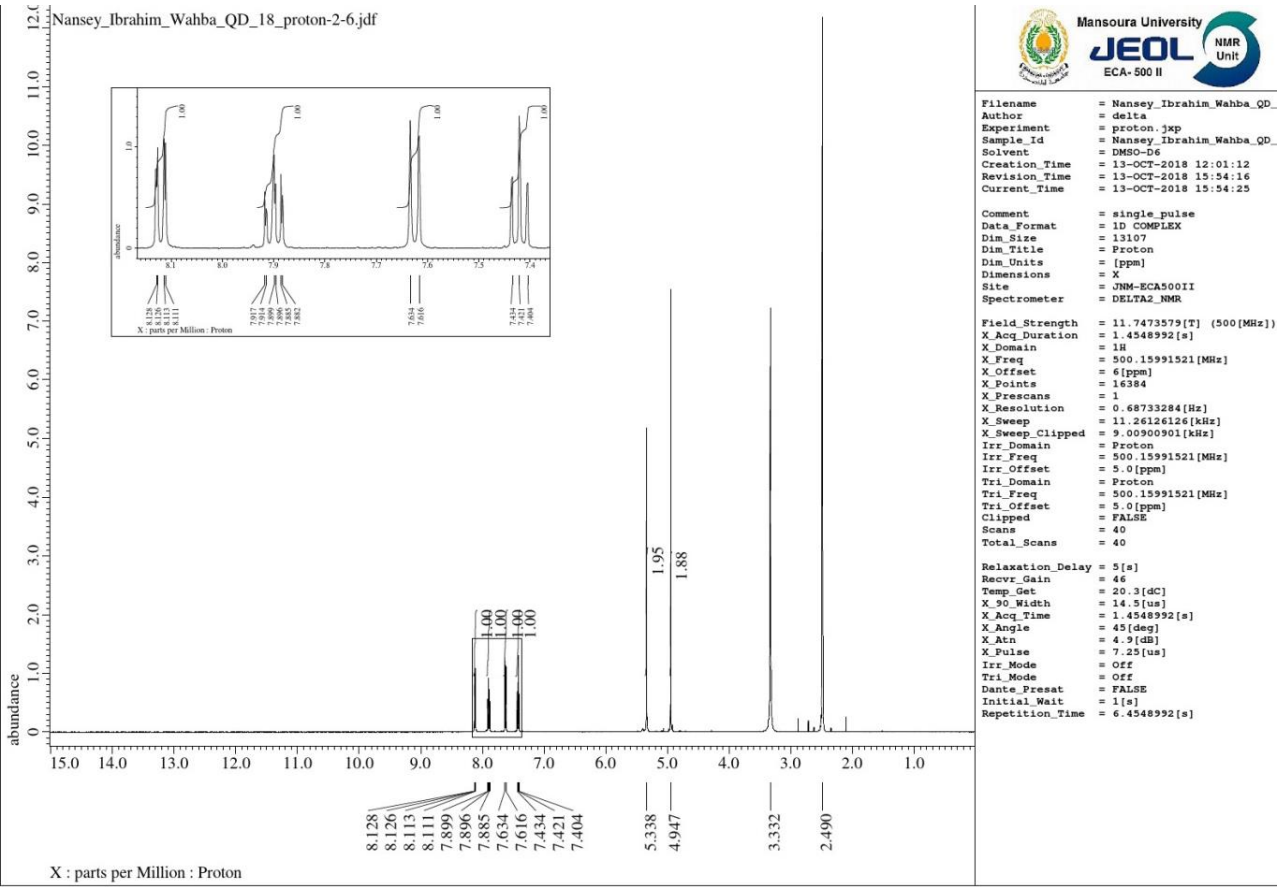
\* Correspondence: nboshta@uni-bonn.de; Tel.: +20-10-6604-7824; Fax: +20-48-223-5689

† Current address: Pharmaceutical Institute, Pharmaceutical Chemistry I, University of Bonn, An der Immenburg 4, D-53121 Bonn, Germany.

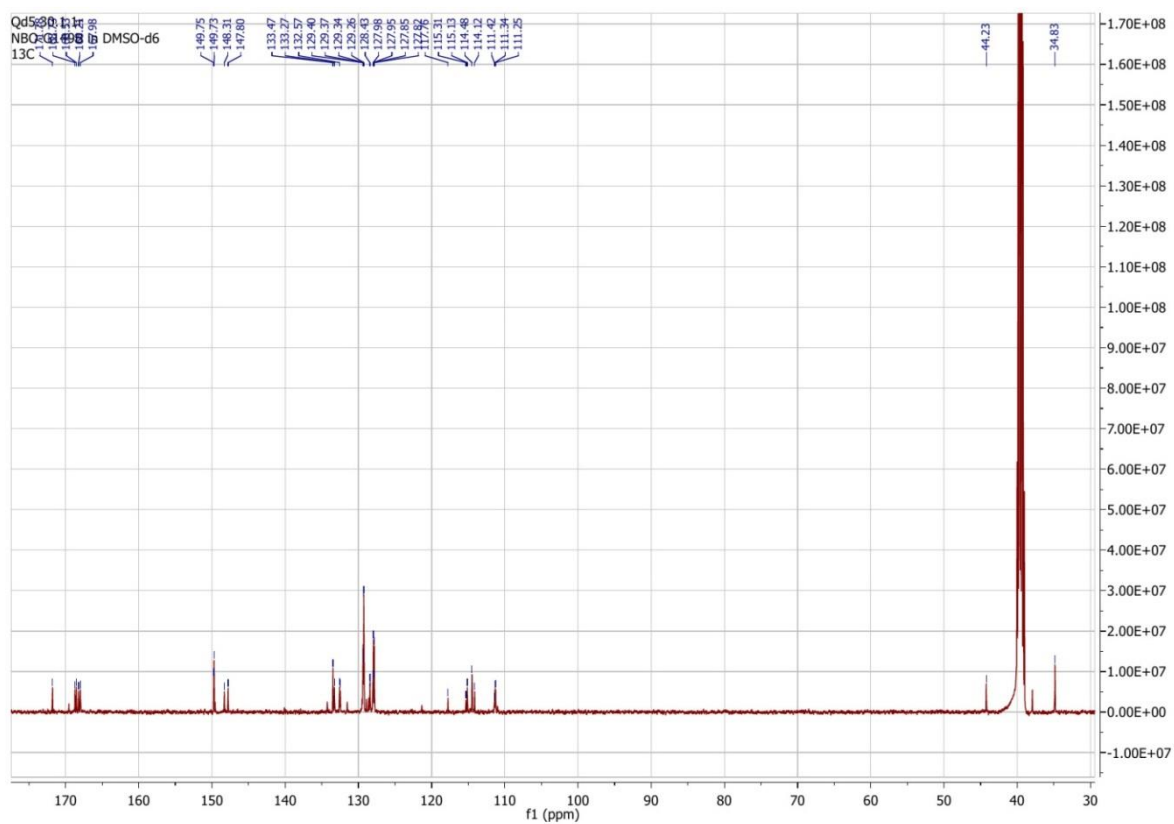
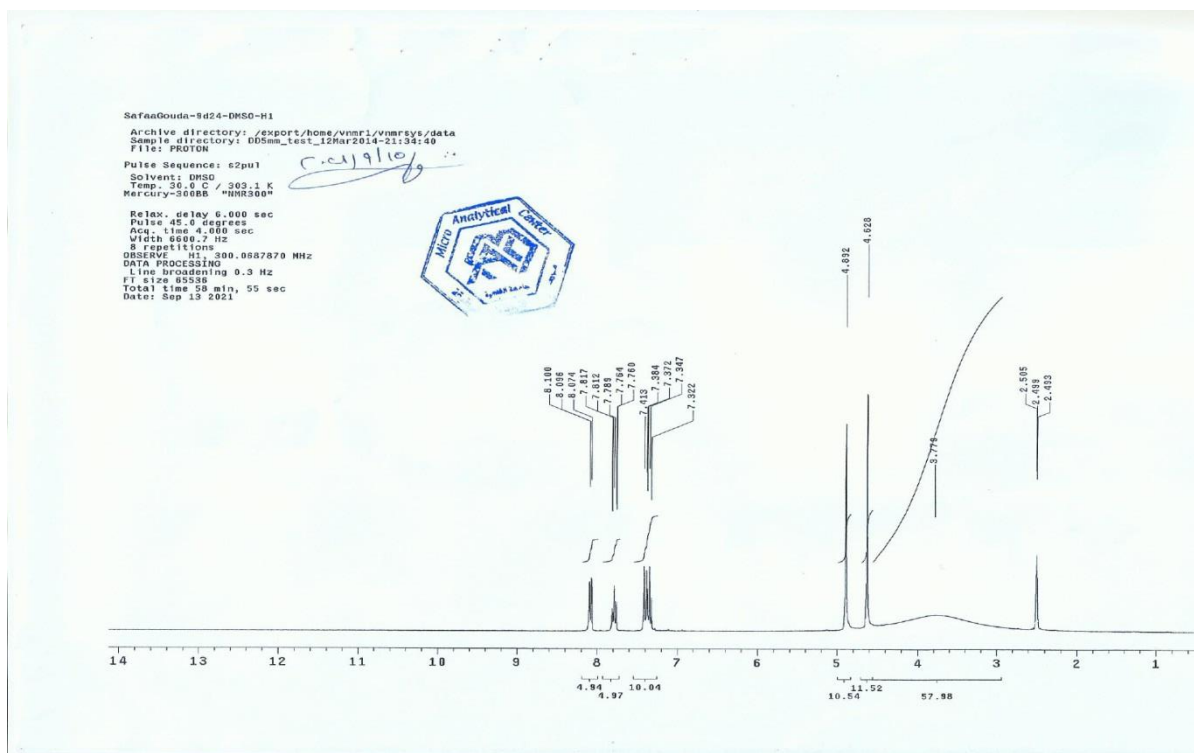
# Comp.3



Comp.4



# Comp.5



# Comp.6

SafaaGouda-9d25-DMSO-H1

Archive directory: /export/home/vnmr1/vnmrsys/data  
Sample directory: DD5mm\_test\_12Mar2014-21:34:40  
File: PROTON

Pulse Sequence: s2pul

Solvent: DMSO

Temp: 30.0 C / 303.1 K

Mercury-300BB "NMR300"

Relax. delay 6.000 sec

Pulse 45.0 degrees

Acq. time 4.000 sec

Width 6600.7 Hz

6 repetitions

OBSERVE H1, 300.0687870 MHz

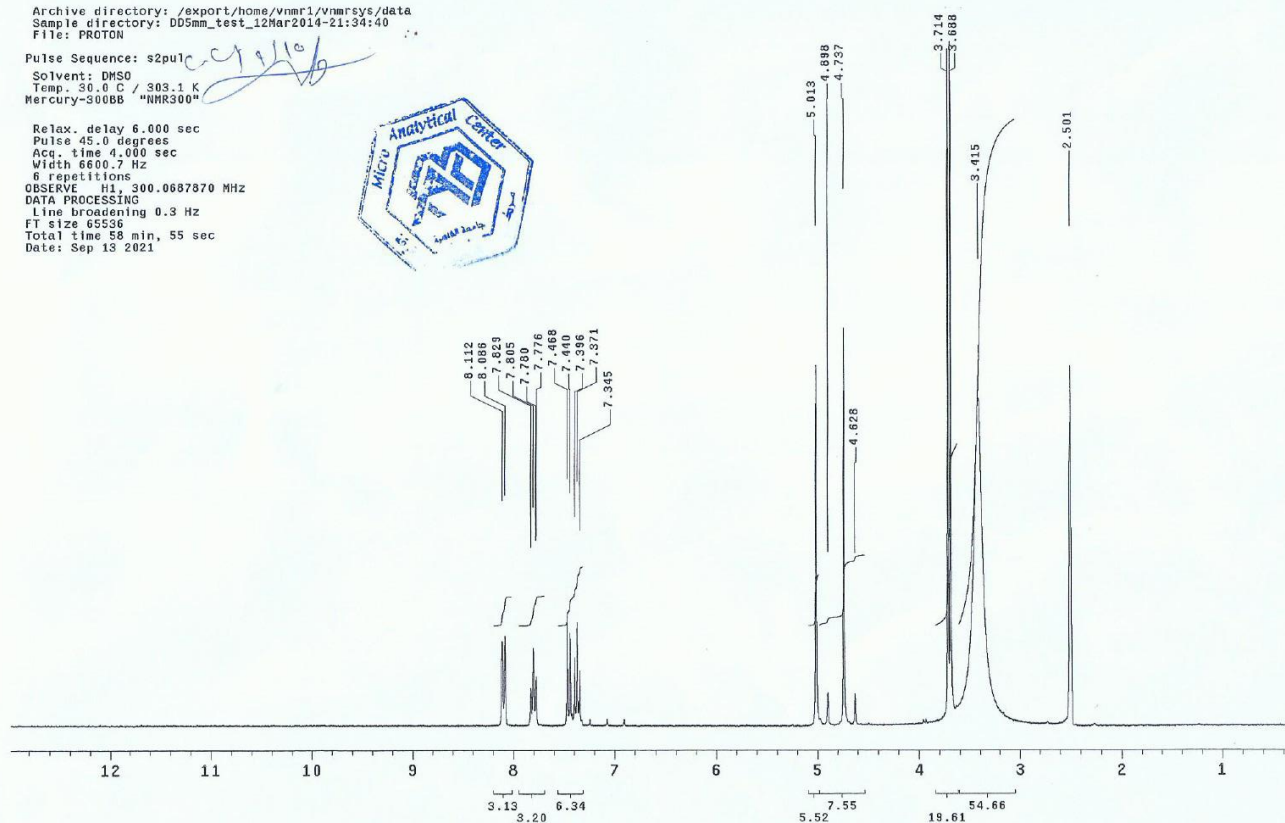
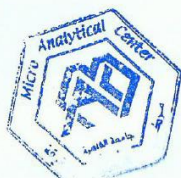
DATA PROCESSING

Line broadening 0.3 Hz

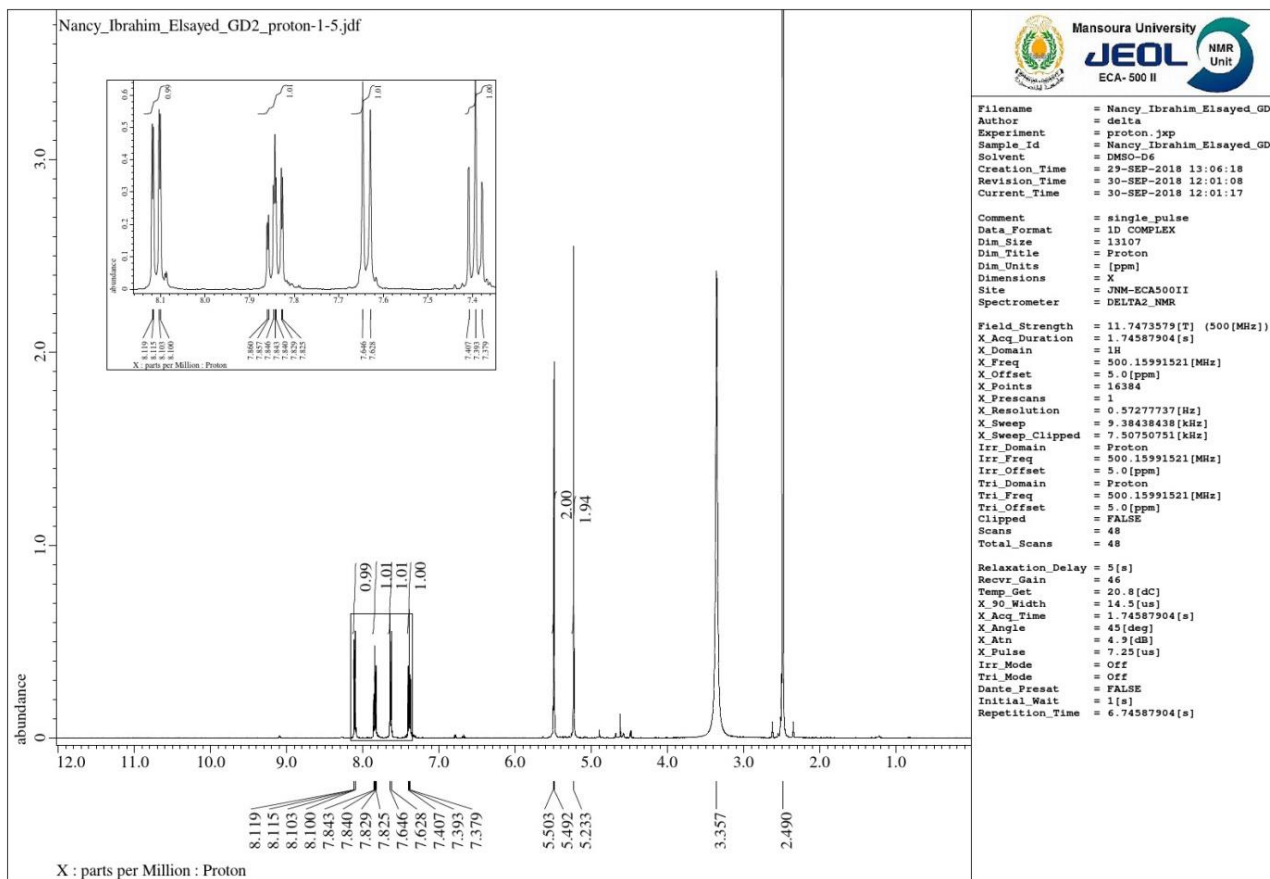
FT size 65536

Total time 58 min, 55 sec

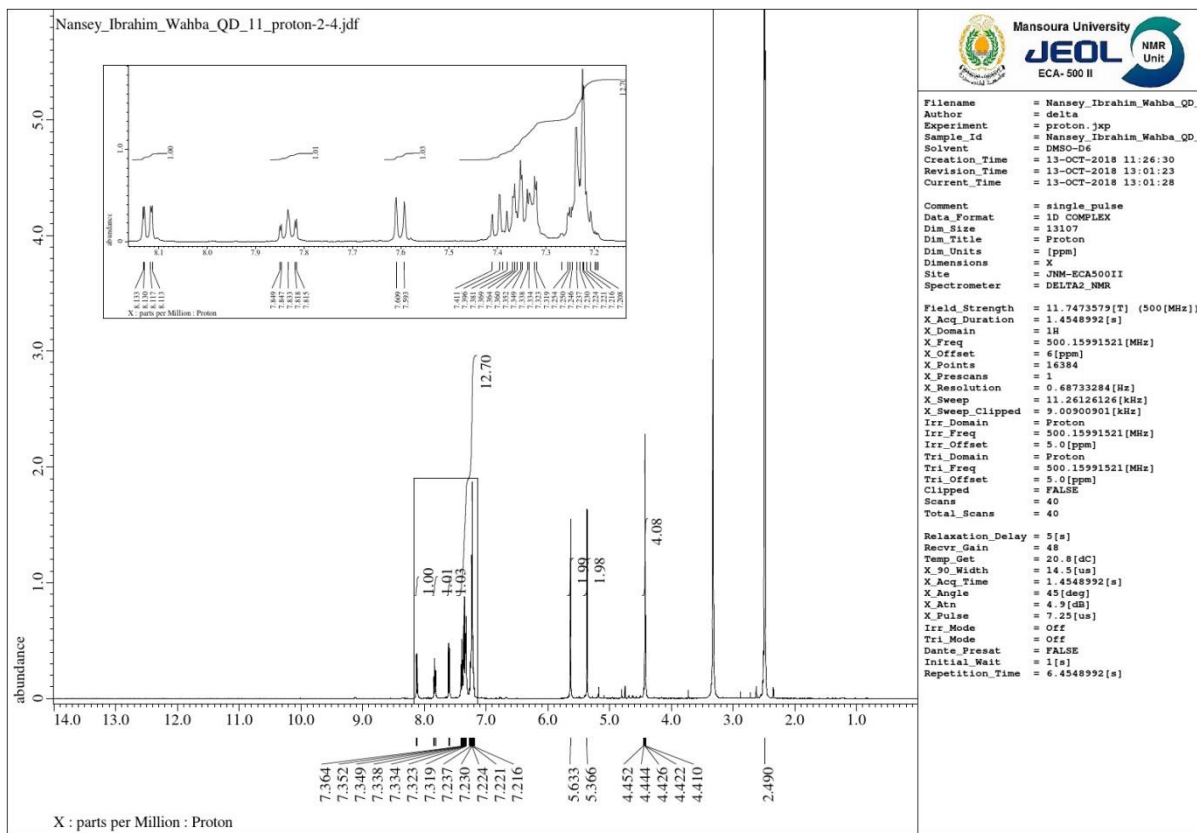
Date: Sep 13 2021



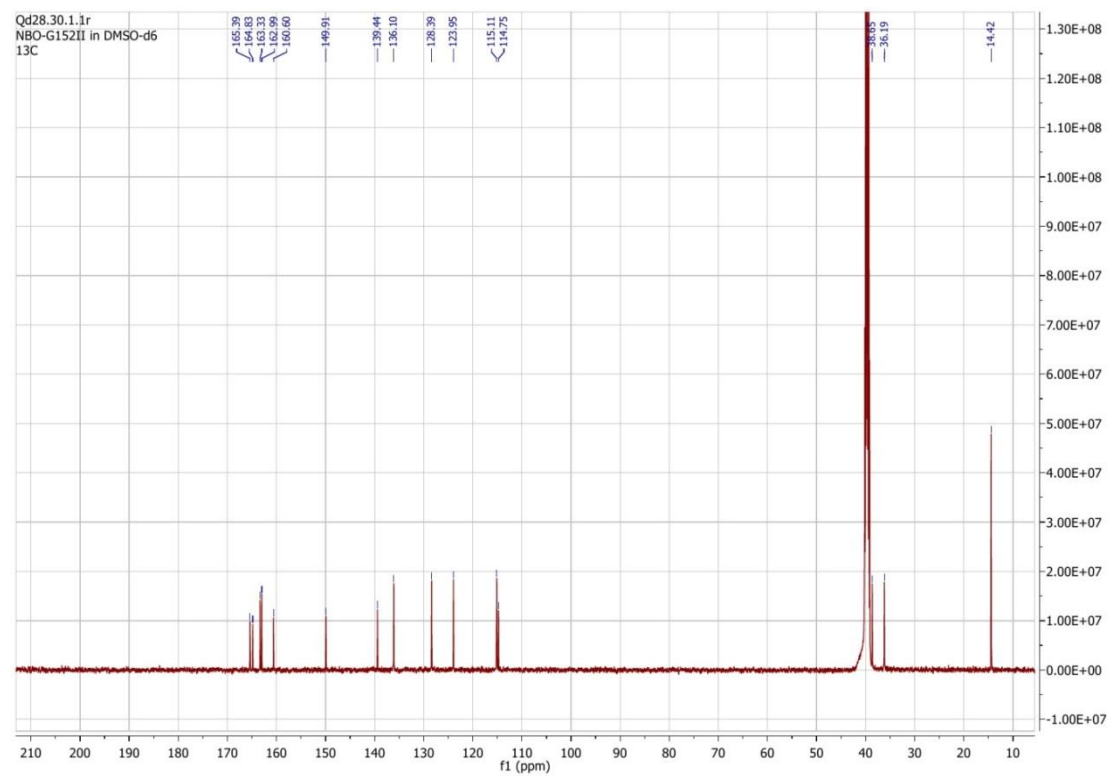
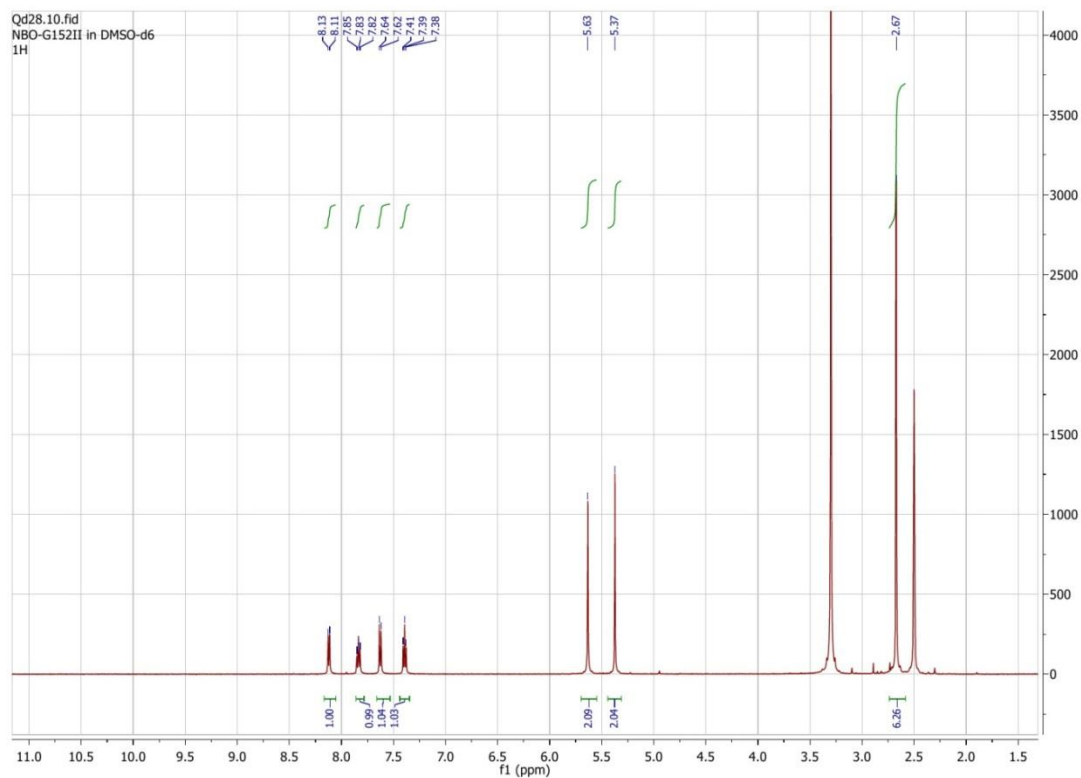
# Comp.7



## Comp.8a

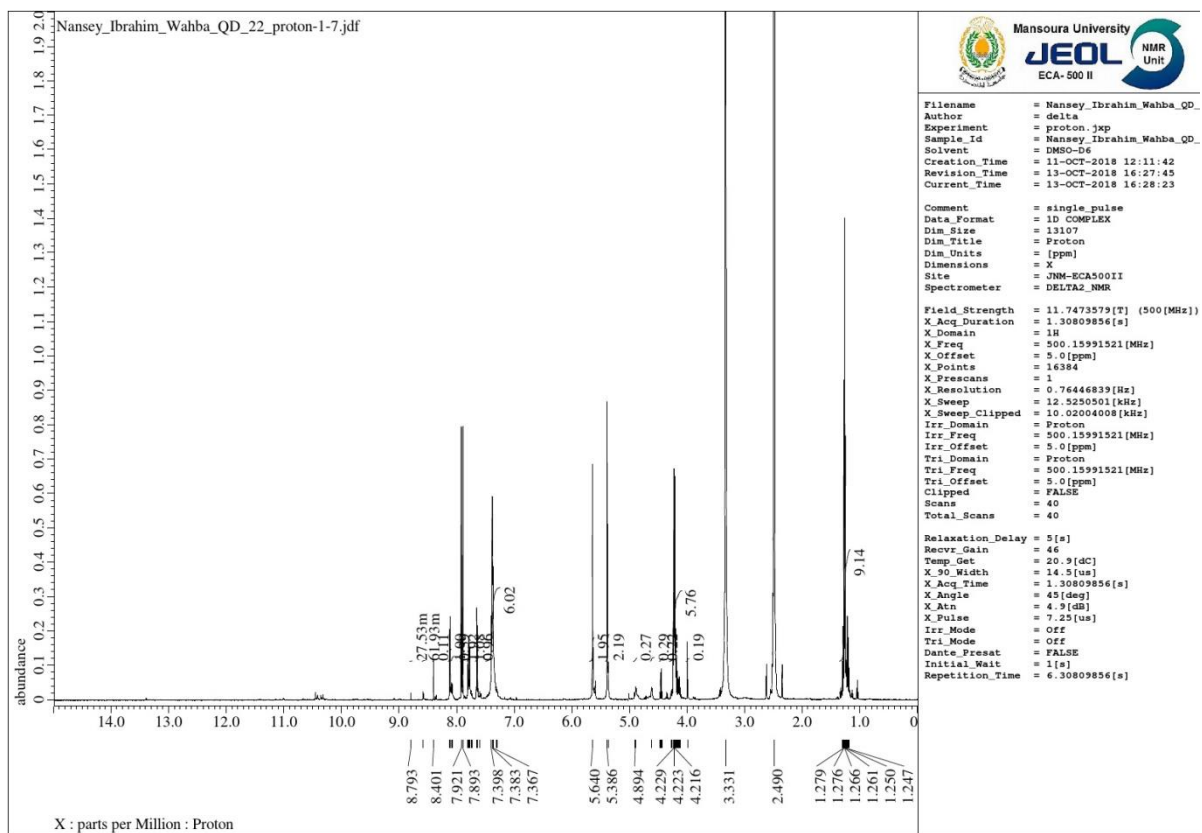


# Comp.8b

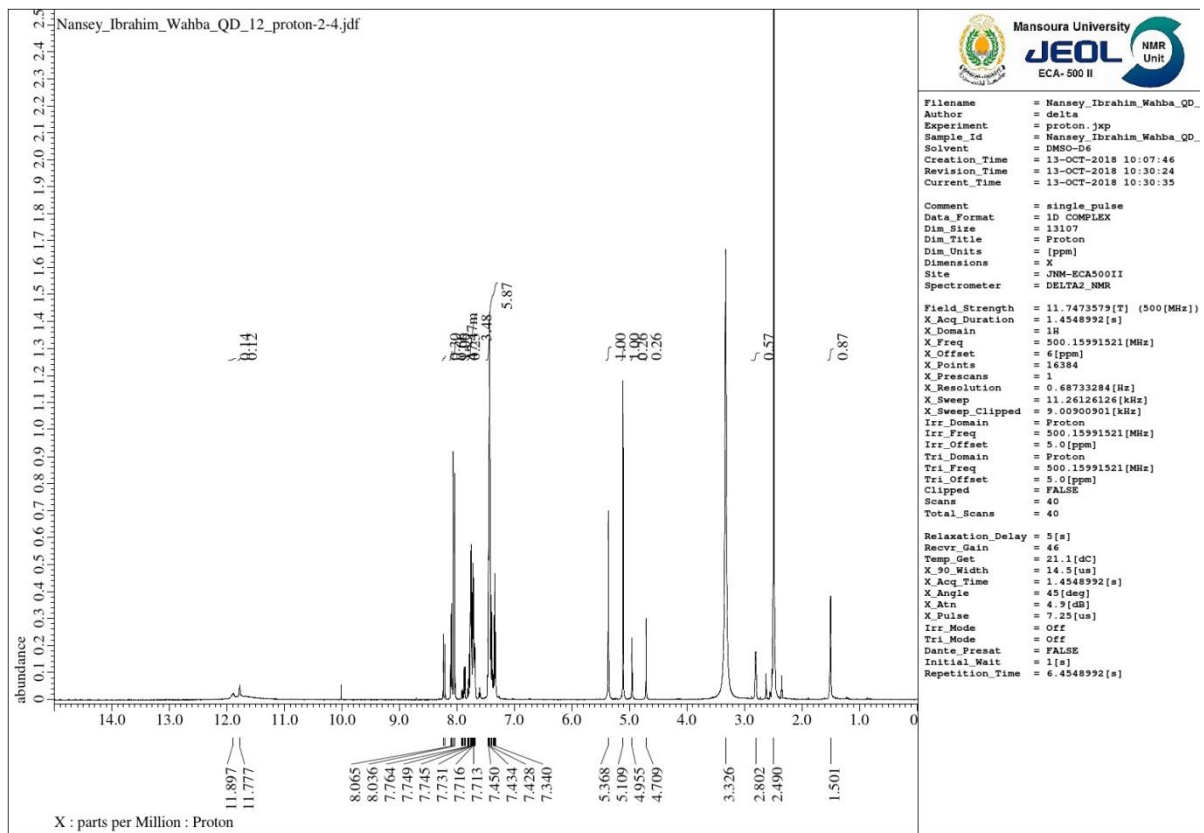




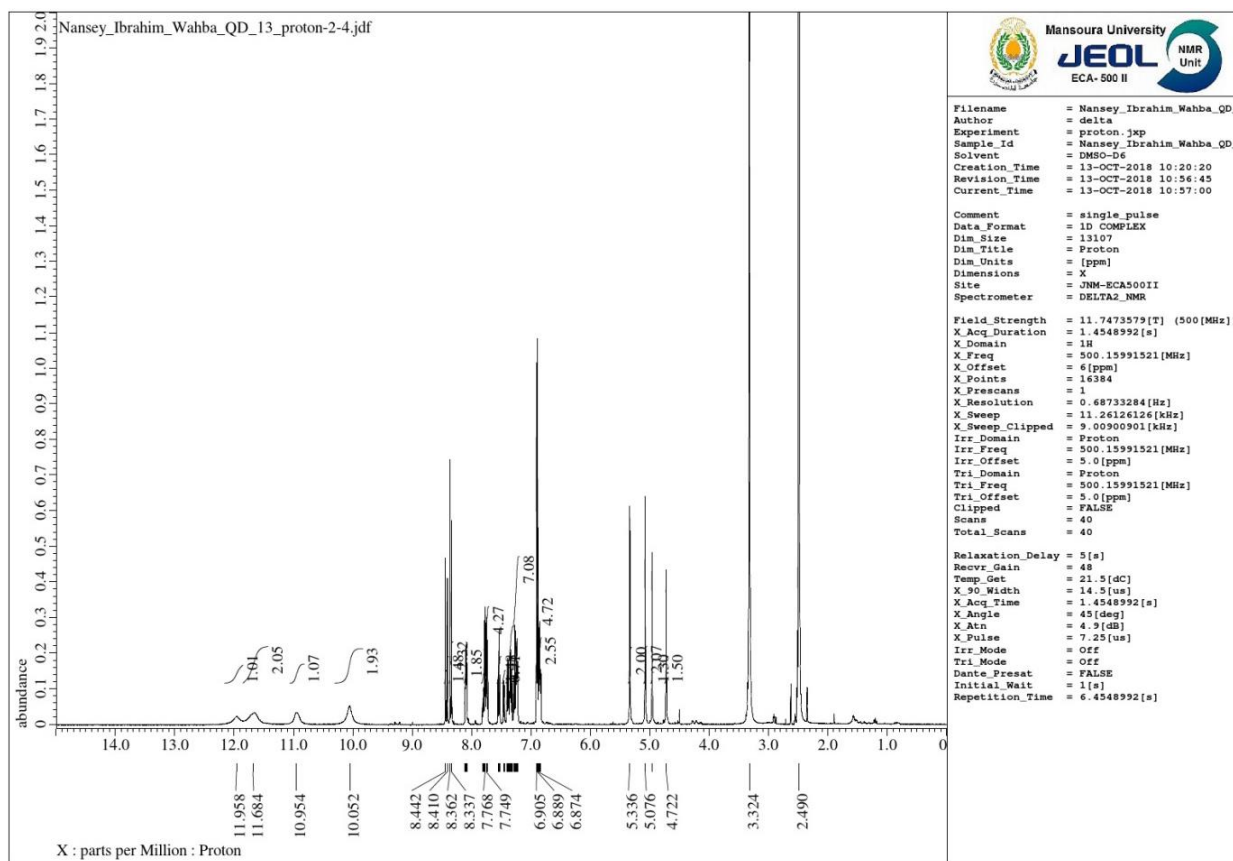
# Comp.9b



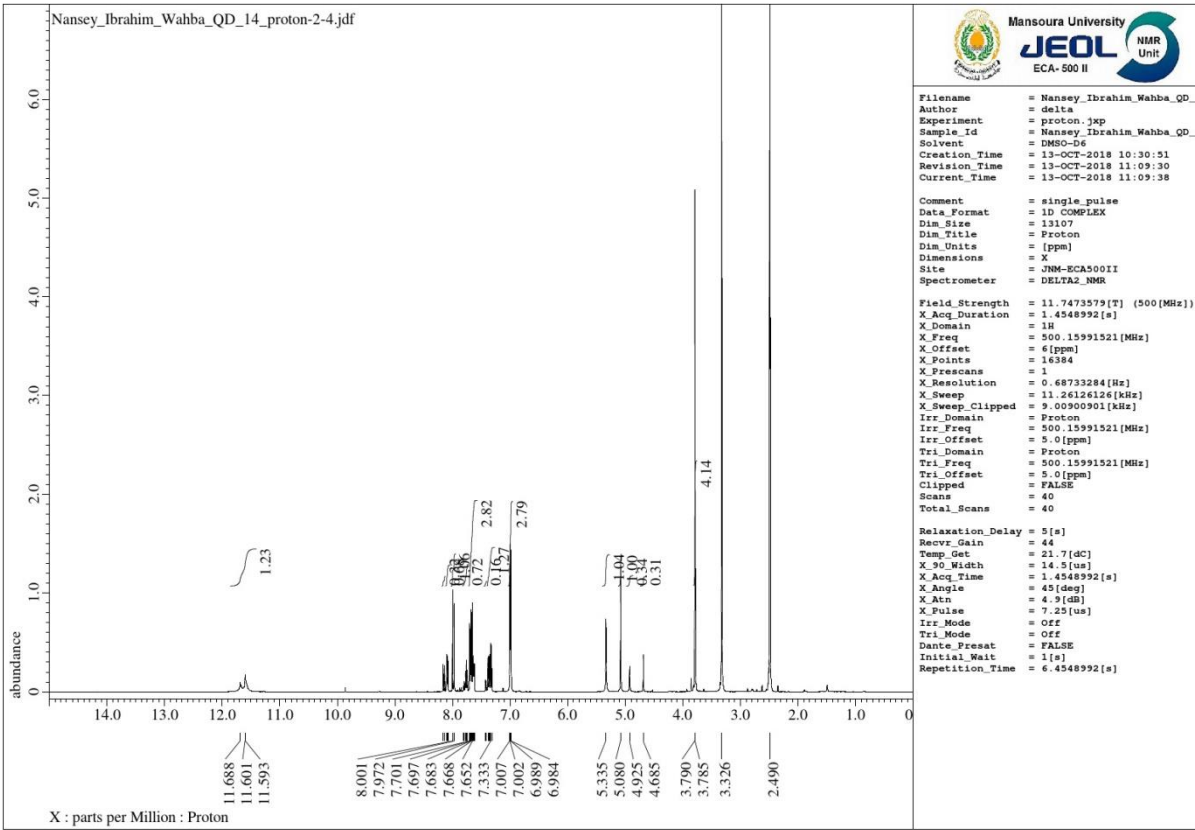
# Comp.10a



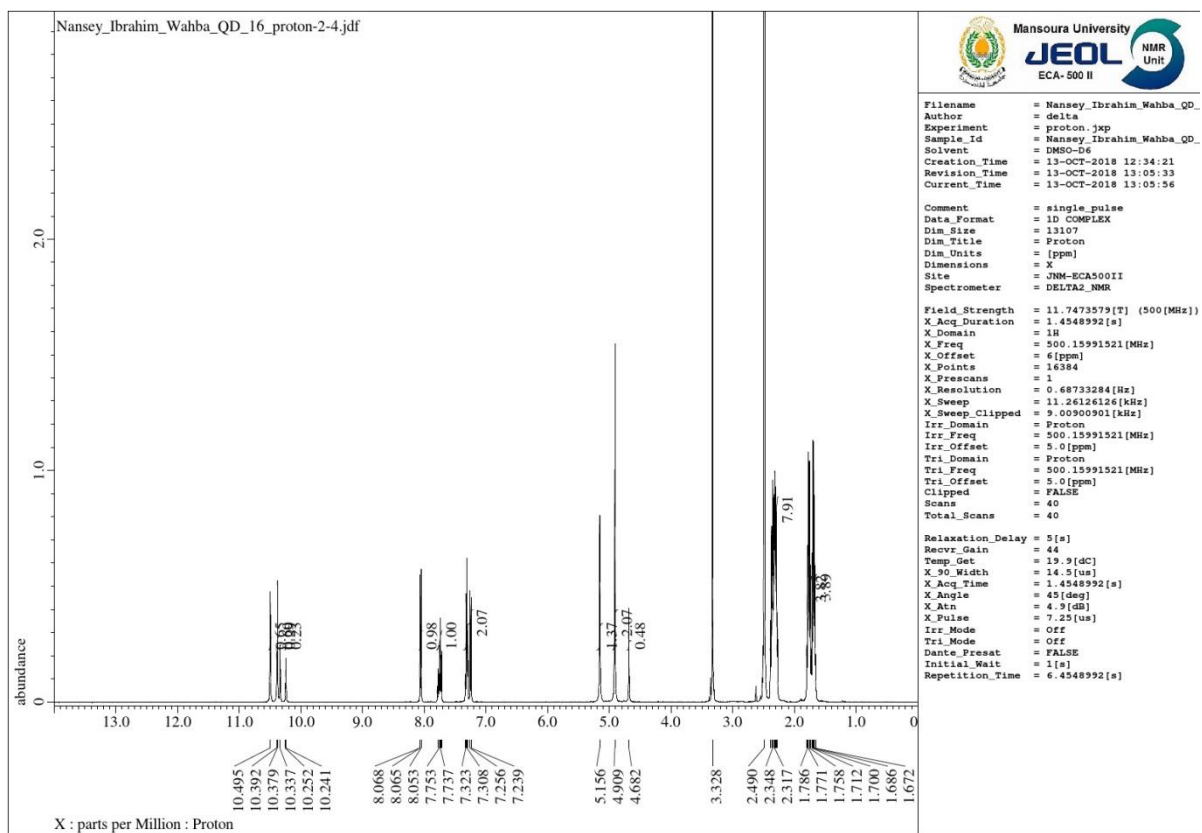
# Comp.10b



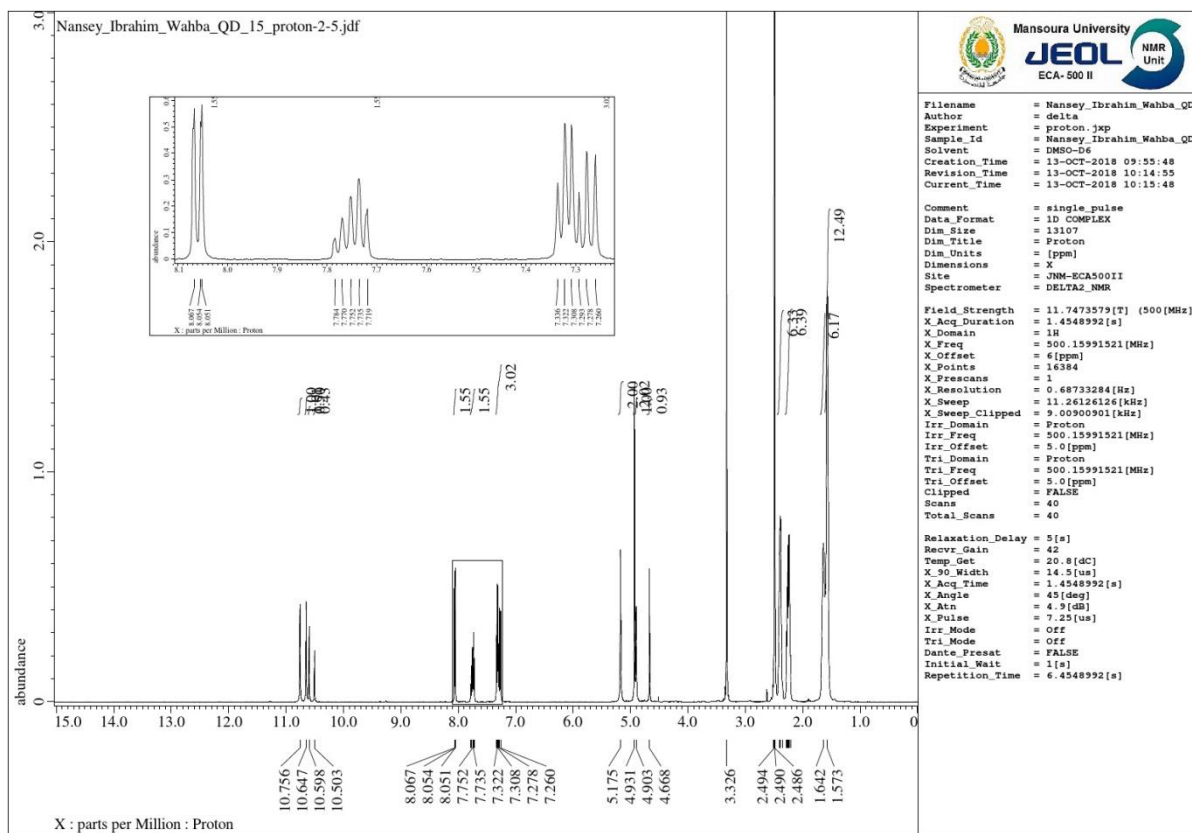
Comp.10c



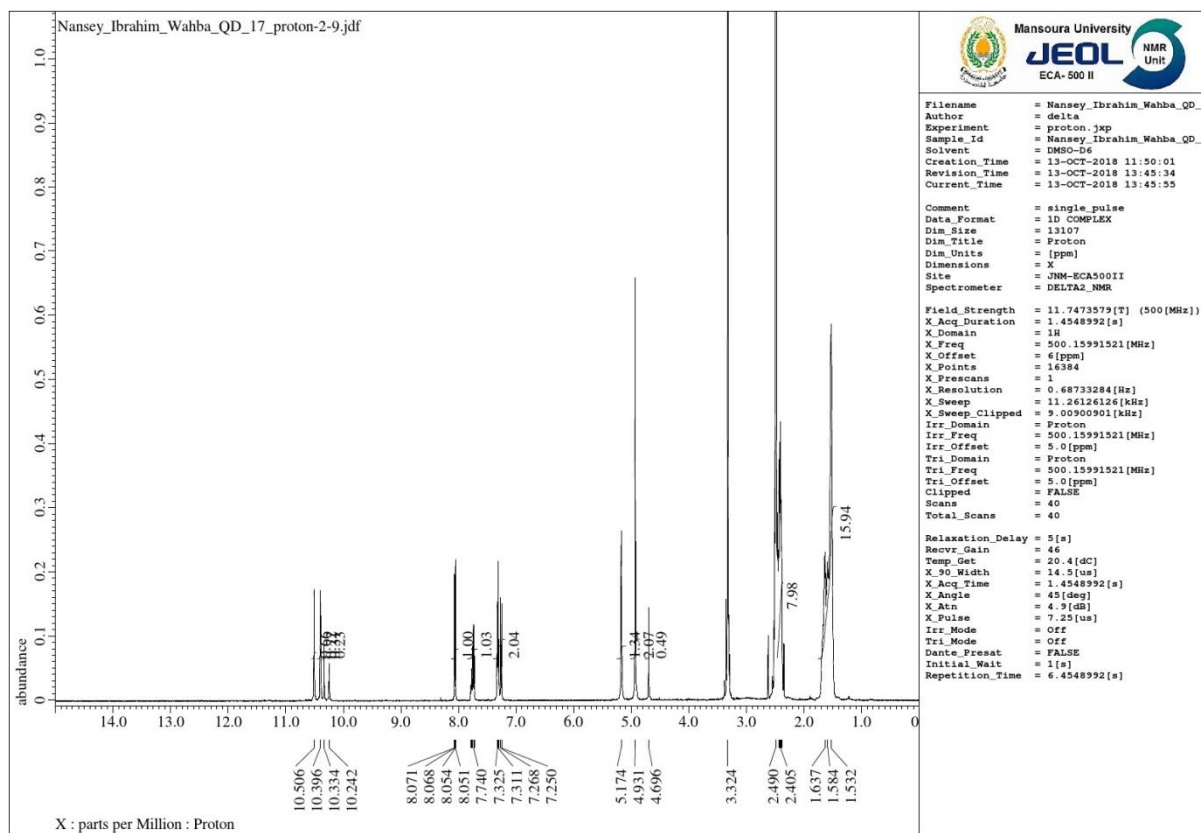
# Comp.11a



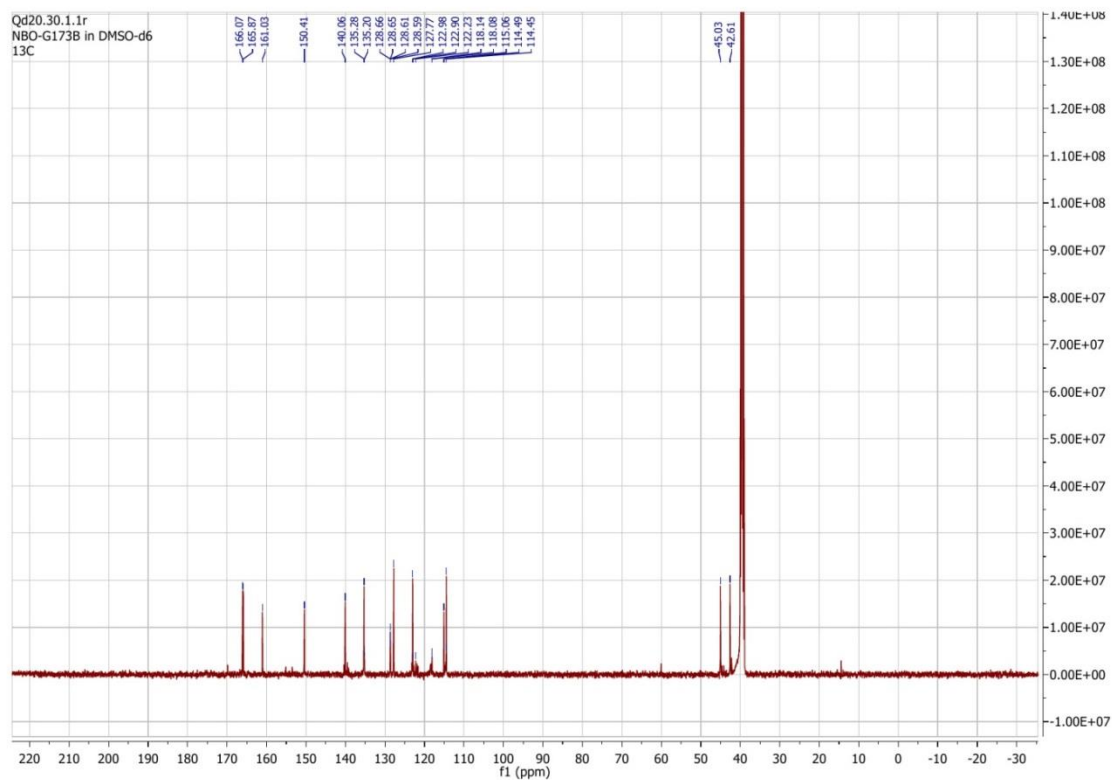
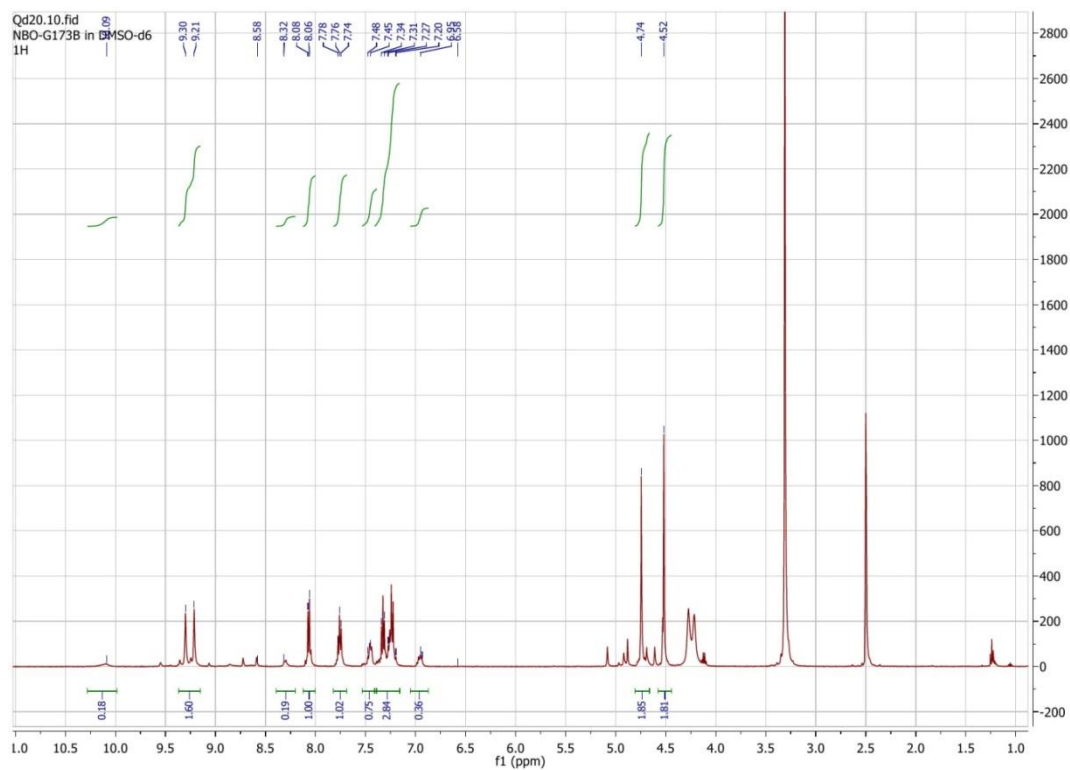
# Comp.11b



## Comp.11c

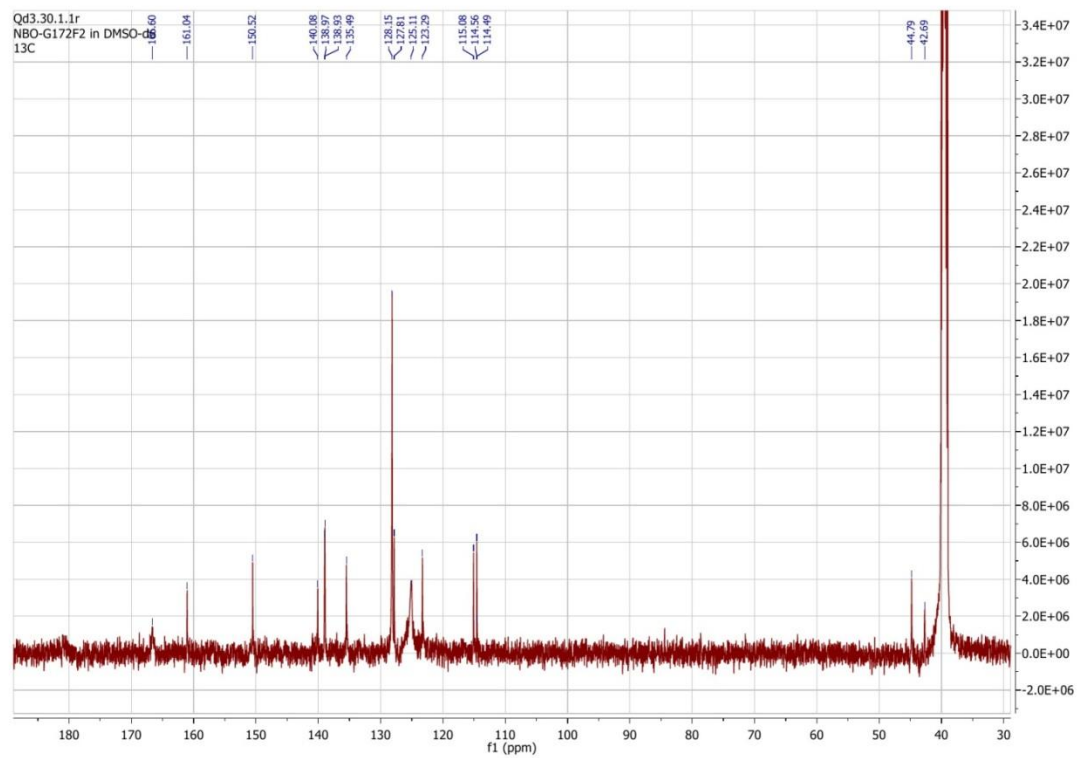
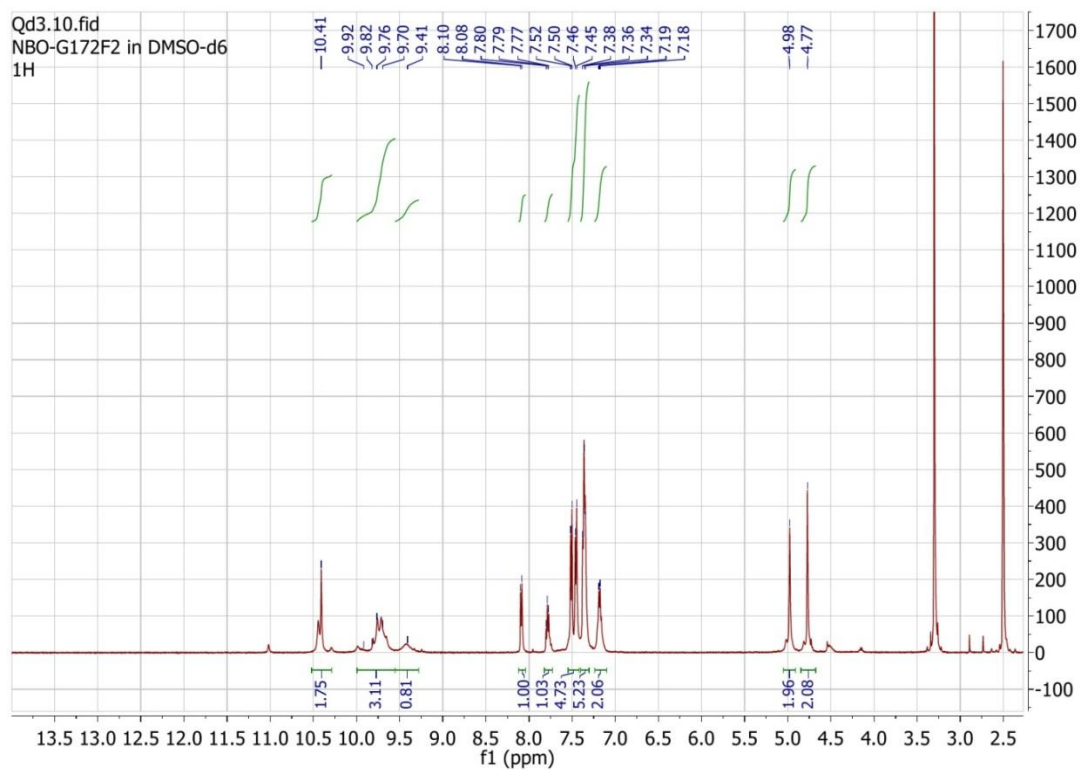


# Comp.12a

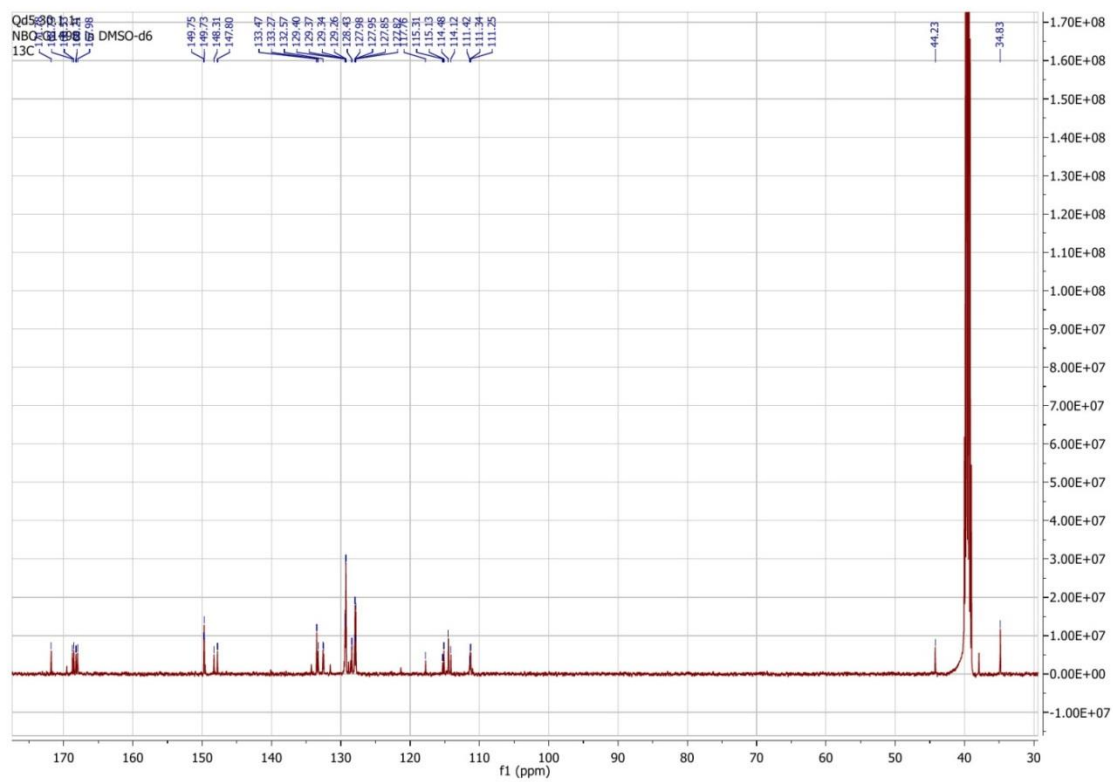
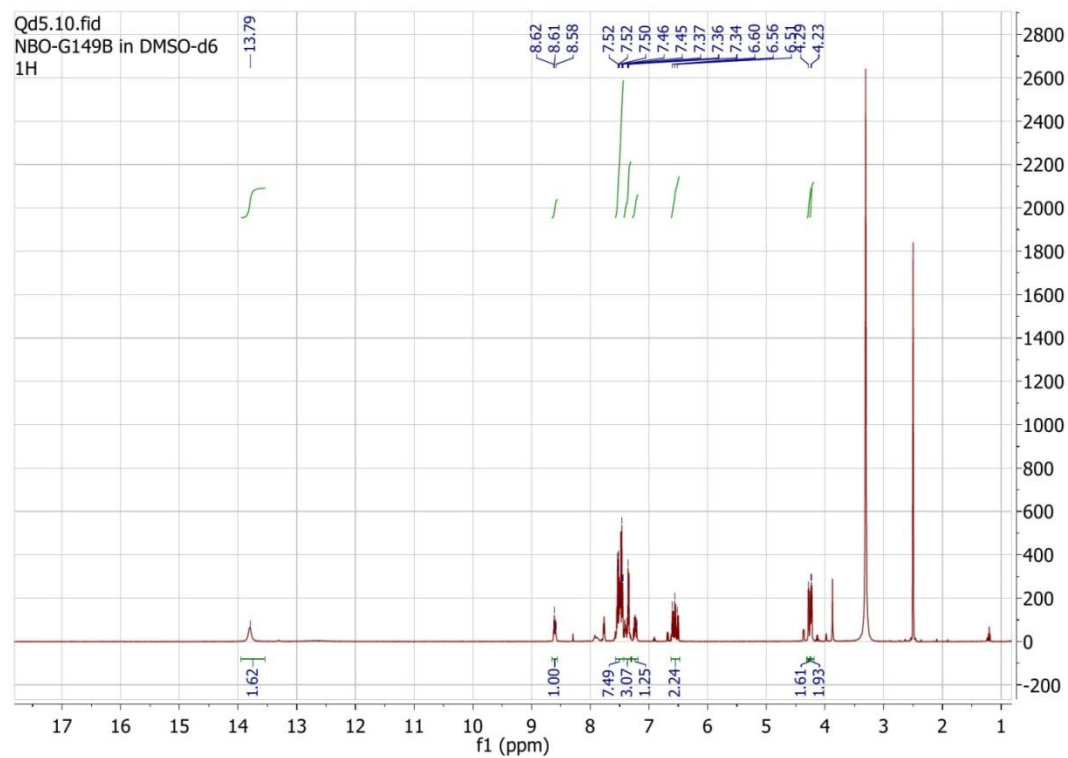




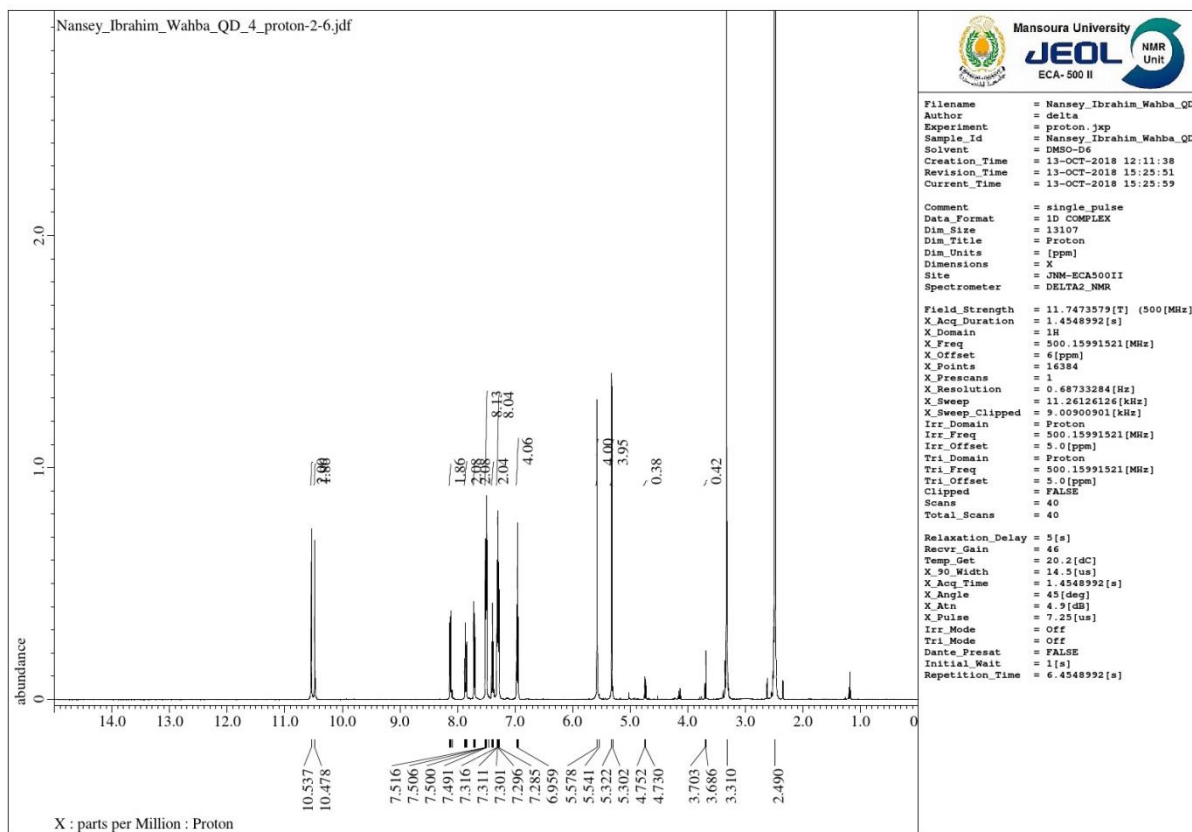
## Comp.12b



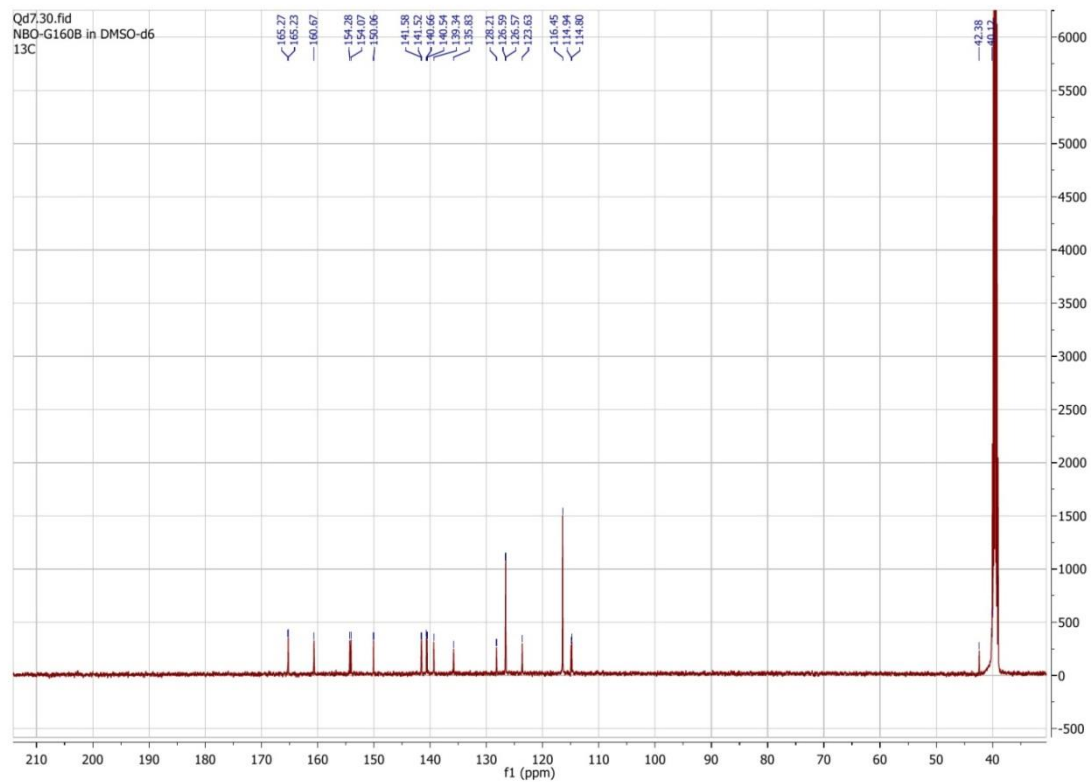
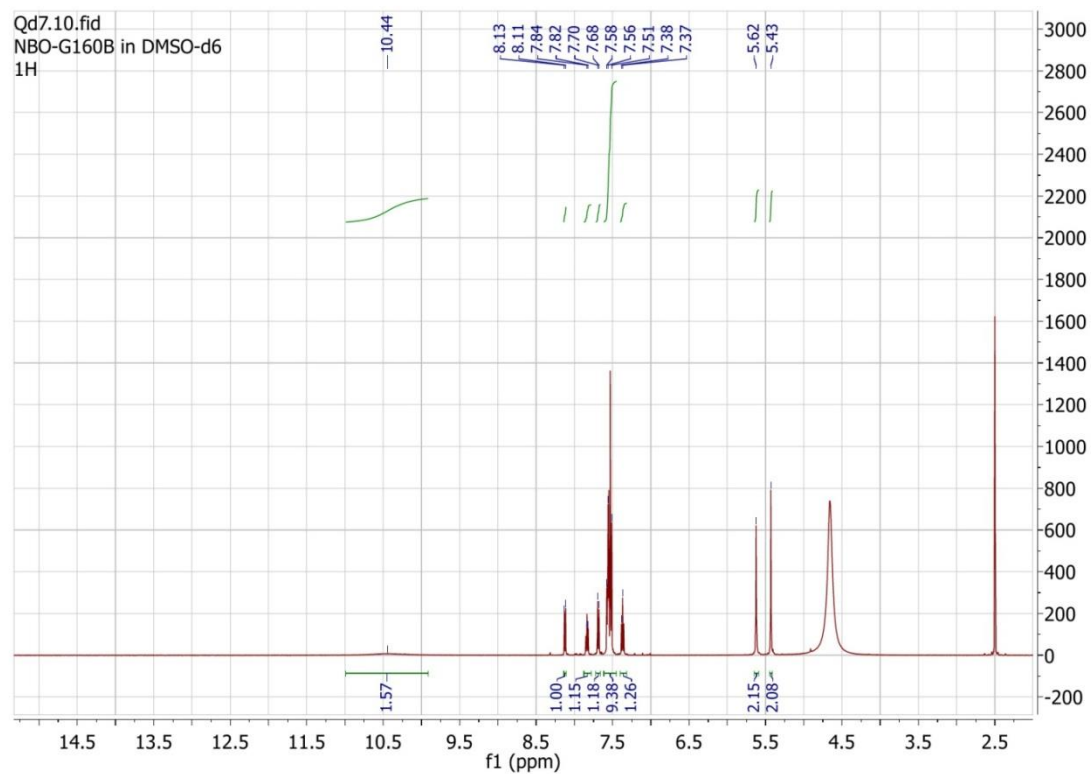
# Comp.13



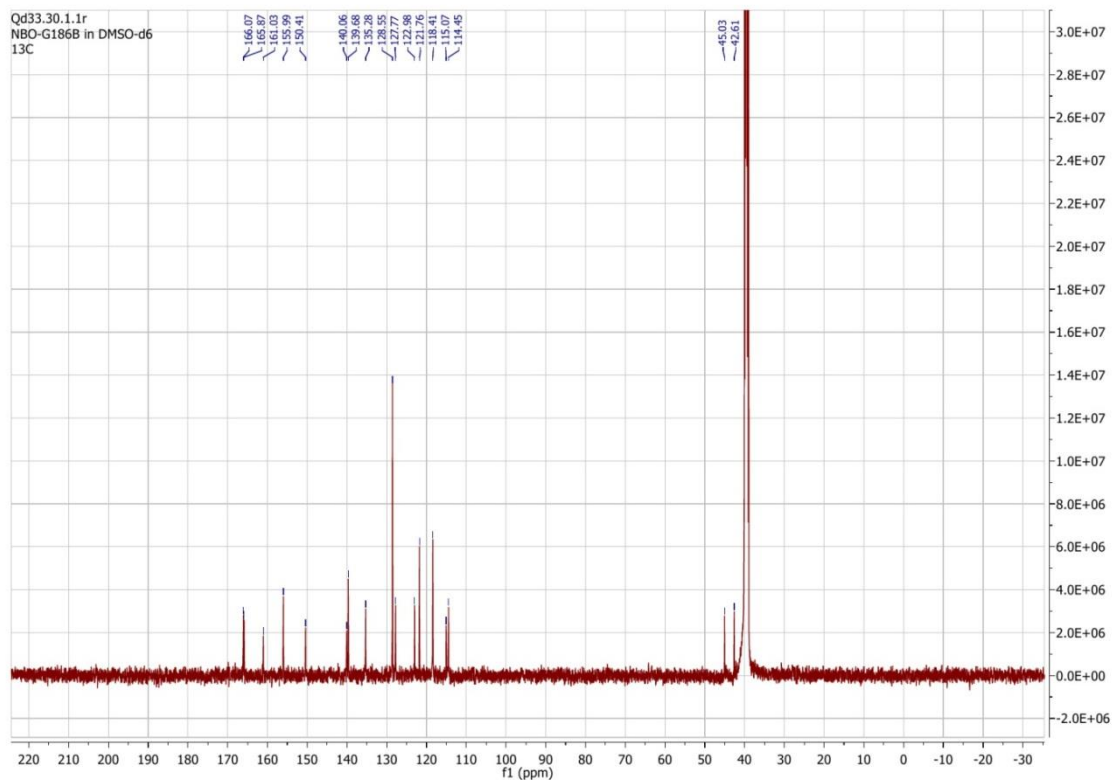
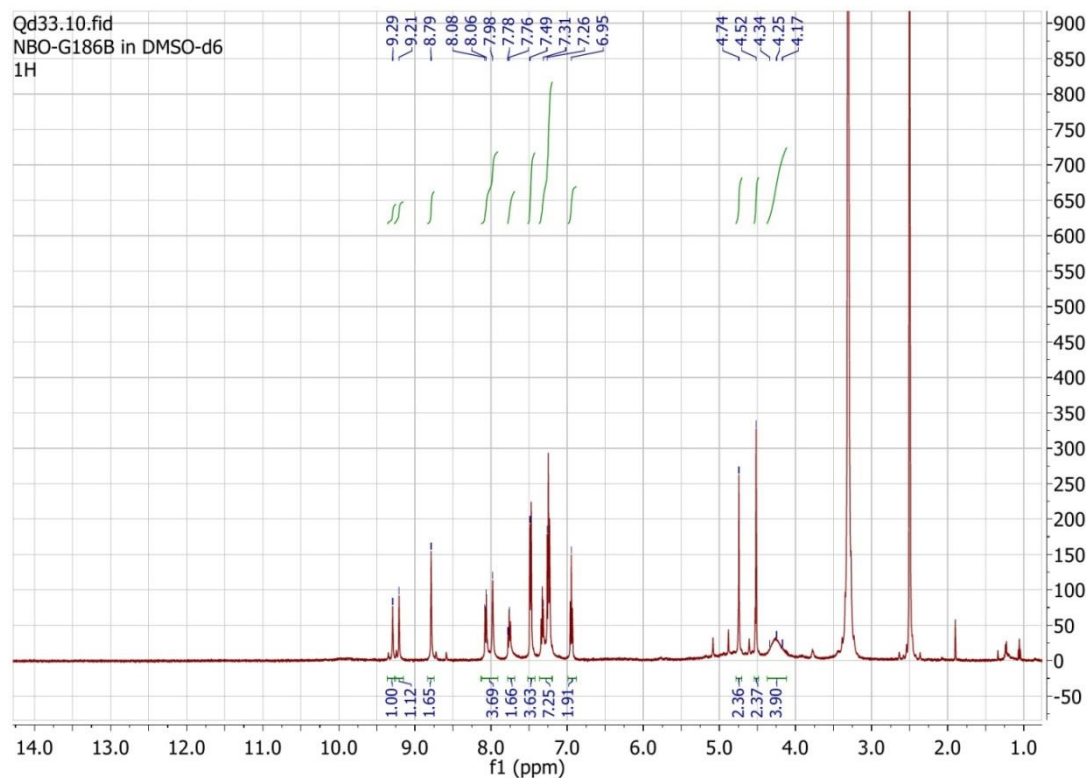
# Comp.14a



## Comp.14b



# Comp.15



# Comp.16

