

Article

Developing Eco-Friendly and Cost-Effective Porous Adsorbent for Carbon Dioxide Capture

Mahboubah Nabavinia ¹, Baishali Kanjilal ², Naohiro Fujinuma ¹, Amos Mugweru ³ and Iman Noshadi ^{1,2,*}

¹ Department of Chemical Engineering, Rowan University, Glassboro, NJ 08028, USA; nabavinim1@students.rowan.edu (M.N.); fujinuma@rowan.edu (N.F.)

² Department of Bioengineering, University of California, Riverside, CA 92516, USA; baishali.kanjilal@gmail.com

³ Department of Chemistry, Rowan University, Glassboro, NJ 08028, USA; mugweru@rowan.edu

* Correspondence: imann@ucr.edu; Tel.: +1-856-818-6102

Abstract: To address the issue of global warming and climate change issues, recent research efforts have highlighted opportunities for capturing and electrochemically converting carbon dioxide (CO₂). Despite metal doped polymers receiving widespread attention in this respect, the structures hitherto reported lack in ease of synthesis with scale up feasibility. In this study, a series of mesoporous metal-doped polymers (MRFs) with tunable metal functionality and hierarchical porosity were successfully synthesized using a one-step copolymerization of resorcinol and formaldehyde with Polyethyleneimine (PEI) under solvothermal conditions. The effect of PEI and metal doping concentrations were observed on physical properties and adsorption results. The results confirmed the role of PEI on the mesoporosity of the polymer networks and high surface area in addition to enhanced CO₂ capture capacity. The resulting Cobalt doped material shows excellent thermal stability and promising CO₂ capture performance, with equilibrium adsorption of 2.3 mmol CO₂/g at 0 °C and 1 bar for at a surface area 675.62 m²/g. This mesoporous polymer, with its ease of synthesis is a promising candidate for promising for CO₂ capture and possible subsequent electrochemical conversion.

Keywords: carbon dioxide; capture; mesoporous polymer; cobalt; nickel



Citation: Nabavinia, M.; Kanjilal, B.; Fujinuma, N.; Mugweru, A.; Noshadi, I. Developing Eco-Friendly and Cost-Effective Porous Adsorbent for Carbon Dioxide Capture. *Molecules* **2021**, *26*, 1962. <https://doi.org/10.3390/molecules26071962>

Academic Editor: Maurizio Peruzzini

Received: 3 March 2021

Accepted: 20 March 2021

Published: 31 March 2021

Publisher's Note: MDPI stays neutral with regard to jurisdictional claims in published maps and institutional affiliations.



Copyright: © 2021 by the authors. Licensee MDPI, Basel, Switzerland. This article is an open access article distributed under the terms and conditions of the Creative Commons Attribution (CC BY) license (<https://creativecommons.org/licenses/by/4.0/>).

1. Introduction

With a significant rise in the average atmospheric CO₂ concentration from levels in the preindustrial age, deleterious effects on global warming and climate change have become visible [1–3]. Consequently, environmental concerns have convinced international bodies and governments to take steps to address policies pertaining to CO₂ emissions. Some of the most remarkable strategies are CO₂ capturing and conversion technologies, such as chemical, photocatalytic [4,5], and electrocatalytic reduction [6–8], for which the first step is efficient CO₂ capture. In many of these technologies, heterogenous conversion catalysts, function [9–11], in the first step as, solid adsorbents and some of these entail materials such as silica [12–14], metal-organic frame (MOFs) [3], and carbon-based materials [14–17]. Some commonly researched carbon-based adsorbent materials entail activated carbon [18], ordered mesoporous polymer/carbon (OMP/OMC) [14,19,20], activated carbon fibers [21,22], graphene [2,17], and graphene oxide [23–25]. Regular pore structure, high surface area, and inexpensive precursors proffer potential advantages in OMP/OMC for CO₂ capture [14,19,20]. The primary bottleneck in designing a feasible and cost-effective carbon capture and conversion process lies in producing a highly efficient carbon capture porous structure which also proffers feasibility of eco-friendly process scale-up along with high capture capacity, in addition to being retrofittable to sustainably convert CO₂ to chemicals and fuels [1,26,27]. In several works, adsorption capacity and activity of adsorbents has been enhanced using functionalization of the catalyst surface and pore lining [14,20,28].

The basicity of nitrogenous functional groups, such as amines, provide sites for enhanced interactions with acidic CO₂. Thus, doping via functionalization with basic nitrogen containing groups is considered as the most attractive methods to capture CO₂ [22,26,29]. Fujian et al. showed that nitrogen not only increased CO₂ capture but also made anchoring metal elements to polymer network feasible [20]. They synthesized an ordered mesoporous phenol-formaldehyde polymer by using hexamethylenetetramine (HMTA) as a source of nitrogen. These structures exhibited high stability, CO₂ capture capacity and selectivity [20]. The anchoring of a transition metal to this framework also makes it probable to speculate its possible application as a CO₂ conversion catalyst, provided a high enough CO₂ capture capacity can be ensured.

Polyethylenimine (PEI) is a multipurpose polymer with amine-containing repeat units, spaced out by the aliphatic ethylene CH₂CH₂ ligand [30]. Due to its high basicity, high amine content, good thermal stability, and low volatility it can be used to produce highly effective and stable functionalized adsorbents [31,32]. Silica [33,34], nanocarbon tube, ordered mesoporous carbon, polymer [31,35] and alumina [36] have been studied with PEI modifications. PEI functionalized Polymethyl methacrylate (PMMA), and polystyrene (PS) [35] showed high CO₂ adsorption capacity. Even though these structures have shown high CO₂ capture capacities their commercial application has not been realized yet. The main hindrance to their commercial application is complicated, multi-stage synthesis method. This not only increases the cost of adsorbent, but also puts significant limitations on the scalability [31,37]. To overcome this, Wang et al. have developed organic amine-mediated synthesis of polymers for CO₂ capturing and energy storage [38].

Solid metal-doped polymers are considered effective and environment-friendly catalyst for carbon dioxide conversion. Their advantageous features include high surface area, thermal stability, and good activity [2]. MOFs have also been reported as good adsorbents and catalysts owing to the active metal sites [3]. Cobalt, zinc, and nickel have been extensively used for this purpose. In addition to enhanced CO₂ capture, these metals also facilitate photo or chemical-electro conversion. The solvothermal method is a common method for metal impregnation into heterogeneous structures which these compounds use to modify organic frame for improving capture and entrapment of CO₂ and its possible subsequent conversion [2,3]. The elimination of multistep catalyst synthesis can pave way to realizable scale-up and hence commercial application.

This paper focuses on the potential of nitrogen-doped mesoporous polymer (MRF), made using PEI, with and without a metal center. The MRFs have been studied for CO₂ capturing for possibility subsequent electrochemical conversion. In this paper, we studied cobalt and nickel doped MR. The effect of metal and PEI concentration on MRF properties such as surface area, pore size, pore structures and morphology, thermal stability were studied. For the synthetic procedure we used resorcinol and formaldehyde as precursors. Contrary to multi-stage synthesis, the one-pot solvothermal method not only decreases the cost of production by practically eliminating the use of high solvent volumes, it also eliminates scale-up barriers. In addition, low temperature of synthesis without the calcination stage makes it an ecofriendly process. The MRFs exhibit superior surface area and a uniform mesoporous structure, as observed from scanning electron microscopy. The elemental analysis map confirmed homogenous metal distribution. This approach also provides the opportunity for producing multi metal centered catalyst structures.

2. Results

2.1. Chemical Structure and Thermal Stability

The results of elemental analysis, on various compositions, is presented in Table 1. EDS elemental analysis of these compositions is illustrated in Supplementary Materials Figures S1 and S2. Elemental mapping results, as shown in Table 1, confirm that an increase in PEI concentration corresponded to an increase nitrogen content. Figures S1 and S2 underscore uniformity of distribution of cobalt and nickel in the test sample. PEI plays an important role in developing a uniform mesoporous structure. Nitrogen is indicative of the

presence of the amine group of the branched PEI structure. The presence of nitrogen helps to increase nanoporosity by tethering to the Co or Ni nucleation centers while participating in the crosslinking kinetics on the other. While the nitrogen content in H-RF is expected to be double that of M-RF, it may be assumed that some of the excess PEI remains adsorbed in the porous structure leading to the inordinately high nitrogen content as seen in Table 1. The additional affinity of Ni to the PEI nitrogen can be assumed to play a part in affecting the porous structure of the formed MRFs and this is discussed in some detail in a later section. The incorporation of Co with progressively increasing content in reaction mixture is quite representative of the expected ratios of incorporation. In the Ni3-M-RF, the experimental results show that there is only 0.7 wt% of Ni.

Table 1. Elemental analysis of various catalyst compositions (all figures in %weight).

Sample	Carbon	Oxygen	Nitrogen	Cobalt	Nickel
RF	62.6	31.4	0	0	0
M-RF	77.6	20.1	2.3	0	0
H-RF	60.7	28.9	10.4	0	0
Co1-M-RF	60.9	31.3	7.4	0.4	0
Co3-M-RF	51.9	37.8	9.0	1.3	0
Ni3-M-RF	73.2	23.4	2.7	0	0.7
Co5-M-RF	54.67	37.12	5.42	2.79	0
Co3-H-RF	63.9	33.3	2.0	0.8	0

Fourier transform infrared (FTIR) spectra was used to characterize the chemical structures of synthesized N-OMPs and these are shown in Figure 1a–d. While Figure 1a shows the spectrum of a general resorcinol formaldehyde resin, Figure 1b shows the FTIR spectra of the MRF made with 1.96% PEI. In Figure 1c (Co3-M-RF), the spectra of MRF with 1.96% PEI and 1.3%Co is shown as an example, while Figure 1d (Ni3-M-RF) shows the corresponding resin with 0.7%Ni. The change in the positions of the characteristic peaks with a change of the metal type at the center of the complex is insignificant. This points to the fact that there is very little difference in the bonding characteristic with the metal center. In the FTIR spectra, characteristic peaks associated with phenolic resins are observed. These entail absorption bands of benzene rings at $800\text{--}900\text{ cm}^{-1}$, the bending vibration of the C-O bond at 1157 cm^{-1} , the absorption band of the methyl group at 1219 cm^{-1} , the absorption bands of the methylene bridge at 1445 and $2827\text{--}2963\text{ cm}^{-1}$, and the stretching vibration of the O-H bond at $3200\text{--}3400\text{ cm}^{-1}$. Besides, the characteristic peaks associated with nitrogen species are also observed. These entail the stretching vibration of the C-N bond at 1110 cm^{-1} , the bending vibration of the N-H bond at 1605 cm^{-1} , and the stretching vibration of the N-H bond at $3400\text{--}3500\text{ cm}^{-1}$.

The thermal stability of the MRFs was evaluated via thermal analysis by heating the samples in an inert atmosphere. To remove moisture, the samples were warm up to $100\text{ }^{\circ}\text{C}$ and then the weight loss measurement started at $50\text{ }^{\circ}\text{C}$ to $600\text{ }^{\circ}\text{C}$ under a constant nitrogen flow rate. The various compositions differed substantially in their thermal stability profiles and this is shown in Figure 1d–f. Thermal stability of RF is slightly better than M-RF as seen in Figure 1d. It could be construed that the presence of the amine functionality causes a more rapid breakdown of the polymeric structure with temperature due to a catalytic action. The thermal stability of 3% Co is superior to both that containing 1% and 5% Cobalt contents. The MRF with while Co3-M-RF showed more thermal stability compared to a composition containing nickel as the metal center.

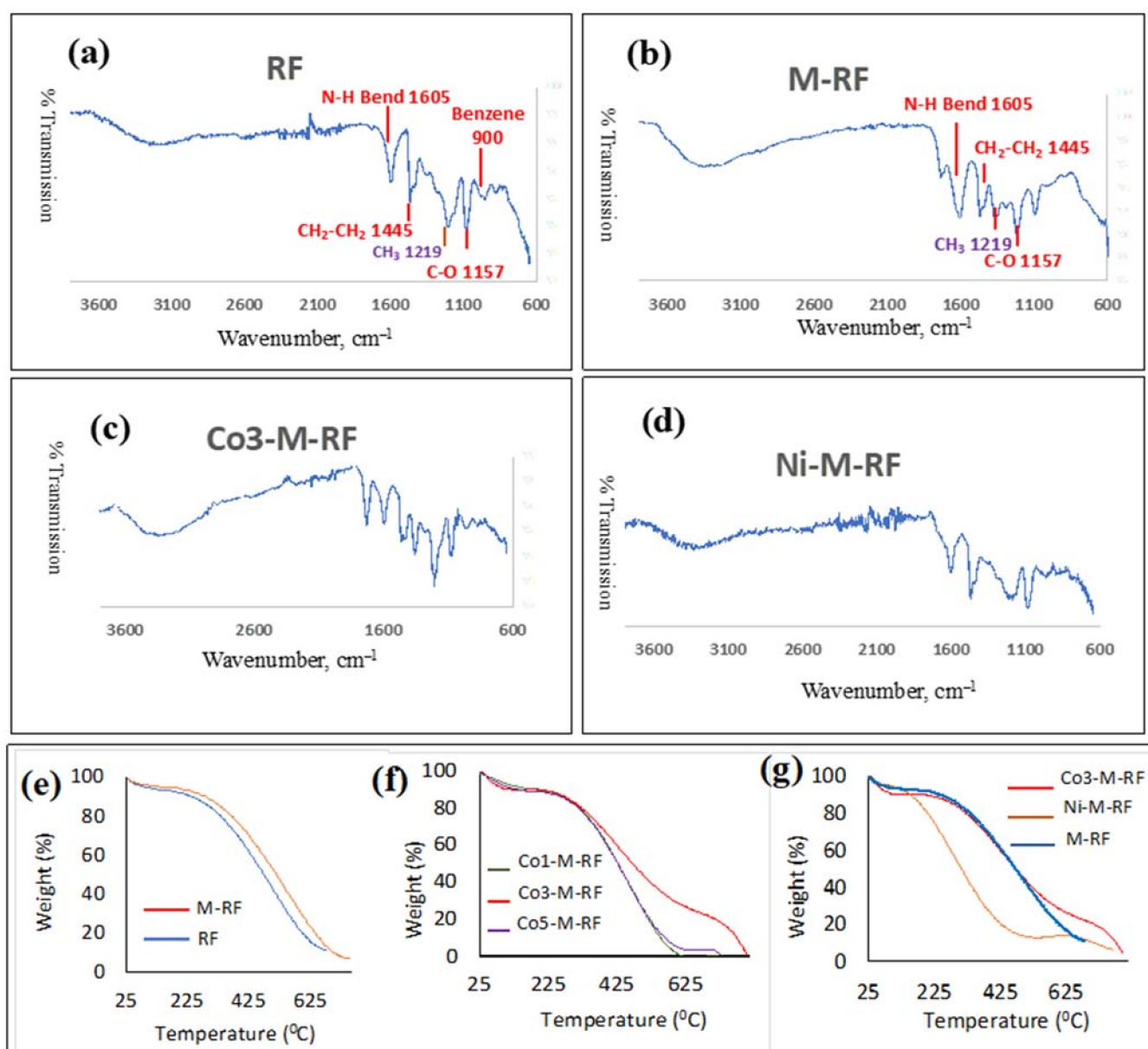


Figure 1. FTIR spectra (a) RF resin (b) Mesoporous catalyst without metal centers (c) MRF with 3%Co (Co2-M-RF) (d) MRF with Ni (Ni3-M-RF), Thermogravimetric Analysis (e) RF and MRF without metal centers (f) MRF with progressively increasing Co content (g) Comparison of MRF with MRF-3% Co and MRF with Ni.

2.2. Surface Area and Pore Structure

The nitrogen adsorption/desorption isotherms were obtained by NOVA Tech at 76 K and plotted in Figure 2. The surface area for all samples was calculated by multipoint BET model based on adsorption plot and showed in Table 2. The detailed porosity parameters of pore size volume and diameter were calculated by BJH model and are summarized in this table. Varying the concentrations of PEI, cobalt, and metal salt has a visible influence on the textural and surface morphologies of the MRFs. The porosity can be significantly improved by varying the PEI and cobalt concentrations, however the effect is not linearly correlated to their concentration.

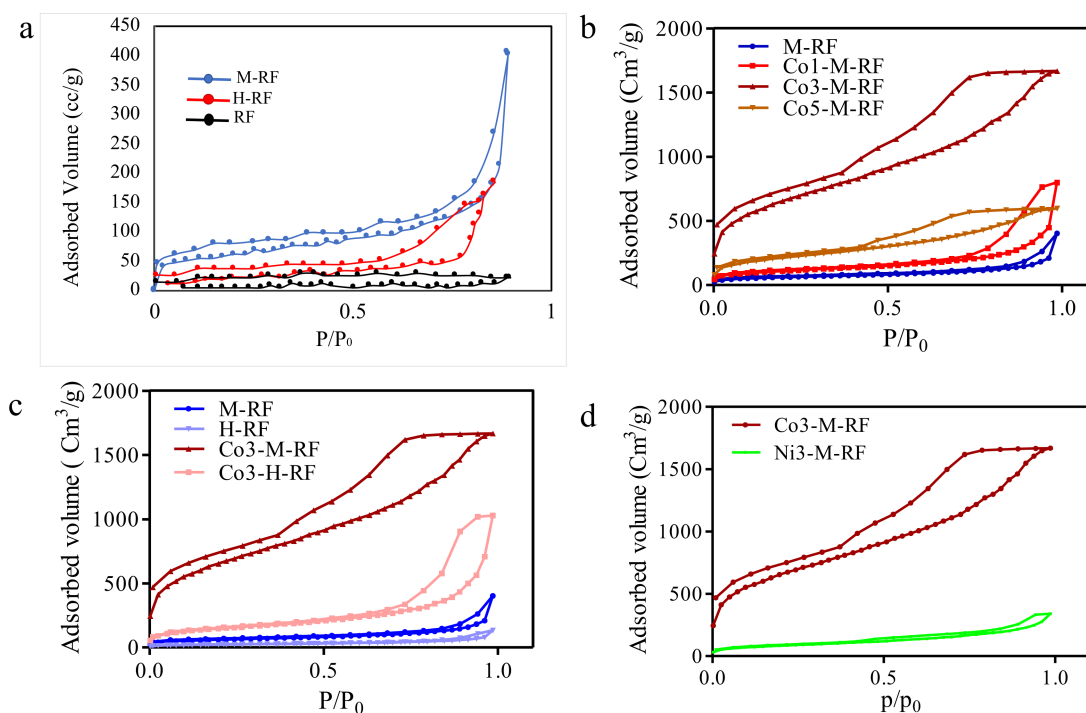


Figure 2. N₂ adsorption/desorption isotherms of (a) RF with varying PEI concentration (0%, 1.96% and 3.98% by weight), (b) MRFs with varying cobalt concentrations (0%, 1%, 3% and 5% Co (III) acetylacetonate by weight), (c) Cobalt doped RF made with varying PEI (1.96% and 3.98%) and Cobalt concentration (0%, 3% and 5% Co(III) acetylacetonate by weight), and (d) Metal -doped M-RF with 3% Co (III) acetylacetonate by weight and 3% Ni(II) acetylacetonate by weight.

Table 2. Surface area and pore size distributions of various catalyst based on BJH model. (Standard deviation was within (± 3 –4%) of the average values).

Sample	BET Data Surface Area (m ² /g)	Mesoporous Based on BJH Model		
		Surface Area (m ² /g)	Pore Volume (cm ³ /g)	Pore Size Radius (nm)
RF	19.67	13.53	0.041	
M-RF	325.99	207.01	0.35	1.62
H-RF	212.13	80.07	0.34	2.39
Co1-M-RF	220.12	108.11	1.14	1.99
Co3-RF	149.80	149.80	0.25	1.89
Co3-M-RF	977.11	226.09	1.83	
Co3-H-RF	342.22	123.29	0.15	
Co5-M-RF	375.19	98.73	0.71	1.53
Ni3-M-RF	264.82	87.08	0.20	1.69

Increasing PEI concentration, as seen in the metal-free mesoporous polymers, from 0% (RF) to a content of 1.96% (M-RF) increases the BET surface area from 19.67 m²/g to 325.99 m²/g. A further increase in the PEI content to 3.98% (H-RF) decreases it to 212.13 cm³/g. This is shown in Figure 2a. As per the stoichiometry of RF-PEI network formation reaction, any amount of PEI that is beyond limit of crosslinking, determined by relative component stoichiometries, will simply remain unreacted. This unreacted PEI enter the pores of the mesoporous crosslinked network in the form of a liquid and blocks them. This in turn reduces available surface area and is reflected in the BET experiment.

The results of N₂ adsorption/desorption isotherms are shown in Figure 2a–d. With 3% Cobalt doping in the MRF containing 1.96% PEI, the BET surface area is seen to increase to 977.111 m²/g. This composition is designated as Co3-M-RF. With 1% Co the BET surface area decreases significantly. With a much higher 5% Co doping there is an insignificant change in surface area compared to the undoped MRF structure as well as that of Co3-M-RF. The surface area increases much faster with Cobalt doping in the

MRF made with medium PEI, MRF (1.96%) than that made with higher amounts of PEI, HRF (3% doping). With M-RF, for the Co3-M-RF composition, the surface area by more than 200% over an undoped samples. While with a higher PEI loading (H-RF), the same amount of Co increases the surface area by only 61.3%. The doping using Co may be thought to induce a morphological nucleation of the polymer which, in tandem with the crosslinking kinetics forms an optimized structure with the maximum possible surface area. The nucleation and cross-linking have their own kinetic rates which appear to be experimentally optimized at 3% Co content, neither lower, nor higher percentage of Co doping see to have obtained the same optimization to maximization of surface area and this is seen in Figure 2b. In Figure 2c, the significantly higher surface area of the polymer with 3% Co and 1.96% PEI, merely underscores the points made above of the optimized level of Co and PEI incorporation to achieve the best possible results. The shape of the curves correlates very closely to type IV isotherms that are typical in mesoporous solids. The adsorption on mesoporous solids occurs via multilayer adsorption which is followed by capillary condensation that leads to the hysteresis loop as is seen in the figures. The capillary condensation that takes place in the mesopores can somewhat limit uptake at higher partial pressures. However, in the case of RF, the obtained isotherm showed Type IV and V indicating a greater predominance of capillary condensation.

The SEM images of various MRFs was illustrated in Figure 3a–h, confirmed uniform microporosity of samples contained PEI. The SEM images reflect the results and observations in the figure and table above. The spherical morphology of RF (Figure 3a) is another proof for the importance of PEI in developing a uniform morphology with an interconnected framework, which can be seen in subsequent images. The immobilization of cobalt increases pore interconnection with consequent enhancement in surface area, as mentioned above. It is obvious that excessive incorporation of either PEI or Co destroys the clean morphology that is obtained with 1.96% PEI and 3% Co, which again is testament to the empirically obtained optimization of the nucleation and crosslinking reactions. The SEM images also affirm that Ni (Figure 3h) is not as effective in inducing the morphological optimization as is seen with Co doping.

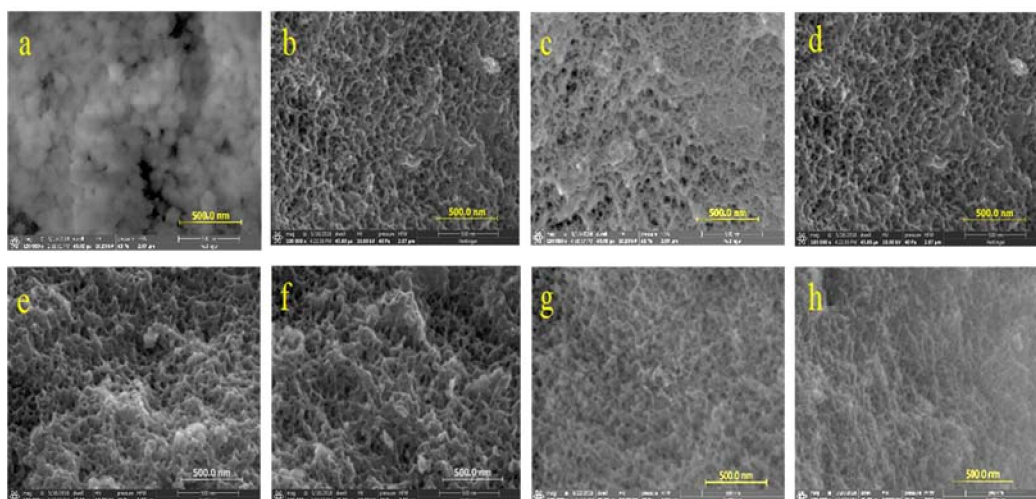


Figure 3. SEM of various samples: (a) RF (b) M-RF (c) Co1-M-RF (d) Co3-M-RF (e) Co5-M-RF (f) Co3-H-RF (g) H-RF (h) Ni3-RF.

2.3. Carbon Dioxide Adsorption

The carbon dioxide adsorption results are presented in Figure 4a–f. The MRFs were utilized as adsorbents for CO₂ adsorption at 25 °C or 0 °C and 1 bar. CO₂ adsorption isotherms of MRFs are shown in Figure 4a,d. The CO₂ uptake at 1 bar is presented Figure 4b,c,e,f.

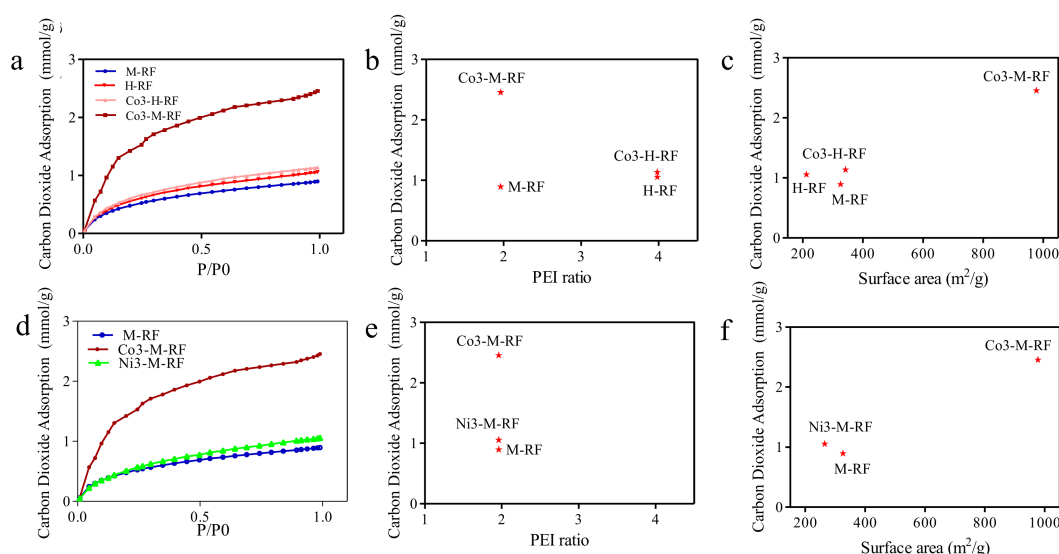


Figure 4. Carbon dioxide adsorption of various composition (a) at 0 °C, vs. P/P_0 (b). CO_2 adsorption at 0 °C vs. PEI % weight in MRF (c) CO_2 adsorption at 0 °C vs. Surface area (d) Carbon absorption at 25 °C vs. P/P_0 (e) CO_2 adsorption at 25 °C vs. PEI % weight in MRF (f) CO_2 adsorption at 25 °C vs. Surface area.

The adsorption results with Co3-M-RF shows the best adsorption results. One primary reason is that the surface areas of this sample was seen to be higher than other samples. The high PEI containing samples perhaps had quite a bit of the pores blocked by the presence of excess PEI in liquid form blocking gaseous movement through the mesopores and hence its subsequent adsorption. This is reflected in Figure 4b. A higher PEI content is expected to attract more CO_2 due to its alkaline disposition. However, the reality remains that the compositions with higher PEI content result in lower surface area due to unreacted PEI plugging pores and hence causes diminished adsorption. The adsorption of CO_2 is a balance between the amount of surface area proffered and the alkalinity of the surface area functionality. The importance of surface area available for adsorption is underscored in Figure 4c where the composition with the higher surface area adsorbs the higher amount of CO_2 despite having lower content of PEI compared to H-RF structures. M-RF, which has a low surface area ($325.99 \text{ m}^2 \cdot \text{g}^{-1}$) and pore volume ($0.35 \text{ cm}^3 \cdot \text{g}^{-1}$), exhibits a CO_2 uptake of $1.15 \text{ mmol} \cdot \text{g}^{-1}$. The Cobalt doped sample Co3-M-RF also shows a high CO_2 adsorption capacity ($2.5 \text{ mmol} \cdot \text{g}^{-1}$ at 0 °C and 1 bar). Ni3-M-RF displays a CO_2 adsorption capacity of $1.05 \text{ mmol} \cdot \text{g}^{-1}$ at 0 °C, 1 bar. Previous research demonstrates that resorcinol-formaldehyde resin exhibit stronger Lewis basicity, and generally have good CO_2 capture capabilities on their own. Here we see that the CO_2 capture capability rises when a doping metal center is introduced. In Figure 4e,f, despite comparable amount of PEI, the sample with cobalt doping has superior CO_2 adsorption because it has a much higher surface area. When the concentration of PEI is increased from 0 to 3.98%, there is very little concomitant increase in CO_2 adsorption. However, an increase in cobalt concentration, caused the CO_2 adsorption to be enhanced sharply. Thus, it is seen that doping causes a significant effect on nucleation and hence formation of mesopores and channels thereof, increasing the surface area, which plays a greater role in the adsorption efficiency than that proffered by the functional alkalinity obtained from higher PEI functionalization.

3. Discussion

Higher content of PEI in a mesoporous RF resin structure, leads to more rapid carbonization of the polymer network resulting in a sharp and rapid weight loss. Additionally, PEI is thought to attract moisture and further speed up breakdown of benzoxazine connectors with increasing temperature. This trend is reflected in the TGA results. Samples containing Cobalt as the doing center have more thermal stability compared to those containing Nickel. Nickel is known to exhibit greater bonding to PEI nitrogen atoms entailing

the coordination of a donor heteroatom with an electro-deficient metal center. The lone pair of electrons on nitrogen atoms in the PEI structure form a donor complex with Nickel, causing an ensuing catalytic effect. Thus, the thermal degradation of the Nickel doped MRFs is more rapid compared to Cobalt nucleated MRFs [39,40].

Co has a more pronounced effect in increasing surface area than Ni. This is seen clearly in the polymer made with 1.96% PEI and shown in Figure 2d. While both Cobalt and Nickel have six coordination sites each, Nickel is known to have a higher affinity for amino coordination, as seen in polyhistidine tag chromatography [40]. The weaker affinity of Cobalt has been seen in protein chromatography. It results in Co being less deleterious on the structure of the protein by way of lower bonding affinity. A similar process is thought to occur in the polymers made in this work. Here, morphological nucleation works alongside and parallel to the cross-linking process in the polymeric structure. We can visualize the lone pair of electrons on the PEI amine nitrogen coordinate with the Ni vacant orbitals. This coordination complex based anchoring results in a nucleation process which competes with the rate of crosslinking. Thus, a higher affinity with Ni may cause a more pronounced disruptive effect on structure formation and porosity.

A milder coordination between PEI amine lone electron pairs and the Cobalt centers causes a more even balance between crosslinking and nucleation leading to a better development of surface area and uniform porosity [41,42]. The isotherm was found to match to Type IV adsorption curves, indicating the presence of multilayers. However, in the case of RF, the obtained isotherm showed Type IV and V.

4. Materials and Methods

4.1. Materials

Resorcinol (99%), Formaldehyde solution (37% in water), and branched polyethylenimine (MW = 10000) were purchased from Alfa Aesar (Haverhill, MA, USA) and used without any further processing. Cobalt acetylacetonate and nickel acetylacetonate (95%) were obtained from Bean Town Chemicals (Hudson, NH, USA) and used as received. Ethanol proof 200 (VWR) and sodium hydrogen sulfate were purchased from Sigma-Aldrich (St. Louis, MO, USA).

4.2. Synthesis of My-x-RFs

My-x-RFs were synthesized by a one-pot solvothermal method. 1.5 g resorcinol was dissolved in 4.4 mL of deionized water (DI). Then 5.6 mL of PEI (1.96% or 3.98%) *w/v* in ethanol was added, and the mixture was kept stirring at 40 °C for 20 min. Then the metal salt was added and stirred for an additional 20 min at 40 °C. Then 2.1 mL of formaldehyde solution 37% was injected by syringe quickly and the milky solution stirred at high speed for 20 min at 40 °C. Finally, this emulsion was transferred to a Teflon autoclave chamber and kept under static condition at 120 °C for 12 h. After cooling to room temperature, the polymer was smashed and washed three times with water and then three times by ethanol. M-RFs were dried at room temperature overnight. The obtained mesoporous catalyst was named as My-x-RFs, where M is metal type, y is metal concentration in the reaction mixture, and x is the PEI concentration denoted as N (0% PEI), M (1.96% PEI) and H (3.98% PEI). RF is denoted for mesoporous resorcinol formaldehyde polymer without metal salt and PEI.

4.3. Characterization

Scanning electron microscope (SEM) was used to look at the morphology and pore structure of the samples. Thermo Scientific™ FEI Quanta™ line 650 SEM (Waltham, MA, USA) with a low vacuum detector under 10 kV took images. Then energy-Dispersive Spectroscopy (EDS) was used for elemental mapping analysis by FEI Quanta FEG 250 detector. Aztec software (Oxford Instruments, Abingdon, UK) was applied to the analysis of EDS data. Thermogravimetric analyzer (TG) was performed on TA Instruments Q500 with 10 °C·min^{−1} to 750 °C under N₂ with 100 m²/hr. To remove moisture from the

samples, temperature was increased to 100 °C, and data acquisition was started after cooling down to 50 °C. The N₂ Adsorption was measured by Quantachrome NOVA Tech LX4. Prior the measurement, the sample was degassed at 120 °C for 24 h under vacuum to remove the adsorbed species on the surface of sample and finally cooled to room temperature. The Brunauer-Emmett-Teller (BET) method was utilized to calculate the specific mesoporous surface area of the samples by using the adsorption branch acquired at a relative pressure (P/P_0) range of 0.05–0.30 (Equation (1)). Barrett, Joyner, and Halenda (BJH) model was applied to estimate pore size volume from the quantity of N₂ adsorbed at relative pressure (P/P_0) of 0.99. Touch WinTM software was used for all calculation which was reported in Table 1.

$$\frac{1}{W\left(\left(\frac{P_0}{P}\right) - 1\right)} = \left(\frac{1}{W_m C}\right) + \frac{C - 1}{(W_m C)} \left(\frac{P}{P_0}\right) \quad (1)$$

where W is the weight of gas adsorbed at a relative pressure, P/P_0 , and W_m is the weight of adsorbate constituting a monolayer of surface coverage, and C “Constant”, is related to the energy of adsorption in the first adsorbed layer and consequently its value is an indication of the magnitude or strength of the adsorbent/adsorbate interactions.

Molecular structure of the samples was explored by Fourier transform infrared spectroscopy (FT-IR). IR spectra were recorded on a PerkinElmer Spectrum 100 FT-IR spectrometer.

4.4. Carbon Dioxide Adsorption

CO₂ adsorption was measured by the same system (Quantachrome NOVA Tech LX4) up to 1 bar, but ice bath was used for 0 °C and water bath for room temperature experiments. The samples were degassed as mentioned above. The isosteric heat of adsorption (Q_{st}) was calculated based on the Clausius-Clapeyron equation [43] for which the CO₂ adsorption was conducted at two different temperatures of 273 and 298 K by Equation (2).

$$Q_{st} = RT^2 \left(\frac{\partial \ln p}{\partial \ln T} \right) \quad (2)$$

where R is universal gas constant; T_2 and T_1 are two different temperatures based on Kelvin; P_2 and P_1 are the partial pressure at the same amount of adsorbed CO₂ for T_2 and T_1 .

5. Conclusions

In summary, this paper presented a novel, template-free and generalized method, for the fast and scalable synthesis of metal centered mesoporous polymer for CO₂ capturing for its possible subsequent conversion by metal catalyzed electrochemical reduction. The presented method can strongly promote the industrial application of mesoporous polymer by overcoming a series of process and scale up limitation associated with the traditional template-based self-assembly route. Owing to an abundant nitrogen content, high alkaline functionality, and predominantly mesoporous nature, the synthesized MRFs demonstrated excellent capacity for CO₂ adsorption. Based on these results, it can be concluded that a combination of metal functionality and mesoporosity is very important for CO₂ adsorption and catalytic conversion of CO₂. Thus, this work provides an initial novel insight for the designing porous materials with high performance for the selective capture and conversion of CO₂ from flue gas. The FTIR results, SEM, and elemental analysis validated the incorporation of different kinds and contents of nitrogen species into the framework synthesized MRFs. The nitrogen adsorption isotherms and SEM images revealed that the synthesized MRFs have large surface areas and abundant meso–macropores. The CO₂ and N₂ adsorption experiments demonstrated that the synthesized MRFs have high capacity for CO₂ at a relatively low pressure of 0.15 bar (0.64–1.47 mmol·g^{−1} at 0 °C and 0.49–0.87 mmol·g^{−1} at 25 °C). This work provides a facile approach to the targeted synthesis of nitrogen functionalized MRFs with potential applications in the capture and electrochemical conversion of CO₂.

Supplementary Materials: The following are available online, Figure S1: EDS elemental analysis of various samples: (a) RF (b) M-RF (c) H-RF, Figure S2: EDS elemental analysis of various samples: (d) Co1-M-RF (e) Co3-M-RF (f) Co5-M-RF (g) Ni3-M-RF.

Author Contributions: Conceptualization, M.N., I.N.; Methodology, M.N., I.N.; Formal Analysis, M.N., I.N.; Investigation, M.N., I.N.; Resources, I.N.; Data Curation, M.N., I.N.; Writing—original draft preparation, M.N., I.N.; Writing—review and editing, M.N., I.N., B.K., A.M., N.F.; Visualization, M.N.; Supervision, I.N.; Project Administration, I.N.; Funding Acquisition, I.N. All authors have read and agreed to the published version of the manuscript.

Funding: This research was funded by Rowan University Startup Fund (Fund No. 11010).

Data Availability Statement: Data is contained within the article or supplementary material.

Acknowledgments: The authors also appreciate Jeffrey Hettinger for the assistance on SEM and EDAX characterization of the samples.

Conflicts of Interest: The authors declare no conflict of interest.

Sample Availability: Samples of the compounds Co1-M-RF, Co3-M-RF, Co5-M-RF, Ni3-M-RF are available from the authors.

References

- Oh, T.H. Carbon capture and storage potential in coal-fired plant in Malaysia—A review. *Renew. Sustain. Energy Rev.* **2010**, *14*, 2697–2709. [\[CrossRef\]](#)
- Liu, X.; Zhu, L.; Wang, H.; He, G.; Bian, Z. Catalysis performance comparison for electrochemical reduction of CO₂ on Pd–Cu/graphene catalyst. *RSC Adv.* **2016**, *6*, 38380–38387. [\[CrossRef\]](#)
- Maina, J.W.; Pozo-Gonzalo, C.; Kong, L.; Schütz, J.; Hill, M.; Dumée, L.F. Metal organic framework based catalysts for CO₂ conversion. *Mater. Horiz.* **2017**, *4*, 345–361. [\[CrossRef\]](#)
- Yaashikaa, P.; Kumar, P.S.; Varjani, S.J.; Saravanan, A. A review on photochemical, biochemical and electrochemical transformation of CO₂ into value-added products. *J. CO₂ Util.* **2019**, *33*, 131–147. [\[CrossRef\]](#)
- Chen, C.S.; Handoko, A.D.; Wan, J.H.; Ma, L.; Ren, D.; Yeo, S. Stable and Selective Electrochemical Reduction of Carbon Dioxide to Ethylene on Copper Mesocrystals Article Type Stable and Selective Electrochemical Reduction of Carbon Dioxide to Ethylene on Copper Mesocrystals. *Catal. Sci. Technol.* **2015**, *5*, 161–168. [\[CrossRef\]](#)
- Zhao, C.; Wang, J. Electrochemical reduction of CO₂ to formate in aqueous solution using electro-deposited Sn catalysts. *Chem. Eng. J.* **2016**, *293*, 161–170. [\[CrossRef\]](#)
- Zhang, T.; Li, X.; Qiu, Y.; Su, P.; Xu, W.; Zhong, H.; Zhang, H. Multilayered Zn nanosheets as an electrocatalyst for efficient electrochemical reduction of CO₂. *J. Catal.* **2018**, *357*, 154–162. [\[CrossRef\]](#)
- Han, N.; Wang, Y.; Ma, L.; Wen, J.; Li, J.; Zheng, H.; Nie, K.; Wang, X.; Zhao, F.; Li, Y.; et al. Supported Cobalt Polyphthalocyanine for High-Performance Electrocatalytic CO₂ Reduction. *Chem* **2017**, *3*, 652–664. [\[CrossRef\]](#)
- Castro-Osma, J.A.; North, M.; Wu, X. Synthesis of Cyclic Carbonates Catalysed by Chromium and Aluminium Salphen Complexes. *Chem. Eur. J.* **2016**, *22*, 2100–2107. [\[CrossRef\]](#)
- Buttner, H.; Longwitz, L.; Steinbauer, J.; Wulf, C.; Werner, T. Recent Developments in the Synthesis of Cyclic Carbonates from Epoxides and CO₂ Top. *Curr. Chem.* **2017**, *375*, 50.
- Janeta, M.; Lis, T.; Szafert, S. Zinc Imine Polyhedral Oligomeric Silsesquioxane as a Quattro-Site Catalyst for the Synthesis of Cyclic Carbonates from Epoxides and Low-Pressure CO₂. *Chem. Eur. J.* **2020**, *26*, 13686–13697. [\[CrossRef\]](#) [\[PubMed\]](#)
- Tang, Q.; Wang, Y.; Zhang, J.; Qiao, R.; Xie, X.; Wang, Y.; Yang, Y. Cobalt(II) acetylacetonate complex immobilized on aminosilane-modified SBA-15 as an efficient catalyst for epoxidation of trans-stilbene with molecular oxygen. *Appl. Organomet. Chem.* **2016**, *30*, 435–440. [\[CrossRef\]](#)
- Hu, X.-M.; Hval, H.H.; Bjerglund, E.T.; Dalgaard, K.J.; Madsen, M.R.; Pohl, M.-M.; Welter, E.; Lamagni, P.; Buhl, K.B.; Bremholm, M.; et al. Selective CO₂ Reduction to CO in Water using Earth-Abundant Metal and Nitrogen-Doped Carbon Electrocatalysts. *ACS Catal.* **2018**, *8*, 6255–6264. [\[CrossRef\]](#)
- Yu, J.; Guo, M.; Muhammad, F.; Wang, A.; Zhang, F.; Li, Q.; Zhu, G. One-pot synthesis of highly ordered nitrogen-containing mesoporous carbon with resorcinol–urea–formaldehyde resin for CO₂ capture. *Carbon* **2014**, *69*, 502–514. [\[CrossRef\]](#)
- Chen, Z.; Deng, S.; Wei, H.; Wang, B.; Huang, J.; Yu, G. Polyethylenimine-Impregnated Resin for High CO₂ Adsorption: An Efficient Adsorbent for CO₂ Capture from Simulated Flue Gas and Ambient Air. *ACS Appl. Mater. Interfaces* **2013**, *5*, 6937–6945. [\[CrossRef\]](#)
- Adelodun, A.A.; Kim, K.-H.; Ngila, J.C.; Szulejko, J. A review on the effect of amination pretreatment for the selective separation of CO₂. *Appl. Energy* **2015**, *158*, 631–642. [\[CrossRef\]](#)
- Ma, T.; Fan, Q.; Li, X.; Qiu, J.; Wu, T.; Sun, Z. Graphene-based materials for electrochemical CO₂ reduction. *J. CO₂ Util.* **2019**, *30*, 168–182. [\[CrossRef\]](#)

18. Sethia, G.; Sayari, A. Comprehensive study of ultra-microporous nitrogen-doped activated carbon for CO₂ capture. *Carbon* **2015**, *93*, 68–80. [\[CrossRef\]](#)
19. Liu, Z.; Du, Z.; Song, H.; Wang, C.; Subhan, F.; Xing, W.; Yan, Z. The fabrication of porous N-doped carbon from widely available urea formaldehyde resin for carbon dioxide adsorption. *J. Colloid Interface Sci.* **2014**, *416*, 124–132. [\[CrossRef\]](#)
20. Liu, F.; Huang, K.; Wu, Q.; Dai, S. Solvent-Free Self-Assembly to the Synthesis of Nitrogen-Doped Ordered Mesoporous Polymers for Highly Selective Capture and Conversion of CO₂. *Adv. Mater.* **2017**, *29*, 1700445. [\[CrossRef\]](#)
21. Thostenson, E.T.; Li, W.Z.; Wang, D.Z.; Ren, Z.F.; Chou, T.W. Carbon nanotube/carbon fiber hybrid multiscale composites. *J. Appl. Phys.* **2002**, *91*, 6034–6037. [\[CrossRef\]](#)
22. Chiang, Y.-C.; Hsu, W.-L.; Lin, S.-Y.; Juang, R.-S. Enhanced CO₂ Adsorption on Activated Carbon Fibers Grafted with Nitrogen-Doped Carbon Nanotubes. *Materials* **2017**, *10*, 511. [\[CrossRef\]](#) [\[PubMed\]](#)
23. Razmkhah, M.; Mosavian, M.T.H.; Moosavi, F.; Ahmadpour, A. CO₂ gas adsorption into graphene oxide framework: Effect of electric and magnetic field. *Appl. Surf. Sci.* **2018**, *456*, 318–327. [\[CrossRef\]](#)
24. Zhang, Y.; Chi, Y.; Zhao, C.; Liu, Y.; Zhao, Y.; Jiang, L.; Song, Y. CO₂ Adsorption Behavior of Graphite Oxide Modified with Tetraethylenepentamine. *J. Chem. Eng. Data* **2017**, *63*, 202–207. [\[CrossRef\]](#)
25. Kemp, K.C.; Chandra, V.; Saleh, M.; Kim, K.S. Reversible CO₂ adsorption by an activated nitrogen doped graphene/polyaniline material. *Nanotechnology* **2013**, *24*, 235703. [\[CrossRef\]](#)
26. Ju, H.; Kaur, G.; Kulkarni, A.P.; Giddey, S. Challenges and trends in developing technology for electrochemically reducing CO₂ in solid polymer electrolyte membrane reactors. *J. CO₂ Util.* **2019**, *32*, 178–186. [\[CrossRef\]](#)
27. Olajire, A.A. Recent progress on the nanoparticles-assisted greenhouse carbon dioxide conversion processes. *J. CO₂ Util.* **2018**, *24*, 522–547. [\[CrossRef\]](#)
28. Sun, Y.; Li, K.; Zhao, J.; Wang, J.; Tang, N.; Zhang, D.; Guan, T.; Jin, Z. Nitrogen and sulfur Co-doped microporous activated carbon macro-spheres for CO₂ capture. *J. Colloid Interface Sci.* **2018**, *526*, 174–183. [\[CrossRef\]](#) [\[PubMed\]](#)
29. Jin, Z.-E.; Wang, J.-L.; Zhao, R.-J.; Guan, T.-T.; Zhang, D.-D.; Li, K.-X. Synthesis of S, N co-doped porous carbons from polybenzoxazine for CO₂ capture. *New Carbon Mater.* **2018**, *33*, 392–401. [\[CrossRef\]](#)
30. Liu, F.; Huang, K.; Yoo, C.-J.; Okonkwo, C.; Tao, D.-J.; Jones, C.W.; Dai, S. Facilely synthesized meso-macroporous polymer as support of poly(ethyleneimine) for highly efficient and selective capture of CO₂. *Chem. Eng. J.* **2017**, *314*, 466–476. [\[CrossRef\]](#)
31. Niu, M.; Yang, H.; Zhang, X.; Wang, Y.; Tang, A. Amine-Impregnated Mesoporous Silica Nanotube as an Emerging Nanocomposite for CO₂ Capture. *ACS Appl. Mater. Interfaces* **2016**, *8*, 17312–17320. [\[CrossRef\]](#)
32. Li, P.; Ge, B.; Zhang, S.; Chen, S.; Zhang, Q.; Zhao, Y. CO₂ Capture by Polyethylenimine-Modified Fibrous Adsorbent. *Langmuir* **2008**, *24*, 6567–6574. [\[CrossRef\]](#)
33. Yan, X.; Zhang, L.; Zhang, Y.; Qiao, K.; Yan, Z.; Komarneni, S. Amine-modified mesocellular silica foams for CO₂ capture. *Chem. Eng. J.* **2011**, *168*, 918–924. [\[CrossRef\]](#)
34. Subagyo, D.J.; Marshall, M.; Knowles, G.P.; Chaffee, A.L. CO₂ adsorption by amine modified siliceous mesostructured cellular foam (MCF) in humidified gas. *Micropor. Mesopor. Mater.* **2014**, *186*, 84–93. [\[CrossRef\]](#)
35. Gray, M.L.; Hoffman, J.S.; Hreha, D.C.; Fauth, D.J.; Hedges, S.W.; Champagne, K.J.; Pennline, H.W. Parametric Study of Solid Amine Sorbents for the Capture of Carbon Dioxide. *Energy Fuels* **2009**, *23*, 4840–4844. [\[CrossRef\]](#)
36. Sakwa-Novak, M.A.; Yoo, C.-J.; Tan, S.; Rashidi, F.; Jones, C.W. Poly(ethyleneimine)-Functionalized Monolithic Alumina Honeycomb Adsorbents for CO₂ Capture from Air. *Chem. Sus. Chem.* **2016**, *9*, 1859–1868. [\[CrossRef\]](#)
37. Dindi, A.; Quang, D.V.; Nashef, E.; Abu Zahra, M.R. Effect of PEI Impregnation on the CO₂ Capture Performance of Activated Fly Ash. *Energy Procedia* **2017**, *114*, 2243–2251. [\[CrossRef\]](#)
38. Wang, J.; Yao, L.; Ma, C.; Guo, X.; Qiao, W.; Ling, L.; Long, D. Organic Amine-Mediated Synthesis of Polymer and Carbon Microspheres: Mechanism Insight and Energy-Related Applications. *ACS Appl. Mater. Interfaces* **2016**, *8*, 4851–4861. [\[CrossRef\]](#)
39. Min, K.; Choi, W.; Kim, C.; Choi, M. Oxidation-stable amine-containing adsorbents for carbon dioxide capture. *Nat. Commun.* **2018**, *9*, 1–7. [\[CrossRef\]](#)
40. Huan, L.; Shi, Y.; Chen, L.; Jin, X.; Liu, R.; Winnik, M.A.; Mitchell, D. Thermal decomposition of amide and imide derivatives of malleated polyethylene. *J. Polym. Sci. Part A Polym. Chem.* **2000**, *38*, 730–740. [\[CrossRef\]](#)
41. Krämer, U.; Cotter-Howells, J.D.; Charnock, J.M.; Baker, A.J.M.; Smith, J.A.C. Free histidine as a metal chelator in plants that accumulate nickel. *Nature* **1996**, *379*, 635–638. [\[CrossRef\]](#)
42. Wegner, S.V.; Spatz, J.P. Cobalt(III) as a Stable and Inert Mediator Ion between NTA and His6-Tagged Proteins. *Angew. Chem. Int. Ed.* **2013**, *52*, 7593–7596. [\[CrossRef\]](#)
43. Newalkar, B.L.; Choudary, N.V.; Kumar, P.; Komarneni, S.; Bhat, T.S.G. Exploring the Potential of Mesoporous Silica, SBA-15, as an Adsorbent for Light Hydrocarbon Separation. *Chem. Mater.* **2002**, *14*, 304–309. [\[CrossRef\]](#)