

Design, Synthesis, and Biological Evaluation of HDAC Degrad-ers with CRBN E3 Ligase Ligands

Yingxin Lu ^{1,†}, Danwen Sun ^{2,†}, Donghuai Xiao ¹, Yingying Shao ², Mingbo Su ², Yubo Zhou ², Jia Li ^{2,*}, Shulei Zhu ^{1,*} and Wei Lu ^{1,*}

¹ Shanghai Engineering Research Center of Molecular Therapeutics and New Drug Development, School of Chemistry and Molecular Engineering, East China Normal University, 3663 North Zhongshan Road, Shanghai 200062, China; luyingxin_roy@163.com (Y.L.); cpu_zsl@163.com (D.X.); wlu@chem.ecnu.edu.cn (W.L.); slzhu@chem.ecnu.edu.cn (S.Z.)

² National Center for Drug Screening, State Key Laboratory of Drug Research, Shanghai Institute of Materia Medica, Chinese Academy of Sciences, 189 Guo Shoujing Road, Shanghai 201203, China; dan-wensun1@163.com (D.S.); yingying_shao1226@163.com (Y.S.); mbsu@simmm.ac.cn (M.S.); ybzhou@simmm.ac.cn (Y.Z.)

* Correspondence: jli@simmm.ac.cn (J.L.); slzhu@chem.ecnu.edu.cn (S.Z.); wlu@chem.ecnu.edu.cn (W. L.);

† These authors contribute equally.

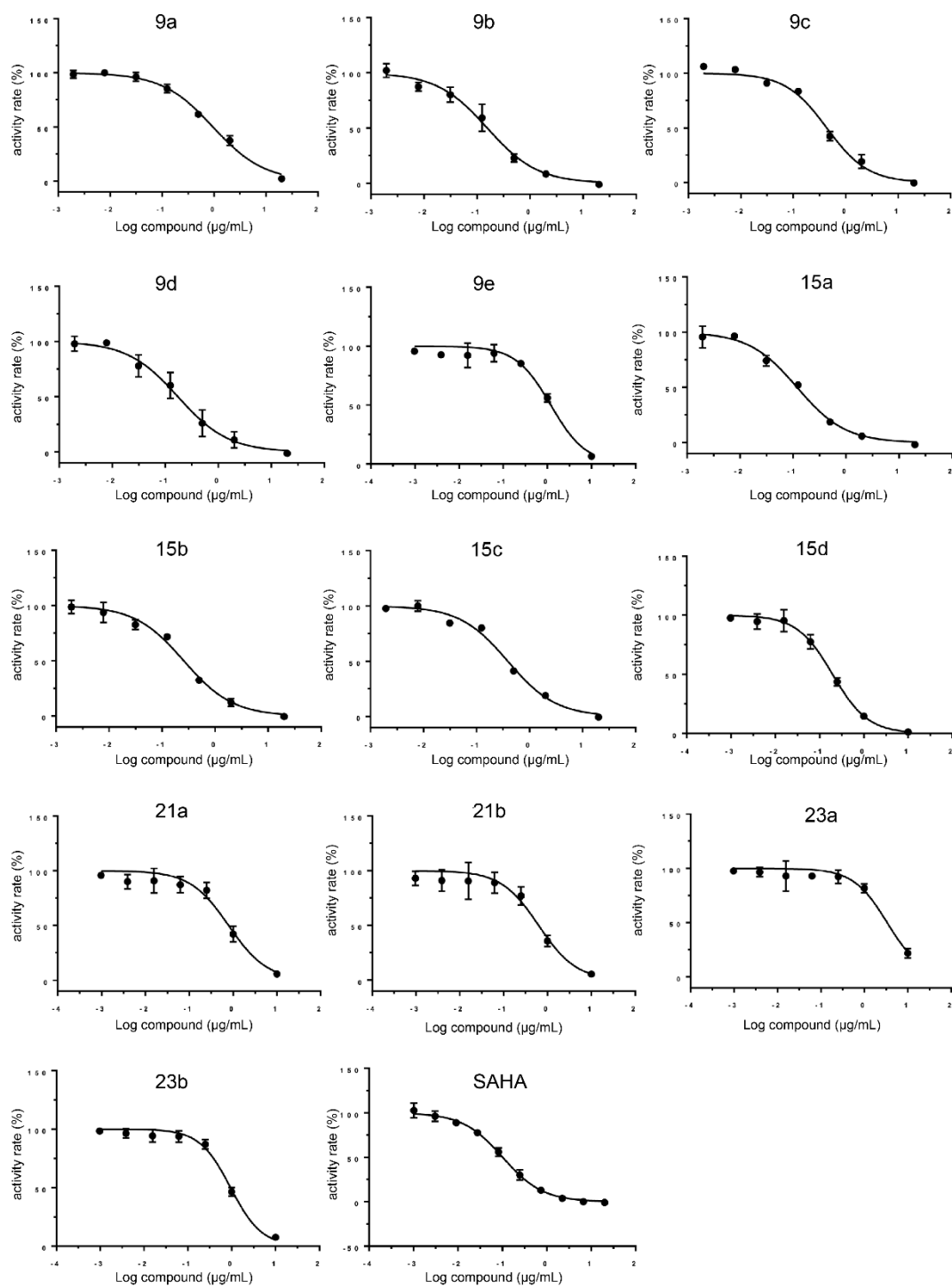


Figure S1. IC₅₀ curve of synthesized PROTACs and SAHA against HDAC1.

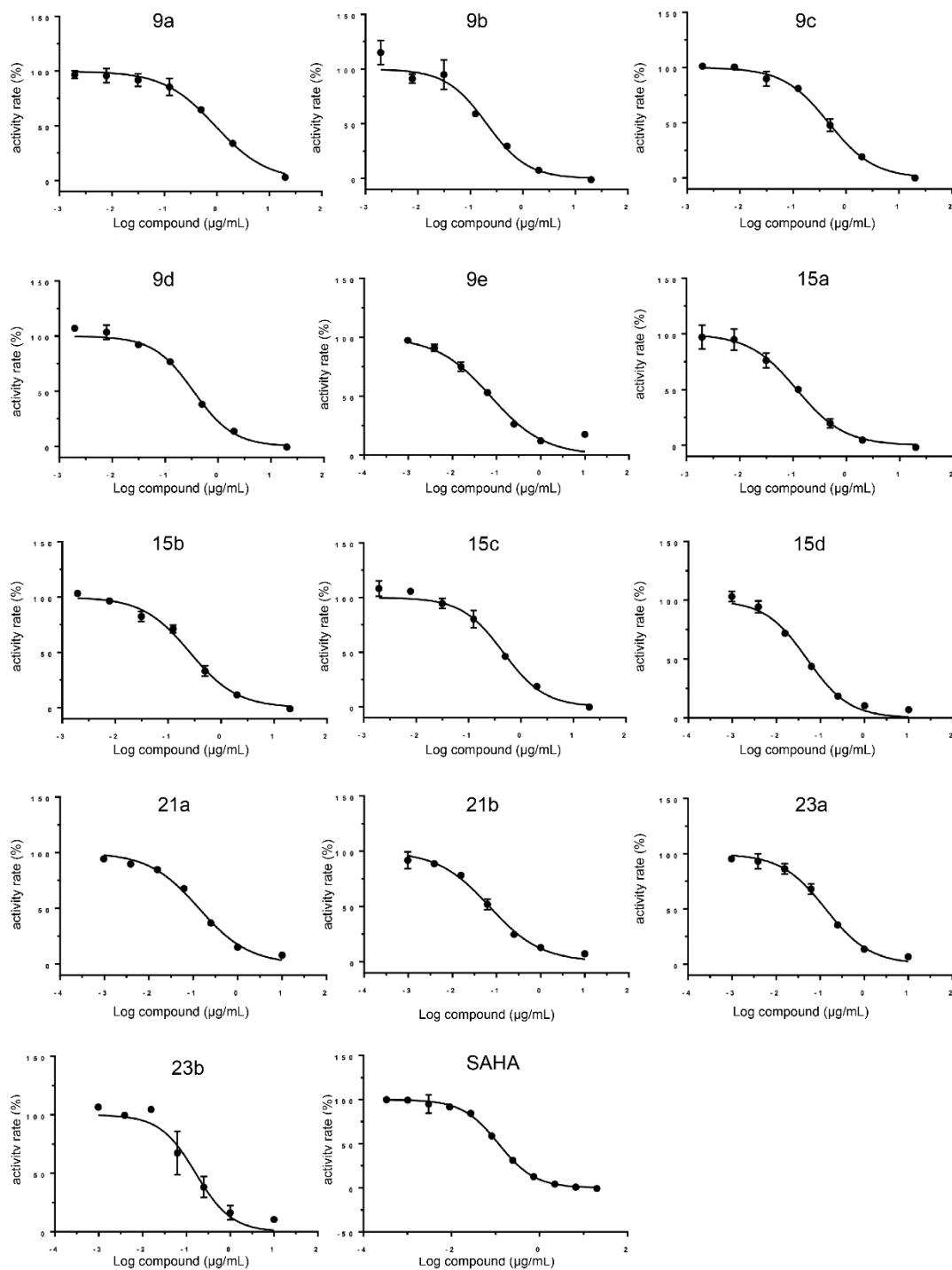


Figure S2. IC₅₀ curve of synthesized PROTACs and SAHA against HDAC3.

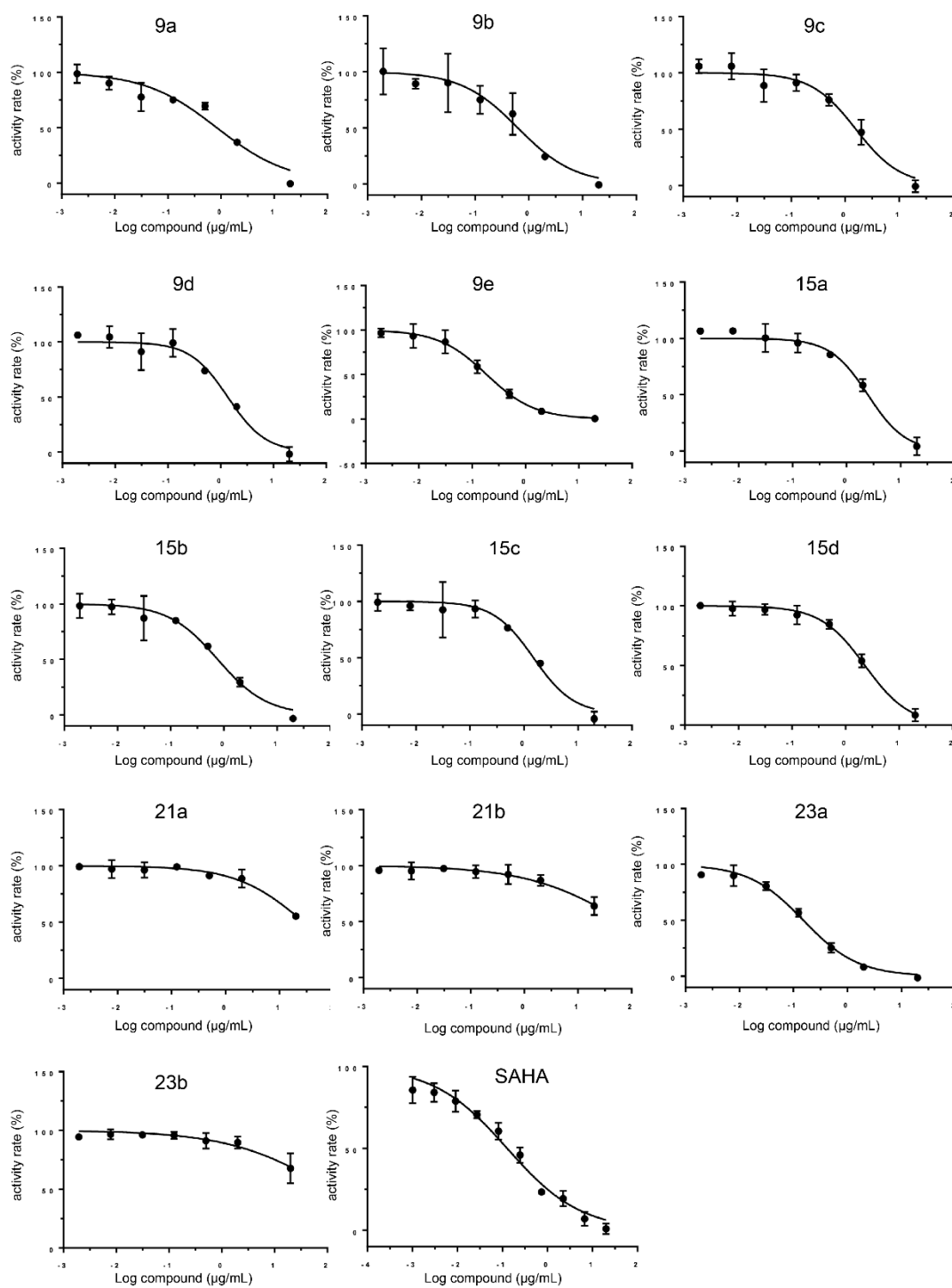


Figure S3. IC₅₀ curve of synthesized PROTACs and SAHA against HDAC6.

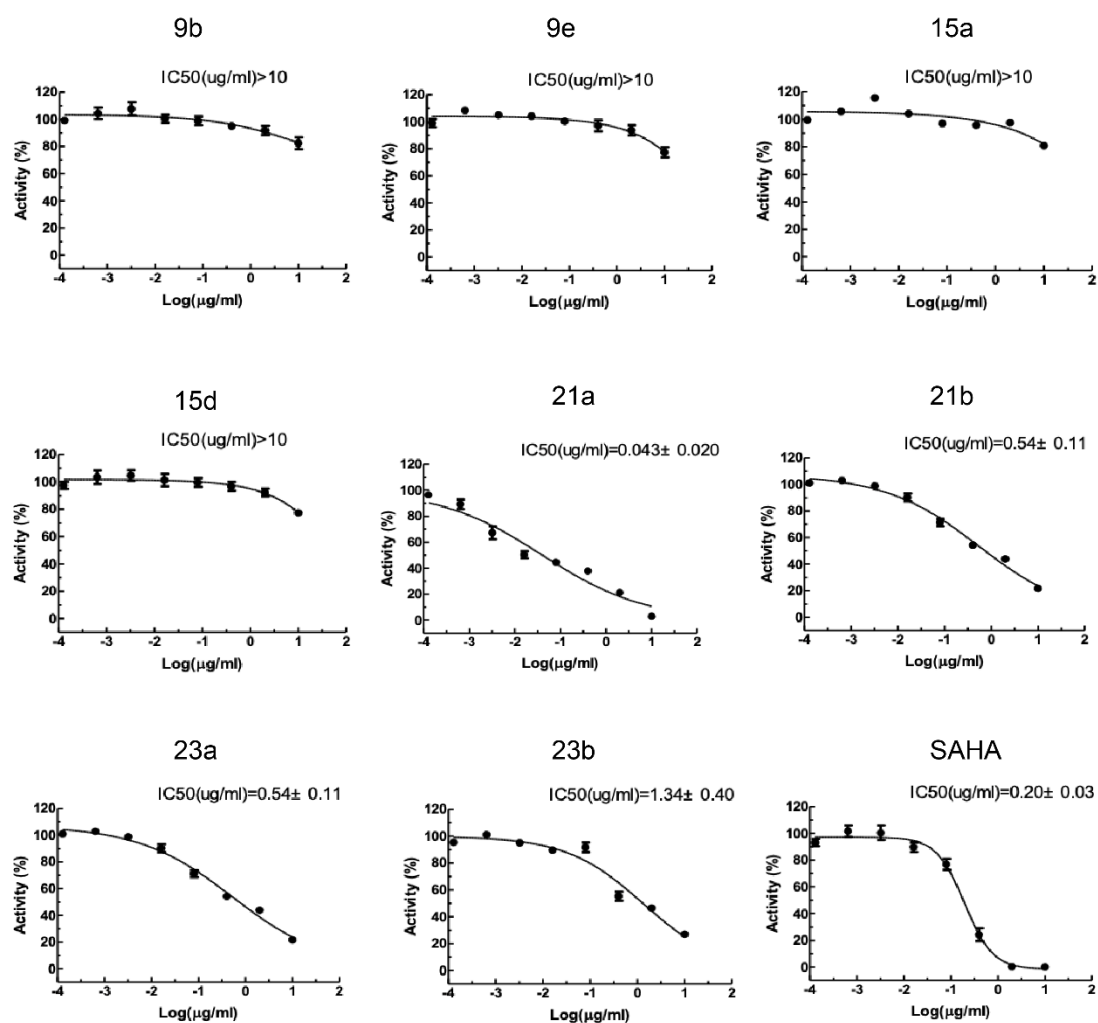
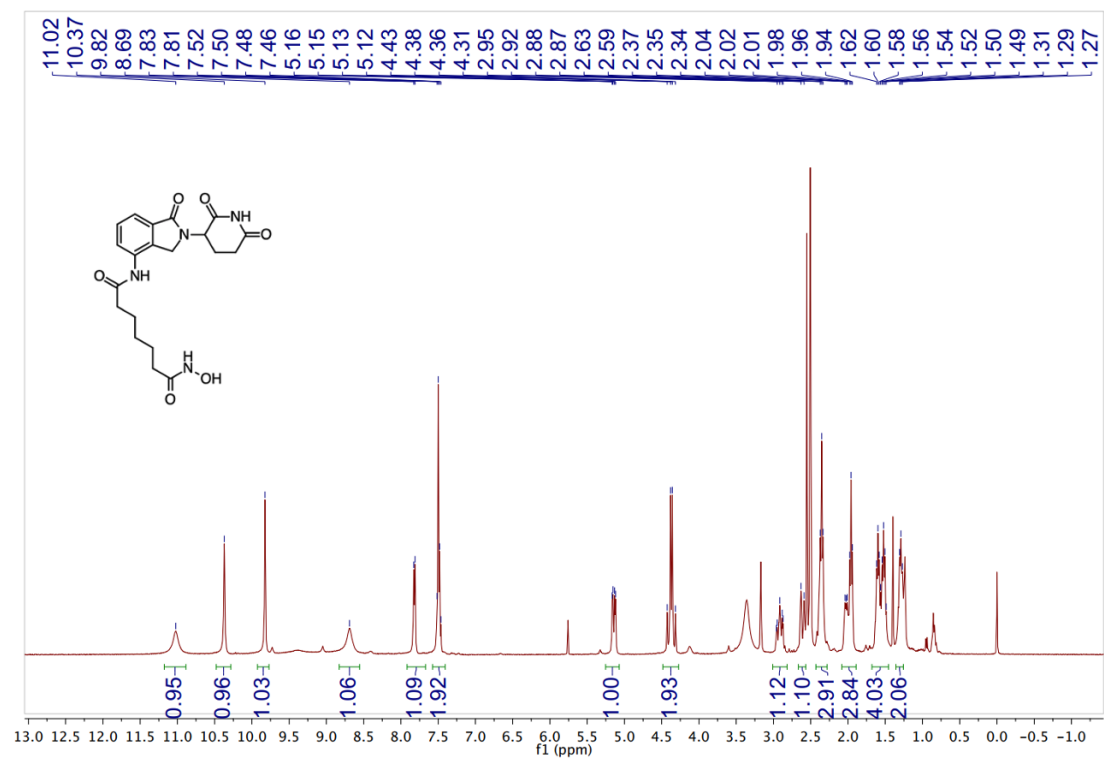
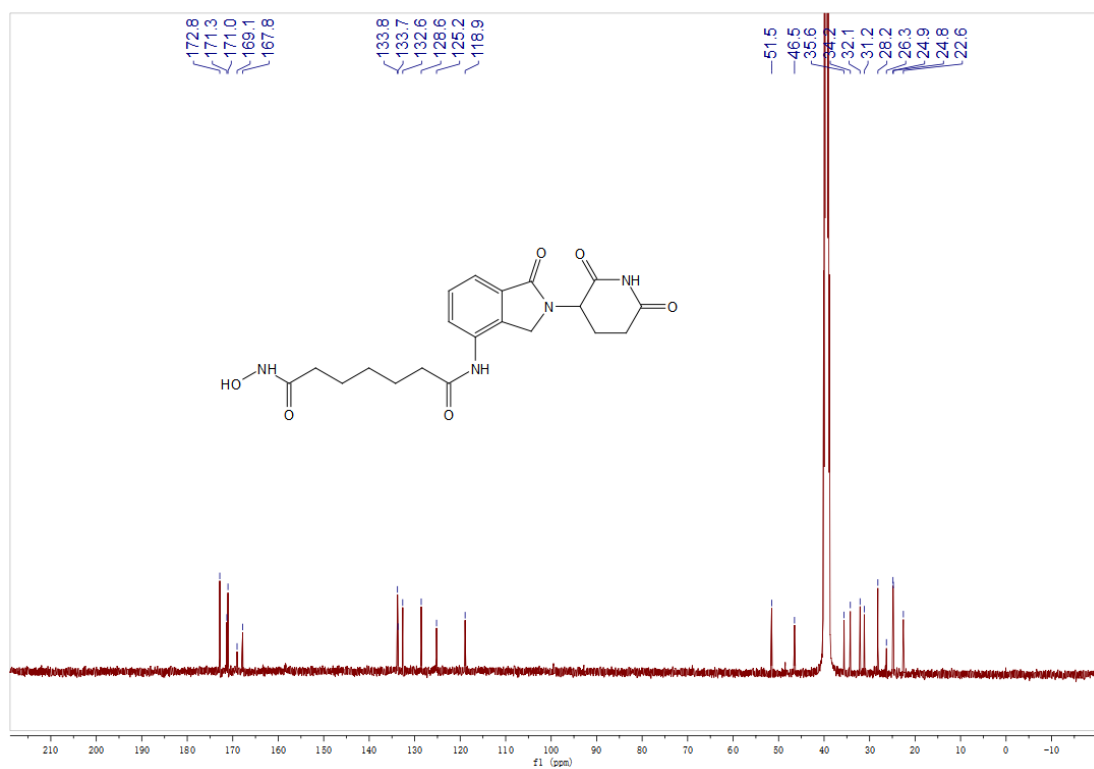


Figure S4. IC₅₀ curve of synthesized PROTACs and SAHA against MM.1S cell line.

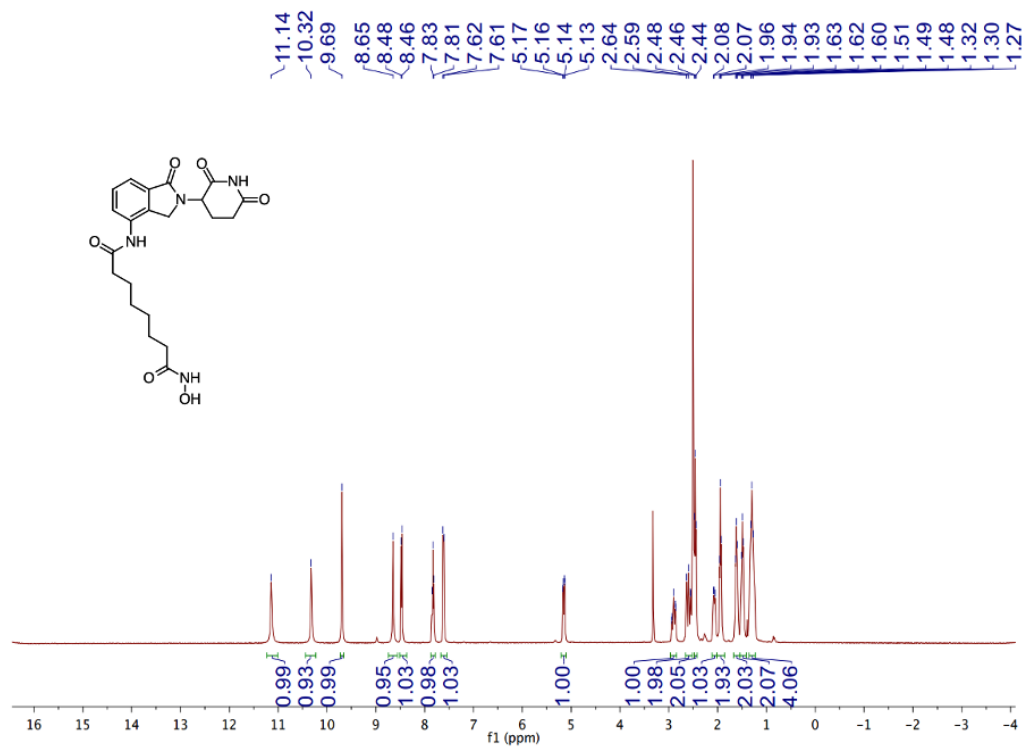
¹H-NMR for **9a**



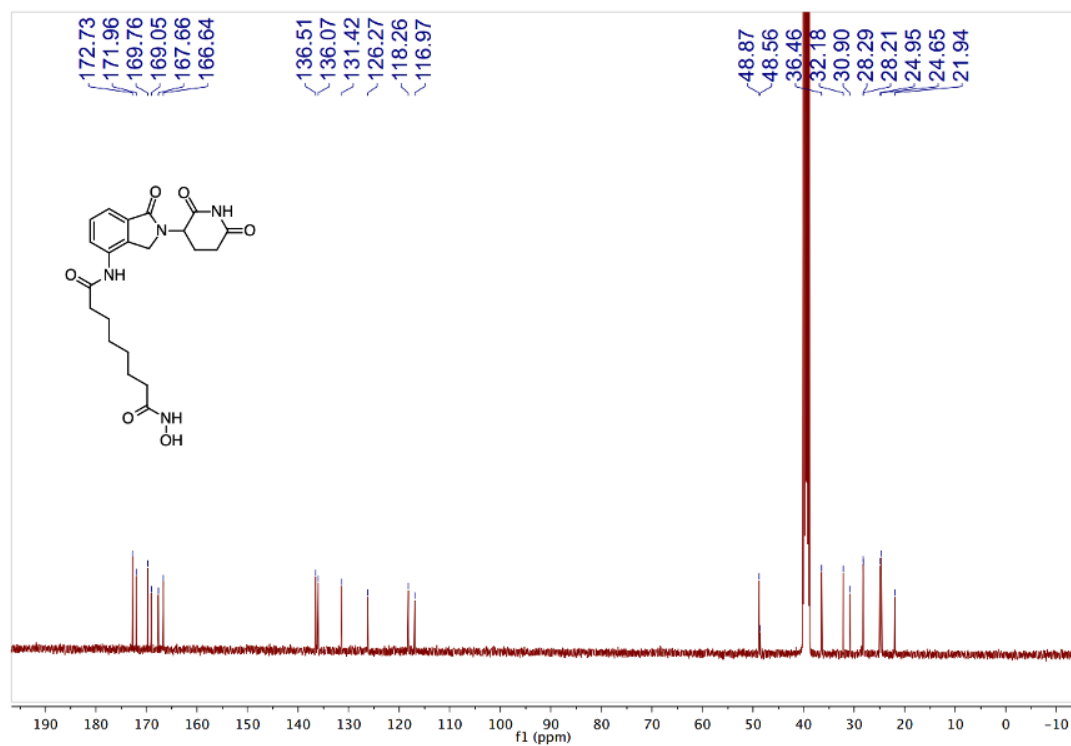
¹³C-NMR for **9a**



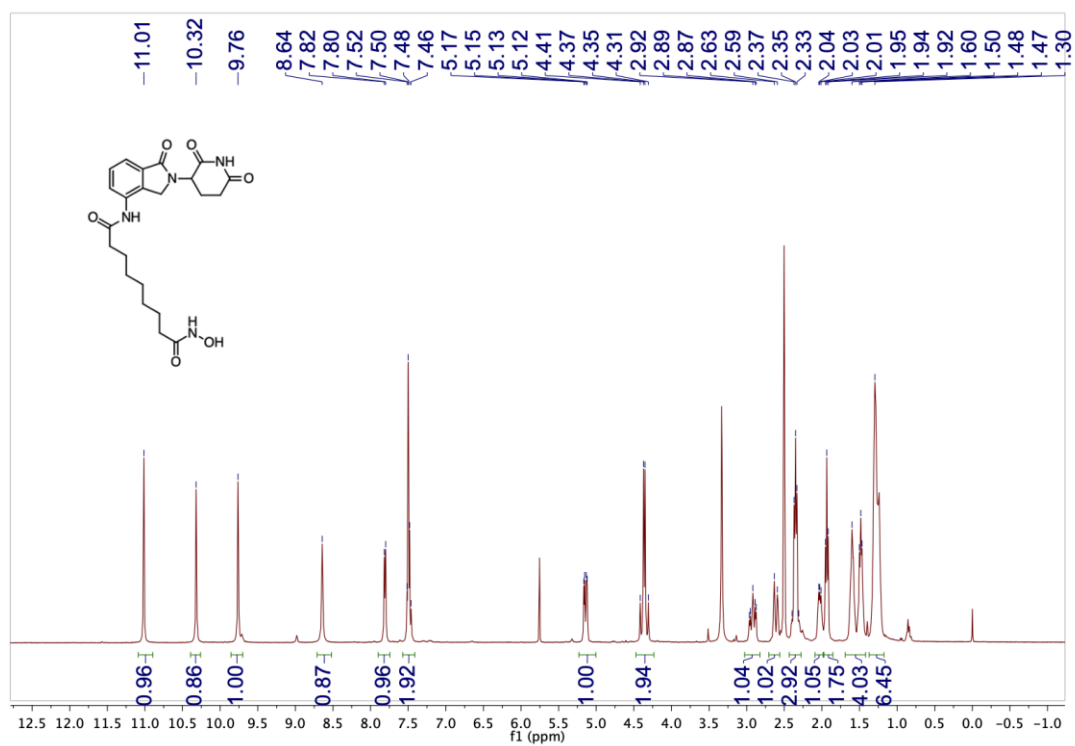
¹H-NMR for **9b**



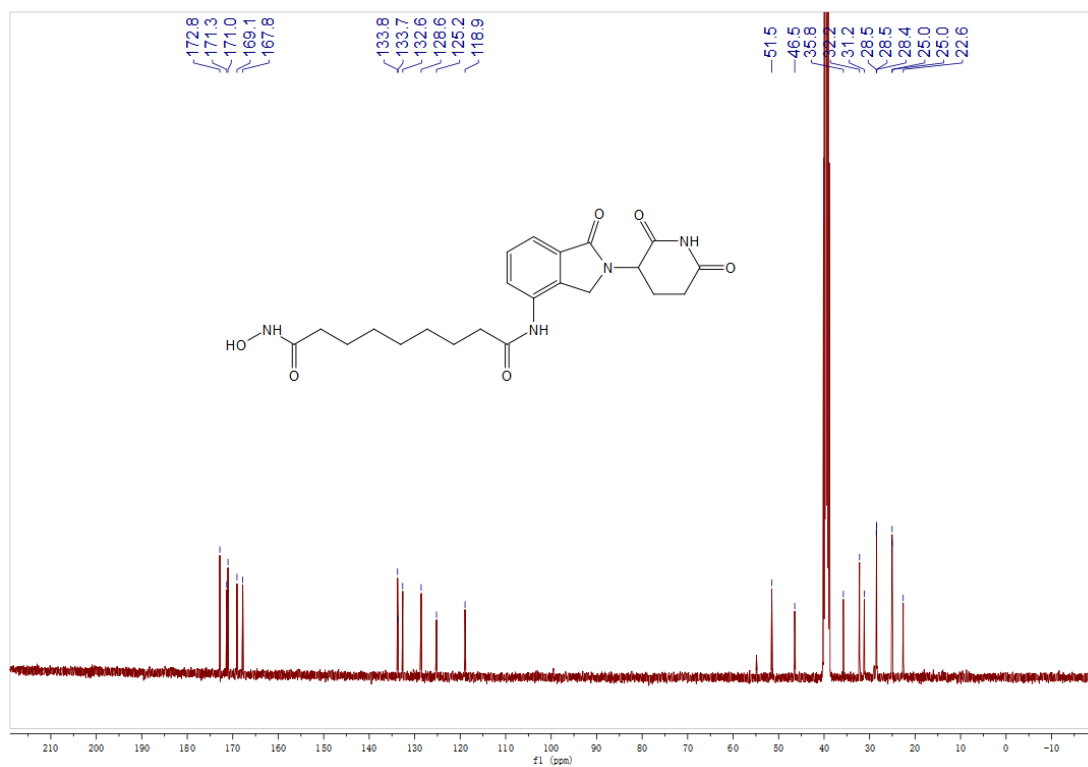
¹³C-NMR for **9b**



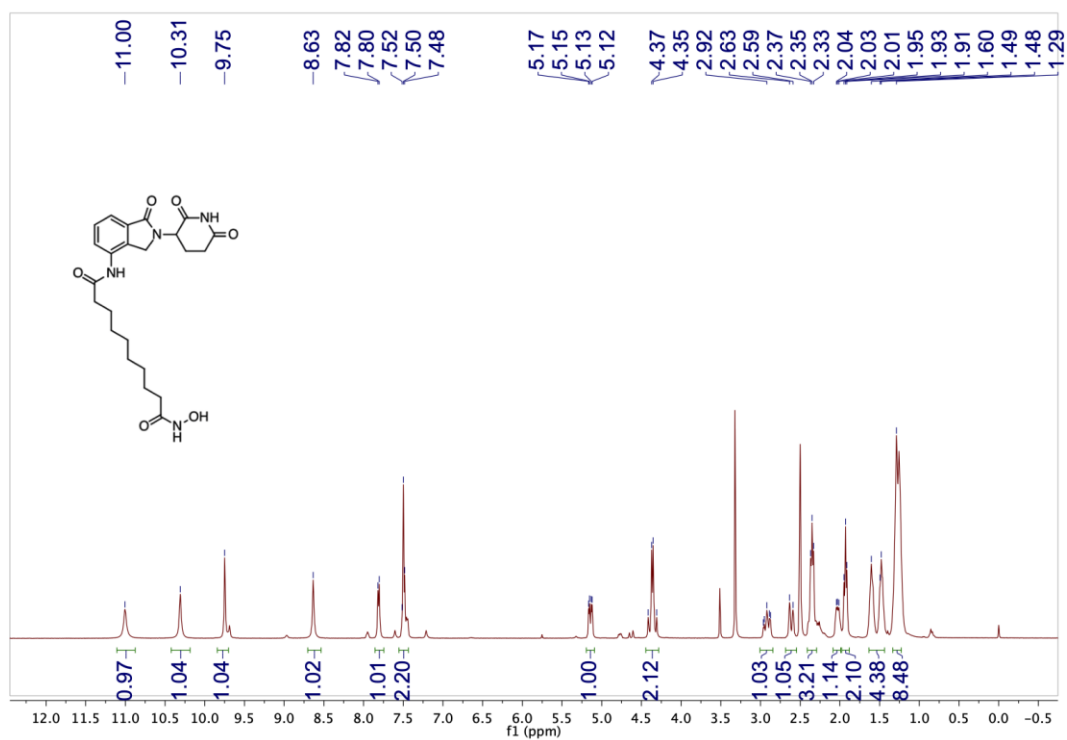
¹H-NMR for **9c**



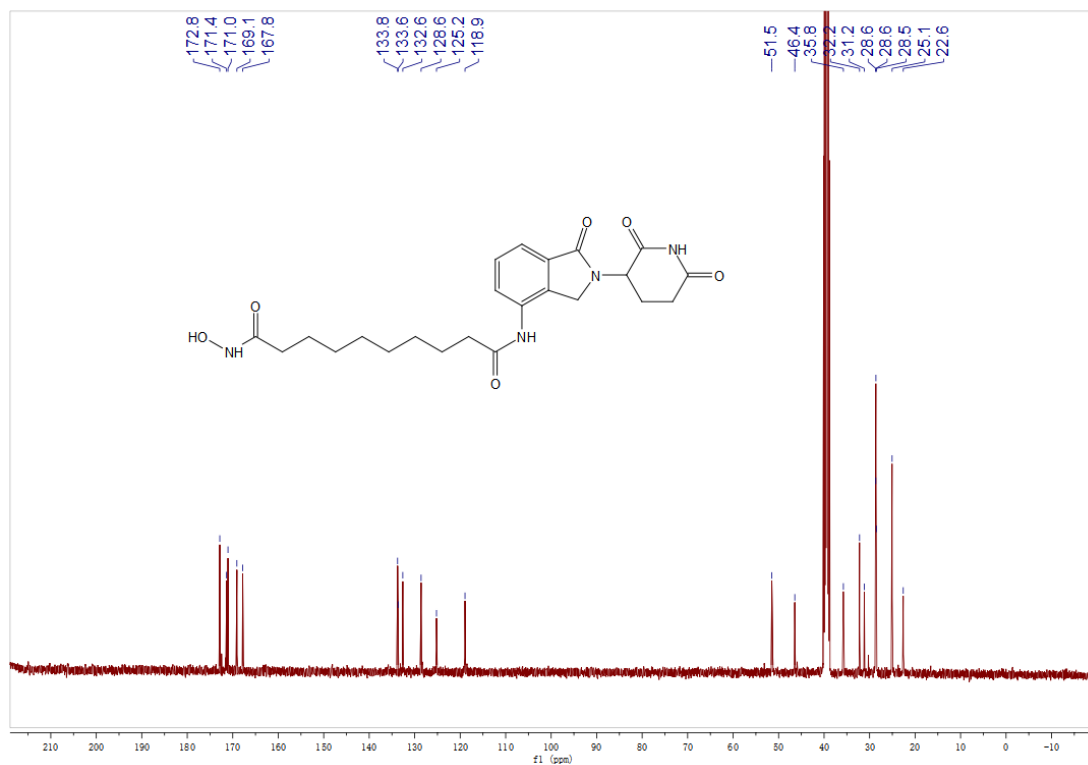
¹³C-NMR for **9c**



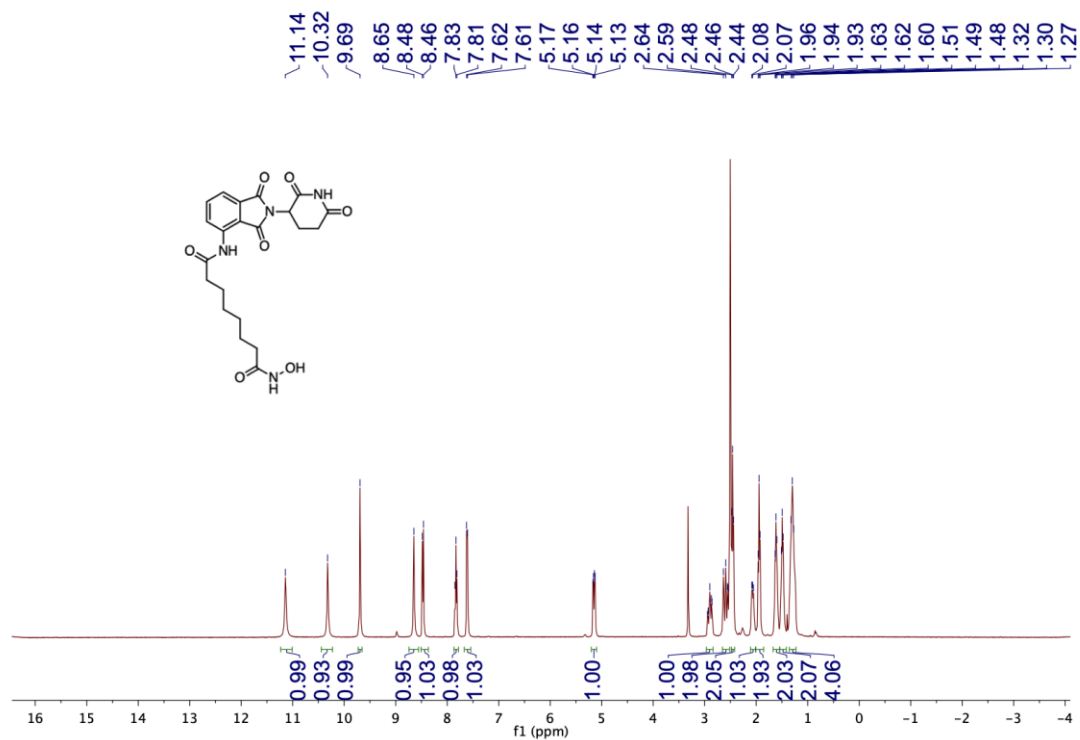
¹H-NMR for **9d**



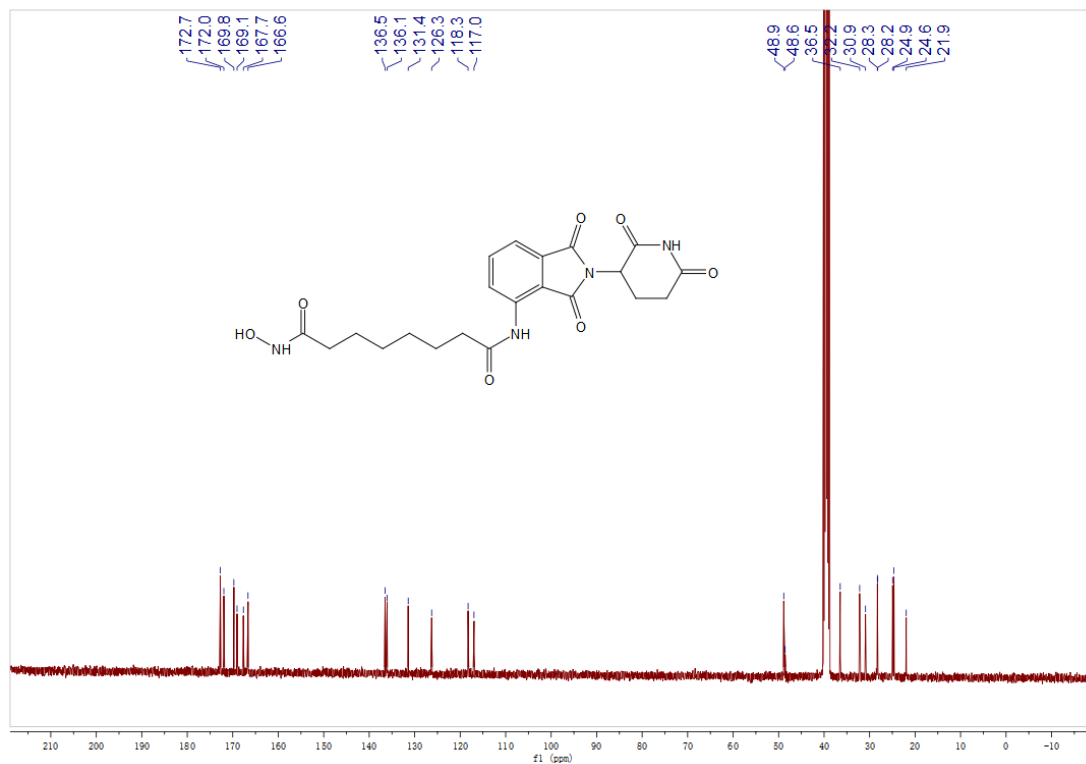
¹³C-NMR for 9d



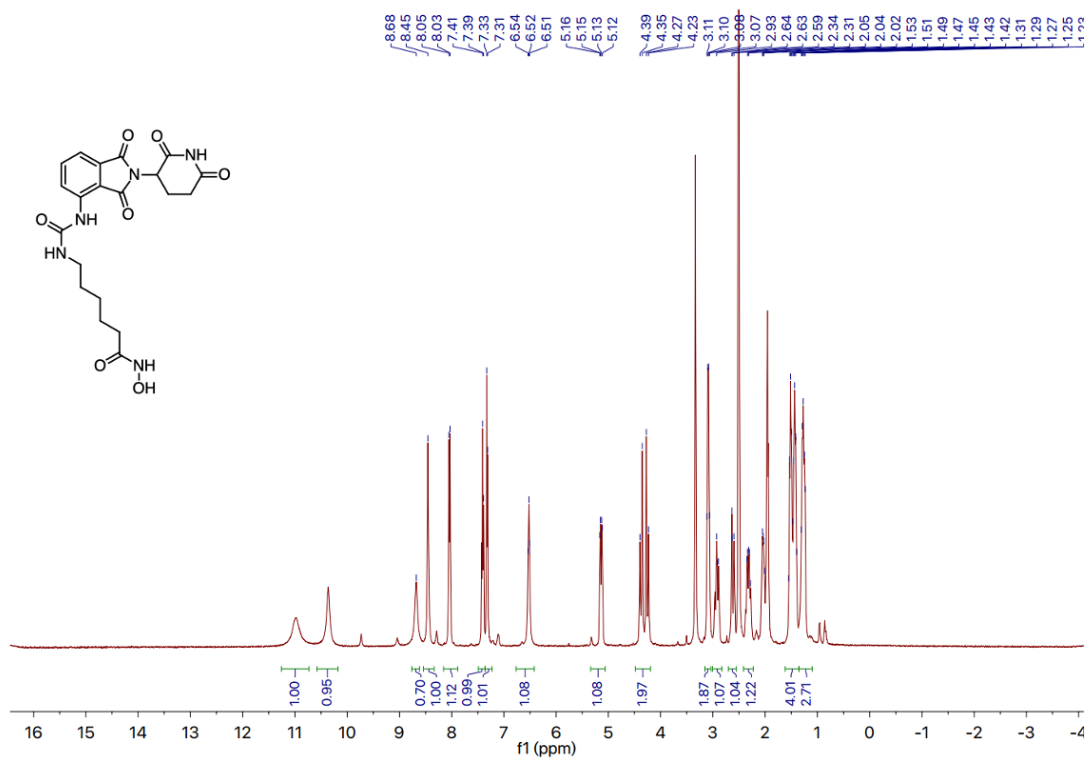
¹H-NMR for 9e



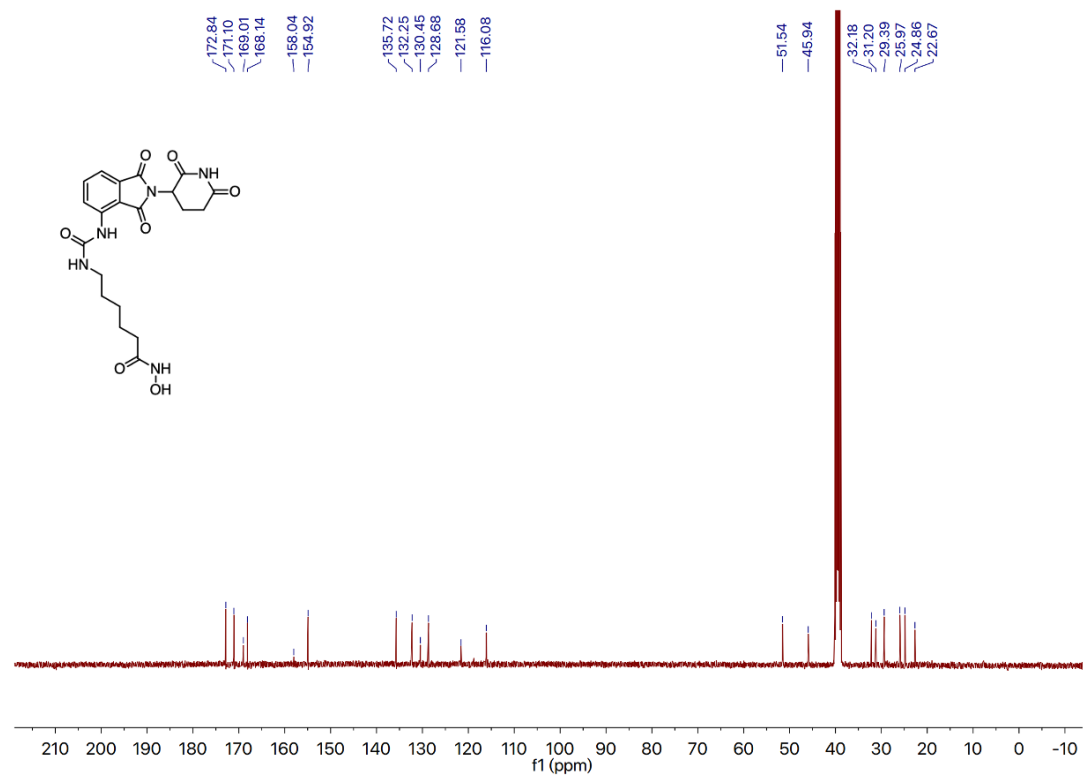
¹³C-NMR for 9e



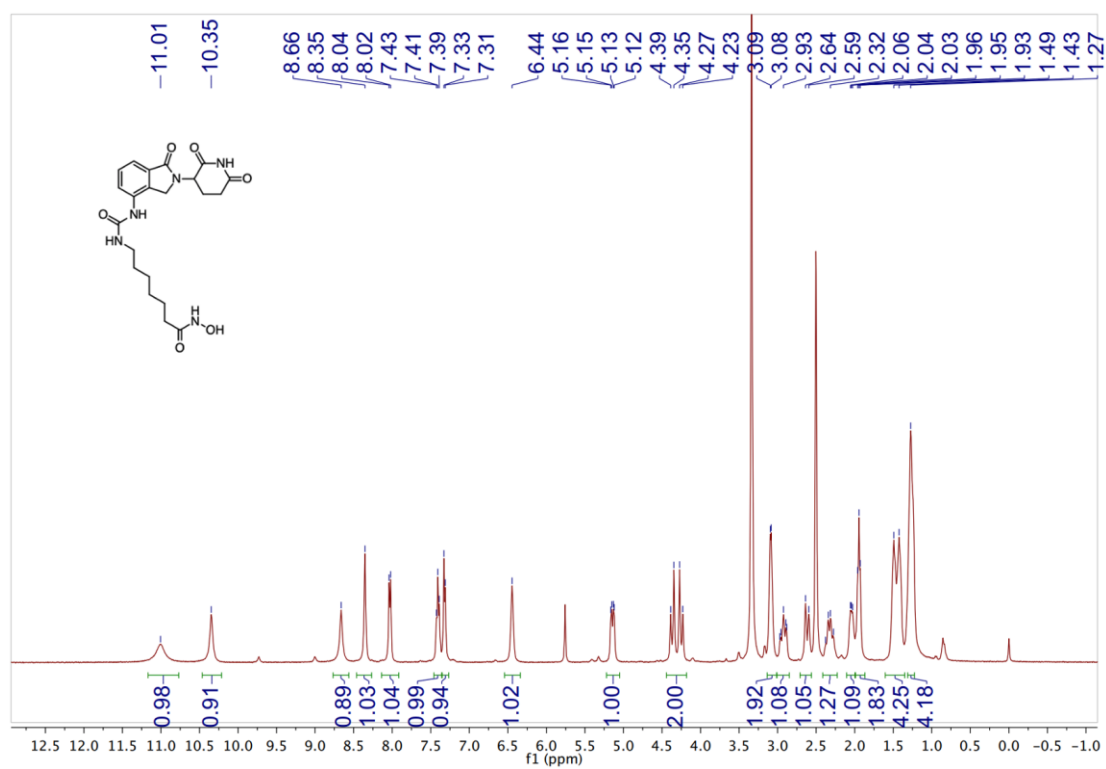
¹H-NMR for 15a



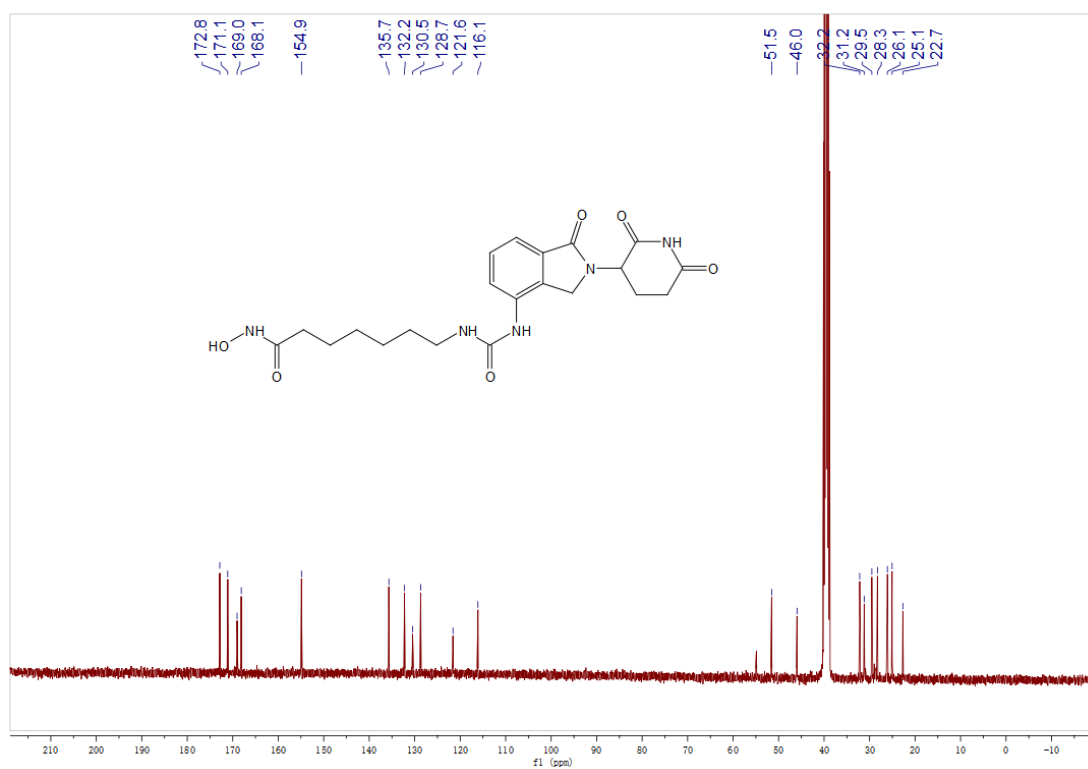
¹³C-NMR for **15a**



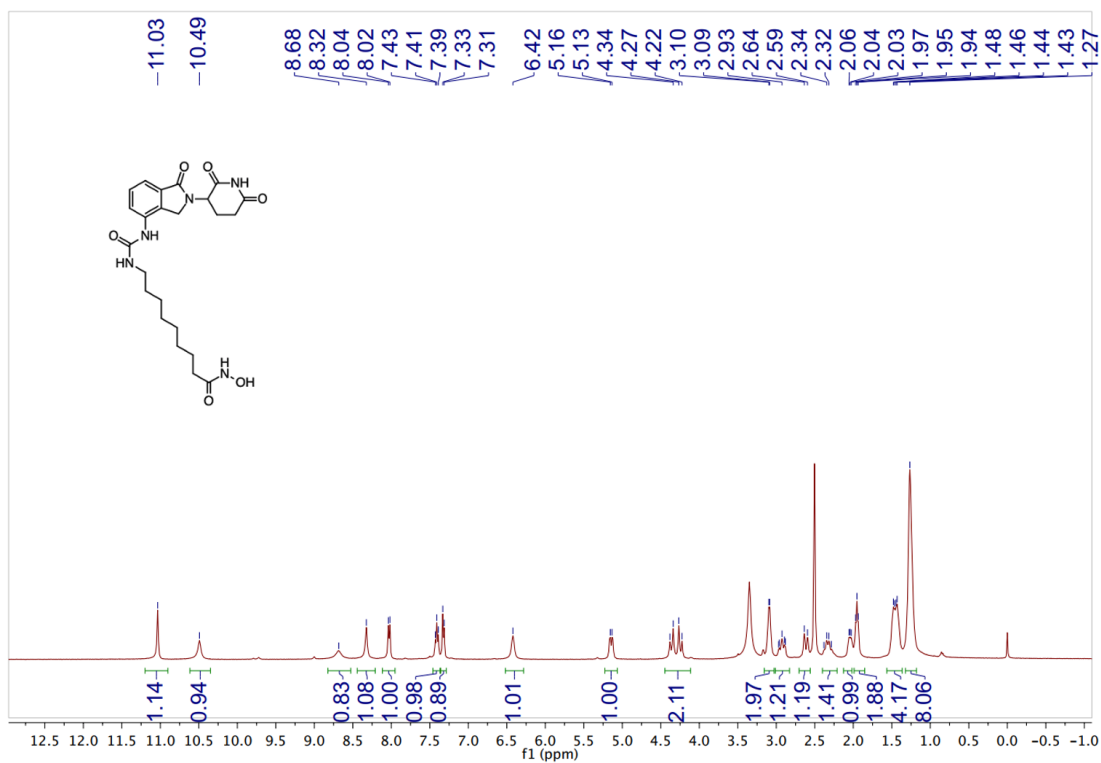
¹H-NMR for **15b**



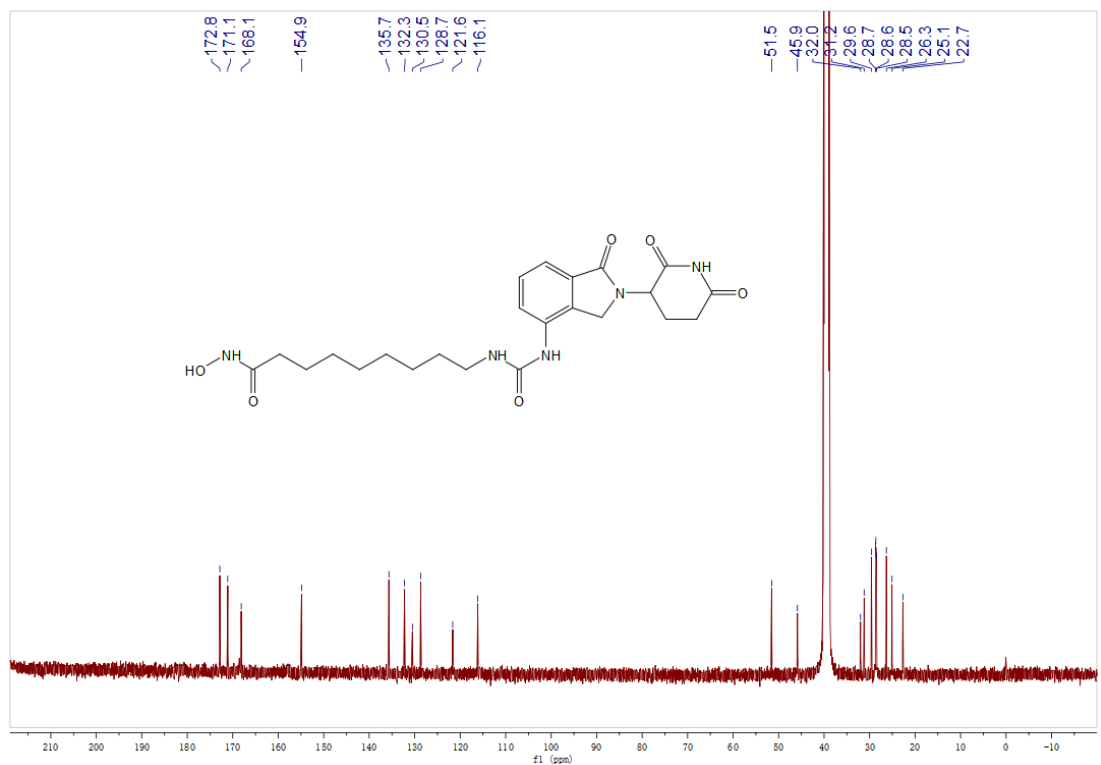
¹³C-NMR for **15b**



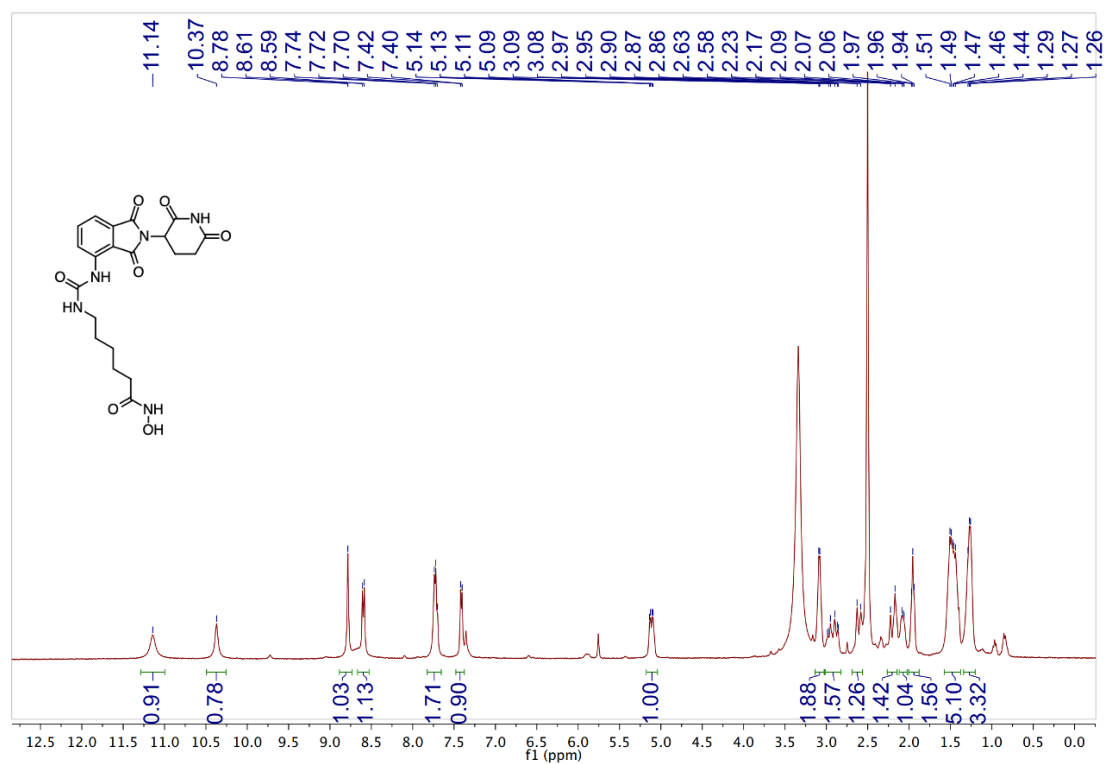
¹H-NMR for **15c**



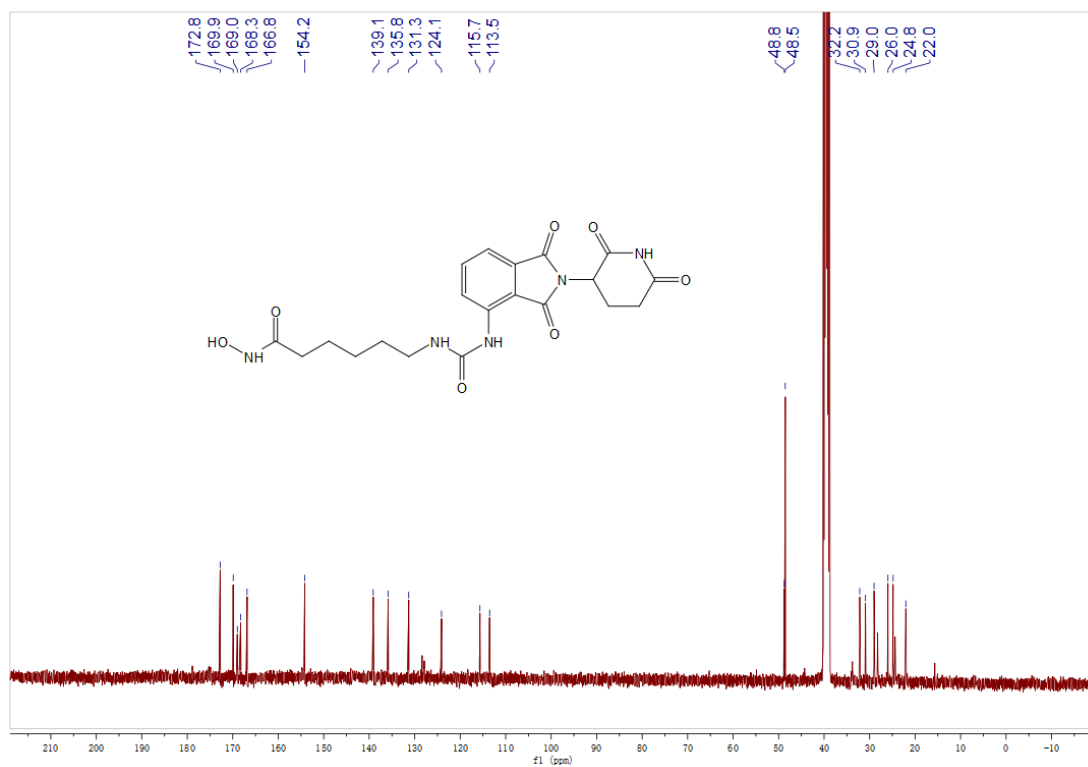
¹³C-NMR for 15c



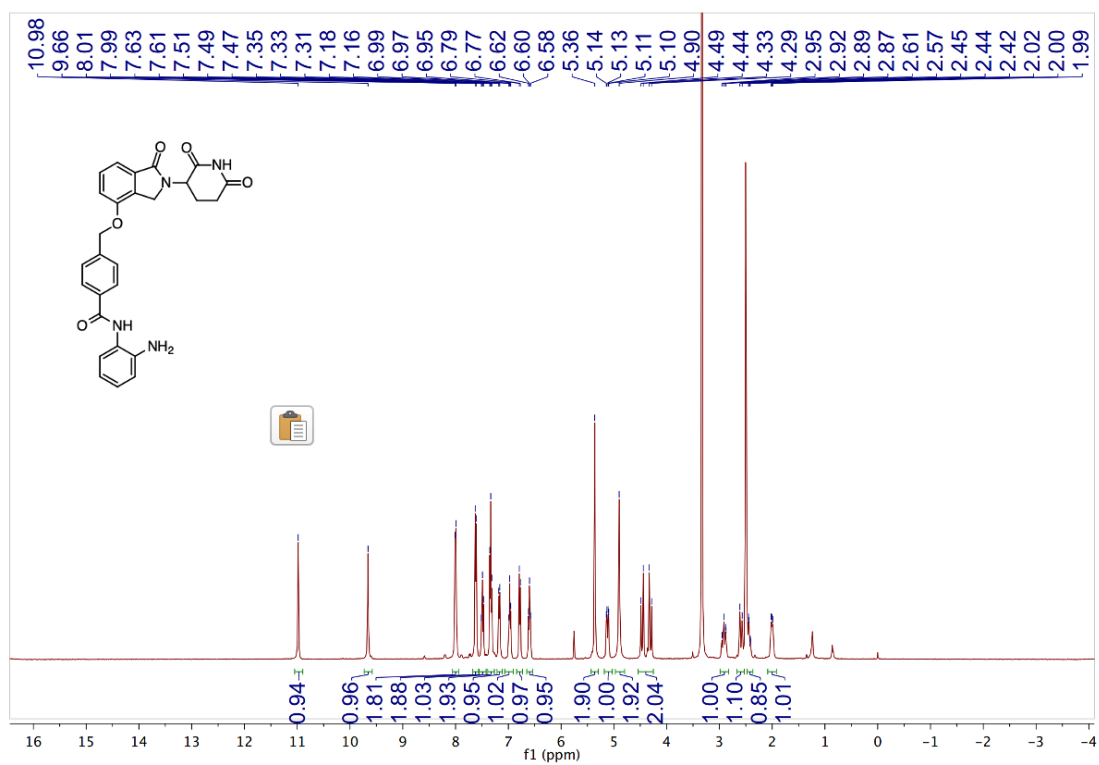
¹H-NMR for 15d



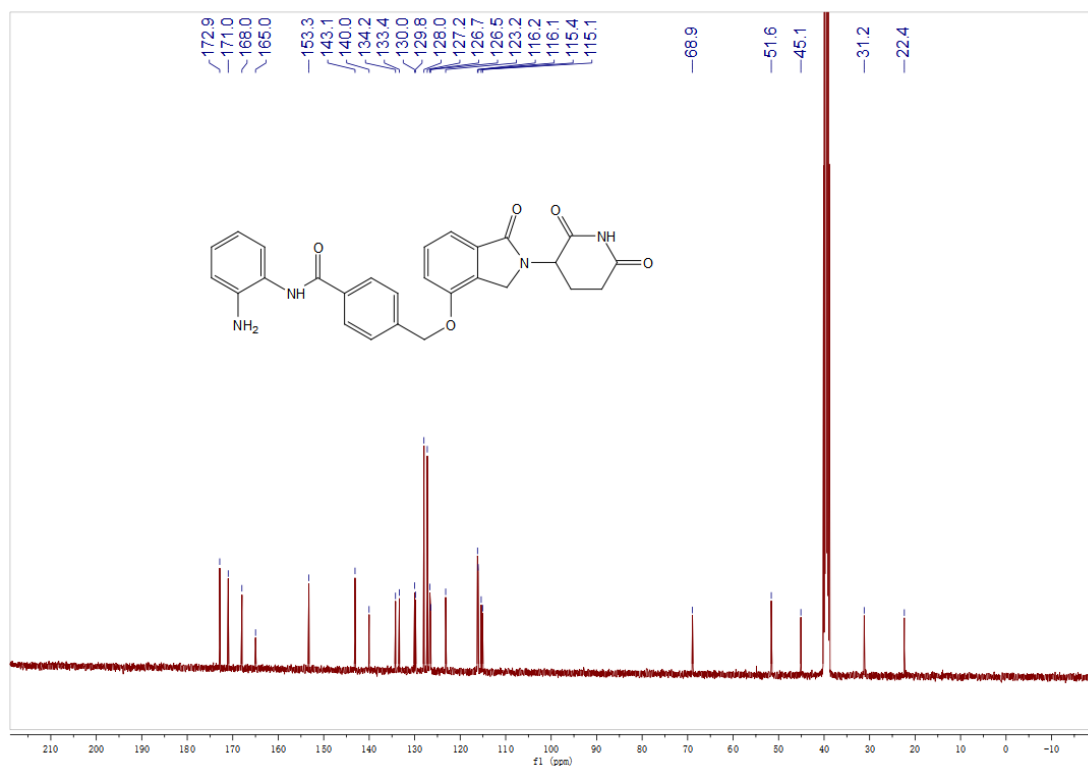
¹³C-NMR for 15d



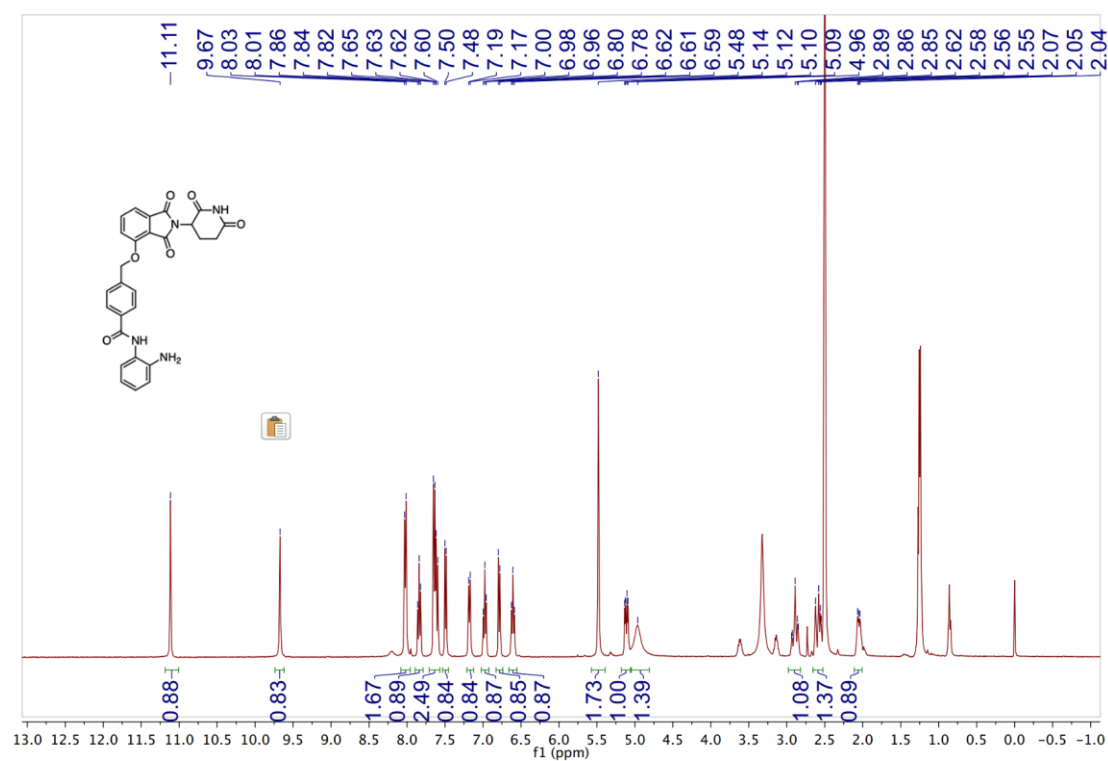
¹H-NMR for 21a



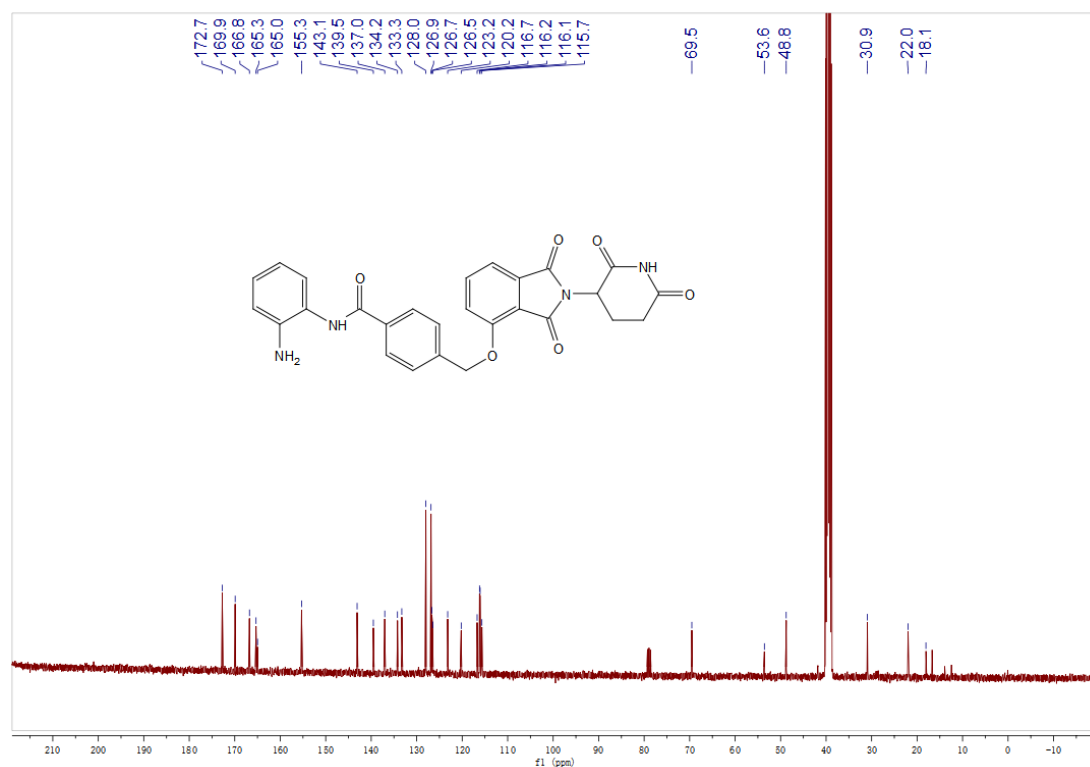
¹³C-NMR for 21a



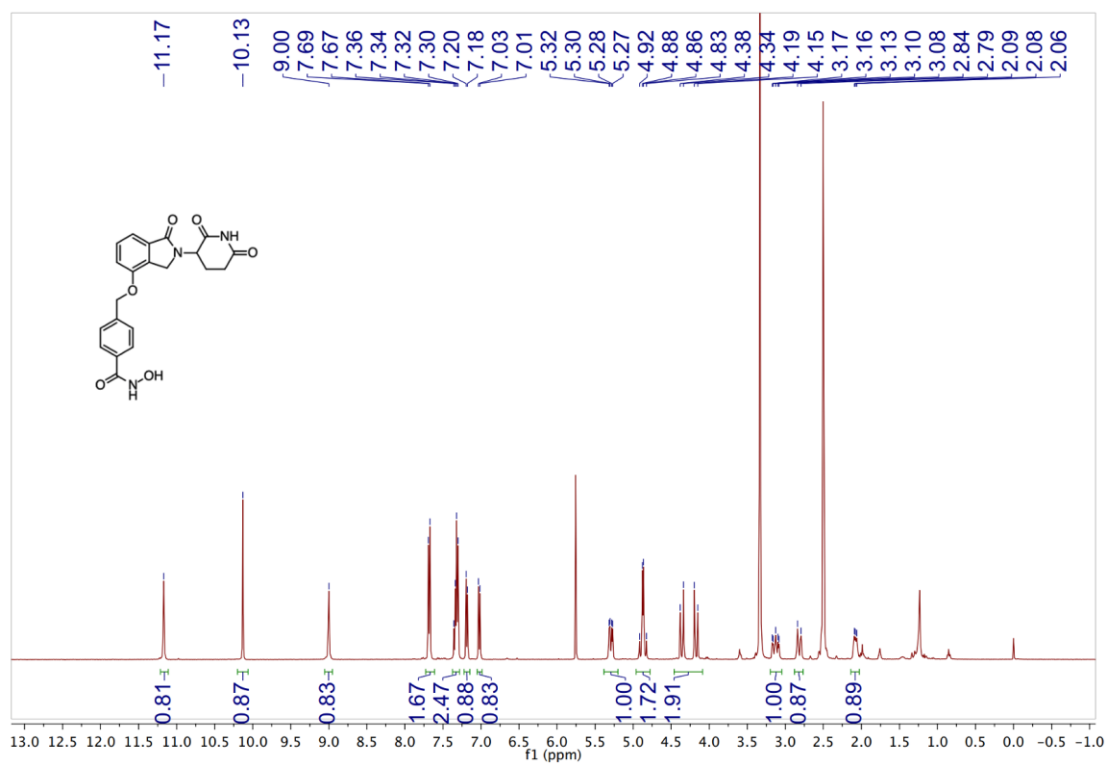
¹H-NMR for 21b



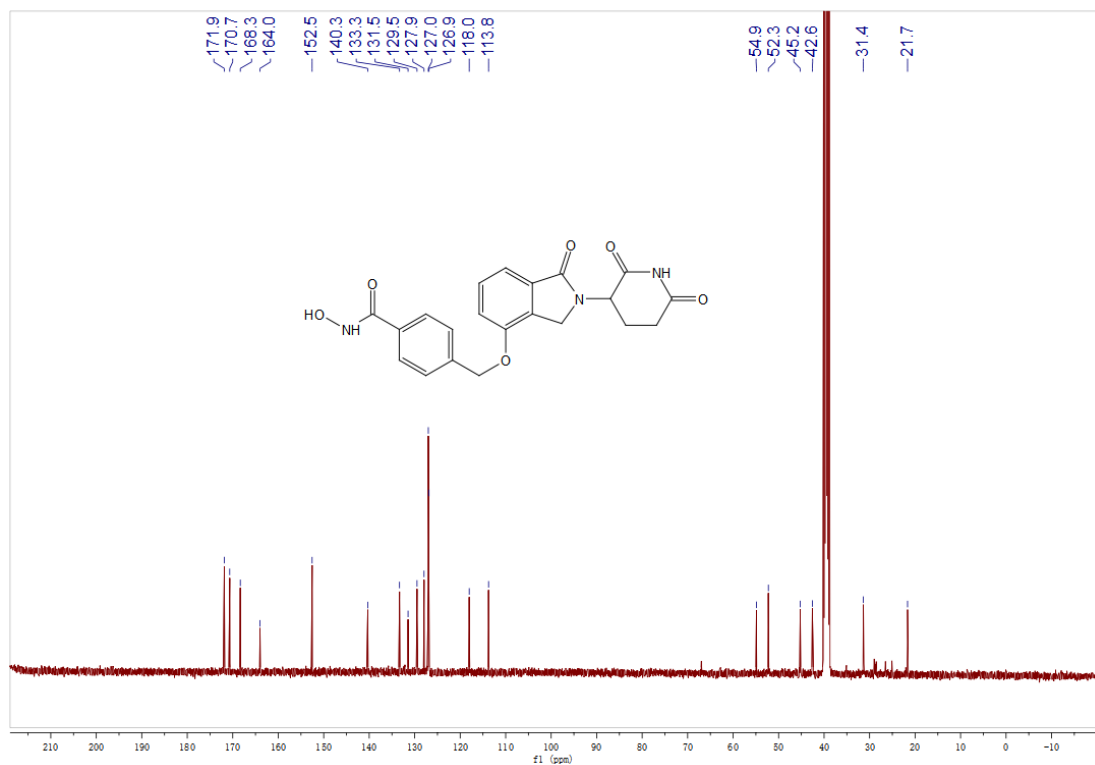
¹³C-NMR for 21b



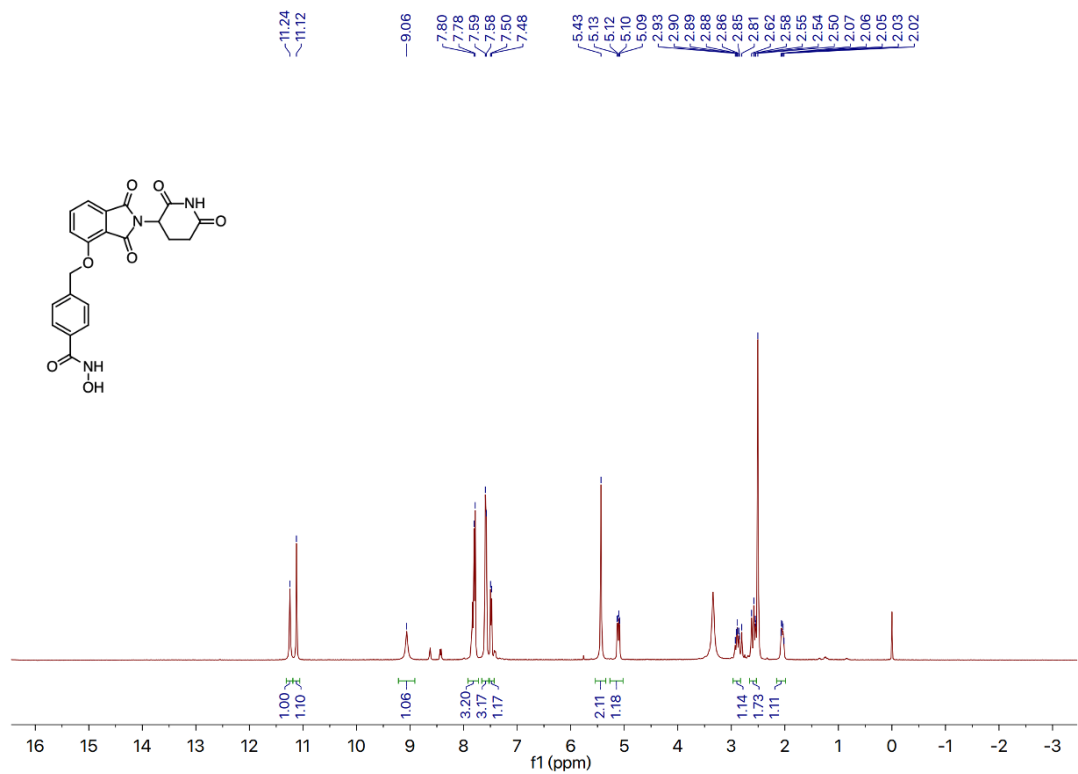
¹H-NMR for 23a



¹³C-NMR for **23a**



¹H-NMR for **23b**



¹³C-NMR for **23b**

