

## Shear induced crystallization of star and linear poly(L-lactide)s

J. Bojda\*, E. Piorkowska, G. Lapienis, A. Michalski  
Centre of Molecular and Macromolecular Studies, Polish Academy of Sciences,  
90-363 Lodz, Poland, Sienkiewicza 112

\*corresponding author : [jbojda@cbmm.lodz.pl](mailto:jbojda@cbmm.lodz.pl)

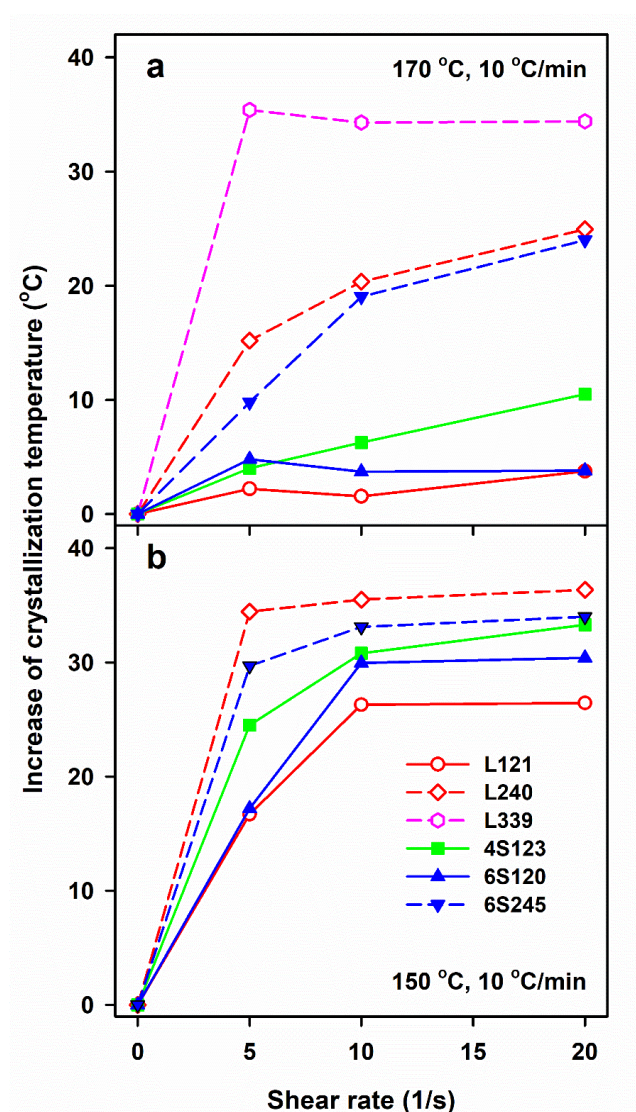


Figure S1. Increase of crystallization peak temperature,  $T_c - T_c^q$ , of PLLAs during cooling at 10 °C/min caused by shearing at 170 and 150 °C versus shear rate,  $\dot{\gamma}$ .  $T_c^q$  denotes the crystallization peak temperature of control specimens during cooling at 10 °C/min.

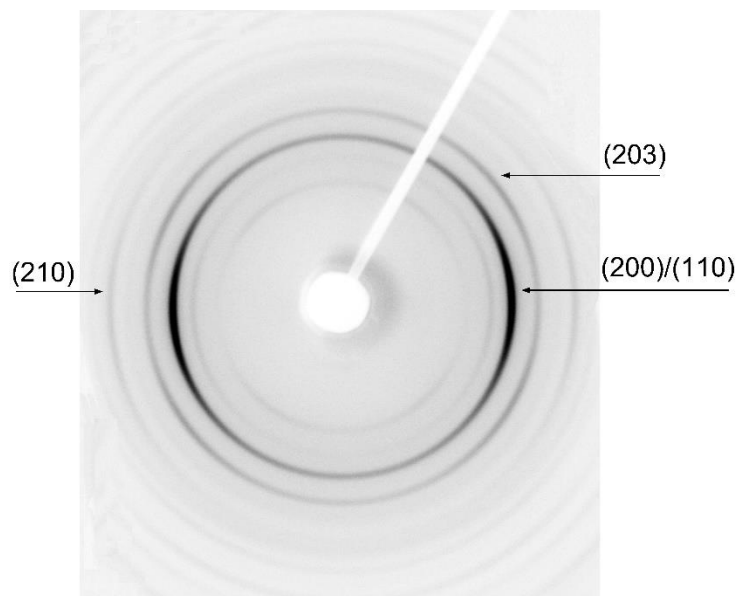


Figure S2. 2D-WAXS pattern of PLLA L339 sheared at 170 °C at 5 /s for 20 s and next cooled at 10 °C/min, with arrows indicating characteristic reflections.