

Supplementary material.

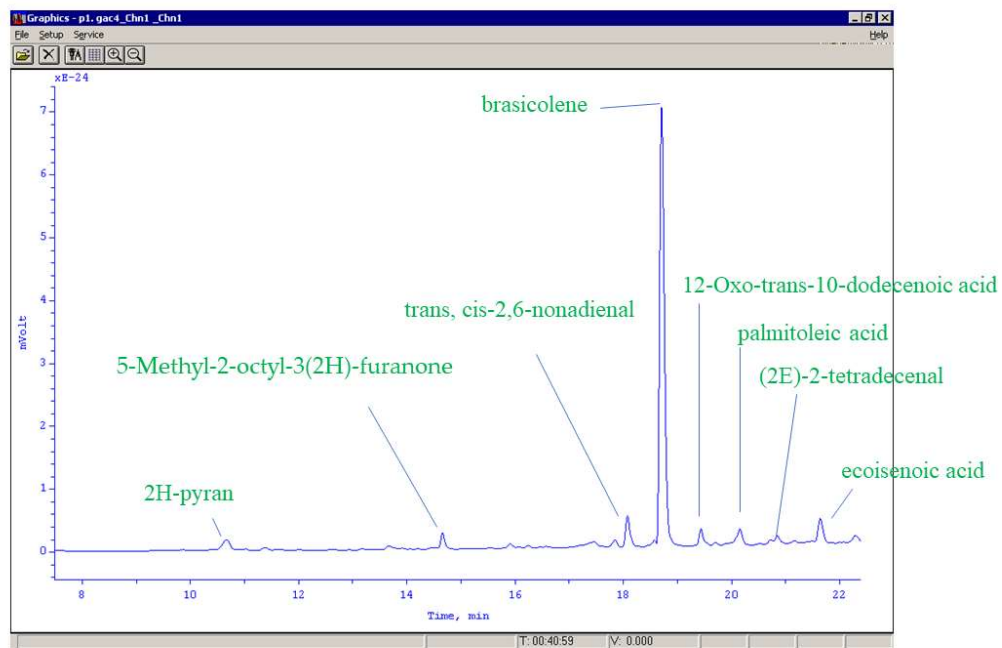


Figure S1. HPLC analysis on GLE determined that brassicolene was substantially more present as a prominent peak than the others. The majority of the substances were fatty acid putatives, trans, cis-2,6-nonadienal; 12-Oxo-trans-10-dodecenoic acid; palmitoleic acid, (2E)-2-tetradecenal, and ecoisenoic acid. In addition, 2H-pyran and furanone were also detected.

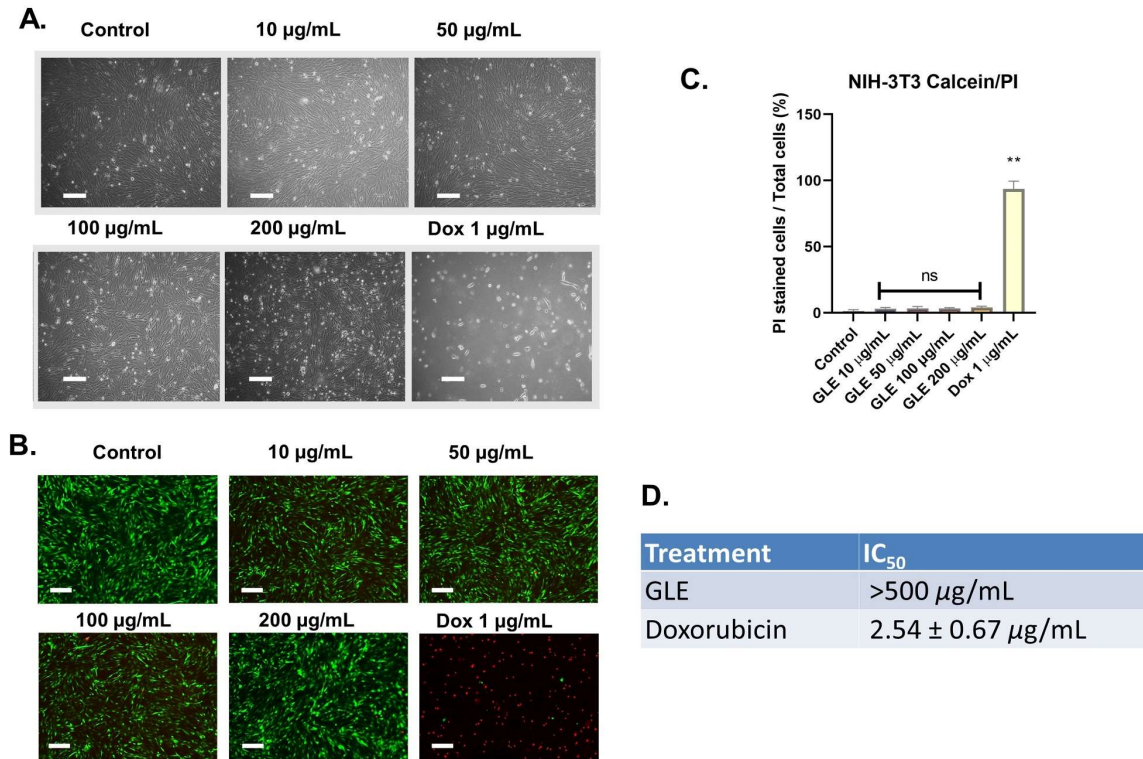


Figure S2. Cytotoxic effects of GLE in NIH-3T3 normal fibroblast cells treated for 72 h. A. Morphological observation of NIH-3T3 fibroblast cells after GLE and doxorubicin for 72h, scale = 50 μm , B. Viability staining with Calcein-AM (green) and PI (red) in NIH-3T3 fibroblast cells treated with GLE or Doxorubicin for 72h, C. The percentage of PI-stained cells that are dead cells. D. Respective IC₅₀ values of GLE and Doxorubicin against NIH-3T3 fibroblast cells. ** indicates significant difference ($p < 0.01$) compared to control. ns indicates no significant difference compared to control group. Scale=100 μm .