

Supplementary Materials
Embryonic Development of Avian Pineal Secretory Activity—A Lesson from the Goose Pineal Organs in Superfusion Culture

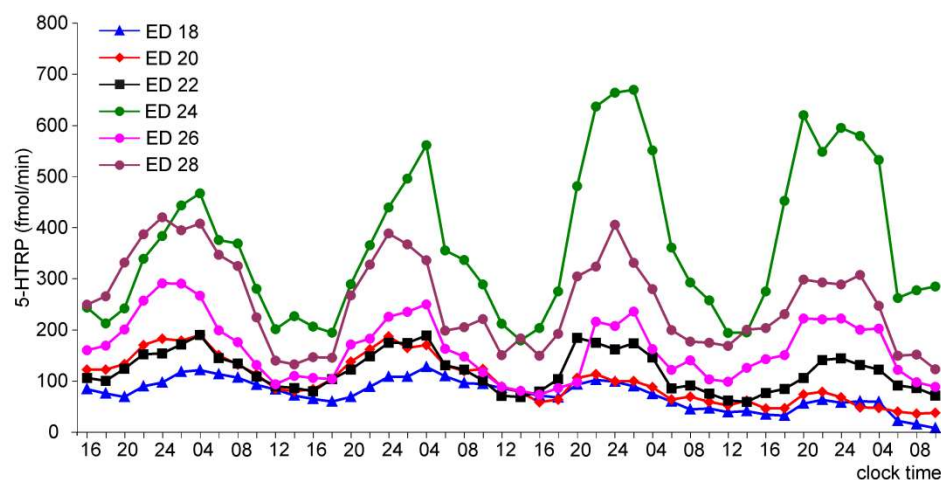


Figure S1. Comparison of 5-HTRP release from the pineal organs of ED 18 – ED 28 embryos incubated under a 12L:12D cycle.

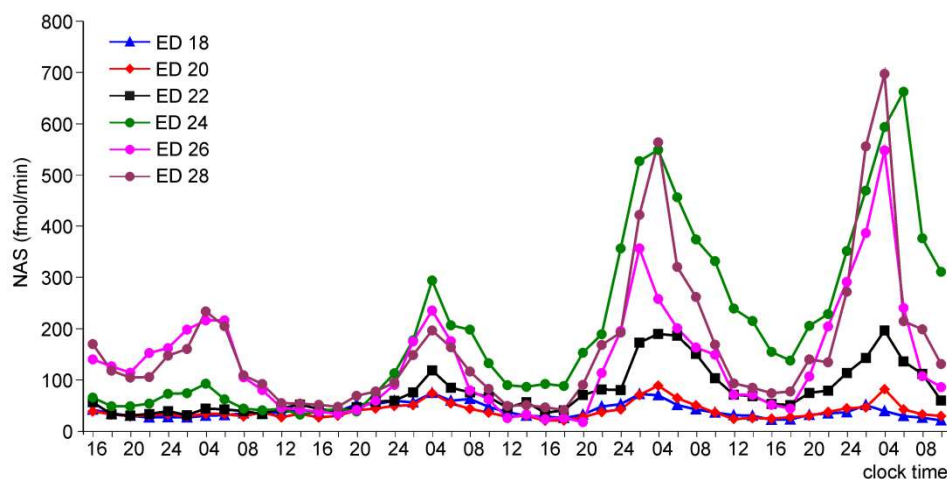


Figure S2. Comparison of NAS release from the pineal organs of ED 18 – ED 28 embryos incubated under a 12L:12D cycle.

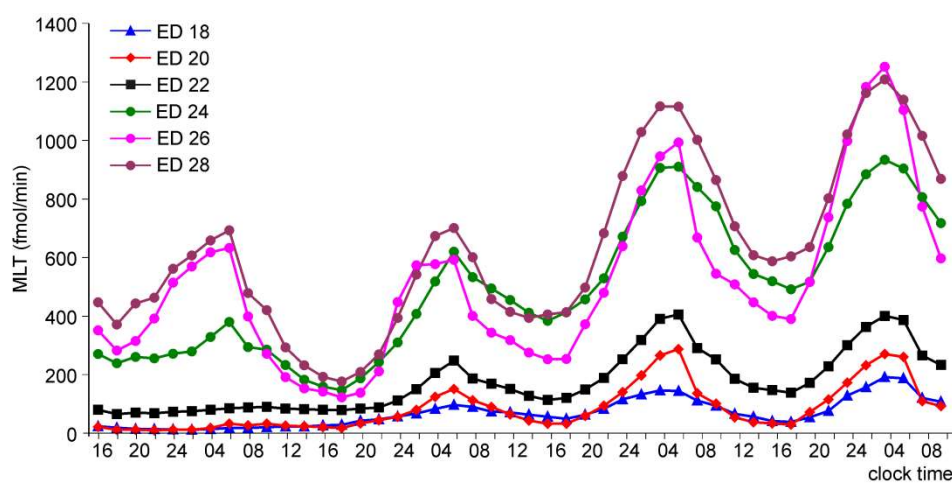


Figure S3. Comparison of MLT release from the pineal organs of ED 18 – ED 28 embryos incubated under a 12L:12D cycle.

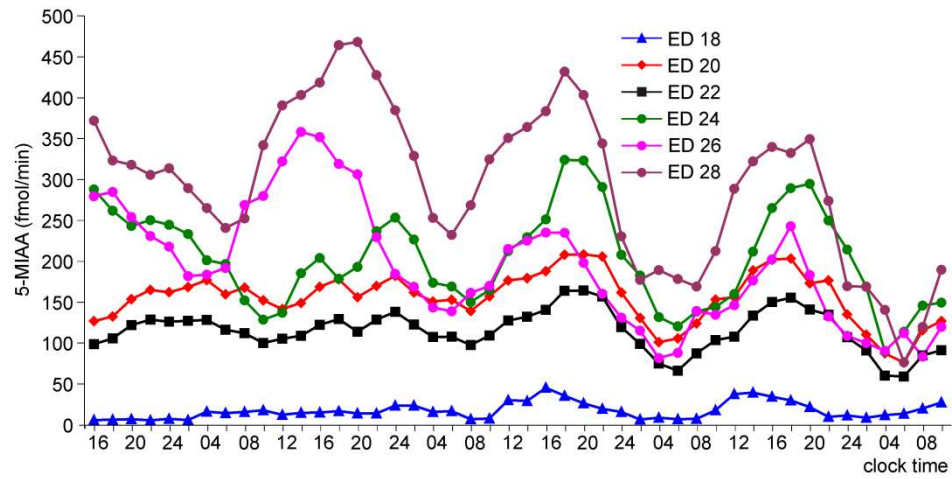


Figure S4. Comparison of 5-MIAA release from the pineal organs of ED 18 – ED 28 embryos incubated under a 12L:12D cycle.

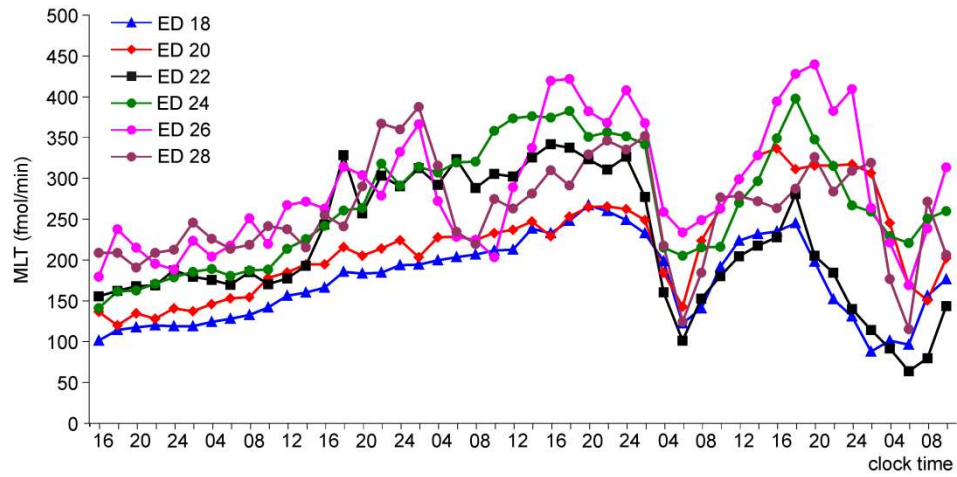


Figure S5. Comparison of 5-HTRP release from the pineal organs of ED 18 – ED 28 embryos incubated under a 12L:12D cycle and treated with NE during photophase.

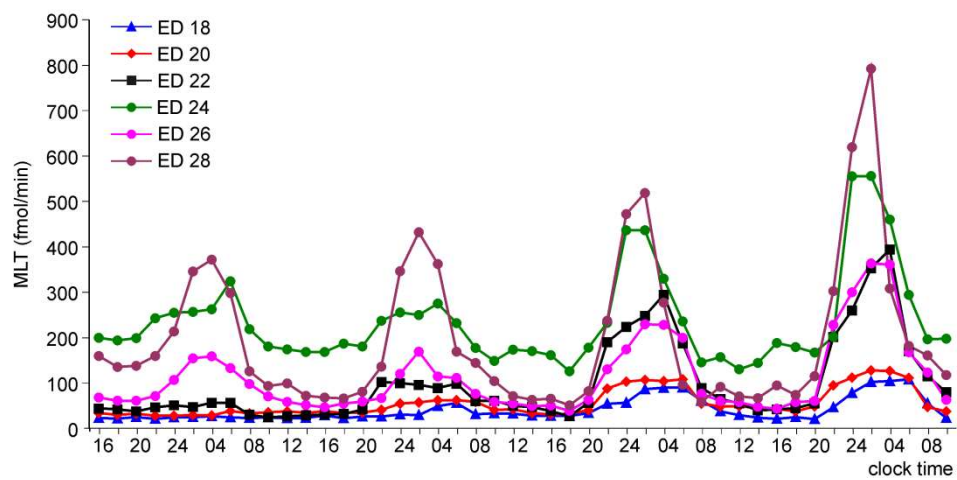


Figure S6. Comparison of NAS release from the pineal organs of ED 18 – ED 28 embryos incubated under a 12L:12D cycle and treated with NE during photophase.

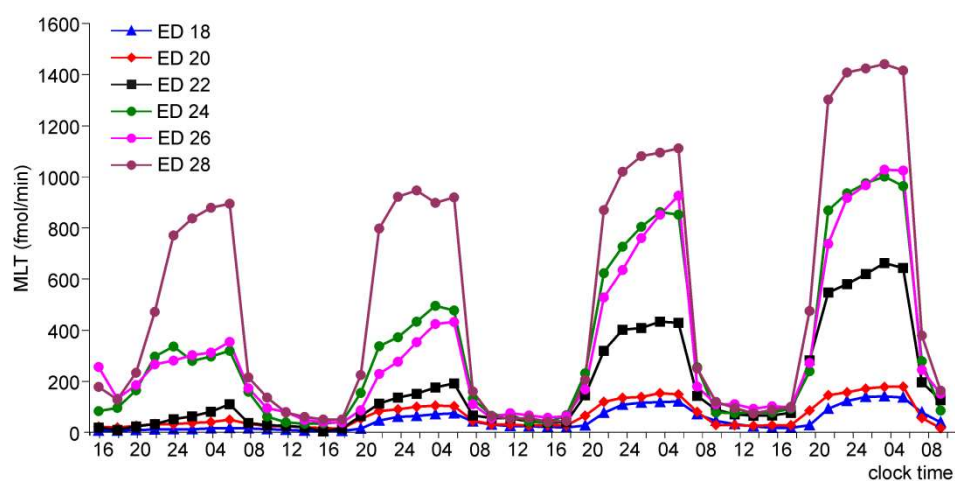


Figure S7. Comparison of MLT release from the pineal organs of ED 18 – ED 28 embryos incubated under a 12L:12D cycle and treated with NE during photophase.

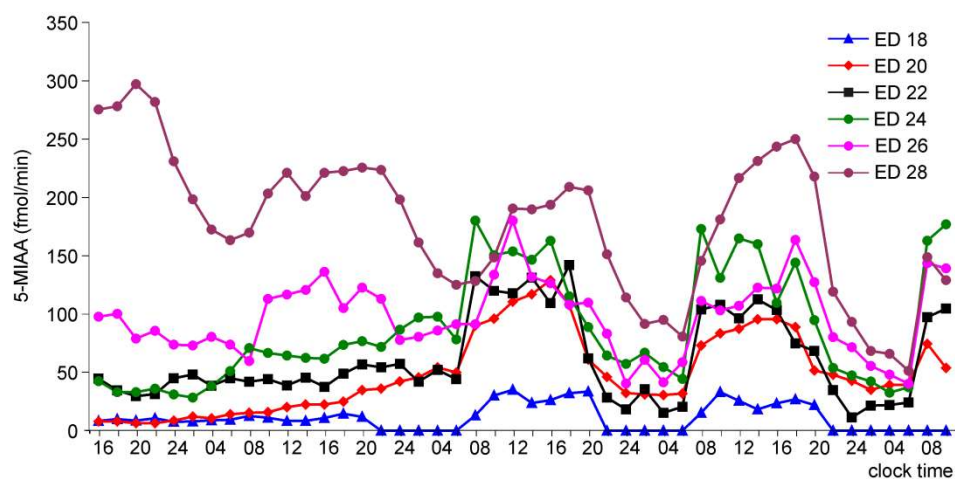


Figure S8. Comparison of 5-MIAA release from the pineal organs of ED 18 – ED 28 embryos incubated under a 12L:12D cycle and treated with NE during photophase.

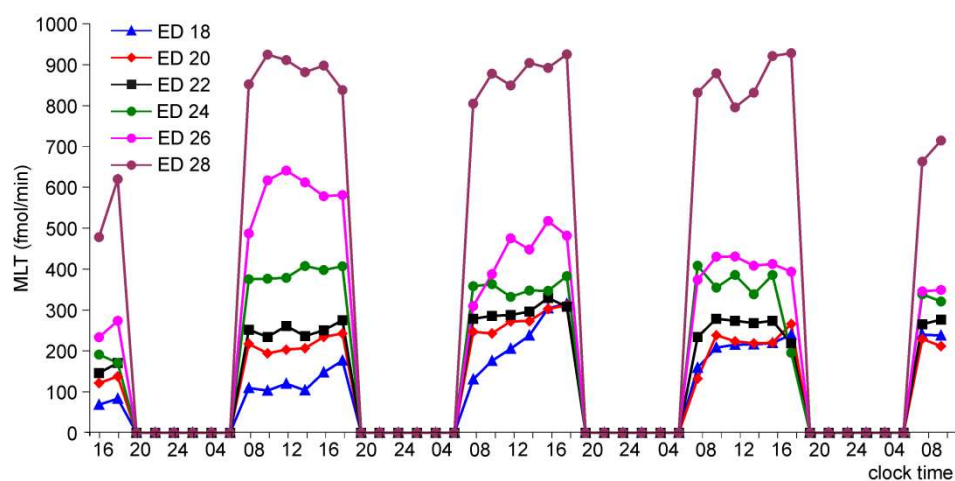


Figure S9. Comparison of 5-HT release from the pineal organs of ED 18 – ED 28 embryos incubated under a 12L:12D cycle and treated with NE during photophase.

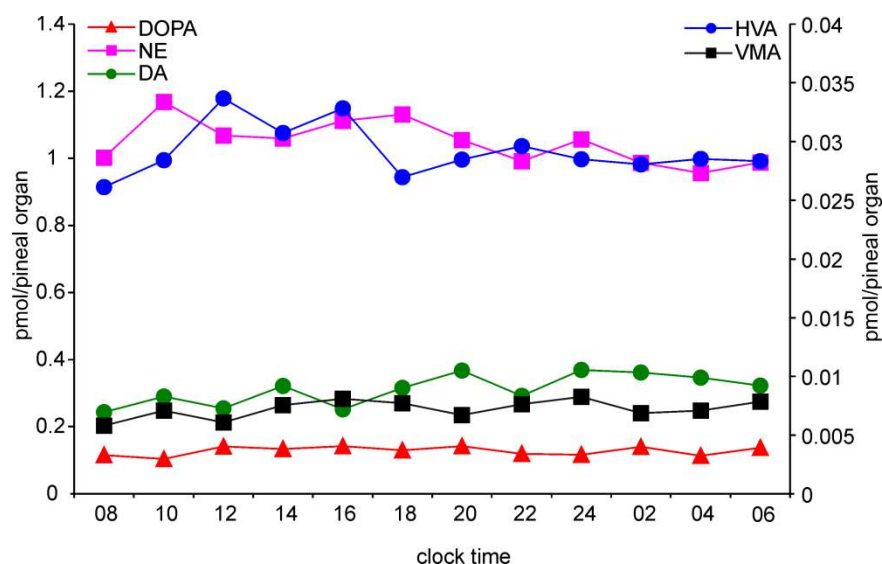


Figure S10. Content (means, n=5) of norepinephrine (NE), vanillylmandelic acid (VMA), dopamine (DA), homovanillic acid (HVA), and DOPA in the pineal organs of ED 24 embryos collected every 2-hrs. The means did not differ significantly between time-points.

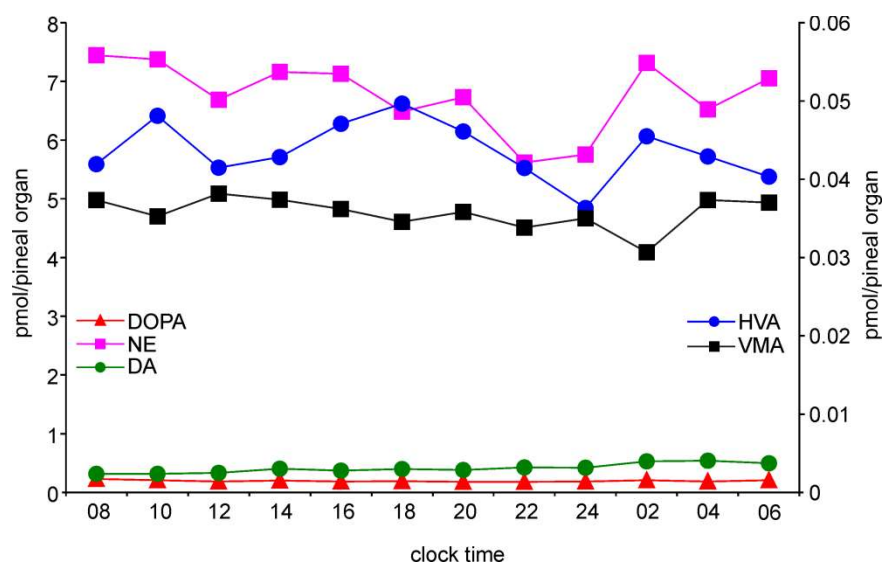


Figure S11. Content (means, n=5) of norepinephrine (NE), vanillylmandelic acid (VMA), dopamine (DA), homovanillic acid (HVA), and DOPA in the pineal organs of ED 26 embryos collected every 2-hrs. The means did not differ significantly between time-points.

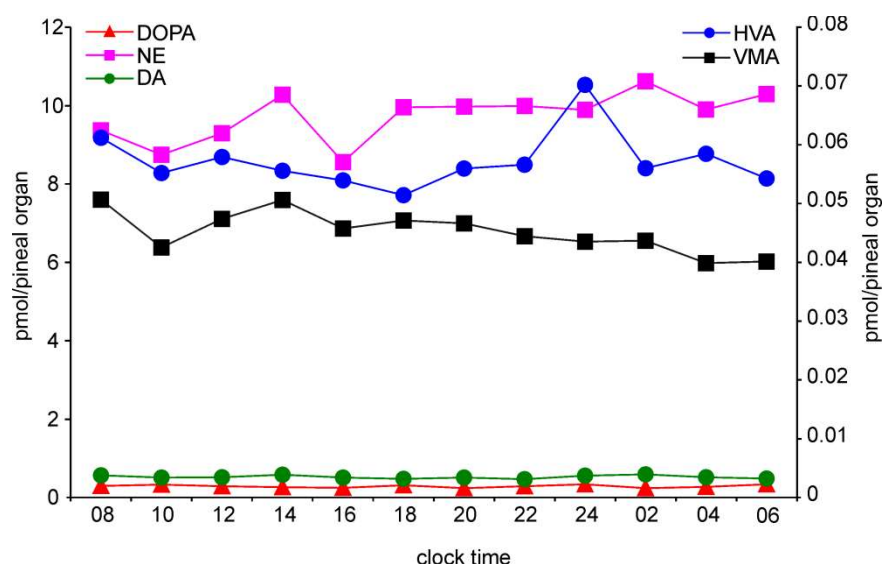


Figure S12. Content (means, n=5) of norepinephrine (NE), vanillylmandelic acid (VMA), dopamine (DA), homovanillic acid (HVA), and DOPA in the pineal organs of ED 28 embryos collected every 2-hrs. The means did not differ significantly between time-points.