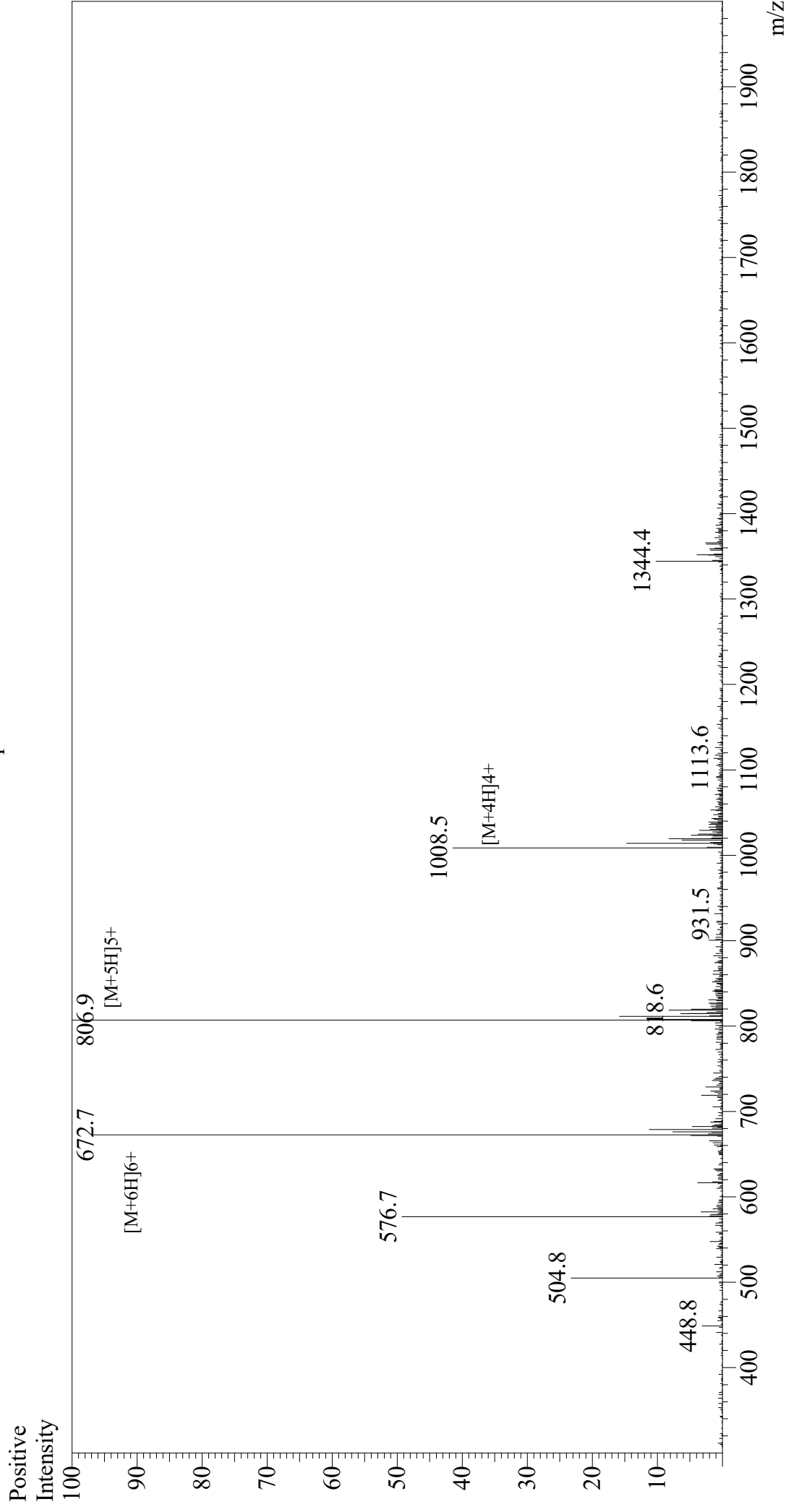


# Mass Spectrum



Sample Information  
 Month-Day Processed : 12/08/20  
 Time Processed : 6:54:04 PM  
 Injection Volume : 0.3  
 Sample Name : CeHS-1 GPK  
 Sample ID : U461AFJ270-5  
 Theoretical MW : 4030.85  
 Observed MW : 4029.5

Interface : ESI  
 Nebulizing Gas Flow : 1.5L/min  
 CDL Temp : 250  
 Block Temp : 200

Equipment : GK11010007  
 Interface Bias : +4.5 kV  
 Drying Gas Flow : 5 L/min  
 T.Flow : 0.2 ml/min  
 B.conc : 50% H<sub>2</sub>O/50% MeOH