

Supplementary Materials

High Throughput Screening of the NatureBank 'Marine Collection' in a *Haemonchus* Bioassay Identifies Anthelmintic Activity in Extracts from a Range of Sponges from Australian Waters

Aya C. Taki¹, Joseph J. Byrne¹, Abdul Jabbar¹, Kah Yean Lum², Sasha Hayes², Russell S. Addison², Kelsey S. Ramage², Andreas Hofmann¹, Merrick G. Ekins^{2,3}, Tao Wang¹, Bill C. H. Chang¹, Rohan A. Davis² and Robin B. Gasser^{1*}

¹ Department of Veterinary Biosciences, Melbourne Veterinary School, Faculty of Veterinary and Agricultural Sciences, The University of Melbourne, Parkville, Victoria 3010, Australia; aya.taki@unimelb.edu.au (A.C.T.); byrnej1@unimelb.edu.au (J.J.B.); jabbara@unimelb.edu.au (A.J.); a.hofmann@structuralchemistry.org (A.H.); tao.wang1@unimelb.edu.au (T.W.); bchang@yourgene.com.tw (B.C.H.C.)

² Griffith Institute for Drug Discovery, School of Environment and Science, Griffith University, Brisbane, Queensland 4111, Australia; k.lum@griffith.edu.au (K.Y.L.); sasha.hayes2@griffithuni.edu.au (S.H.); r.addison@griffith.edu.au (R.S.A.); kelsey.ramage@griffithuni.edu.au (K.S.R.); r.davis@griffith.edu.au (R.A.D.)

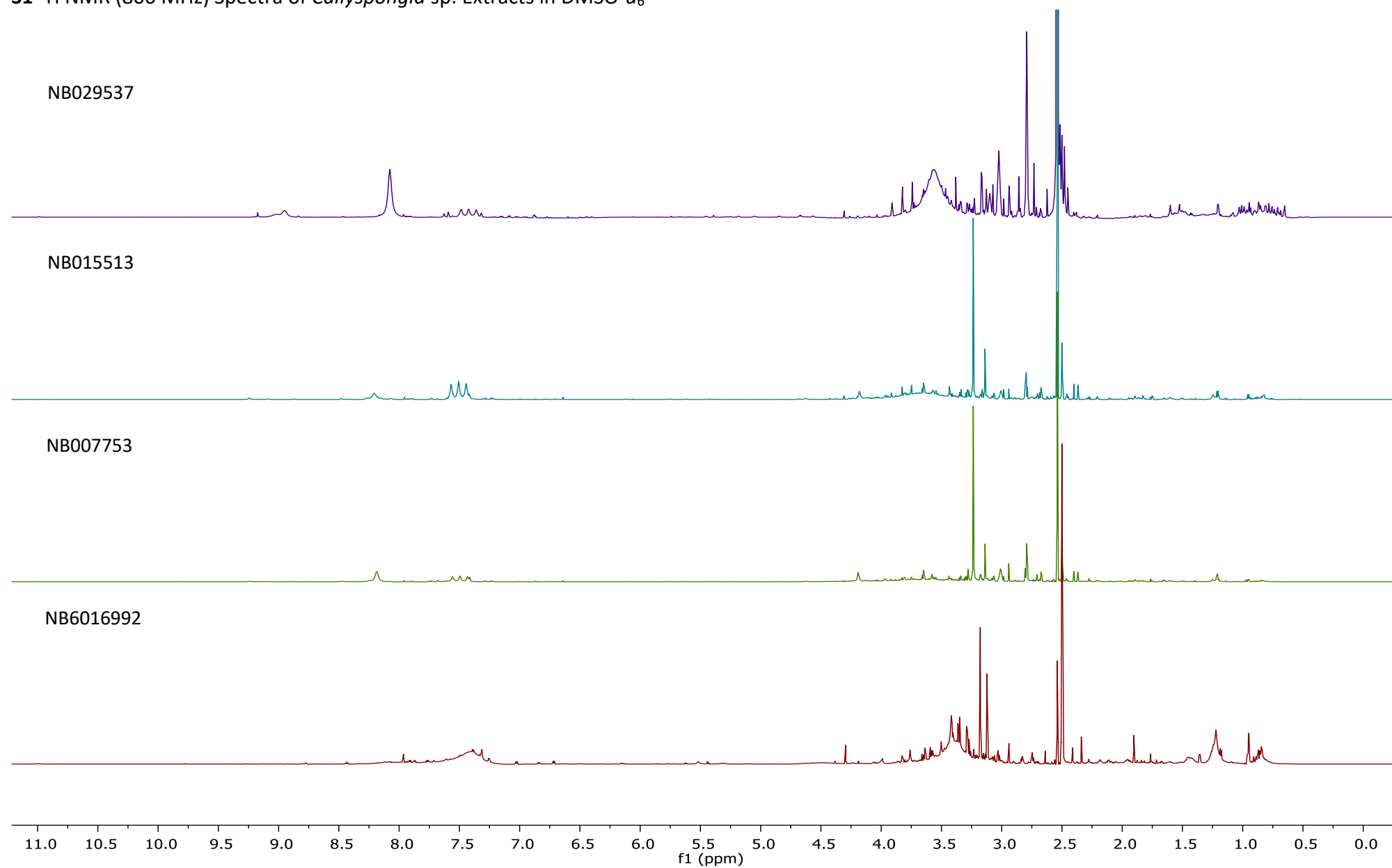
³ Queensland Museum, South Brisbane, Queensland 4101, Australia; merrick.ekins@qm.qld.gov.au (M.G.E.).

* Correspondence: robinbg@unimelb.edu.au (R.B.G.)

Contents

- S1** ^1H NMR (800 MHz) Spectra of *Callyspongia* sp. Extracts in DMSO- d_6
- S2** ^1H NMR (800 MHz) Spectra of *Clathria* sp. Extracts in DMSO- d_6
- S3** ^1H NMR (800 MHz) Spectra of *Coscinoderma mathewsi* Extracts in DMSO- d_6
- S4** ^1H NMR (800 MHz) Spectra of *Haliclona* sp. Extracts in DMSO- d_6
- S5** ^1H NMR (800 MHz) Spectra of *Oceanapia* sp. Extracts in DMSO- d_6
- S6** ^1H NMR (800 MHz) Spectra of *Phyllospongia* sp. Extracts in DMSO- d_6
- S7** ^1H NMR (800 MHz) Spectra of *Psammocinia* sp. Extracts in DMSO- d_6
- S8** ^1H NMR (800 MHz) Spectra of *Rhabdastrella globostellata* Extracts in DMSO- d_6
- S9** ^1H NMR (800 MHz) Spectra of *Didemnum* sp. Extracts in DMSO- d_6
- S10** ^1H NMR (800 MHz) Spectra of *Acanthophora muscoides*, *Agelas axifera*, *Ceratopsion clavatum*, *Chalinula* sp. and *Cinachyrella (Raphidotethya) enigmatica* Extracts in DMSO- d_6
- S11** ^1H NMR (800 MHz) Spectra of *Citronia* sp., *Cymbastela coralliophila*, *Desmacella* sp., *Echinochalina (Protophlitaspongia)* sp. and *Endectyon* sp. Extracts in DMSO- d_6
- S12** ^1H NMR (800 MHz) Spectra of *Erylus amissus*, *Fascaplysinopsis reticulata*, *Gelliodes* sp., *Ianthella flabelliformis* and *Leucetta microraphis* Extracts in DMSO- d_6
- S13** ^1H NMR (800 MHz) Spectra of *Petromica (Chaladesma) pacifica*, *Polyfibrospongia flabellifera*, *Polycarpa aurata* and *Sarcophyton cherbonnieri* Extracts in DMSO- d_6

S1 ^1H NMR (800 MHz) Spectra of *Callyspongia* sp. Extracts in $\text{DMSO-}d_6^a$



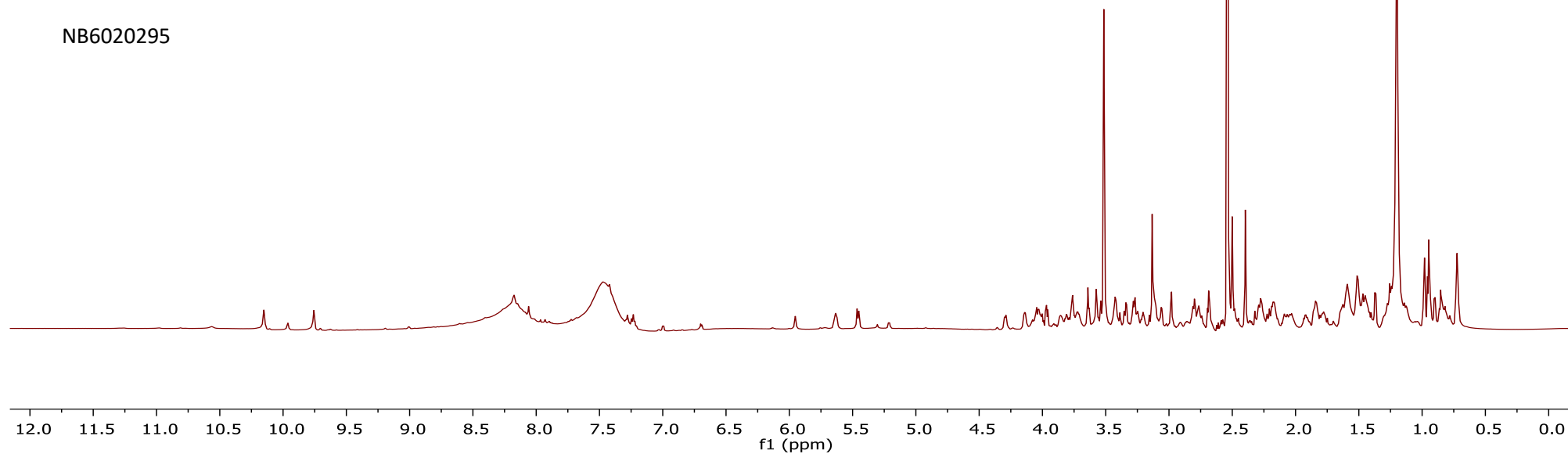
^aSinglet at δ_{H} 2.54 represents DMSO residual peak

S2 ^1H NMR (800 MHz) Spectra of *Clathria* sp. Extracts in $\text{DMSO}-d_6^a$

NB6014898

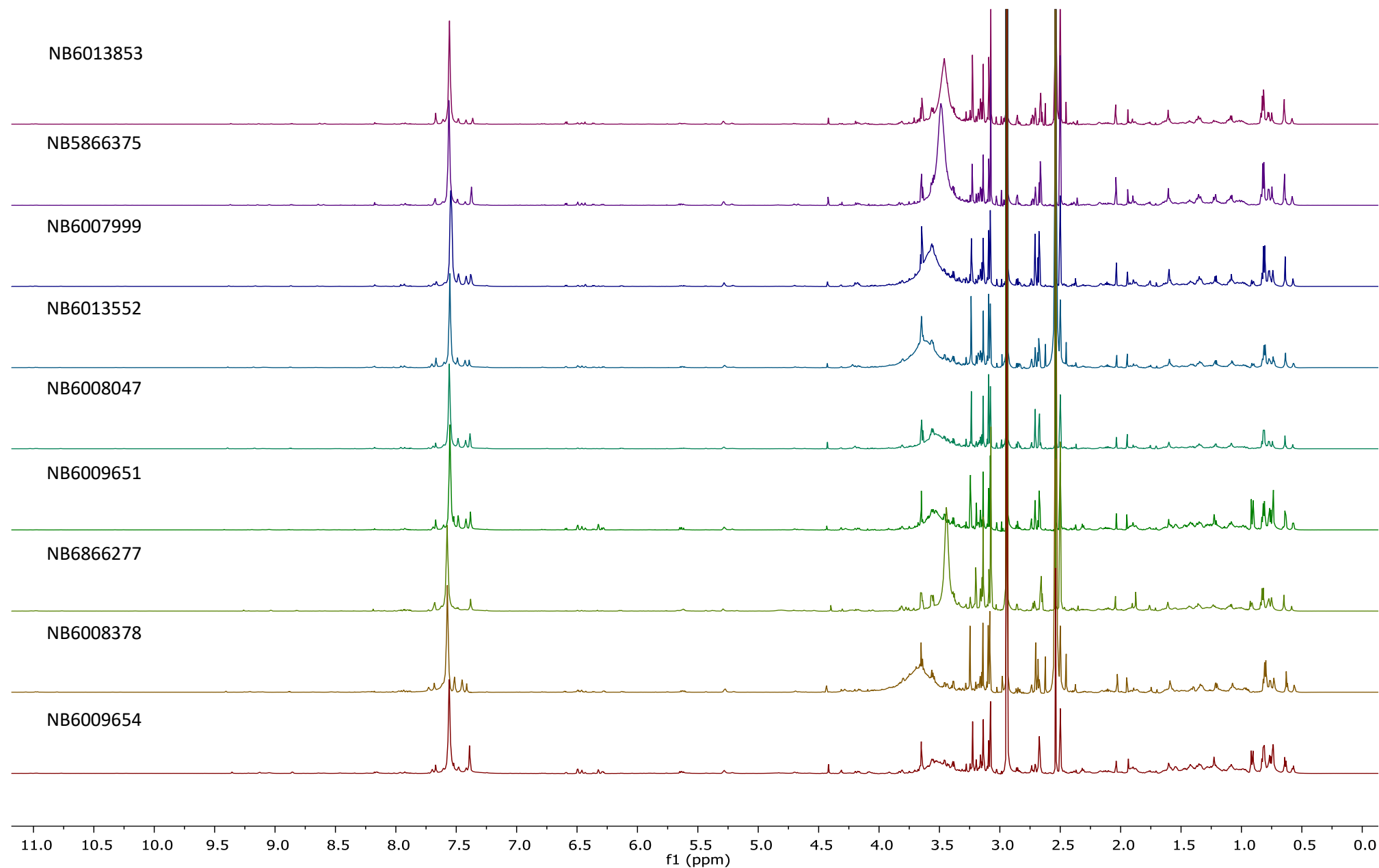


NB6020295



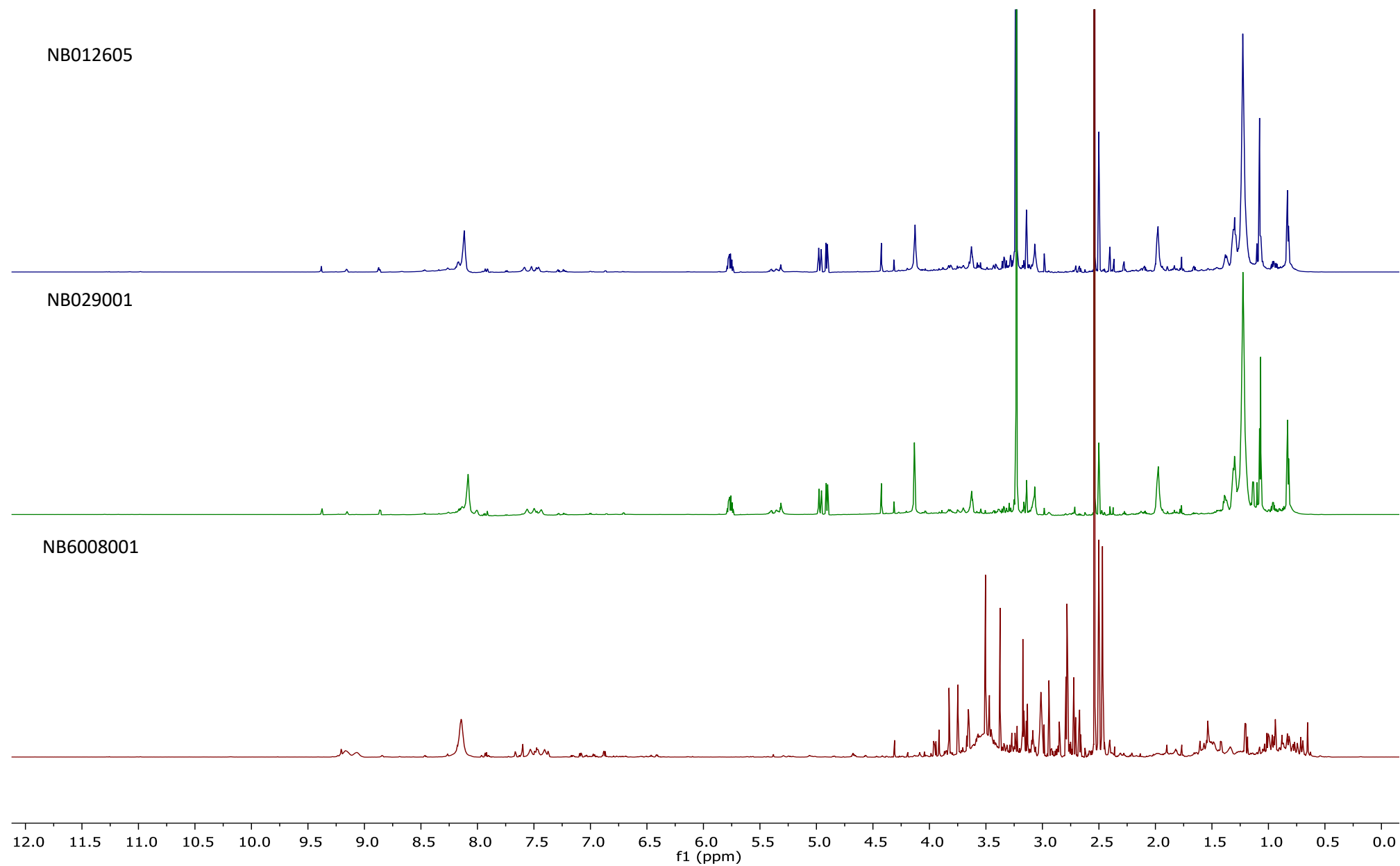
^aSinglet at δ_{H} 2.54 represents DMSO residual peak

S3 ^1H NMR (800 MHz) Spectra of *Coscinoderma mathewsi* Extracts in $\text{DMSO}-d_6^a$



^aSinglet at δ_{H} 2.54 represents DMSO residual peak

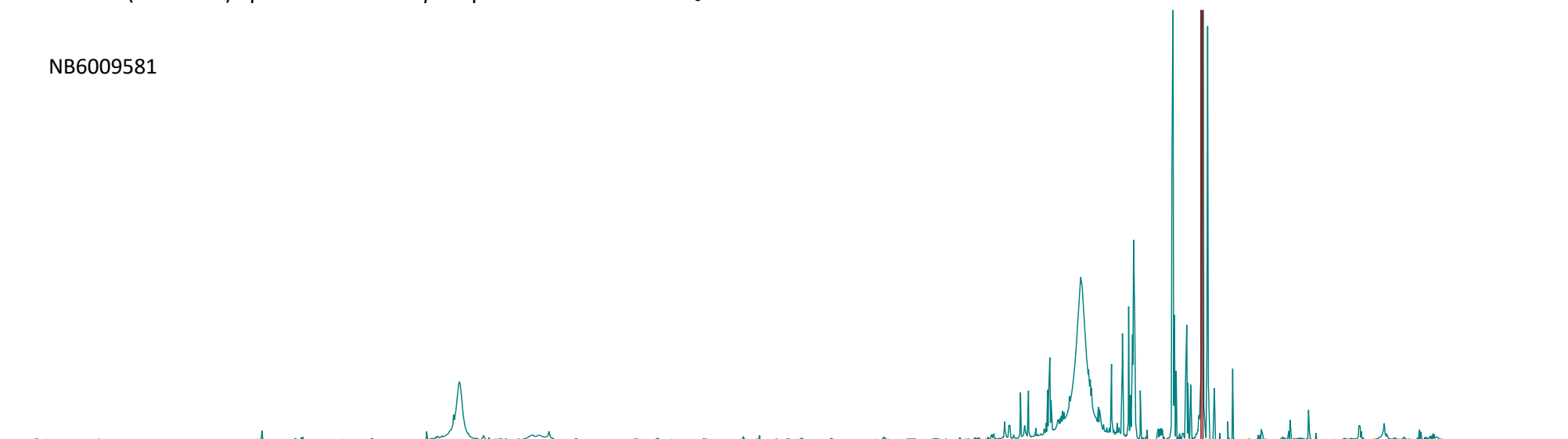
S4 ^1H NMR (800 MHz) Spectra of *Haliclona* sp. Extracts in $\text{DMSO}-d_6^a$



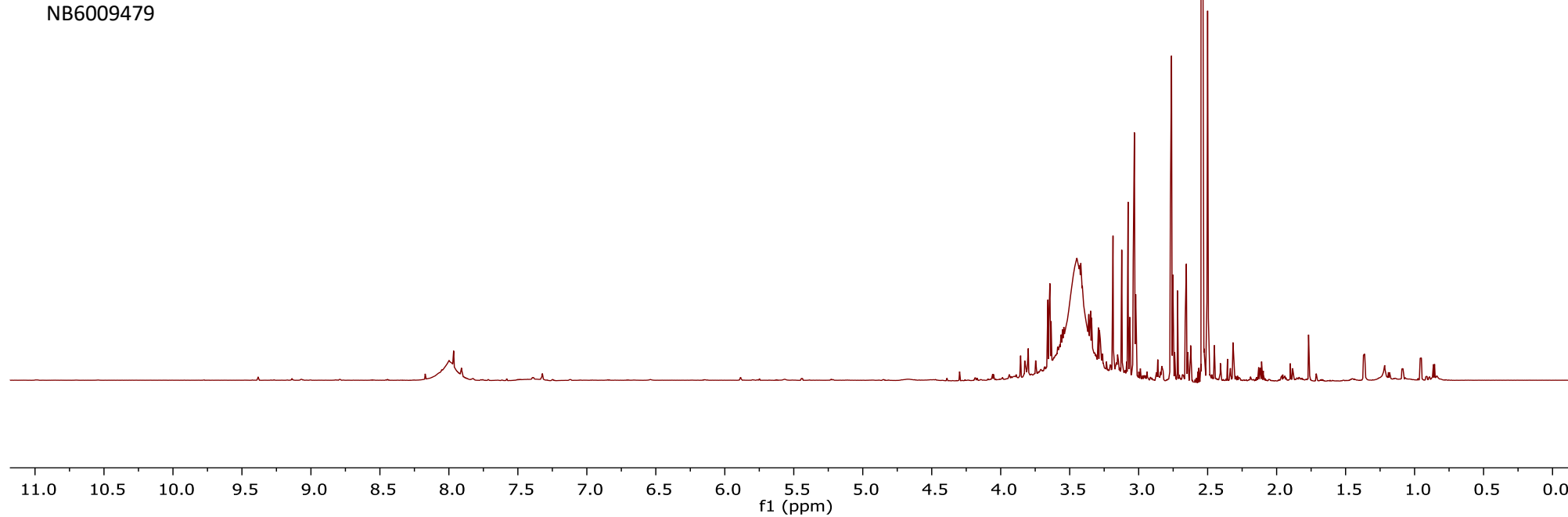
^aSinglet at $\delta_{\text{H}} 2.54$ represents DMSO residual peak

S5 ^1H NMR (800 MHz) Spectra of *Oceanapia* sp. Extracts in $\text{DMSO}-d_6^a$

NB6009581

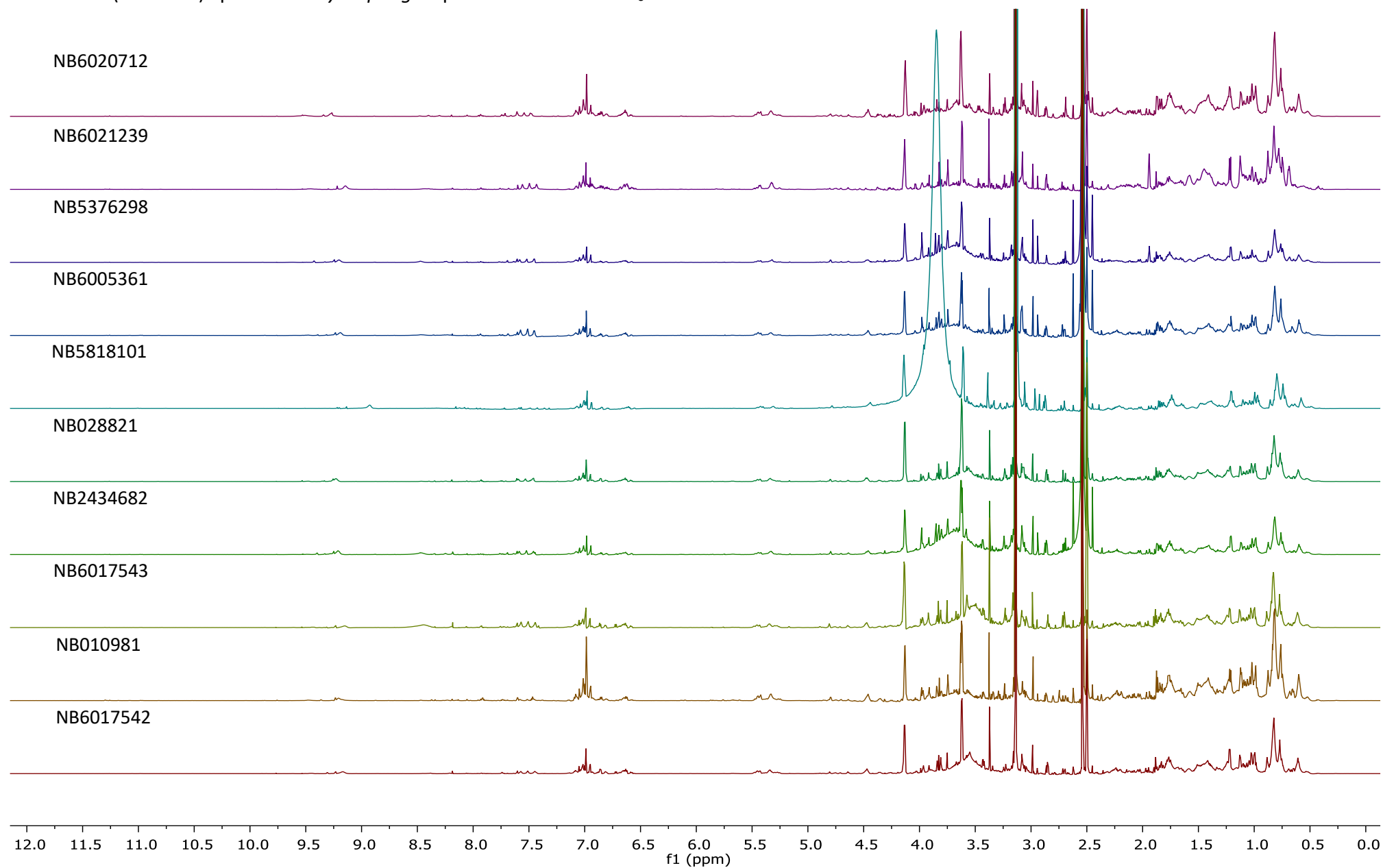


NB6009479



^aSinglet at δ_{H} 2.54 represents DMSO residual peak

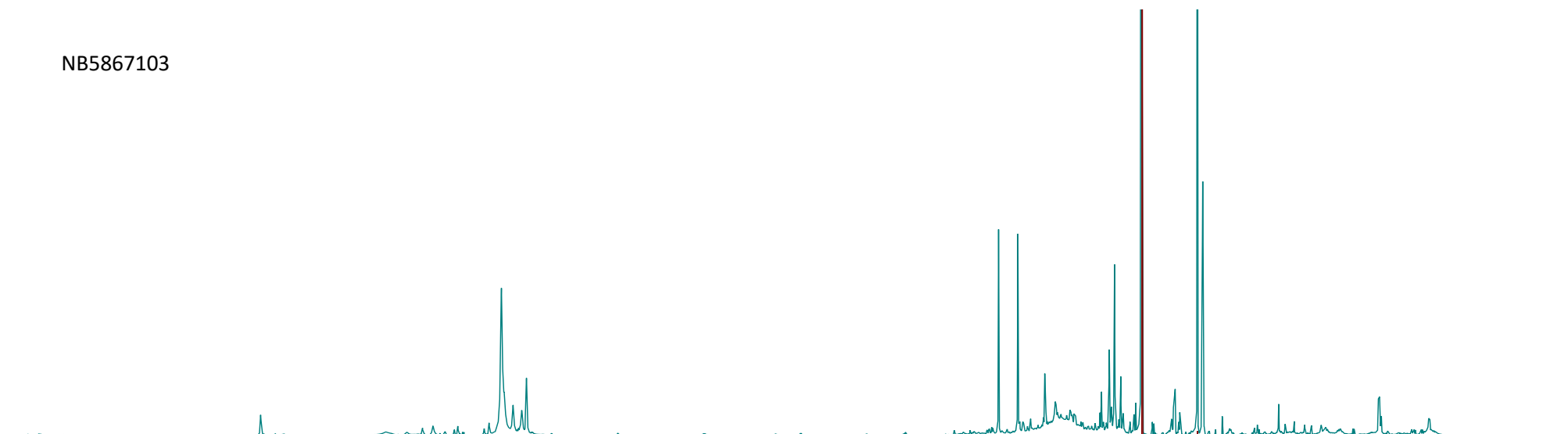
S6 ^1H NMR (800 MHz) Spectra of *Phyllospongia* sp. Extracts in $\text{DMSO}-d_6^a$



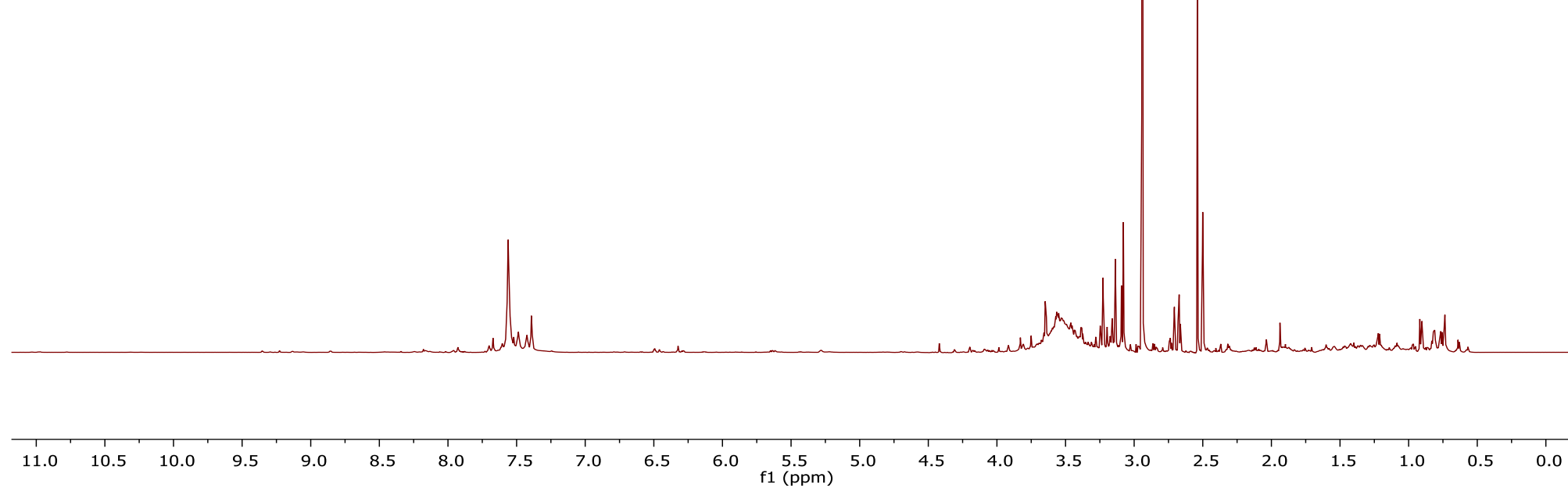
^aSinglet at δ_{H} 2.54 represents DMSO residual peak

S7 ^1H NMR (800 MHz) Spectra of *Psammocinia* sp. Extracts in $\text{DMSO}-d_6^a$

NB5867103

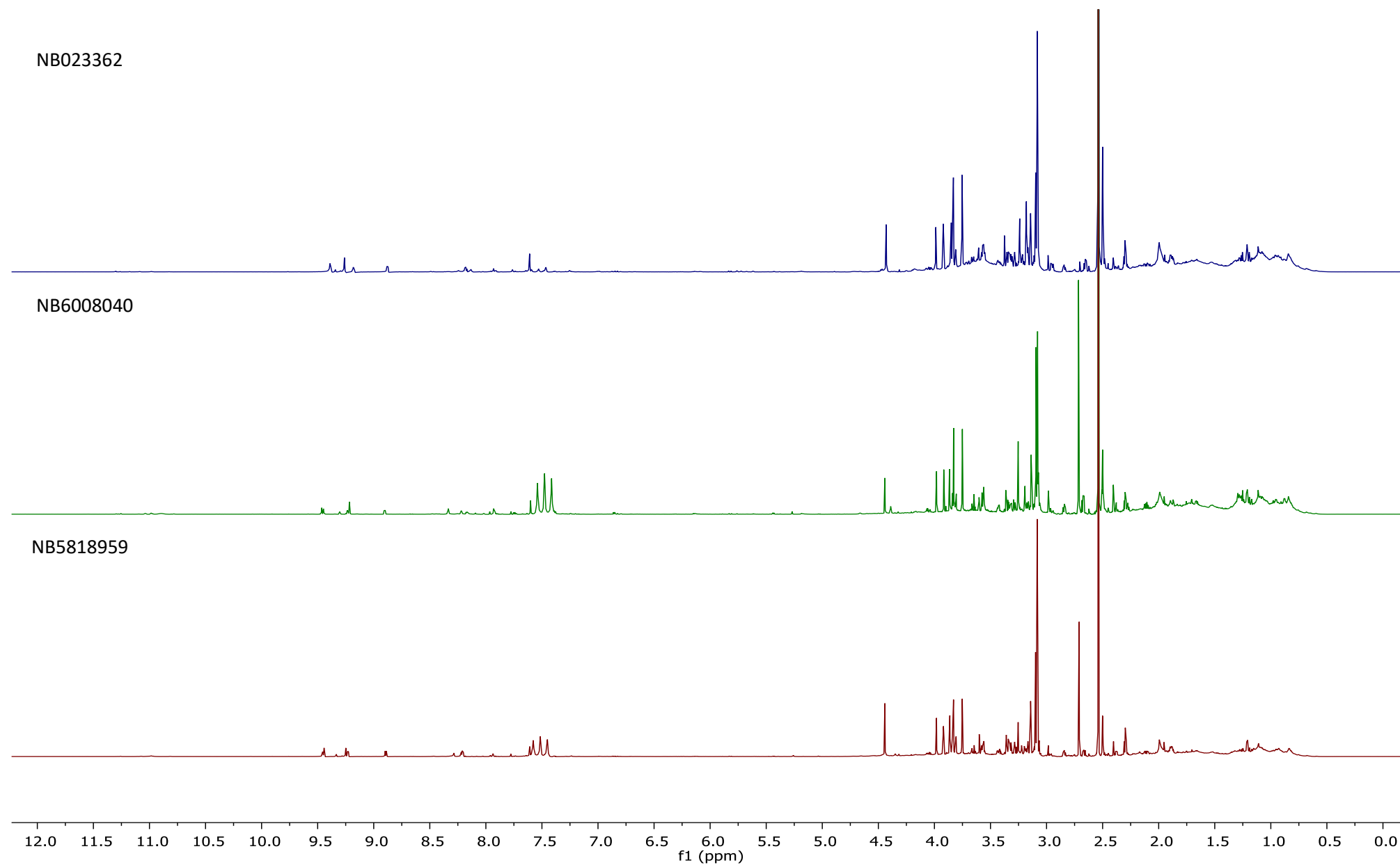


NB6005306



^aSinglet at δ_{H} 2.54 represents DMSO residual peak

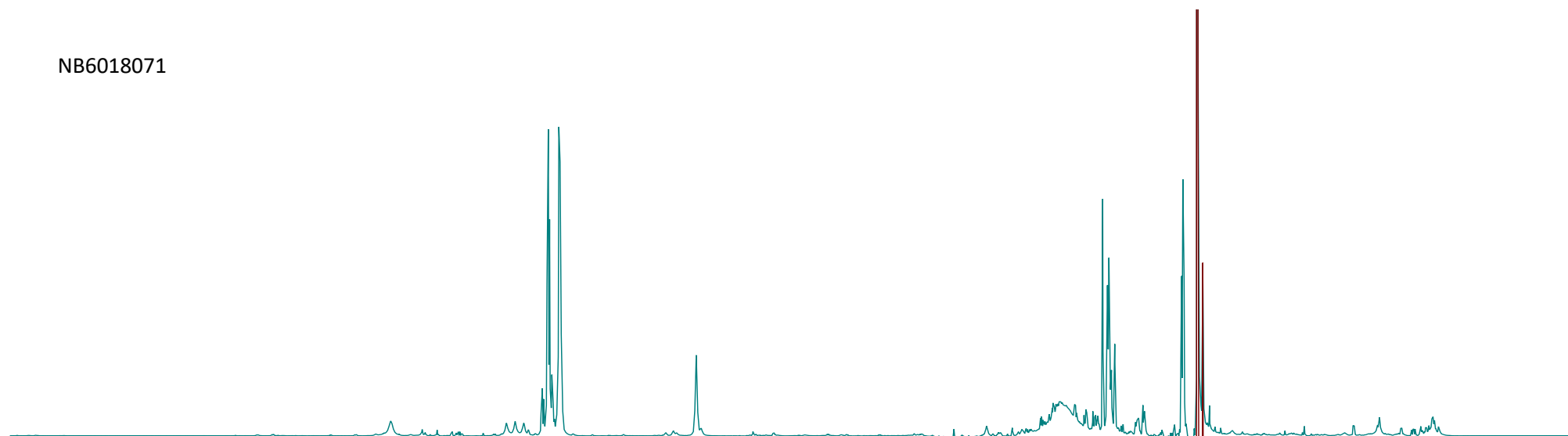
S8 ^1H NMR (800 MHz) Spectra of *Rhabdastrella globostellata* Extracts in $\text{DMSO}-d_6^a$



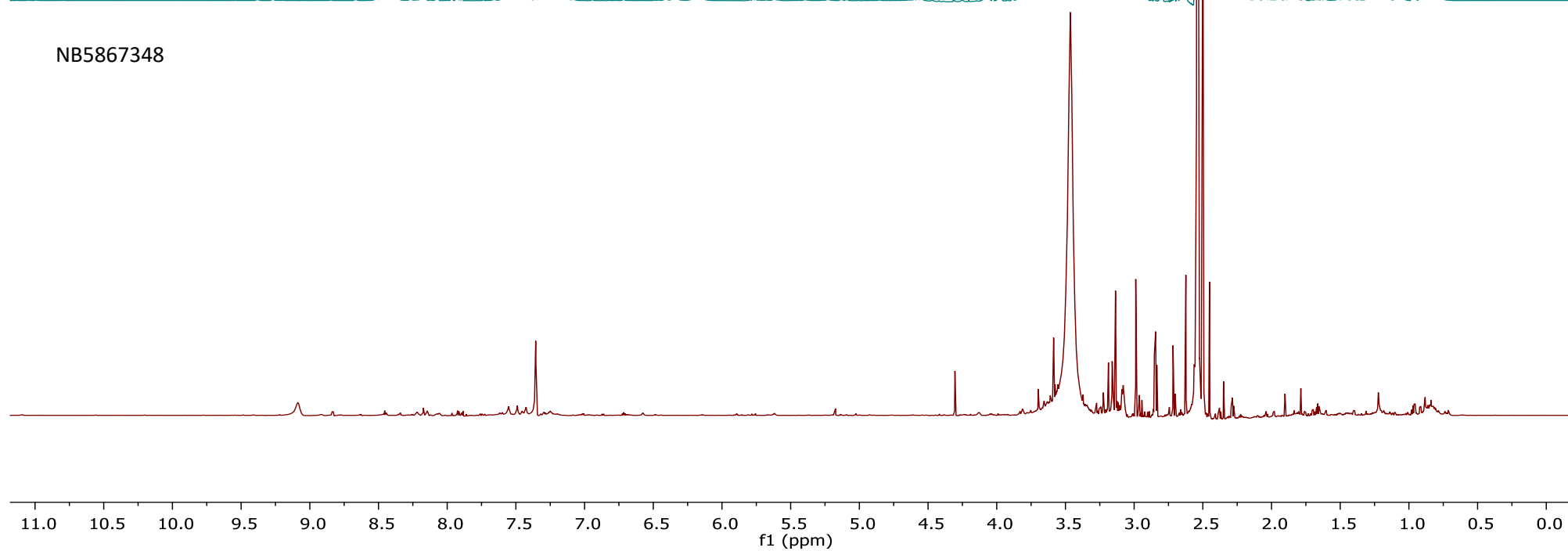
^aSinglet at δ_{H} 2.54 represents DMSO residual peak

S9 ^1H NMR (800 MHz) Spectra of *Didemnum* sp. Extracts in $\text{DMSO}-d_6^a$

NB6018071

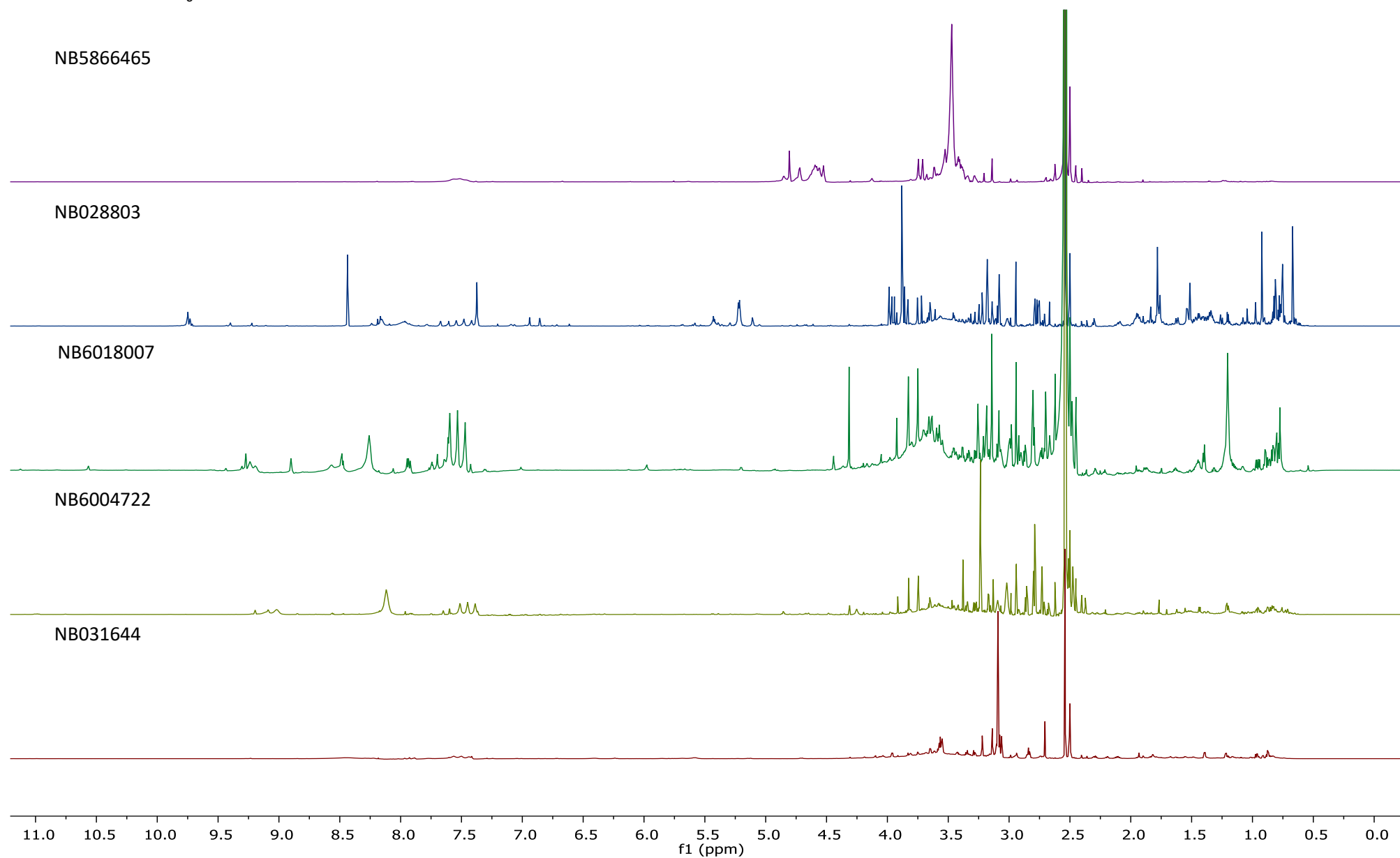


NB5867348



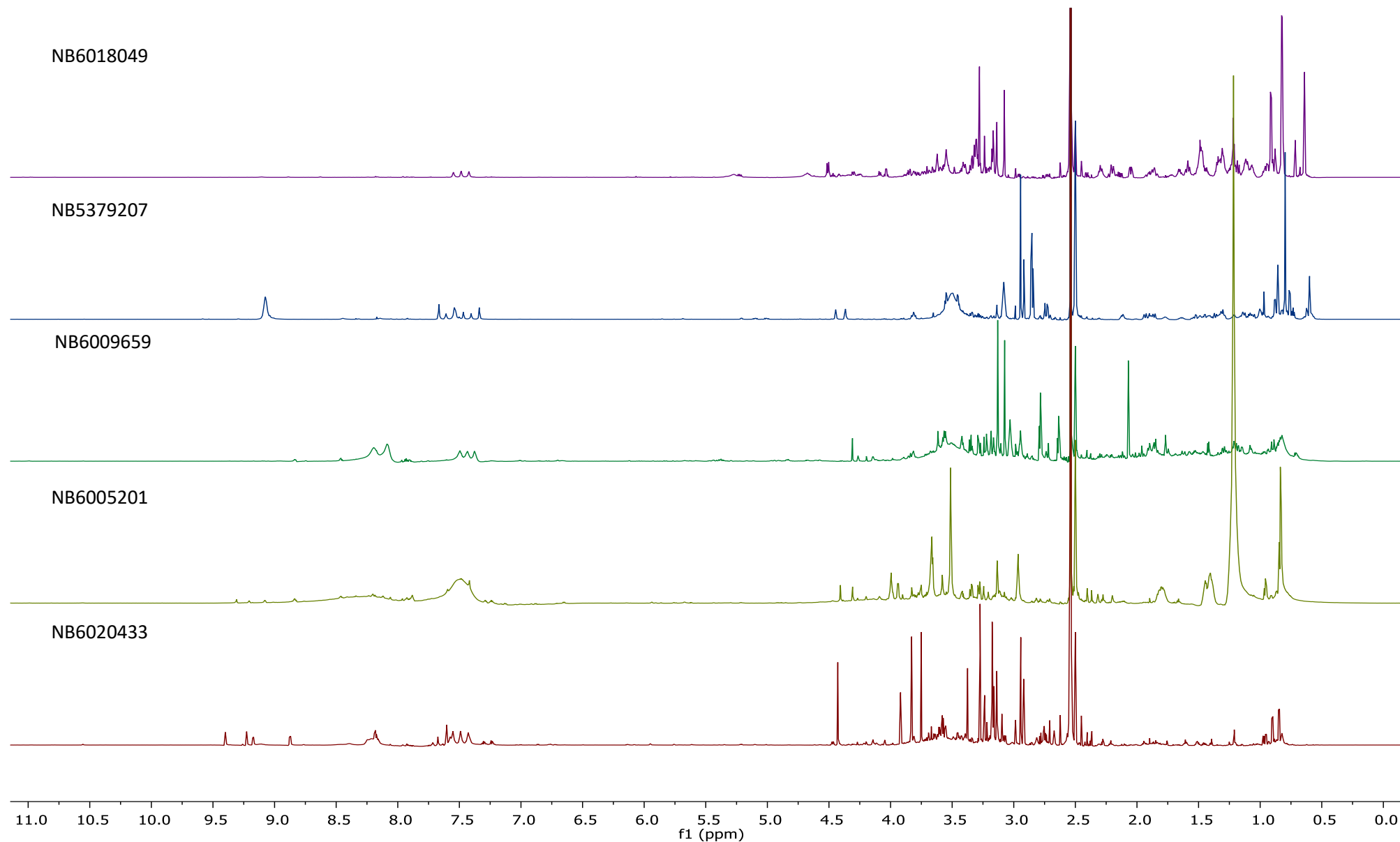
^aSinglet at δ_{H} 2.54 represents DMSO residual peak

S10 ^1H NMR (800 MHz) Spectra of *Acanthophora muscoides*, *Agelas axifera*, *Ceratopsion clavatum*, *Chalinula* sp. and *Cinachyrella (Raphidotethya) enigmatica*
Extracts in $\text{DMSO}-d_6^a$



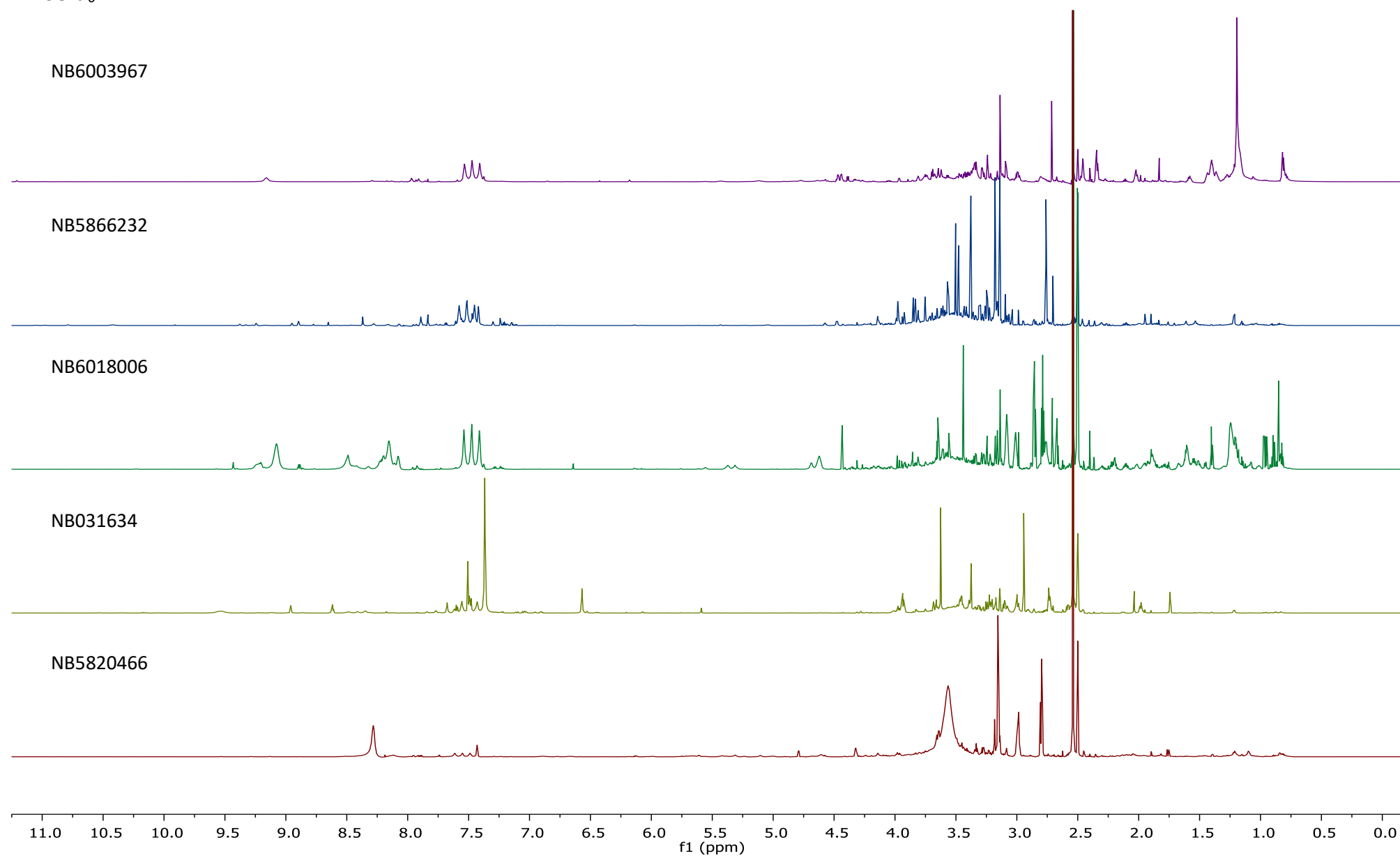
^aSinglet at δ_{H} 2.54 represents DMSO residual peak

S11 ^1H NMR (800 MHz) Spectra of *Citronia* sp., *Cymbastela coralliophila*, *Desmacella* sp., *Echinochalina (Protophlitaspongia)* sp. and *Endectyon* sp. Extracts in $\text{DMSO}-d_6^a$



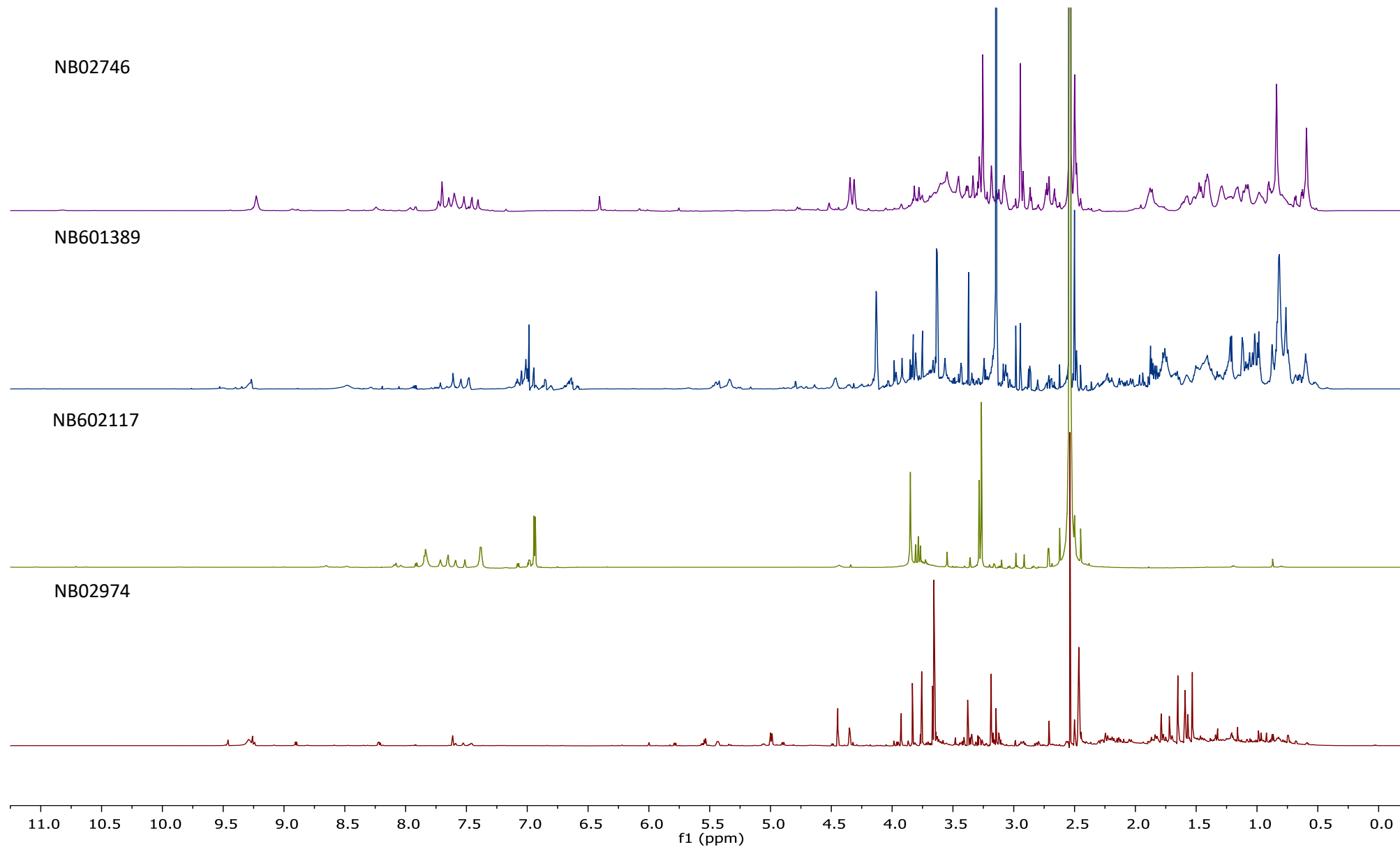
^aSinglet at δ_{H} 2.54 represents DMSO residual peak

S12 ^1H NMR (800 MHz) Spectra of *Erylus amissus*, *Fascaplysinopsis reticulata*, *Gelliodes* sp., *Ianthella flabelliformis* and *Leucetta microraphis* Extracts in $\text{DMSO}-d_6^a$



^aSinglet at δ_{H} 2.54 represents DMSO residual peak

S13 ^1H NMR (800 MHz) Spectra of *Petromica (Chaladesma) pacifica*, *Polyfibrospongia flabellifera*, *Polycarpa aurata* and *Sarcophyton cherbonnieri* Extracts in $\text{DMSO}-d_6^a$



^aSinglet at δ_{H} 2.54 represents DMSO residual peak

